

TOWN OF SHELDON
 COUNTY OF FRANKLIN
VERMONT ROUTE 78
 SWANTON-SHELDON ROAD

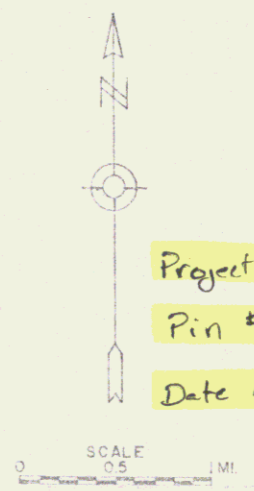
BEGINNING AT THE HIGHGATE-SHELDON TOWN LINE AND
 EXTENDING SOUTHEASTELY TO VERMONT ROUTE 105
 A DISTANCE OF 1.8381 MILES

LENGTH OF VERMONT ROUTE 78 IN SHELDON IS
 9,705.2 FEET = 1.8381 MILES



MP 0.00 - 1.54
 RIGHT-OF-WAY DIVISION
 TOWN FILE
 PERPETUAL
 Town of VT 78
 (To Be Returned To R.O.W. Division)

Project MM 0.00
 Pin # 00R443
 Date 10/1/1965



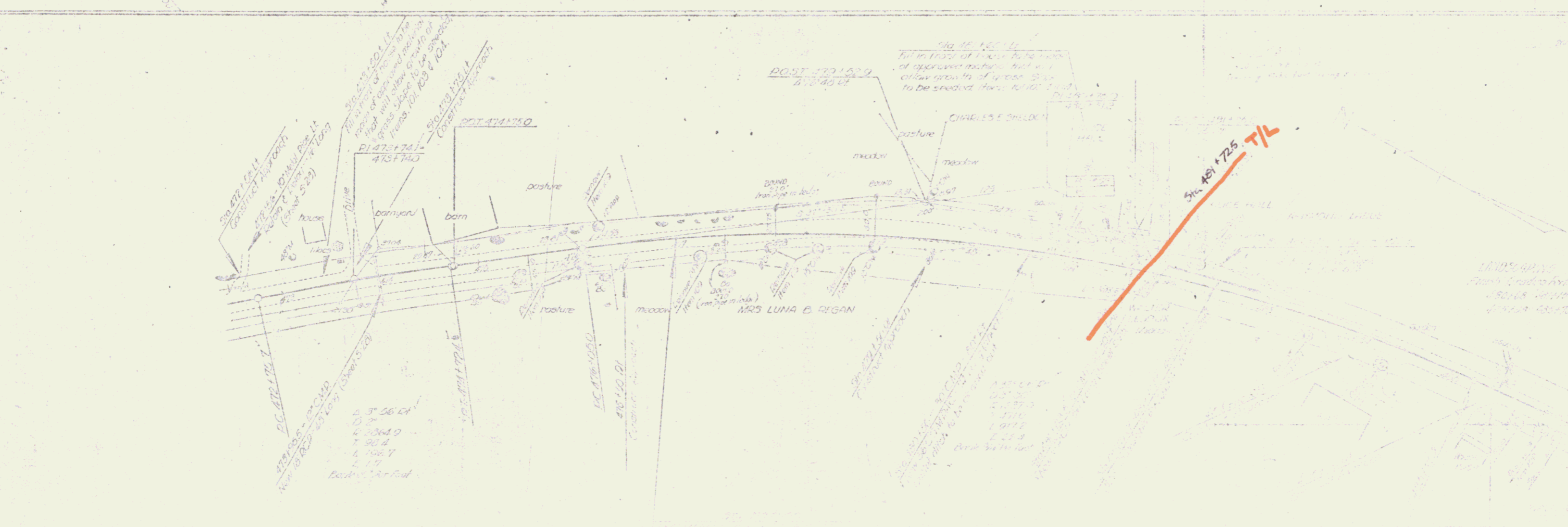
PROJECT 291-F (1) 1942 PROJECT 50231(10) 56

SURVEYED BY	DATE
DRAWN BY W. SMITH	OCT '65
TRACED BY	DATE
VERMONT ROUTE 78	
FROM	NO
SHEET 1	OF 6

PLAN	DATE	BY	CHECKED



PLAN	DATE	BY	CHECKED



PLAN
 DATE
 DRAWN BY
 CHECKED BY
 SCALE
 SHEET NO.

LAN
 DATE
 DRAWN BY
 CHECKED BY
 SCALE
 SHEET NO.

