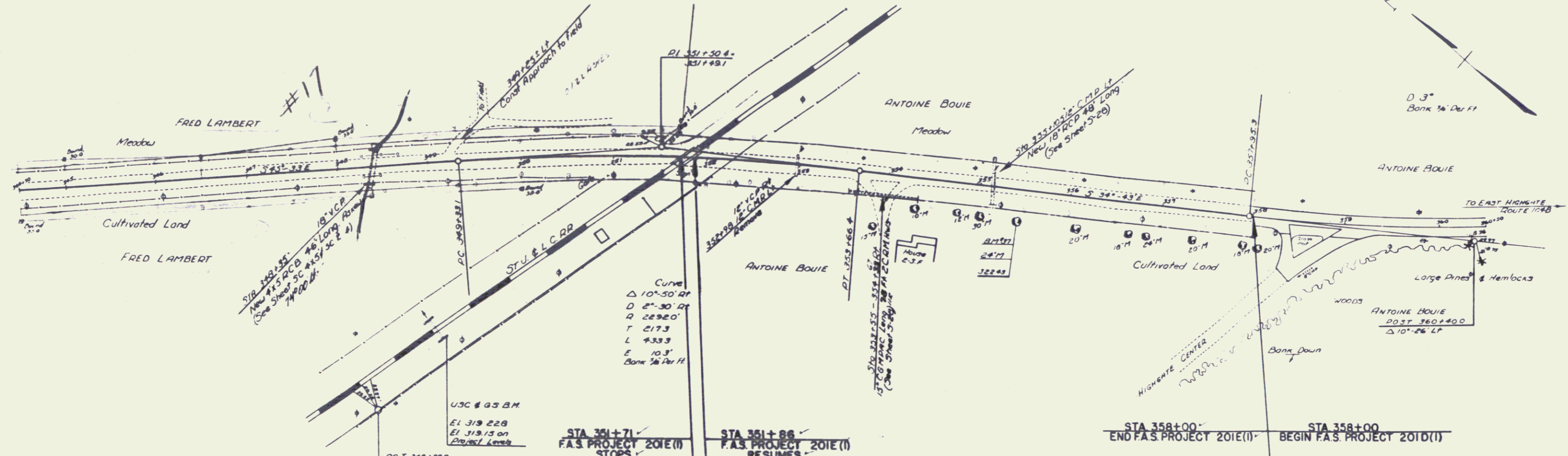


M.P. 5.21
351+70



Curve
 Δ 10°-50' RT
 D 2°-30' RT
 R 2292.0'
 T 217.3'
 L 433.3'
 E 10.3'
 Bank 1/2' Per Ft.

U.S.C. & G.S. B.M.
 El. 319.228
 El. 319.15 on
 Project Level

STA 351+71
 F.A.S. PROJECT 201E(1)
 STOPS

STA 351+86
 F.A.S. PROJECT 201E(1)
 RESUMES

STA 358+00
 END F.A.S. PROJECT 201E(1)

STA 358+00
 BEGIN F.A.S. PROJECT 201D(1)

The grade at the end of F.A.S. Project 201E(1) is figured for double rock coat of refined for. The grade at the beginning of F.A.S. Project 201D(1) is figured for future surface. In staking out F.A.S. Project 201E(1), it will be necessary for the Engineer to allow a transition in grade to the existing ground.

