

INDEX OF SHEETS

| | |
|-------------|---|
| SHEET NO. 1 | TITLE PAGE |
| " 2 | 28-2A TYPICAL CROSS-SECTION OF IMPROVEMENT (GRADING, BASE, DRAINAGE, & GUARD RAIL WITH BANKING AND WIDENING TABLES) |
| " 3 | BANKING AND WIDENING TABLES (DOUBLE TRACK COAT OF REFINED TAR (ITEM 29)) |
| " 4-13 | PLAN AND PROFILE STA. |
| " 14 | STD. STRUCT. SHEET S-28 PIPE CULVERTS |
| " 15 | " " S-30 GUARD RAIL |
| " 16 | " " S-30A STANDARD UNDERDRAIN |
| " 17 | " " S-31 BOUNDARY MARKERS |
| " 18 | " " S-31 BOUNDARY MARKERS |
| " 19 | " " SCW-4 4' x 4' R.C. BOX |
| " 20 | " " S-40 BARRICADES SIGNS & LIGHTS |
| " 21 | " " S-41 ROUNDING OF CUT SLOPES |
| " 22-60 | CROSS-SECTIONS |

Standard Structure Sheets
 Approved by the Chief Engineer
 528 July 11, 1933
 530 Aug. 13, 1934
 531 July 25, 1934

STATE OF VERMONT
 STATE HIGHWAY DEPARTMENT

PLAN AND PROFILE OF PROPOSED
 STATE HIGHWAY
 FEDERAL AID PROJECT

TOWN OF HIGHGATE

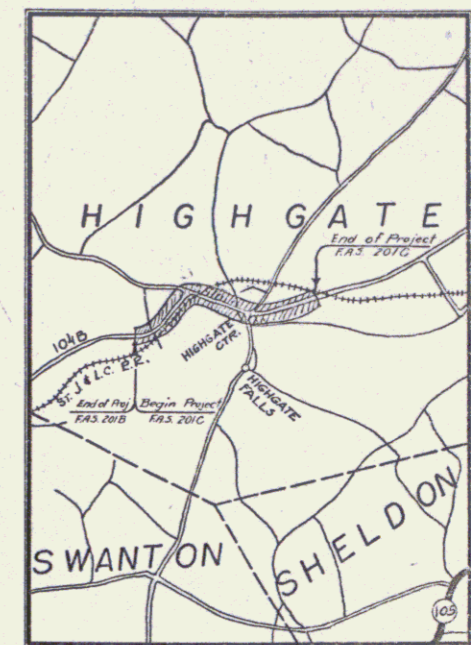
SWANTON - HIGHGATE ROAD

BEGINNING AT A POINT 1.339 MILES NORTHEAST OF THE SWANTON-HIGHGATE TOWN LINE, ON ROUTE 104B, & EXTENDING 2.214 MILES NORTHEASTERLY TO A POINT 0.451 MILES NORTHEAST OF THE INTERSECTION WITH THE HIGHGATE FALLS ROAD.

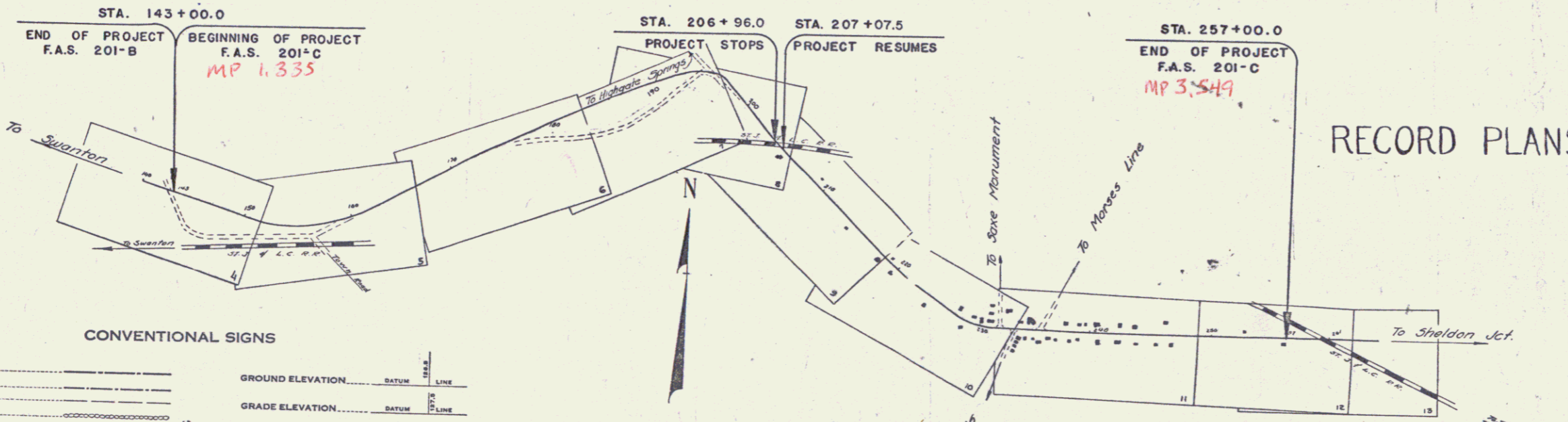
LENGTH OF PROJECT 11694.7 FT. = 2.214 MI.

Route: VT-78
 Project: FAS 201C
 PIN: OOR436
 Date: 06/13/1938

| FED. ROAD DIST. NO. | STATE | F.A.S. NO. | FISCAL YEAR | NO. | TOTAL SHEETS |
|---------------------|-------|------------|-------------|-----|--------------|
| 9 | Vt. | 201-C | 1938 | 1 | 60 |



SCALE 1" = 1 MILE
 RIGHT-OF-WAY DIVISION
 TOWN FILE
 PERPETUAL
 Plans of VT-78
 (To Be Returned To R.O.W. Division)



RECORD PLANS

CONVENTIONAL SIGNS

| | |
|----------------|-------------------|
| COUNTY LINE | GROUND ELEVATION |
| TOWN LINE | FENCE LINE |
| STONE WALL | UNFENCED PROPERTY |
| GUARD RAIL | RAILROAD |
| TRAVELED WAY | RETAINING WALL |
| CENTER LINE | SURVEY LINE |
| CULVERT | DROP INLET |
| TROLLEY POLE | POWER POLE |
| TELEPHONE POLE | TREES |
| HEDGE | |

SCALES

| | |
|----------------|---------------|
| TITLE | 1" = 600' |
| TYPICAL | 1" = 2' |
| PLAN | 1" = 50' |
| PROFILE | HOR. 1" = 50' |
| | VER. 1" = 10' |
| CROSS SECTIONS | 1" = 5' |

These plans are subject to such revisions as may be required by the Bureau of Public Roads or the Commissioner of Highways. Construction is to be carried on in accordance with the plans and the Standard Road & Bridge Specifications of 1936 as approved Dec. 23, 1936 by the Bureau of Public Roads, including all subsequent approved revisions and such revised Specifications and Special Provisions as are submitted with the plans.

APPROVED: July 12, 1938
 J. E. Sargent
 COMMISSIONER OF HIGHWAYS

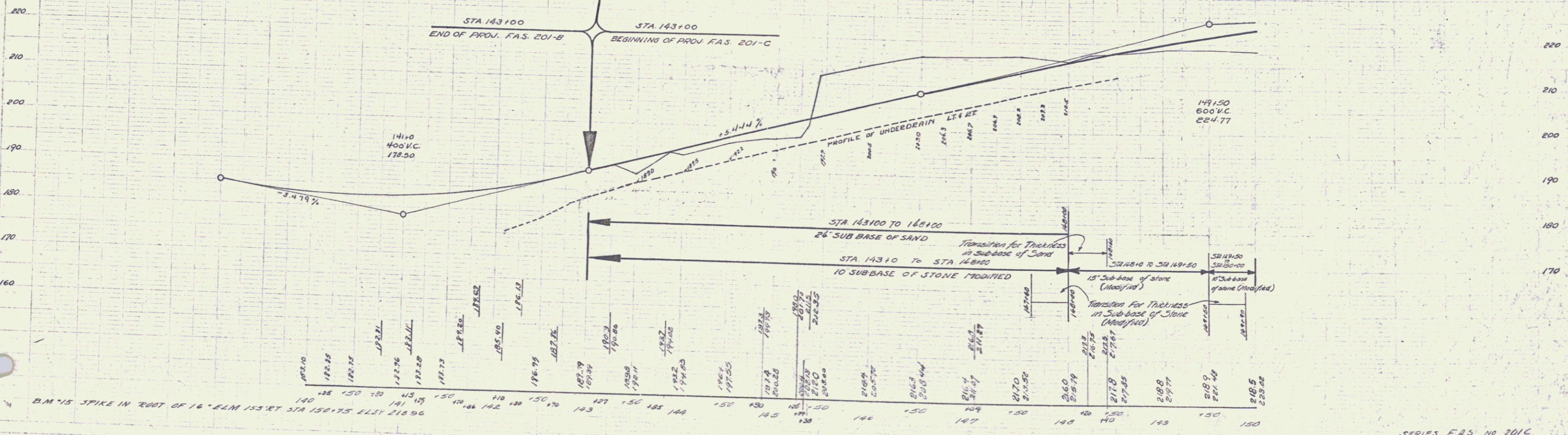
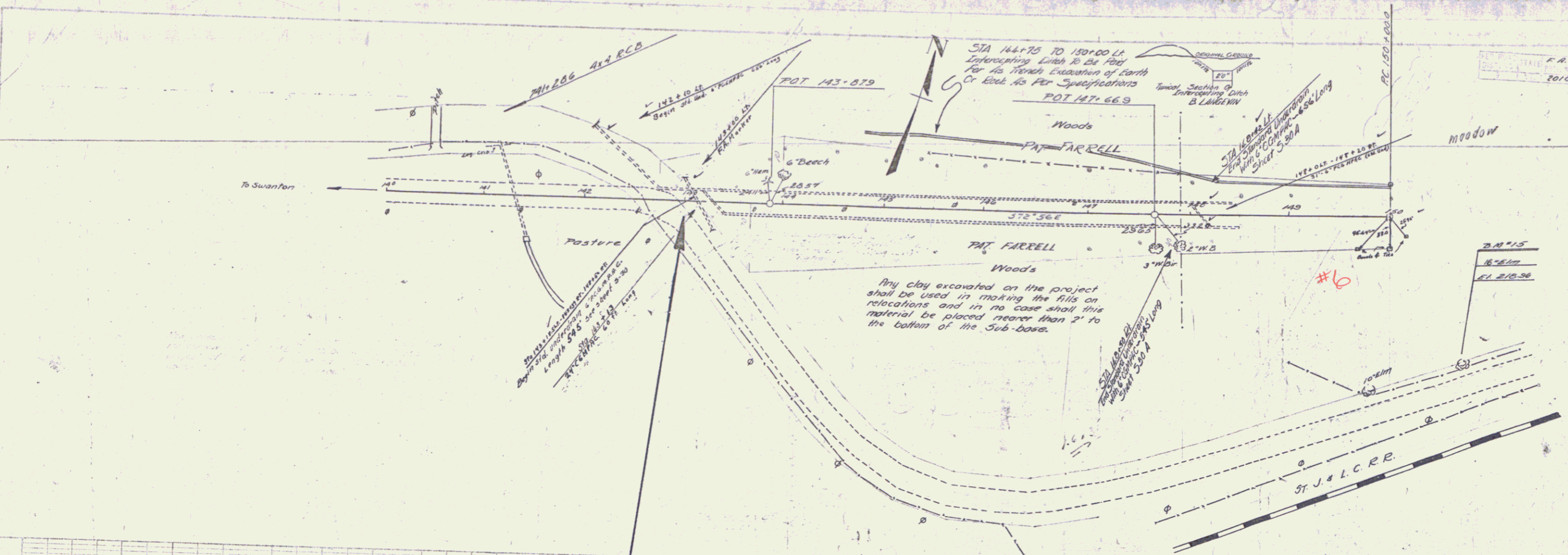
NOTE: ANY FURTHER INFORMATION CONCERNING FINAL QUANTITIES, WEIGHTS OR OTHER DETAILS RELATIVE TO THIS PROJECT MAY BE FOUND IN EITHER THE FIELD BOOKS OR THE ESTIMATE FILE.

RECOMMENDED [Signature]
 DISTRICT ENGINEER BUREAU OF PUBLIC ROADS
 RECOMMENDED FOR APPROVAL [Signature]
 CHIEF ENGINEER BUREAU OF PUBLIC ROADS
 APPROVED [Signature]
 DIRECTOR - BUREAU OF PUBLIC ROADS

Approved: James G. Hill, District Highway Commissioner
 Correct: July 19, 1938, Road Engineer
 SERIES FAS NO. 201C FILED SHEET (1) OF 60

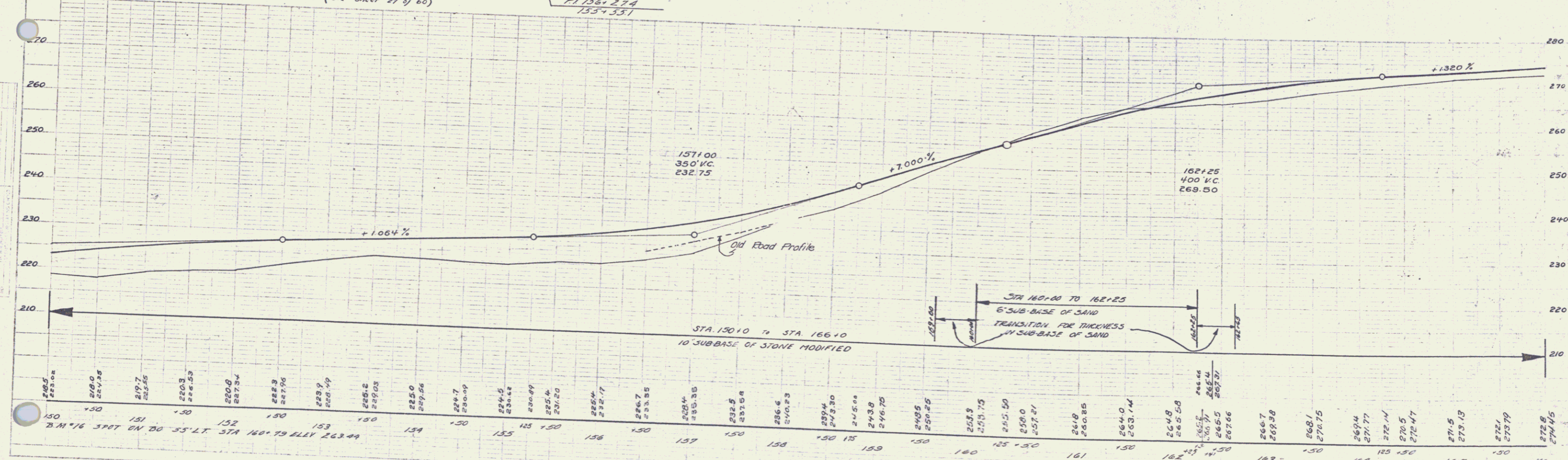
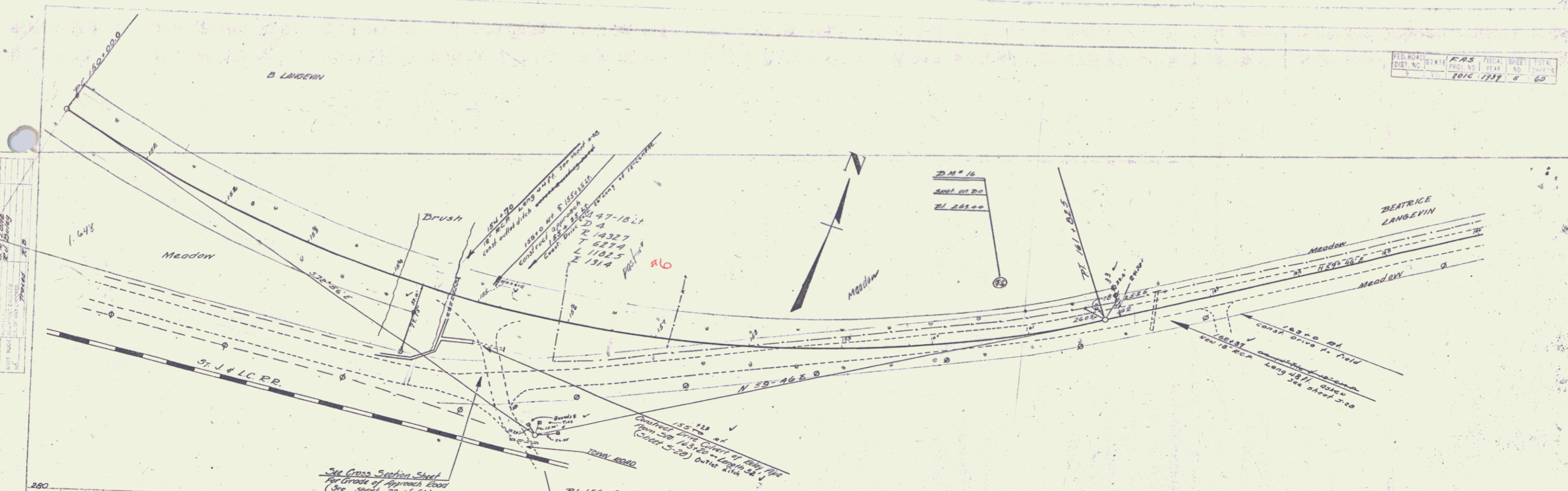
DIST. #8 PLANS

1. Name of Engineer
 2. Name of Client
 3. Name of Project
 4. Name of Road
 5. Name of Section
 6. Name of Sheet
 7. Name of Date
 8. Name of Scale
 9. Name of Drawing
 10. Name of Title

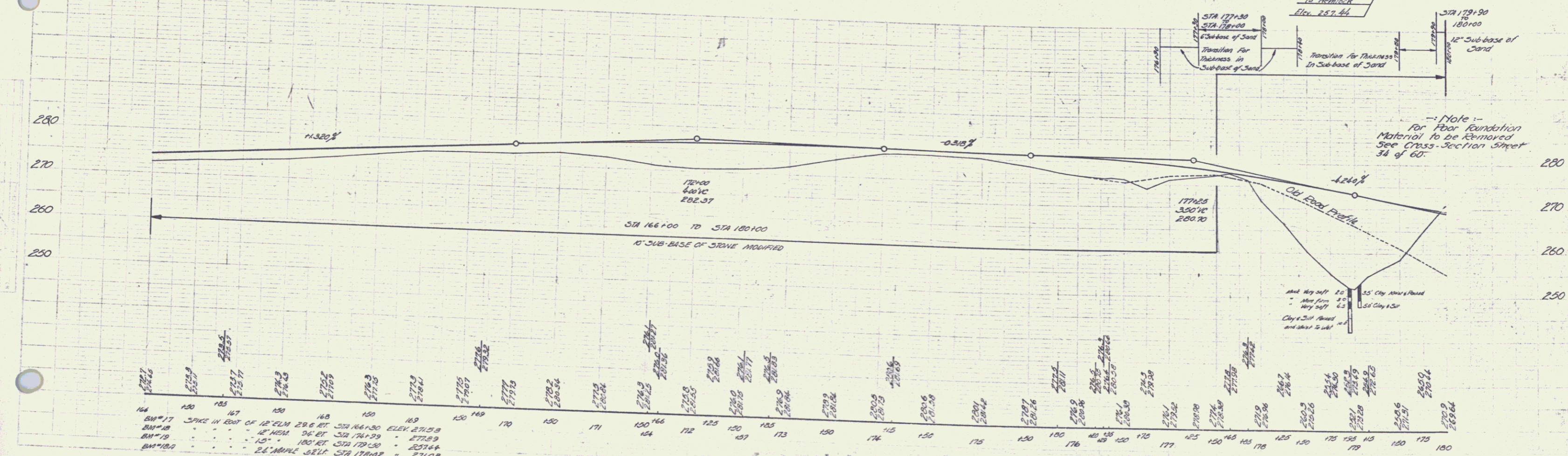
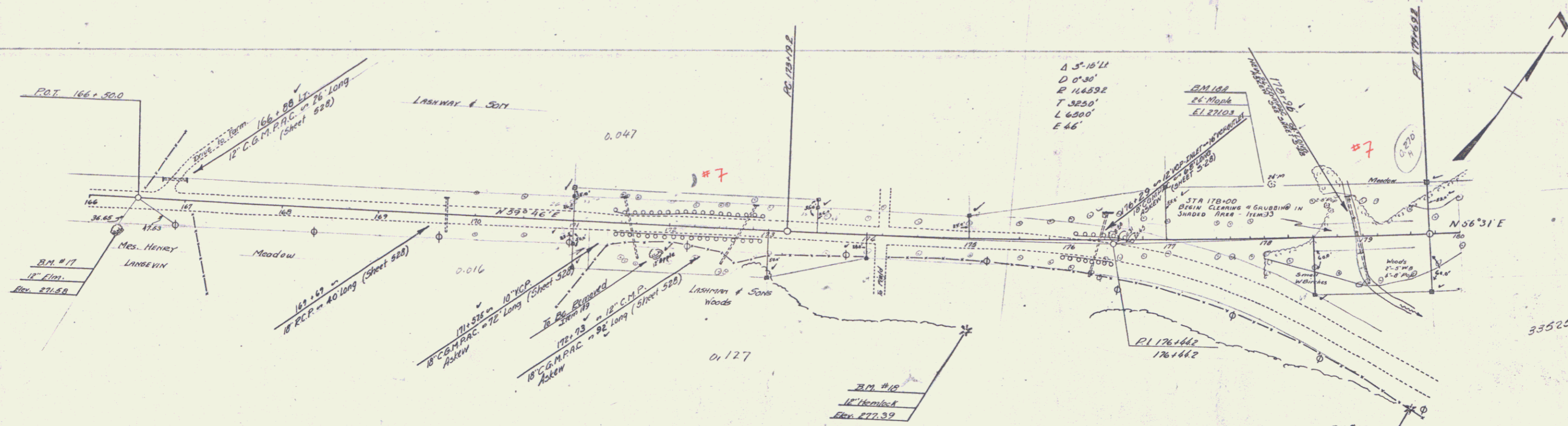


B.M. #15 SPIKE IN ROOT OF 16" LIM 155 RT STA 150+75 ELEV 218.96

PLAN
 1" = 40'
 1" = 100'

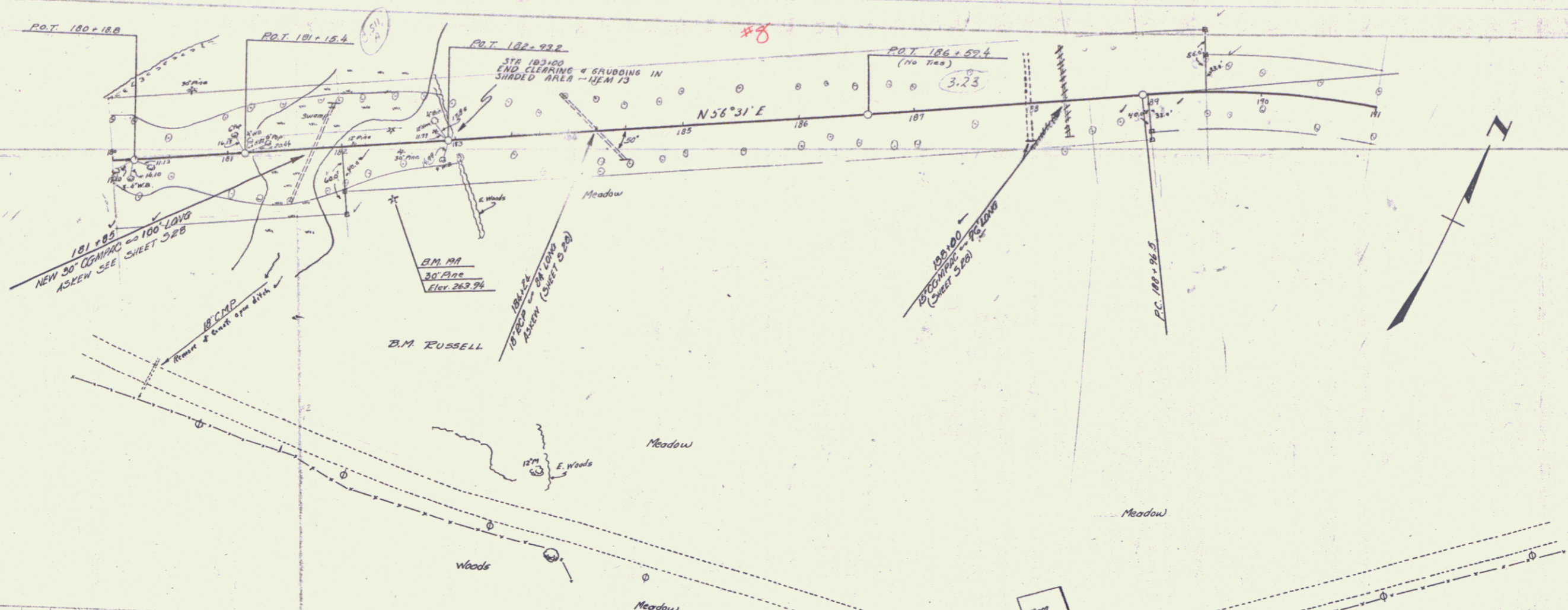


| | | | | | | | | | | | | | | | | | | | | | | | | | | | | | | | | | | | | | | | | | | | | | | | | | | |
|-----|-------|-------|-----|-------|-------|-----|-------|-------|-----|-------|-------|-----|-------|-------|-----|-------|-------|-----|-------|-------|-----|-------|-------|-----|-------|-------|-----|-------|-------|-----|-------|-------|-----|-------|-------|-----|-------|-------|-----|-------|-------|-----|-------|-------|-----|-------|-------|-----|-------|-------|
| 150 | 269.5 | 269.8 | 151 | 269.0 | 269.5 | 152 | 268.5 | 269.0 | 153 | 268.0 | 268.5 | 154 | 267.5 | 268.0 | 155 | 267.0 | 267.5 | 156 | 266.5 | 267.0 | 157 | 266.0 | 266.5 | 158 | 265.5 | 266.0 | 159 | 265.0 | 265.5 | 160 | 264.5 | 265.0 | 161 | 264.0 | 264.5 | 162 | 263.5 | 264.0 | 163 | 263.0 | 263.5 | 164 | 262.5 | 263.0 | 165 | 262.0 | 262.5 | 166 | 261.5 | 262.0 |
|-----|-------|-------|-----|-------|-------|-----|-------|-------|-----|-------|-------|-----|-------|-------|-----|-------|-------|-----|-------|-------|-----|-------|-------|-----|-------|-------|-----|-------|-------|-----|-------|-------|-----|-------|-------|-----|-------|-------|-----|-------|-------|-----|-------|-------|-----|-------|-------|-----|-------|-------|

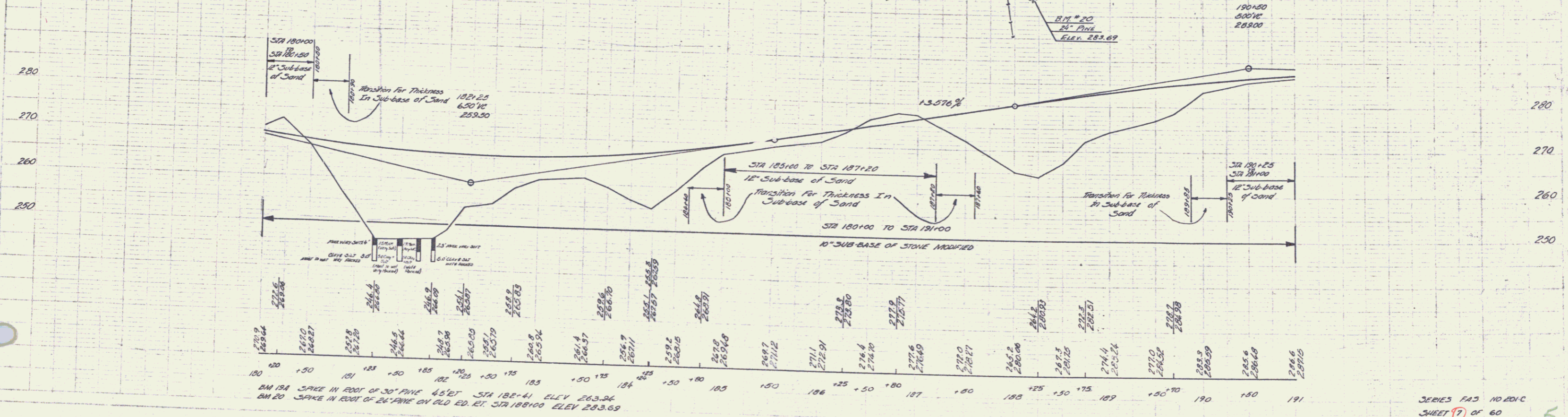


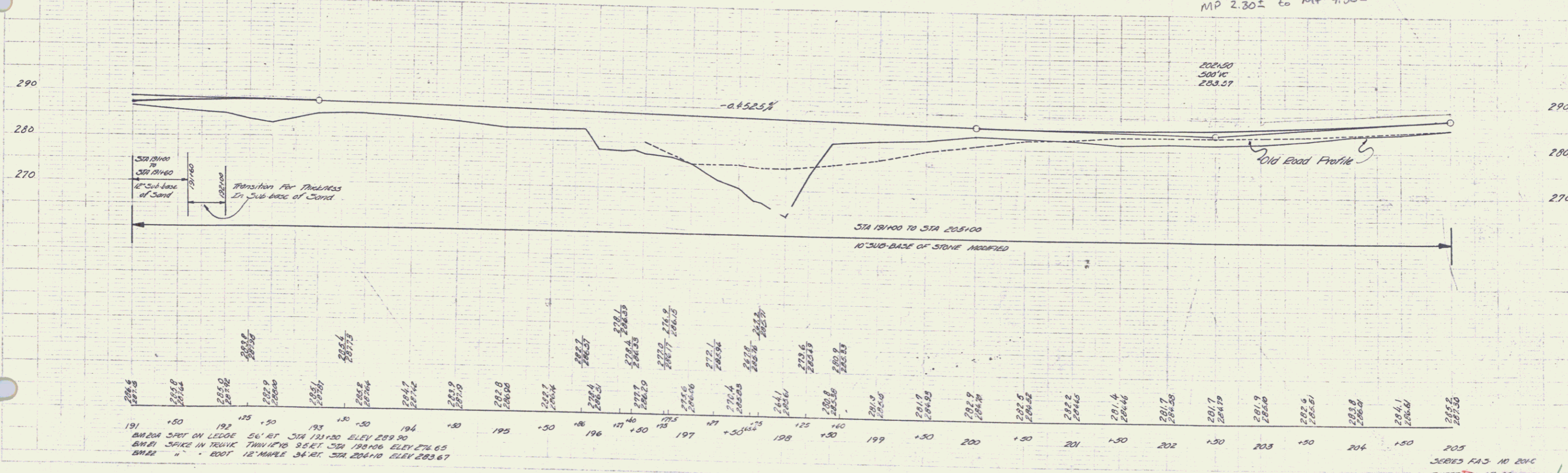
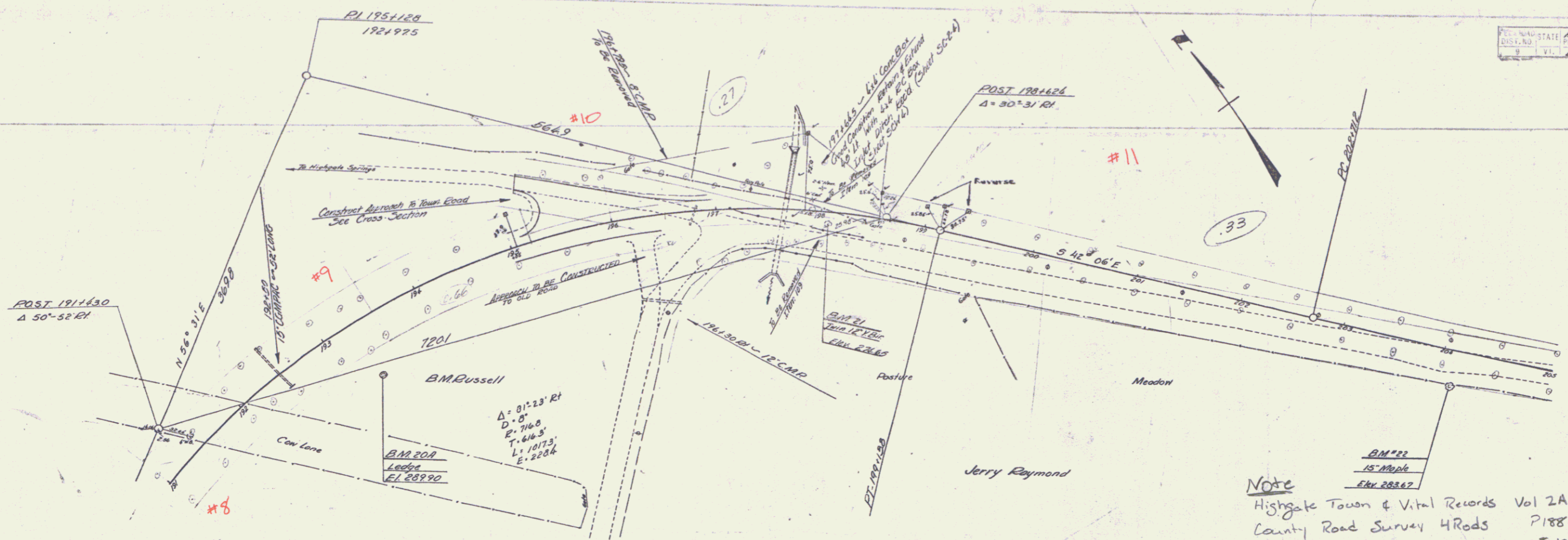
| | | | | | | | | | | | | | | | | |
|----------|---|-------|-------|-------|-------|-------|-------|-------|-------|-------|-------|-------|-------|-------|-------|-------|
| 164 | 165 | 166 | 167 | 168 | 169 | 170 | 171 | 172 | 173 | 174 | 175 | 176 | 177 | 178 | 179 | 180 |
| 271.6 | 271.9 | 272.2 | 272.5 | 272.8 | 273.1 | 273.4 | 273.7 | 274.0 | 274.3 | 274.6 | 274.9 | 275.2 | 275.5 | 275.8 | 276.1 | 276.4 |
| B.M. #17 | SPIKE IN FOOT OF 12" ELM 28' SET 53' N66°30' ELEV. 271.58 | | | | | | | | | | | | | | | |
| B.M. #18 | 12" HORIZ. 30' BY 30' 24' 79" - 277.89 | | | | | | | | | | | | | | | |
| B.M. #19 | 10" 180' ELEV. STA 179+00 - 257.44 | | | | | | | | | | | | | | | |
| B.M. #20 | 24" MANHOLE 52' STA 178+02 - 271.09 | | | | | | | | | | | | | | | |

| | | | | |
|-----------|-------|-------------|-----------|--------------|
| REG. NO. | STATE | FISCAL YEAR | SHEET NO. | TOTAL SHEETS |
| 107355.70 | PA | 1957 | 7 | 20 |



Note:
 For Floor Foundation Material
 to be Removed See Cross Section
 Sheets 35 of 60, 36 of 60 & STA 60.



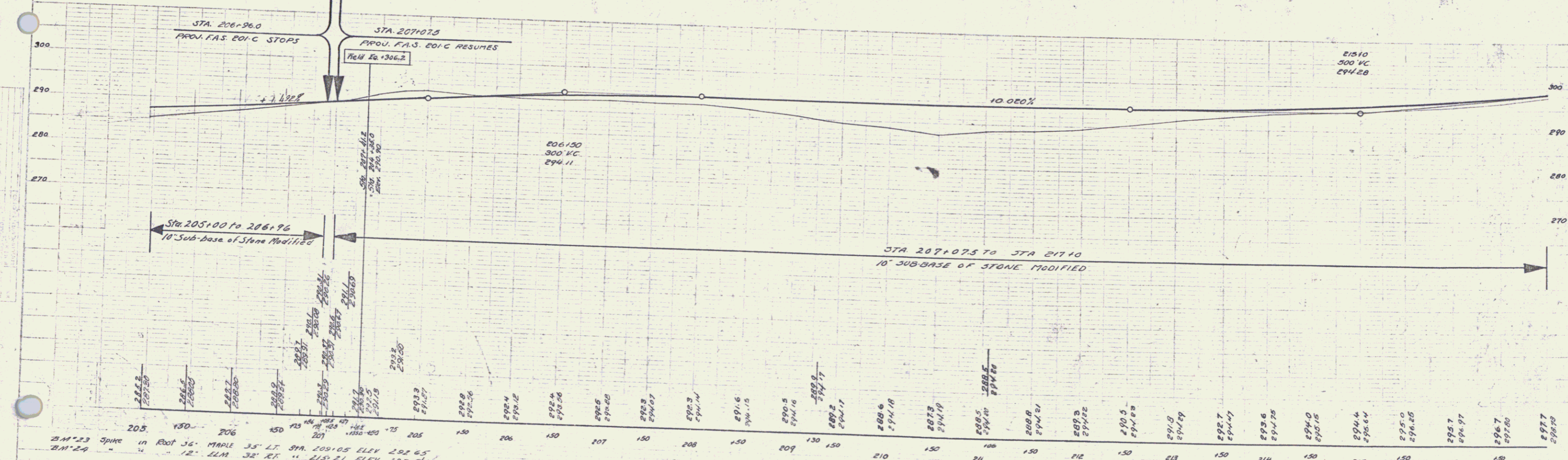
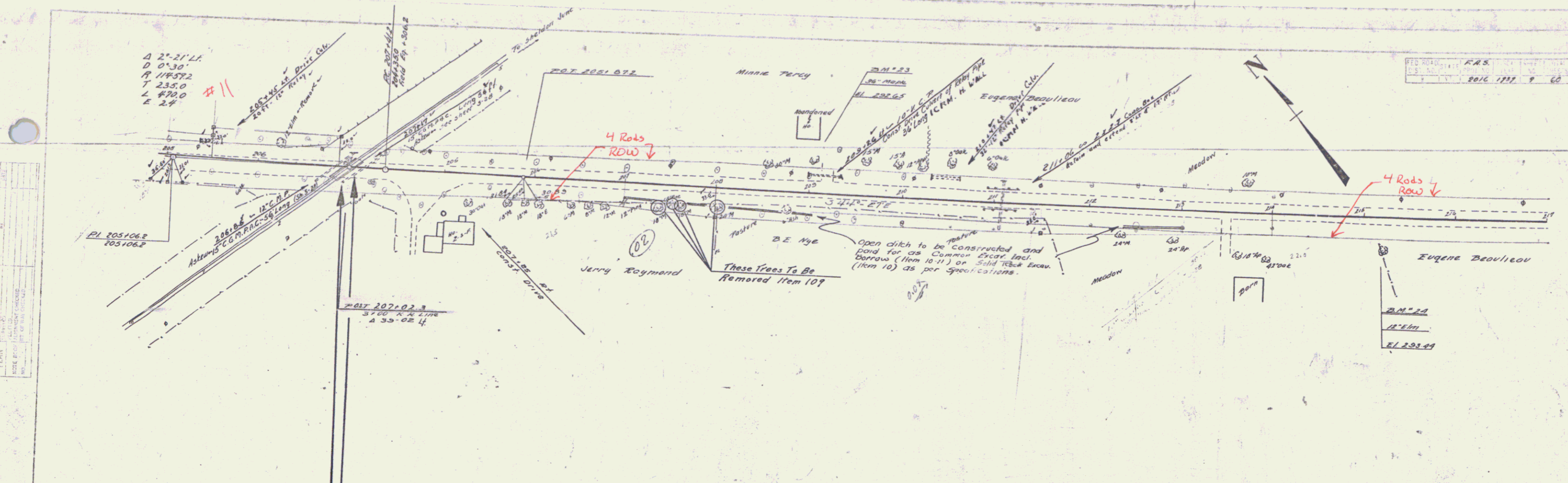


NOTE
 Highgate Town & Vital Records Vol 2A
 County Road Survey 4 Rods P188-185
 MP 2.30± to MP 4.50± 8-10-1831

B.M. 201 ON LEDGE 56' RT STA 191+20 ELEV 289.90
 B.M. 202 SPIKE IN RESIDUE TRAIL 17' RT STA 190+00 ELEV 276.65
 B.M. 203 " " 12' W/RT STA 204+10 ELEV 283.67

Δ 2'-21" LT.
 D 0'-30"
 T 144572
 L 235.0
 E 2.4

SERIES F.A.S. NO. 201C
 SHEET 9 OF 60

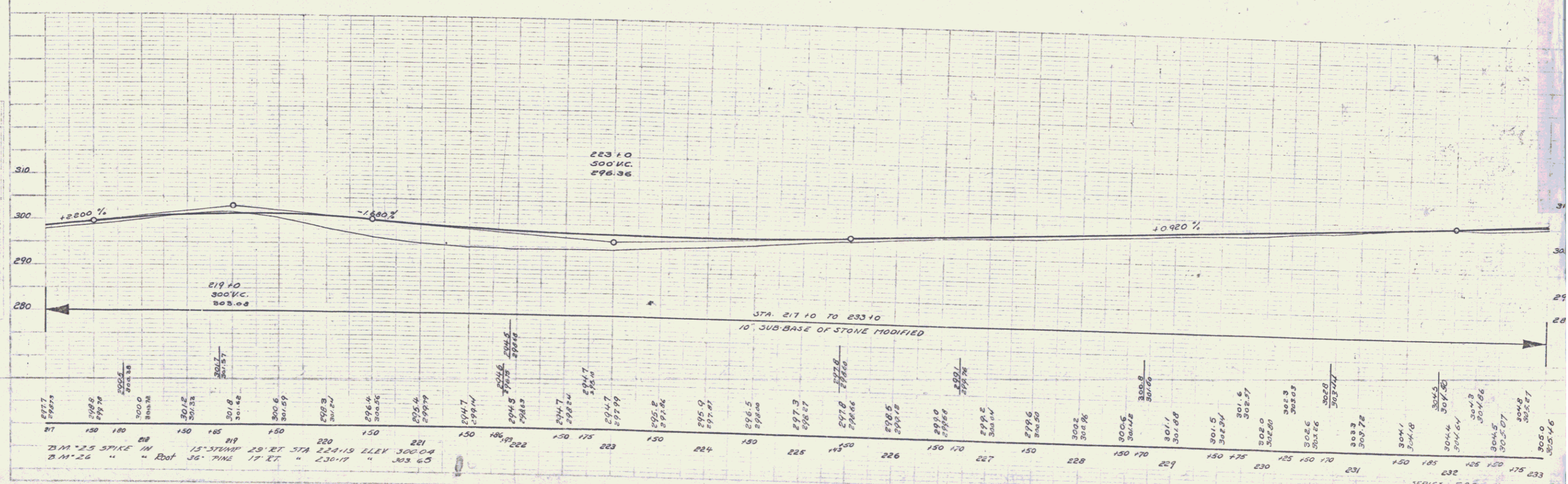
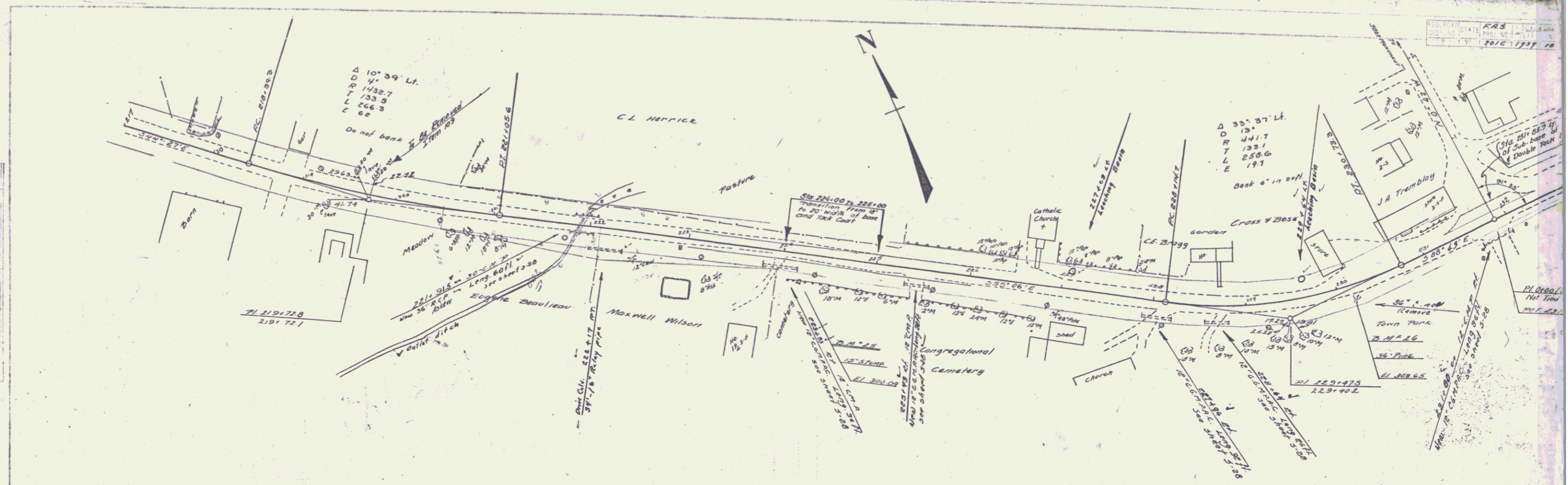


STA 205+00 to 206+96
 10" Sub-base of Stone Modified

STA 207+07.5 to STA 211+0
 10" SUB-BASE OF STONE MODIFIED

B.M. 23 Spike in Root 36' MAPLE 35' LT. STA. 209+05 ELEV. 292.65
 B.M. 24 " " 12' ELM 32' RT. " 215+21 ELEV. 293.94

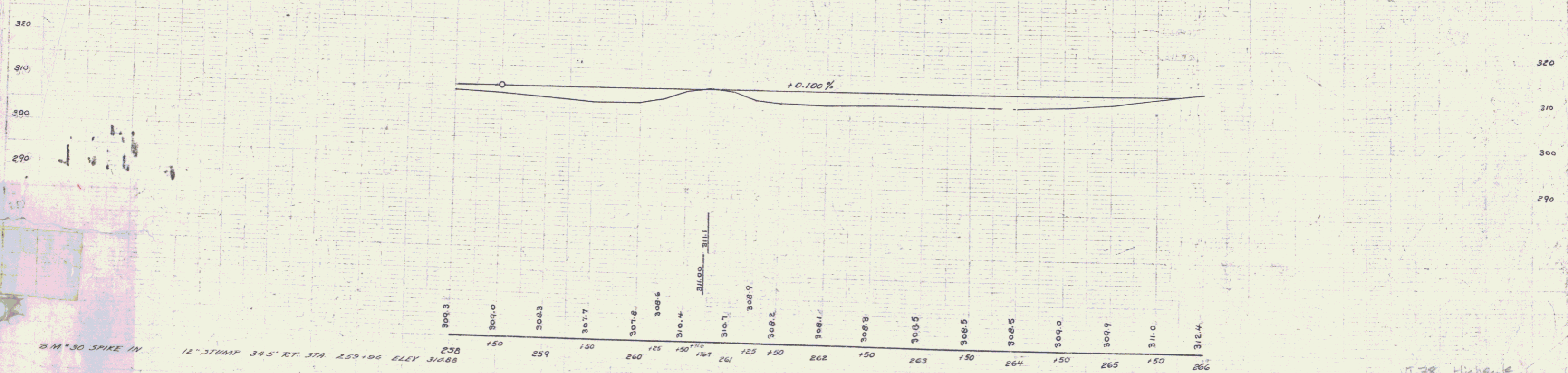
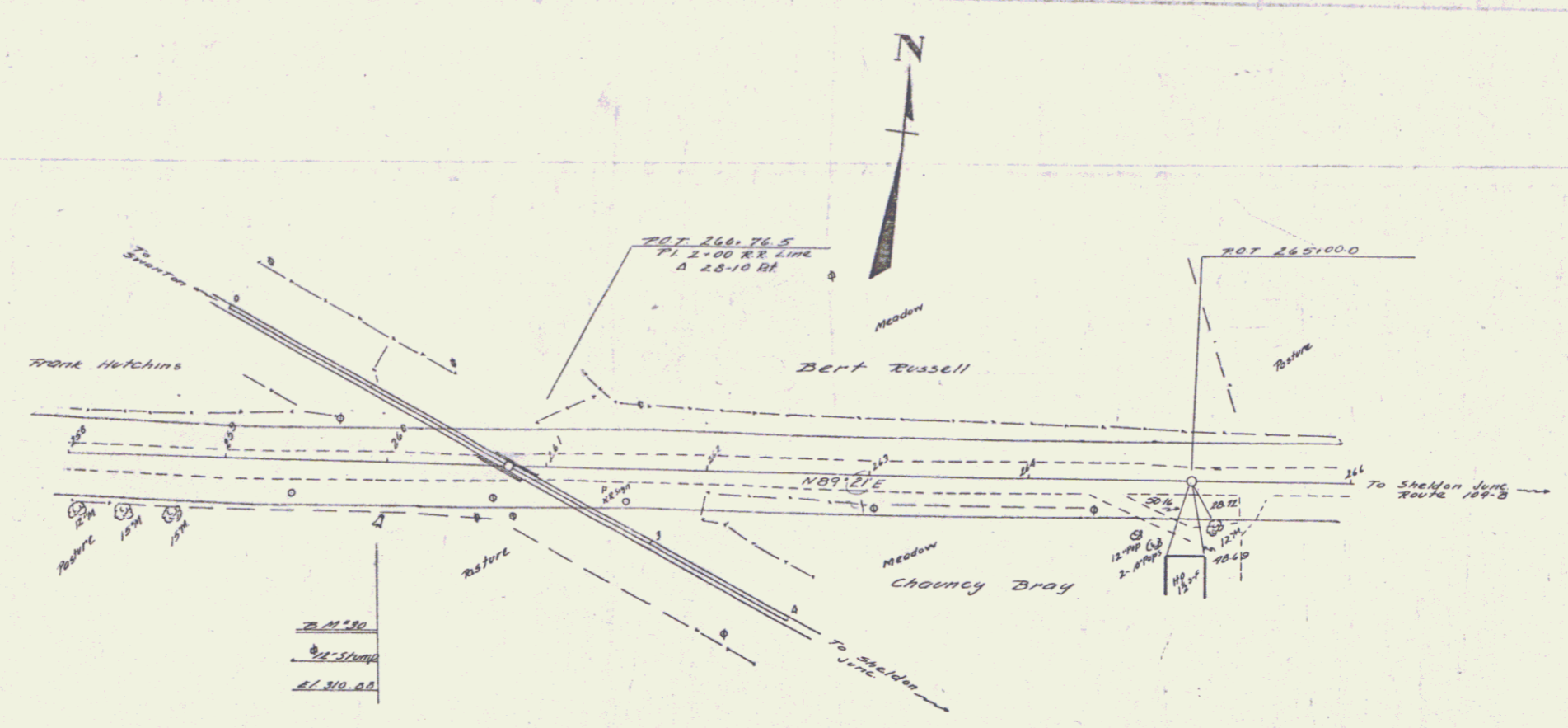
SERIES F.A.S. NO. 201C
 SHEET 9 OF 60



| | |
|-----|-------|
| 217 | 298.0 |
| 218 | 300.0 |
| 219 | 301.0 |
| 220 | 300.0 |
| 221 | 299.0 |
| 222 | 298.0 |
| 223 | 297.0 |
| 224 | 296.0 |
| 225 | 295.0 |
| 226 | 294.0 |
| 227 | 293.0 |
| 228 | 292.0 |
| 229 | 291.0 |
| 230 | 290.0 |
| 231 | 289.0 |
| 232 | 288.0 |
| 233 | 287.0 |

| | |
|-----|-------|
| 217 | 298.0 |
| 218 | 300.0 |
| 219 | 301.0 |
| 220 | 300.0 |
| 221 | 299.0 |
| 222 | 298.0 |
| 223 | 297.0 |
| 224 | 296.0 |
| 225 | 295.0 |
| 226 | 294.0 |
| 227 | 293.0 |
| 228 | 292.0 |
| 229 | 291.0 |
| 230 | 290.0 |
| 231 | 289.0 |
| 232 | 288.0 |
| 233 | 287.0 |

| | | | | |
|----------|------|------|----|----|
| DATE | 2010 | 1937 | 13 | 60 |
| BY | | | | |
| CHECKED | | | | |
| APPROVED | | | | |



B.M. 30 SPIKE IN 12" STUMP 34.5' RT. STA. 258+06 ELEV. 310.88

VT 78 Highway
 SERIES ERS NO 201C
 SHEET 13 OF 60