

INDEX OF SHEETS

SHEET NO. 1	TITLE PAGE
" 2	28-2A TYPICAL CROSS-SECTION OF IMPROVEMENT (GRADING, BASE, DRAINAGE, & GUARD RAIL WITH BANKING AND WIDENING TABLES)
" 3	BANKING AND WIDENING TABLES (DOUBLE TRACK COAT OF REFINED TAR (ITEM 29))
" 4-13	PLAN AND PROFILE STA.
" 14	STD. STRUCT. SHEET S-28 PIPE CULVERTS
" 15	" " S-30 GUARD RAIL
" 16	" " S-30A STANDARD UNDERDRAIN
" 17	" " S-31 BOUNDARY MARKERS
" 18	" " S-31 BOUNDARY MARKERS
" 19	" " SCW-4 4' x 4' R.C. BOX
" 20	" " S-40 BARRICADES SIGNS & LIGHTS
" 21	" " S-41 ROUNDING OF CUT SLOPES
" 22-60	CROSS-SECTIONS

Standard Structure Sheets
 Approved by the Chief Engineer
 528 July 11, 1933
 530 Aug. 13, 1934
 531 July 25, 1934

STATE OF VERMONT
 STATE HIGHWAY DEPARTMENT

PLAN AND PROFILE OF PROPOSED
 STATE HIGHWAY
 FEDERAL AID PROJECT

TOWN OF HIGHGATE

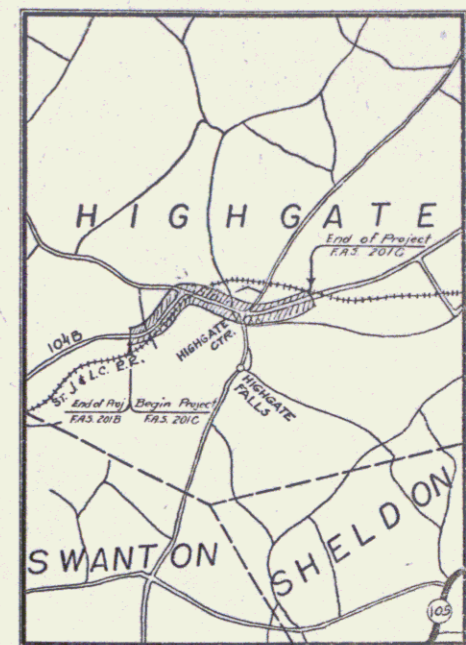
SWANTON - HIGHGATE ROAD

BEGINNING AT A POINT 1.339 MILES NORTHEAST OF THE SWANTON-HIGHGATE TOWN LINE, ON ROUTE 104B, & EXTENDING 2.214 MILES NORTHEASTERLY TO A POINT 0.451 MILES NORTHEAST OF THE INTERSECTION WITH THE HIGHGATE FALLS ROAD.

LENGTH OF PROJECT 11694.7 FT. = 2.214 MI.

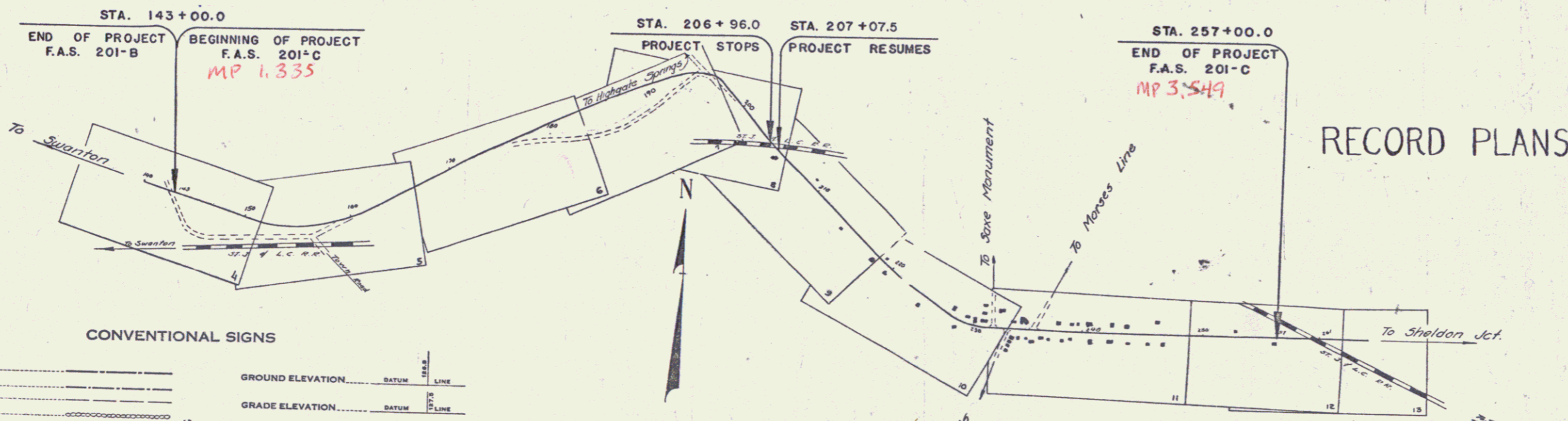
ROUTE: VT-78
 Project: FAS 201C
 PIN: OOR436
 DATE: 06/13/1938

FED. ROAD DIST. NO.	STATE	F.A.A. PROJ. NO.	FISCAL YEAR	CONTRACT NO.	TOTAL SHEETS
9	Vt.	201-C	1938	1	60



SCALE 1" = 1 MILE
 RIGHT-OF-WAY DIVISION
 TOWN FILE

PERPETUAL
 Plans of VT-78
 (To Be Returned To E.O.W. Division)



RECORD PLANS

CONVENTIONAL SIGNS

- COUNTY LINE
- TOWN LINE
- FENCE LINE
- STONE WALL
- UNFENCED PROPERTY
- GUARD RAIL
- TRAVELED WAY
- RAILROAD
- RETAINING WALL
- CENTER LINE
- SURVEY LINE
- CULVERT
- DROP INLET
- TROLLEY POLE
- POWER POLE
- TELEPHONE POLE
- TREES
- HEDGE

- GROUND ELEVATION
- GRADE ELEVATION

- CURVE DATA
- DEFLECTION ANGLE
 - DEGREE OF CURVE
 - RADIUS OF CURVE
 - TANGENT DISTANCE
 - LENGTH OF CURVE
 - EXTERNAL DISTANCE
 - POINT OF INTERSECTION
 - POINT OF CURVE
 - POINT OF TANGENT
 - POINT ON TANGENT

SCALES

TITLE	1" = 600'
TYPICAL	1" = 2'
PLAN	1" = 50'
PROFILE	HOR. 1" = 50'
	VER. 1" = 10'
CROSS SECTIONS	1" = 5'

These plans are subject to such revisions as may be required by the Bureau of Public Roads or the Commissioner of Highways. Construction is to be carried on in accordance with the plans and the Standard Road & Bridge Specifications of 1936 as approved Dec. 23, 1936 by the Bureau of Public Roads, including all subsequent approved revisions and such revised Specifications and Special Provisions as are submitted with the plans.

APPROVED: *J. E. Sargent*
 COMMISSIONER OF HIGHWAYS
 SUBMITTED BY ORDER OF THE STATE HIGHWAY BOARD

NOTE: ANY FURTHER INFORMATION CONCERNING FINAL QUANTITIES, POINTS OR OTHER DETAILS RELATIVE TO THIS PROJECT MAY BE FOUND IN EITHER THE FIELD BOOKS OR THE ESTIMATE FILE.

RECOMMENDED [Signature]
 DISTRICT ENGINEER BUREAU OF PUBLIC ROADS
 RECOMMENDED FOR APPROVAL [Signature]
 CHIEF ENGINEER BUREAU OF PUBLIC ROADS
 APPROVED [Signature]
 DIRECTOR - BUREAU OF PUBLIC ROADS

Approved *James G. Hill* District Highway Commissioner
 Correct *July 19 1938* Road Engineer
 SERIES FAS NO. 201C FILED SHEET (1) OF 60

DIST. #8 PLANS