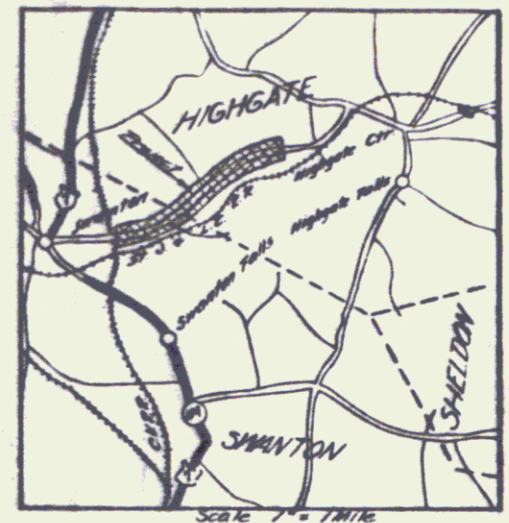


1-1 PLAN AND PROFILE GRA.
 12 STANDARD STRUCTURE SHEET 3-20 PIPE CULVERTS
 13 " " " " 3-30 GUARD RAIL
 14 " " " " 3-40 DRAINAGE, ETC.
 15 " " " " 3-50 TRIMMING OF SLOPES
 16 DETAILS OF 4x4 BOX CULVERT
 17-18 CROSS SECTIONS

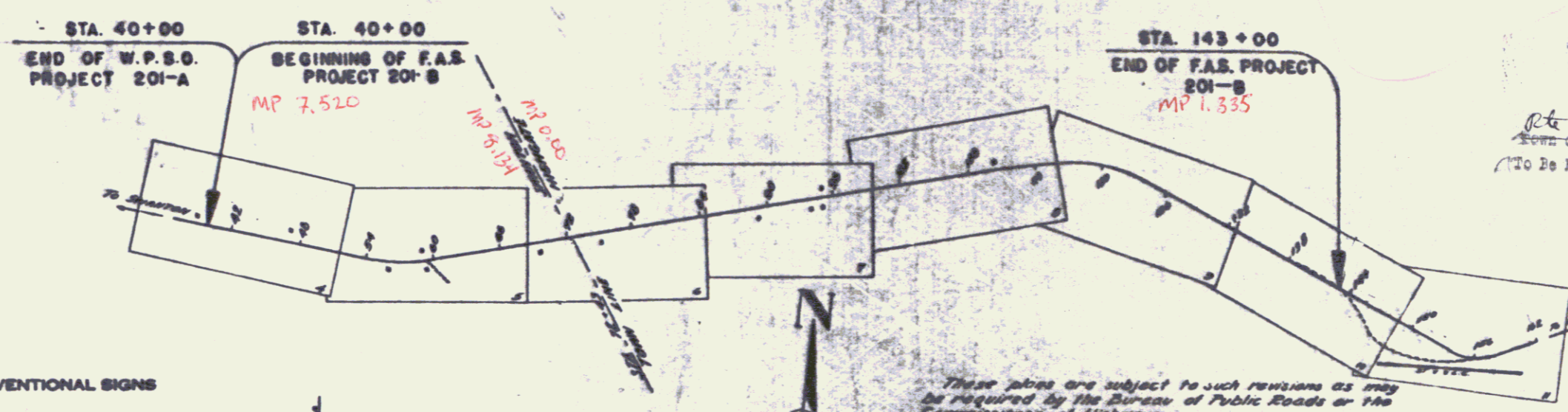
STANDARD STRUCTURE SHEETS APPROVED
 BY THE CHIEF ENGINEER
 3-20 JULY 14, 1933
 3-30 AUG 13, 1933

STATE HIGHWAY DEPARTMENT
PLAN AND PROFILE OF PROPOSED
STATE HIGHWAY
FEDERAL AID PROJECT
TOWNS OF SWANTON - HIGHGATE
SWANTON-HIGHGATE ROAD



BEGINNING AT A POINT 3243 FT. S. WESTERLY FROM THE SWANTON-HIGHGATE
 TOWN LINE & EXTENDING N. EASTERLY 1.952 MI.
 LENGTH OF PROJECT 10311.3 FT. = 1.952 MI.

ROUTE: VT 48
 PROJECT: FAS 201-B
 P.N.: 00R435
 DATE: 10/15/1937



RIGHT-OF-WAY DIVISION
 TOWN FILE
 PERPETUAL
 Town of 478
 (To Be Returned To R.O.W. Division)

APPROVED: October 15, 1937
H.E. August
 COMMISSIONER OF HIGHWAYS
 SUBMITTED BY ORDER OF THE STATE HIGHWAY BOARD

These plans are subject to such revisions as may
 be required by the Bureau of Public Roads or the
 Commissioner of Highways.
 Construction is to be carried on in accordance with
 the plans and Standard Road and Bridge Specifications
 of 1936 as approved Dec. 23, 1936 by the Bureau of
 Public Roads including all subsequent approved
 revisions and such revised specifications and special
 provisions as are submitted with the plans.

CONVENTIONAL SIGNS

| | |
|-------------------|------------------|
| COUNTY LINE | GROUND ELEVATION |
| TOWN LINE | FENCE LINE |
| STONE WALL | GRADE ELEVATION |
| UNFENCED PROPERTY | |
| GUARD RAIL | |
| TRAVELLED WAY | |
| RAILROAD | |
| RETAINING WALL | |
| CENTER LINE | |
| SURVEY LINE | |
| CULVERT | |
| DROP INLET | |
| WINDLEY POLE | |
| POWER POLE | |
| TELEPHONE POLE | |
| WATER | |
| NEEDLE | |

CURVE DATA

| | |
|-----------------------|----------|
| REFLECTION ANGLE | Δ |
| RADIUS OF CURVE | R |
| TANGENT DISTANCE | T |
| LENGTH OF CURVE | L |
| EXTERNAL DISTANCE | E |
| POINT OF INTERSECTION | P. I. |
| POINT OF CURVE | P. C. |
| POINT OF TANGENCY | P. T. |
| POINT ON TANGENT | P. O. T. |

SCALES

| | |
|---------------|-----------|
| TITLE | 1" = 600' |
| TYPICAL | 1" = 2' |
| PLAN | 1" = 20' |
| PROFILE | 1" = 20' |
| CROSS SECTION | 1" = 4' |

APPROVED: Oct 15 1937
 H.E. August
 COMMISSIONER OF HIGHWAYS
 SUBMITTED BY ORDER OF THE STATE HIGHWAY BOARD

RECOMMENDED: _____
 DISTRICT ENGINEER BUREAU OF PUBLIC ROADS
 RECOMMENDED FOR APPROVAL: _____
 CHIEF ENGINEER BUREAU OF PUBLIC ROADS
 APPROVED: _____
 DISTRICT ENGINEER BUREAU OF PUBLIC ROADS

Approved Oct 15 1937 Corred Oct 15 1937
 State Highway Department
 District Highway Engineer

- 478
 SERIES PAS NO. 107-B FILED
 SHEET 1 OF 1