

INDEX OF SHEETS

SHEET NO. 1	TITLE PAGE
" 2	262 TYPICAL CROSS-SECTION OF IMPROVEMENT CRUSHED STONE MIXED-IN-PLACE SURFACE COURSE WITH CUT-BACK ASPHALT AND FINE CMT. OF ASPHALT TPO
" 3	BANKING AND WIDENING TABLES
" 4-25	PLAN AND PROFILE
" 26	DETAIL OF MULTI-PLATE PIPE
" 27	STD. STRUCT. SHEET S28-PIPE CULV.
" 28	" " S29-BOX CULV.
" 29	" " S30-GUARD RAIL
" 30	" " S31-BOUNDARY MARKERS
" 31	" " S40-BARRICADES SIGNS & LIGHTS
" 32-95	CROSS SECTIONS

STATE OF VERMONT
STATE HIGHWAY DEPARTMENT

PLAN AND PROFILE OF PROPOSED
STATE HIGHWAY

PUBLIC WORKS ADMINISTRATION - DOCKET NO. 1043

TOWN OF SWANTON

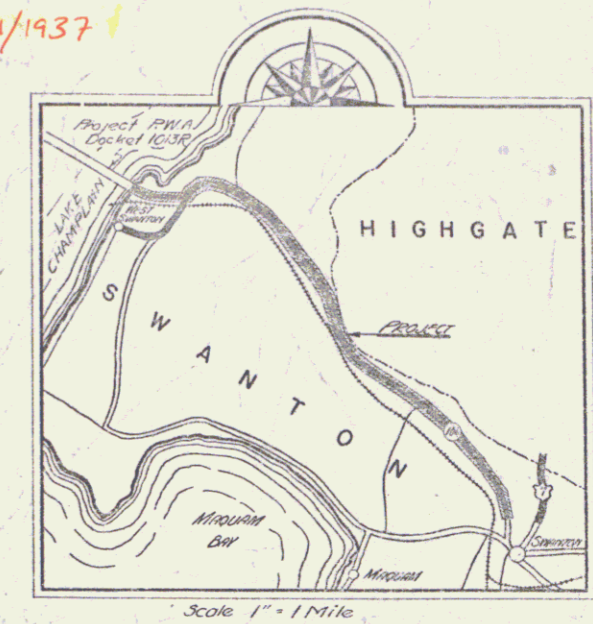
ALBURG - SWANTON ROAD

BEGINNING AT THE EAST END OF THE MISSISQUOI BAY PROJECT
AND EXTENDING SOUTHEASTERLY 5.891 MILES TO THE SWANTON
VILLAGE LIMITS

LENGTH OF PROJECT: 31,109.4 FEET = 5.891 MILES

Route VT 78
Project ST 219-M
P.n # 00R430
Date 6/21/1937

PUB. ROAD DIST. NO.	STATE	PROJECT NO.	YEAR	SHEET NO.	TOTAL SHEETS
9	VT	219-M	1937	1	95



STA 42+90.0
END OF PROJ. P.W.A. DOCKET VT. # 1013R
BEGINNING OF PROJECT STATE 219-M MP 0.453



RIGHT-OF-WAY DIVISION
TOWN FILE
PERPETUAL
Town of VT 78
[To Be Returned To R.O.W. Division]

APPROVED: February 23, 1937
[Signature]
COMMISSIONER OF HIGHWAYS

SUBMITTED BY ORDER OF THE STATE HIGHWAY BOARD

These plans are subject to such revisions as may be required by the Commissioner of Highways

Construction is to be carried on in accordance with the plans and Standard Road & Bridge Specifications of 1936 as approved December 23, 1936 by the Bureau of Public Roads including all subsequent approved revisions and such revised specifications and special provisions as are submitted with the plans.

MP 6.345
STA. 353+61.0
END OF PROJECT STATE 219-M

CONVENTIONAL SIGNS

COUNTY LINE	GROUND ELEVATION	DATE	LINE
TOWN LINE	GRADE ELEVATION	DATE	LINE
FENCE LINE			
STONE WALL			
UNFENCED PROPERTY			
GUARD RAIL			
TRAVELED WAY			
RAILROAD			
RETAINING WALL			
CENTER LINE			
SURVEY LINE			
CULVERT			
DROP INLET			
TROLLEY POLE			
POWER POLE			
TELEPHONE POLE			
TREES			
HEDGE			

CURVE DATA

DEFLECTION ANGLE	Δ
DEGREE OF CURVE	D
RADIUS OF CURVE	R
TANGENT DISTANCE	T
LENGTH OF CURVE	L
EXTERNAL DISTANCE	E
POINT OF INTERSECTION	P. I.
POINT OF CURVE	P. C.
POINT OF TANGENT	P. T.
POINT ON TANGENT	P. O. T.

Scales

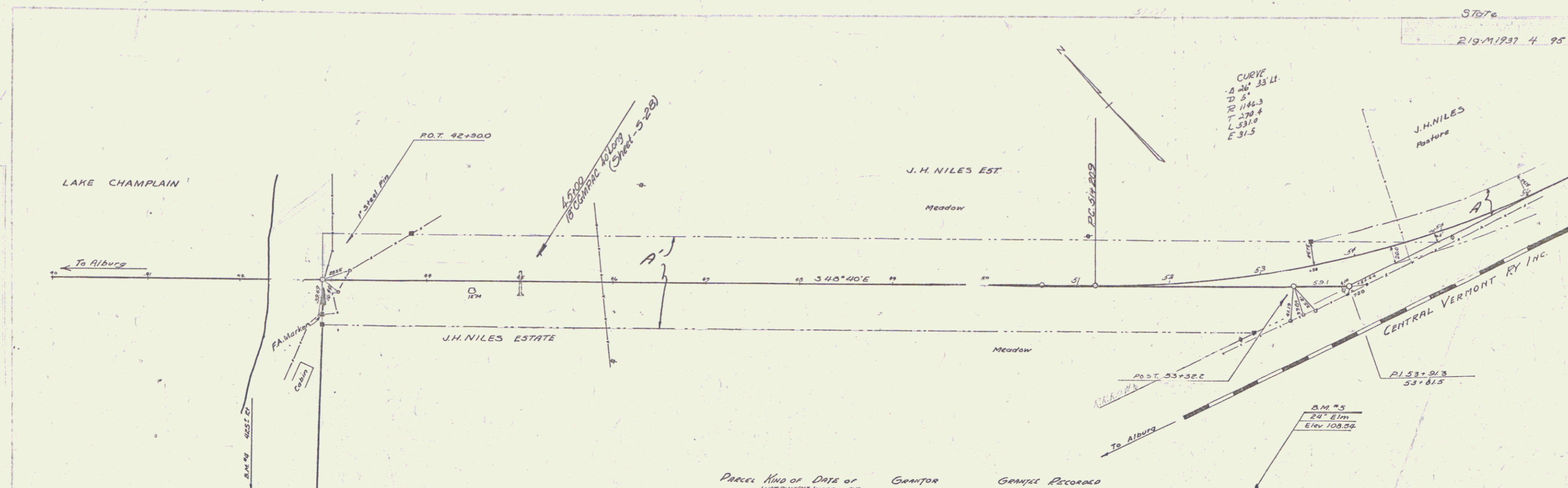
Title	1" = 1000'
Typical Plan	1" = 2'
Profile	1" = 50'
Vert.	1" = 10'
Cross Sections	1" = 5'

APPROVED: June 24, 1937
District Highway Comm.
SHEETS NO. 219-M FILED
SHEET 1 OF 95

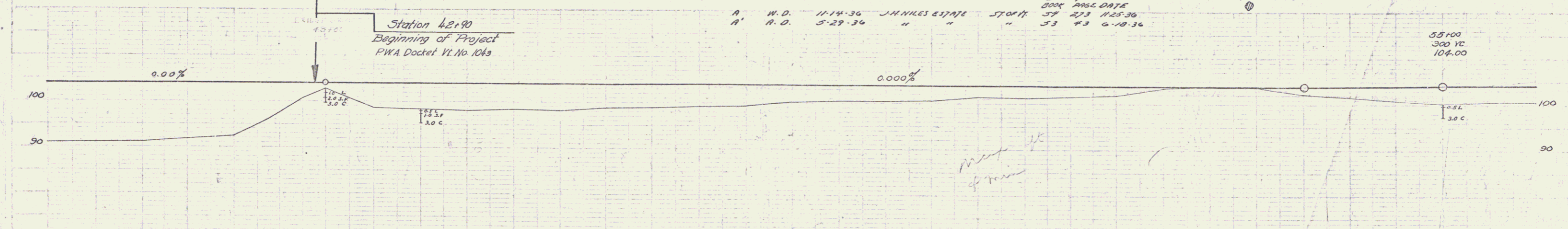
VT 78 DIST. # 8 PLANS

Swanton 37

STATE
2/19/1937 4 95



Parcel	Kind of Instrument	Date of Instrument	Grantor	Grantee	Recorded
A	W.D.	11-14-36	J.H. NILES ESTATE	STORIT	57 423 11-25-36
A'	R.D.	5-29-36	" "	" "	53 43 6-18-36

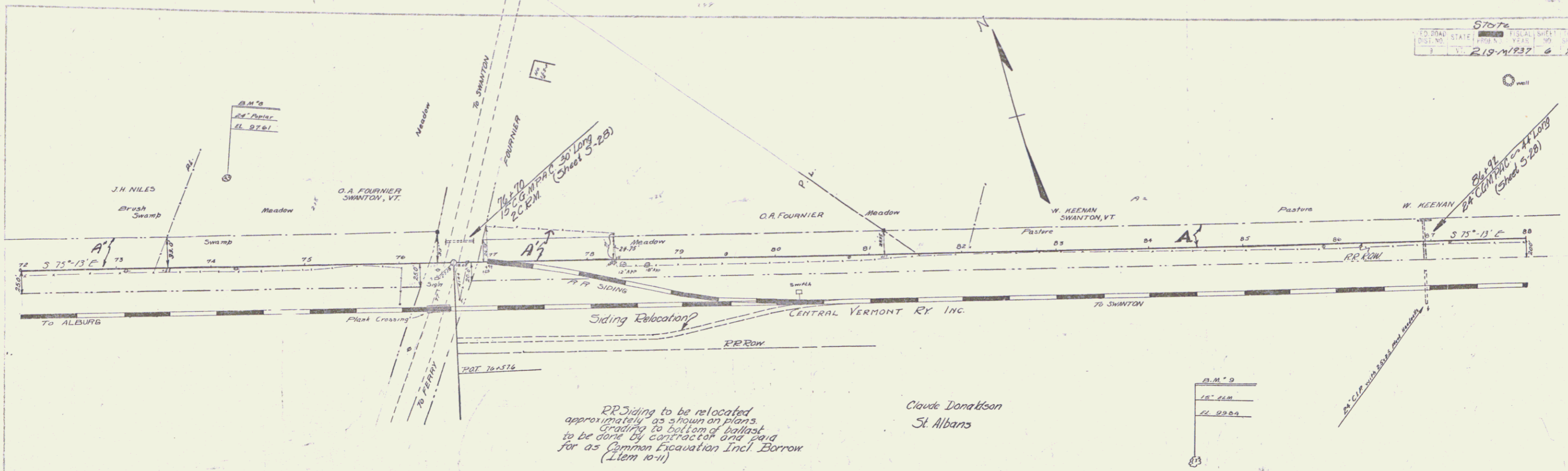


Sta 42+90 to Sta 56+00
12" Sub-base Stone (Modified)

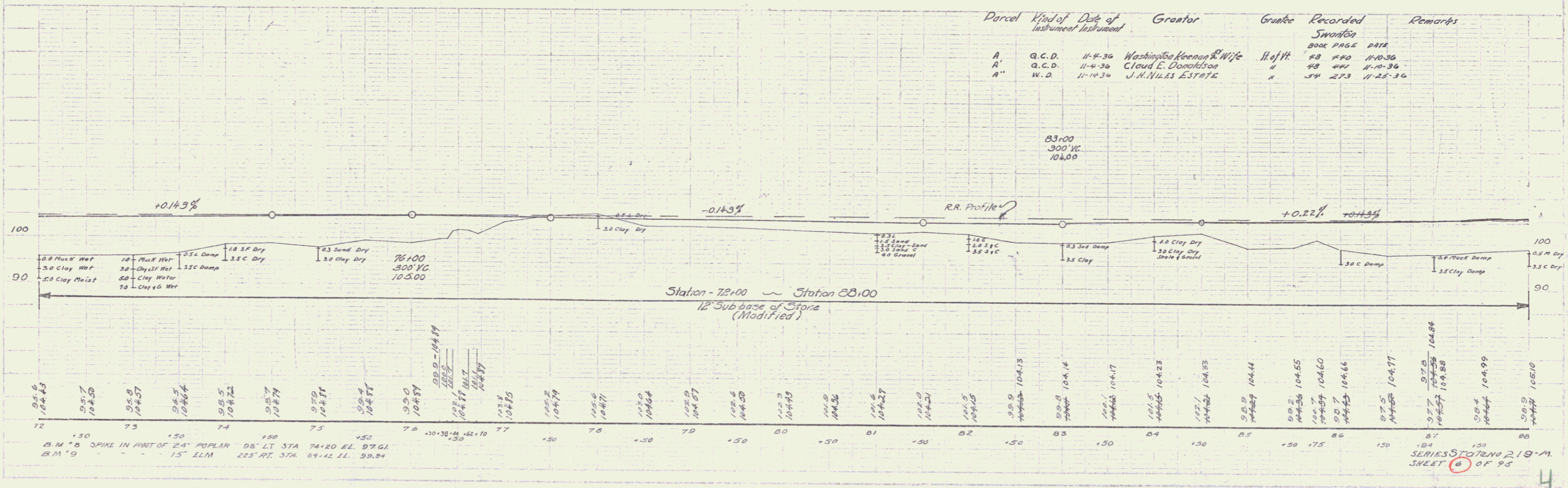
Station	Elevation
40	90.9
41	91.1
42	92.4
43	97.5
44	100.7
45	102.0
46	104.0
47	105.7
48	106.3
49	106.3
50	106.3
51	106.3
52	106.3
53	106.3
54	106.3
55	106.3
56	106.3

B.M. #4 U.S.G.S. P.B.M. D-1 1922 Bronze disc in 1'x1' conc. base 50' NE of Lottwood Station Elev. 105.649
B.M. #5 Spike in root of 24" Elm 250' E of Sta 52+42 Elev. 100.54

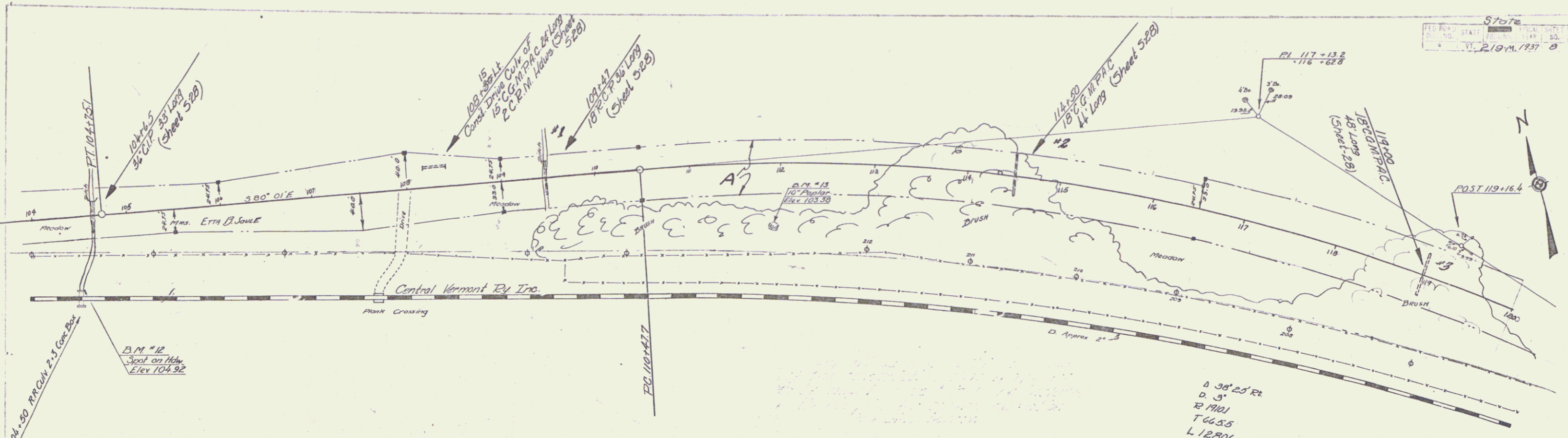
SERIES ST 102 19-M.
SHEET 12 OF 95



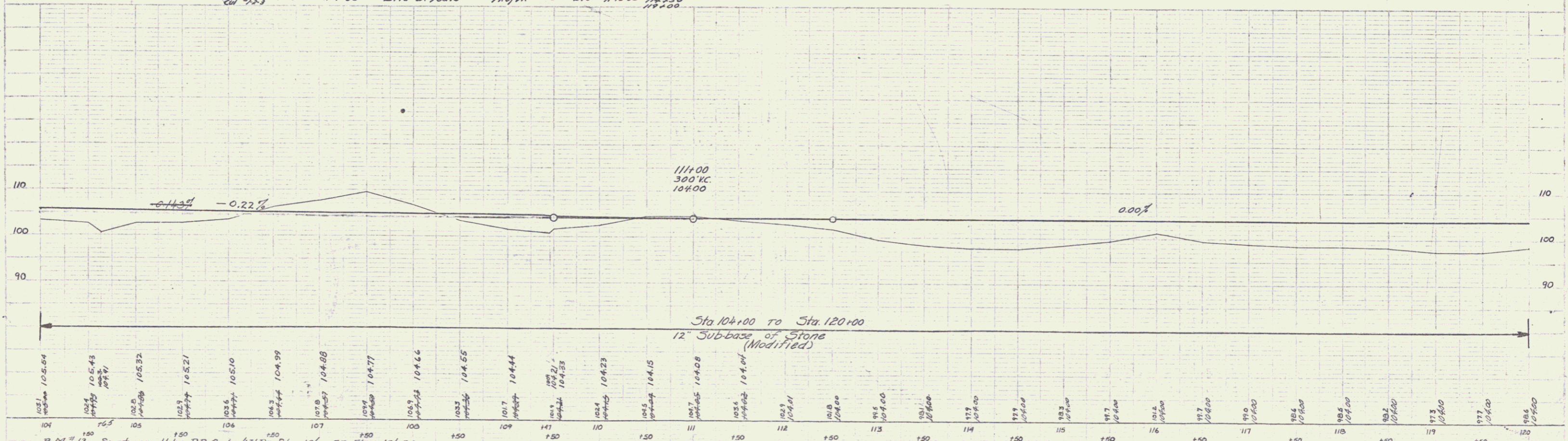
Parcel	Kind of Instrument	Date of Instrument	Grantor	Grantee	Recorded Swanton	Remarks
A	a.c.d.	11-4-36	Washington Keenan & Wife	Hoff	48 240 11-10-36	
A'	a.c.d.	11-4-36	Claud E. Donaldson	"	48 440 11-10-36	
A''	W.D.	11-14-36	J.H. NILES ESTATE	"	54 273 11-25-36	



B.M. 'B' SPIKE IN PART OF 2 1/2\"/>



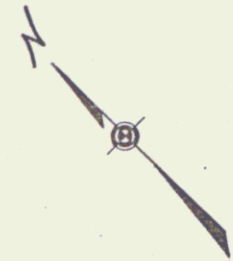
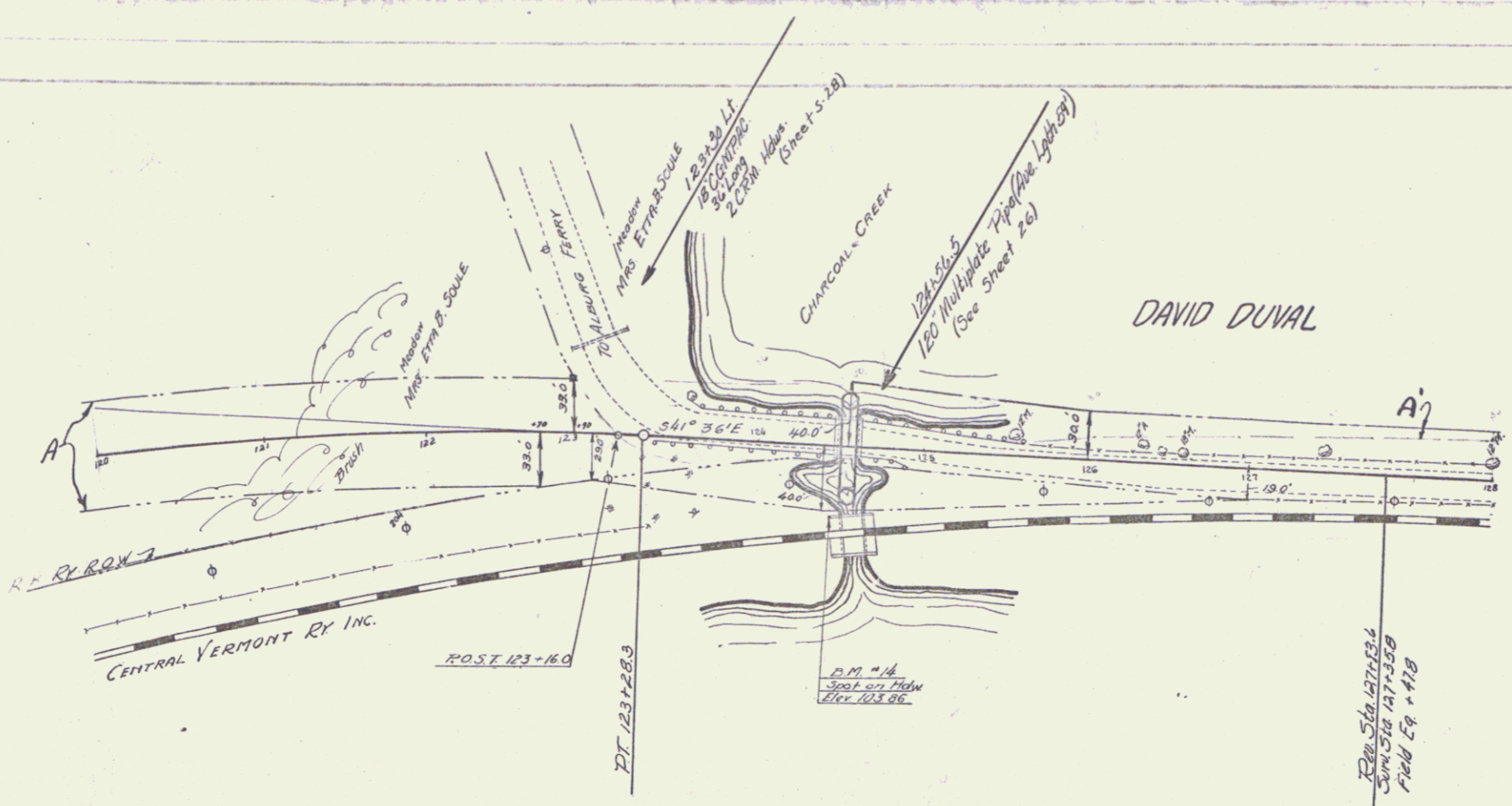
Parcel	Kind of	Date of	Grantor	Grantee	Recorded	Remarks
24	W.D.	11-4-36	Etta B. Soule	Hoff	54 270 11-10-36	Cal Sta. 104+53 104+50 104+50



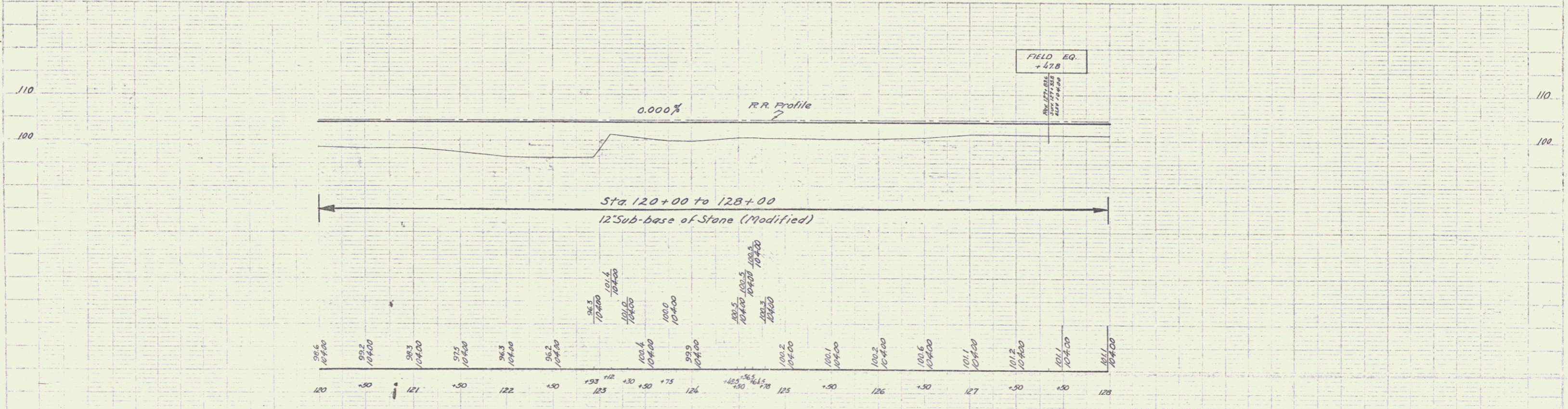
Sta. 104+00 to Sta. 120+00
 12" Sub-base of Stone (Modified)

Station	Elevation
104	105.84
105	105.43
106	105.32
107	105.21
108	105.10
109	104.99
110	104.88
111	104.77
112	104.66
113	104.55
114	104.44
115	104.33
116	104.22
117	104.11
118	104.00
119	103.89
120	103.78

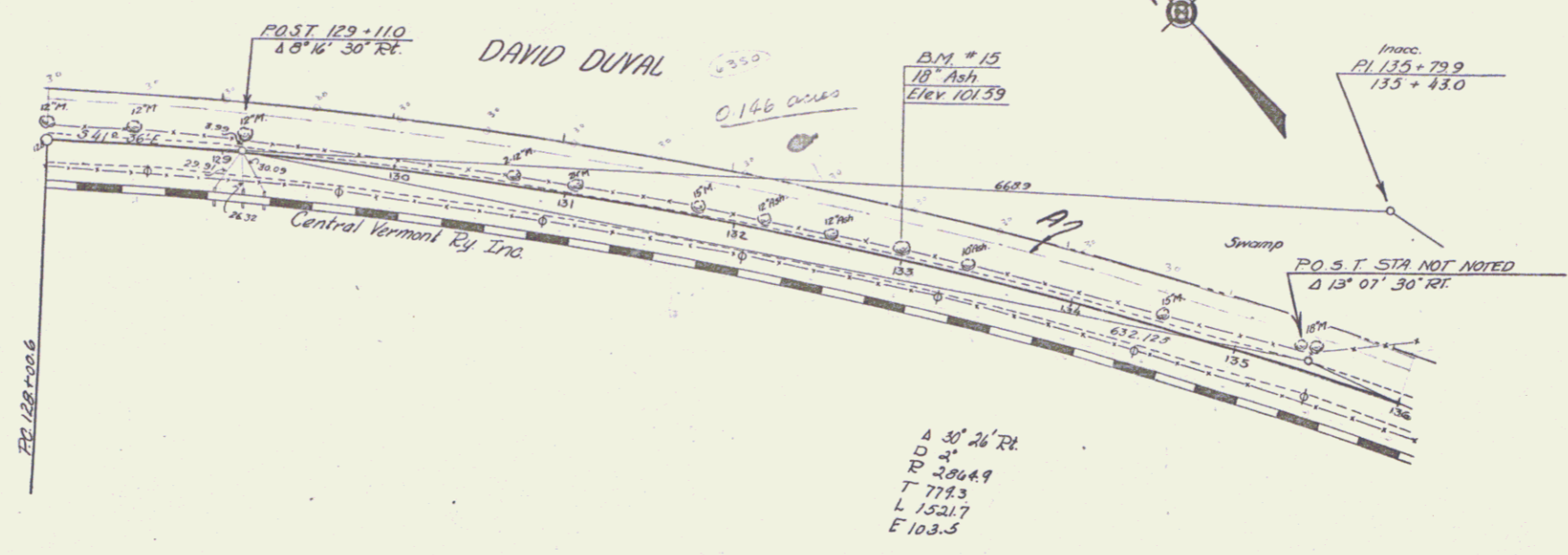
B.M. #12 Spot on Hwy. RR Cuv. 43" Rr. Sta. 104+53 Elev. 104.92
 B.M. #13 Sph. in Trunk 10" Peg 24" Lx. Sta. 111+85 Elev. 103.38



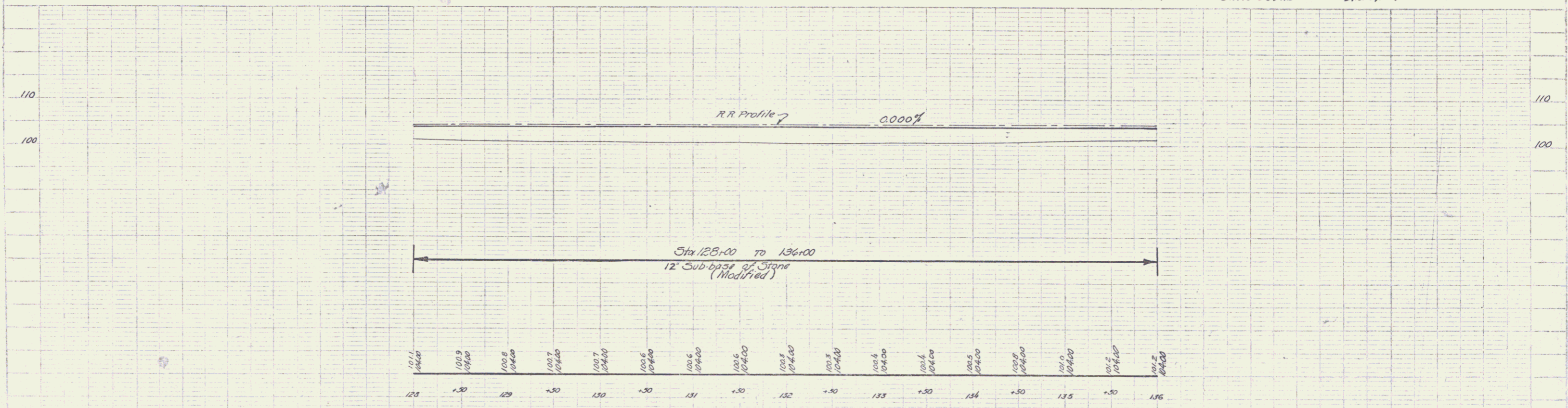
Parcel	Kind of Instrument	Date of Instrument	Grantor	Grantee	Recorded	Series	DATE
A	W.D.	11-4-36	ETTO C. SOULE	H. J. H.	BOOK 888	57	11-10-36
A'	Q.C.D.	11-6-36	DAVID DUVAL	..	48	477	11-20-36



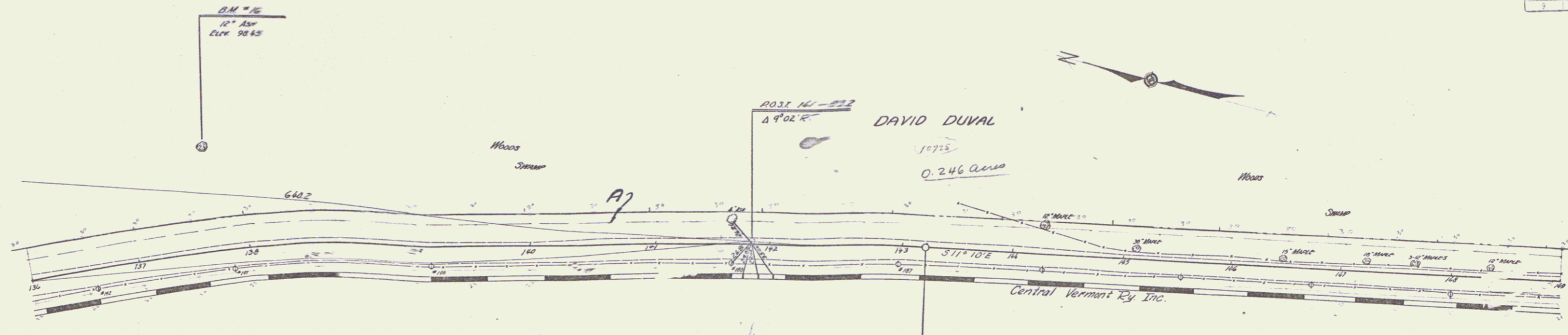
B.M. #14 Spot on Headwall 44' R.R. Sta. 124+44 Elev. 103.86



PARCEL	KIND OF INSTRUMENT	DATE OF INSTRUMENT	GRANTOR	GRANTEE RECORDS
A	G.C.D.	11-6-36	DAVID DUVAL	STATION BOOK PAGE DATE 43 444 1120-36

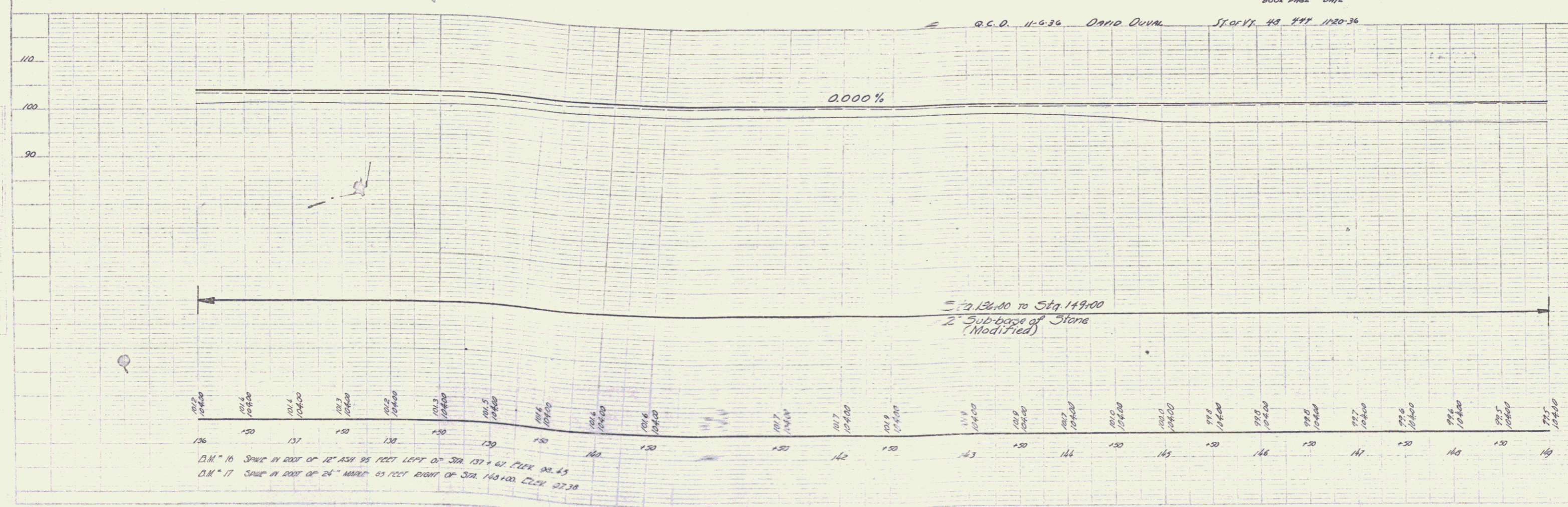


B.M. #15 Spk. in trunk 18' Ash 3' Lt. Sta 132+95 Elev 101.39



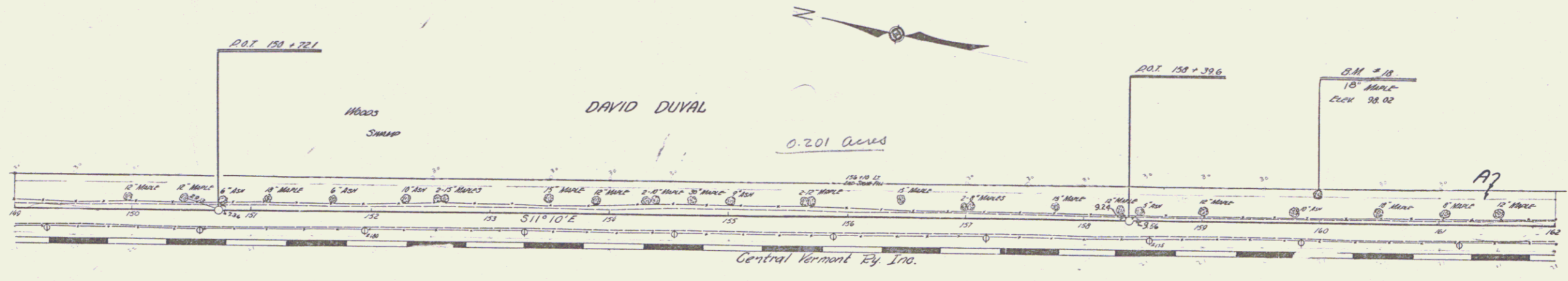
CURVE
 Δ 30° 26' Rt
 D 2°
 R 286.89
 T 779.3
 L 152.7
 E 103.5

INSTRUMENT	KIND OF INSTRUMENT	GRANTOR	GRANTEE	RECORDED	STATION	BOOK	PAGE	DATE
Q.C.D.	11-9-36	DAVID DUVAL	ST. VERMONT	48	244	1120	36	

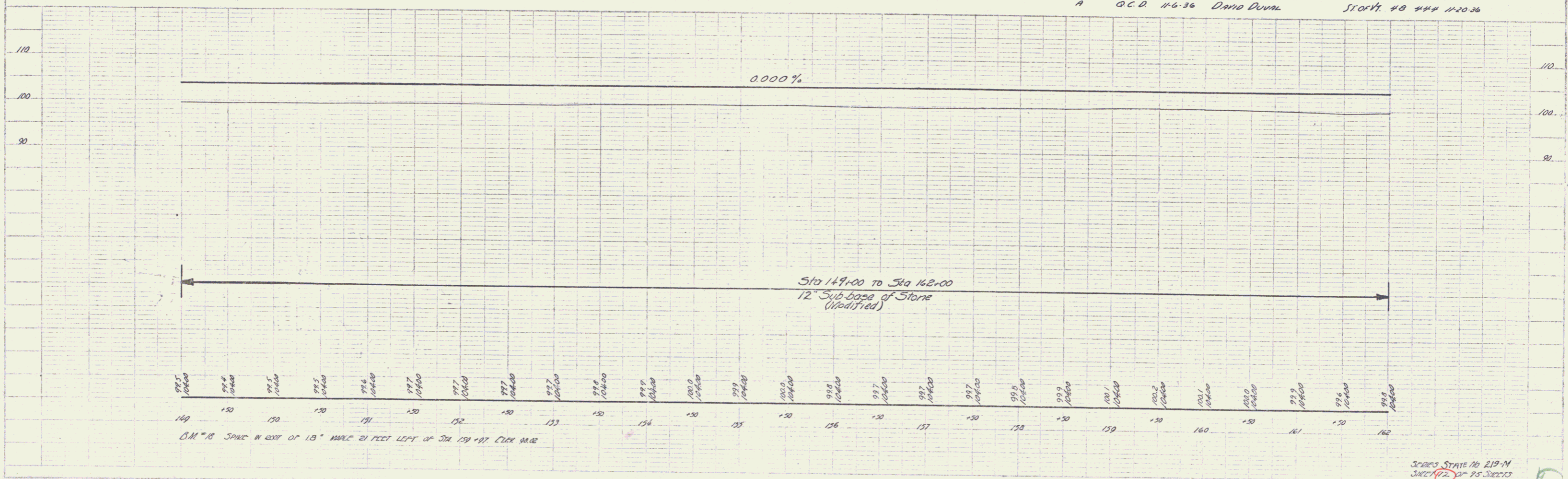


D.M. 16 SINGE IN 2007 OF 12" ASH 95 FEET LEFT OF STA 137 + 61. PLANK 90.43
 D.M. 17 SINGE IN 2007 OF 24" MAHOG 65 FEET RIGHT OF STA 145+00. ELEV 97.38

STATE VERMONT FISCAL YEAR 1919
 219-M 1917 12 95



PARCEL	KIND OF DATA OF INSTRUMENT	GRANTOR	GRANTEE	RECORDED
A	G.C.D.	11-6-36	DAVID DUVAL	STORY #8 #4# 11-20-36

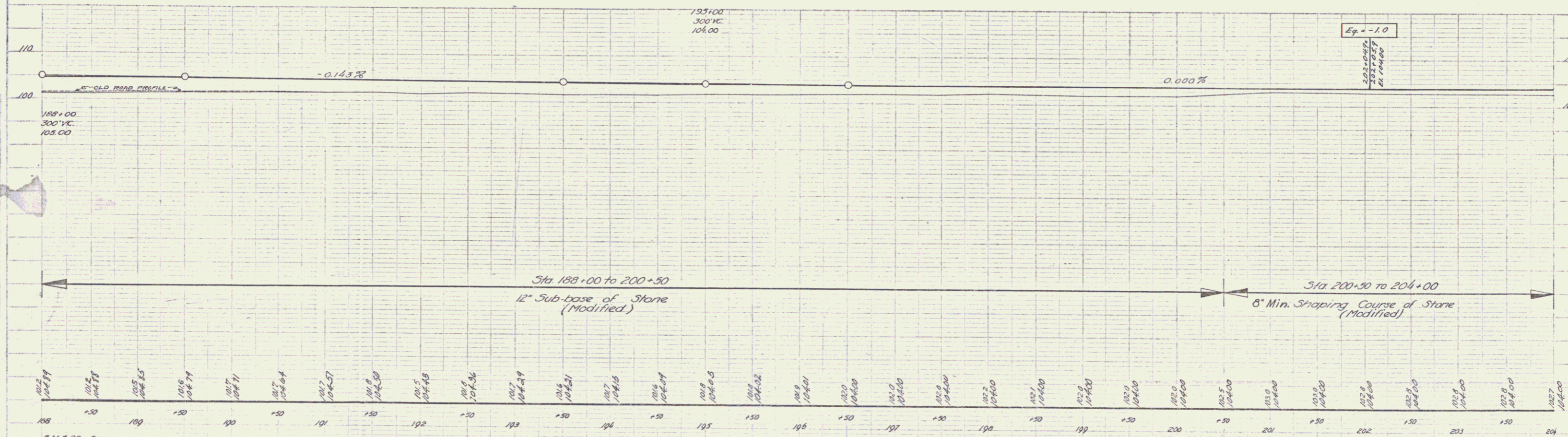
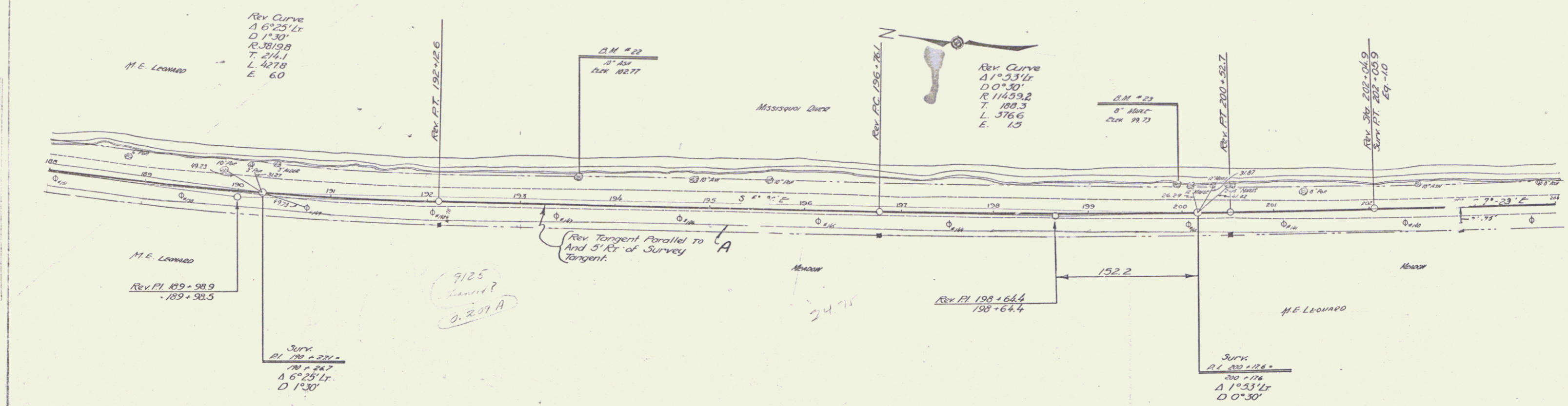


B.M. # 18 SPIKE IN ROOT OF 15' WIDE WELL 21 FEET LEFT OF STA 159 + 97 CLACK MARK

STATE VERMONT FISCAL YEAR 1919
 219-M 1917 12 95

Parcel Map of State of
 Missouri
 Grantor M. E. Leonard
 Grantee Recorded
 Swabia
 Book Page Date
 114/11 117 11-10-36

STATE
 DIST. NO. STATE
 219-M 1937 15 25



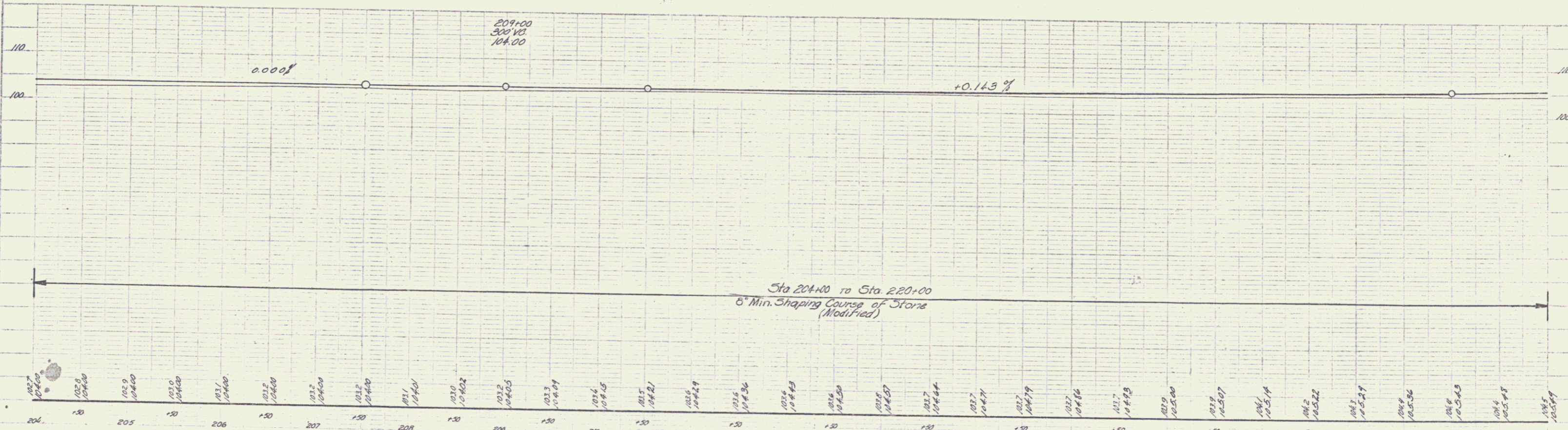
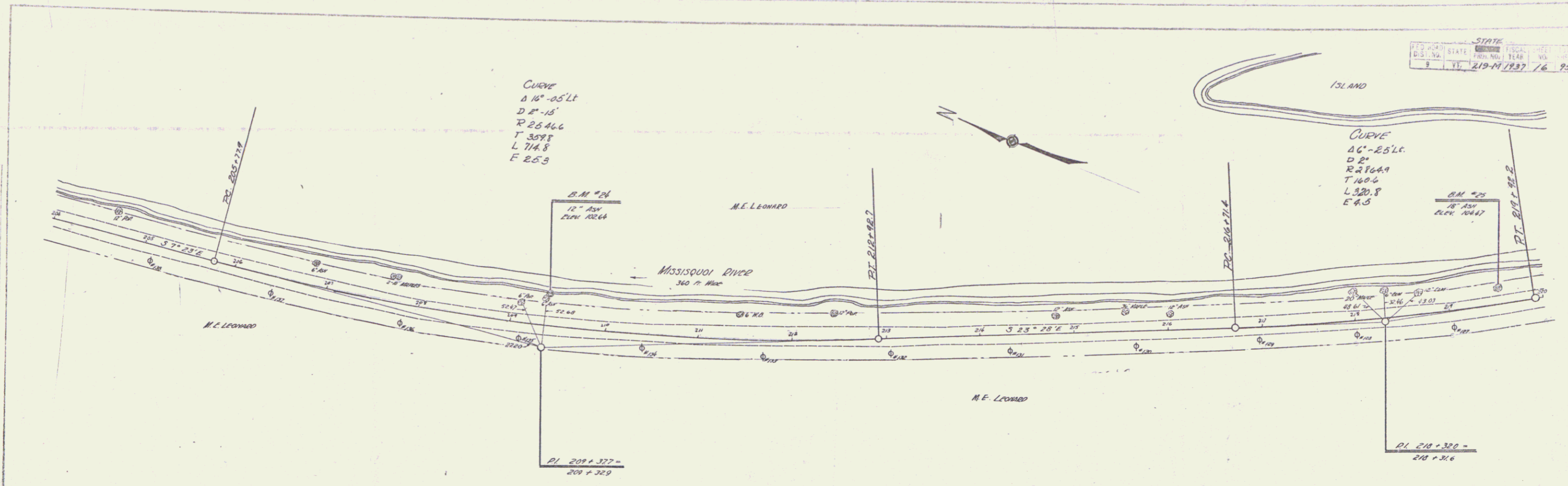
Sta 188+00 to 200+50
 12" Sub-base of Stone (Modified)

Sta 200+50 to 204+00
 8" Min. Shaping Course of Stone (Modified)

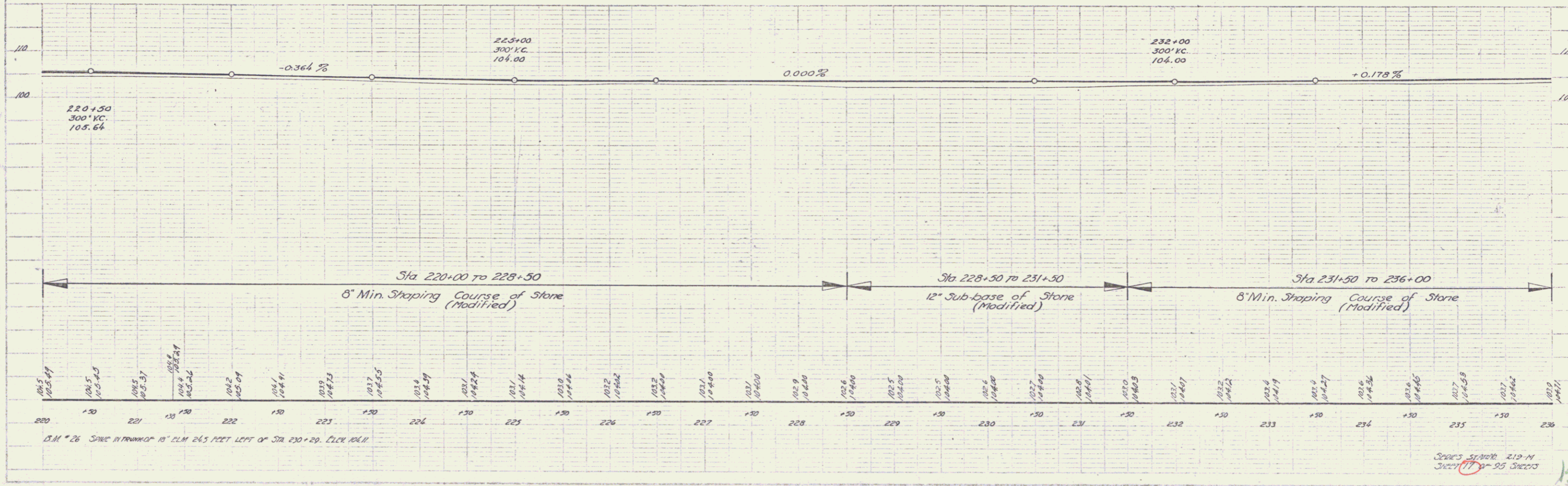
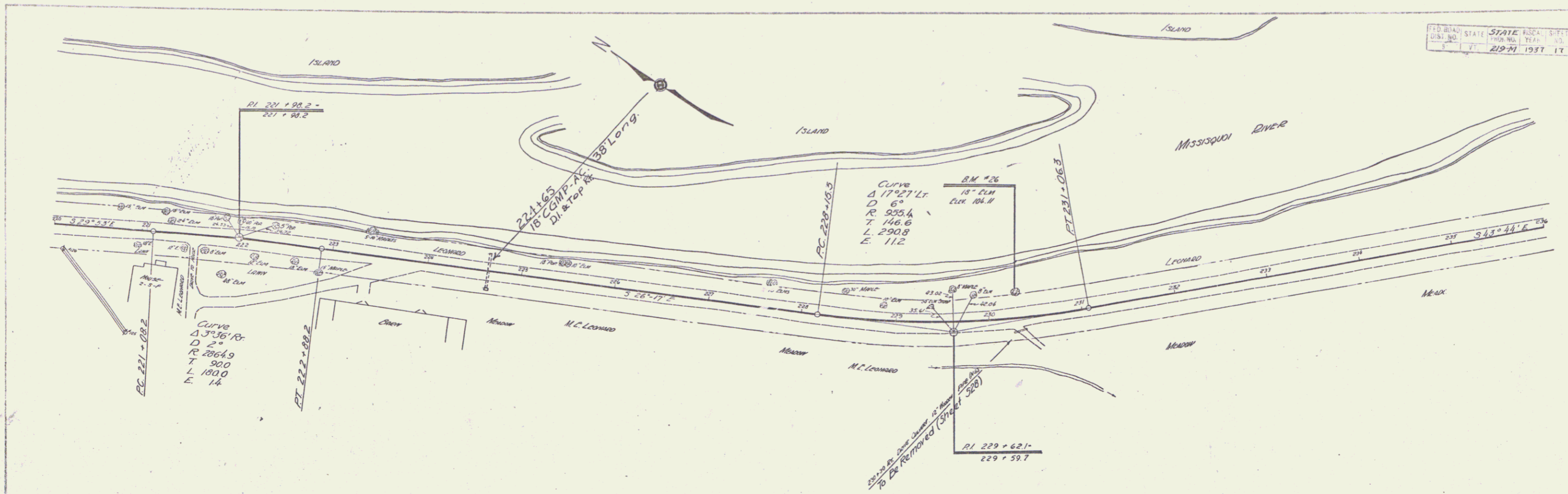
BM #22 Spike in root of 10" ash 22 feet left of Sta 183+50. CLK 182.71
 BM #23 Spike in root of 6" maple 25 feet left of Sta 199+76. CLK 19.71

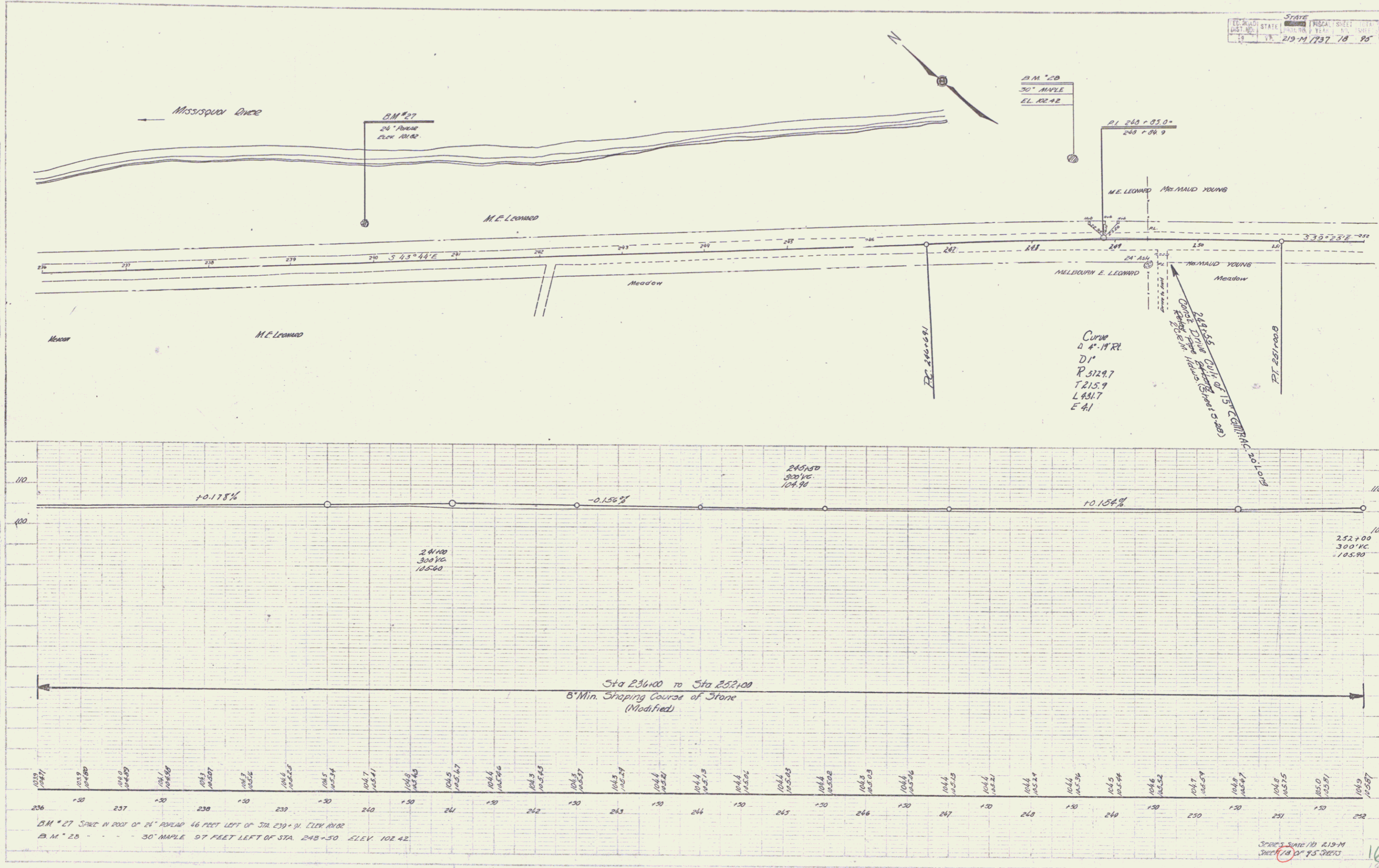
Scale State No. 219-M
 Sheet 13 of 25 Sheets

13



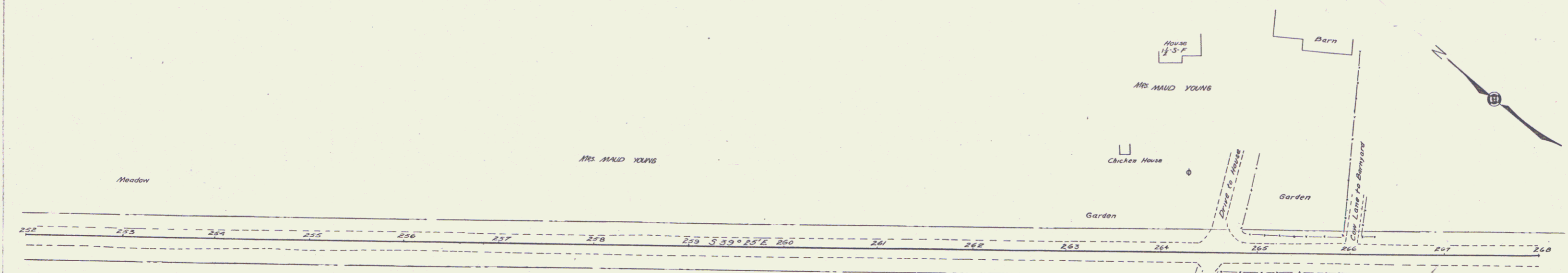
• B.M. #24 Spike in foot of 12\"/>





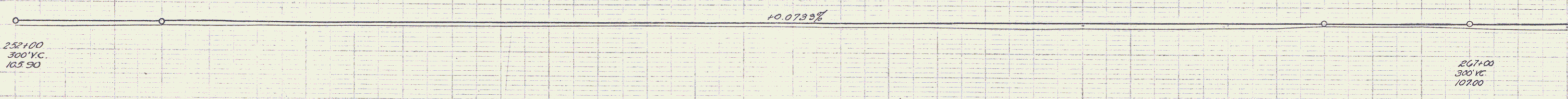
PLANT LIST
 NOTE: SEE SHEET 17 FOR DETAILS

PLANT LIST
 NOTE: SEE SHEET 17 FOR DETAILS



4" Min
 265' to 277+00

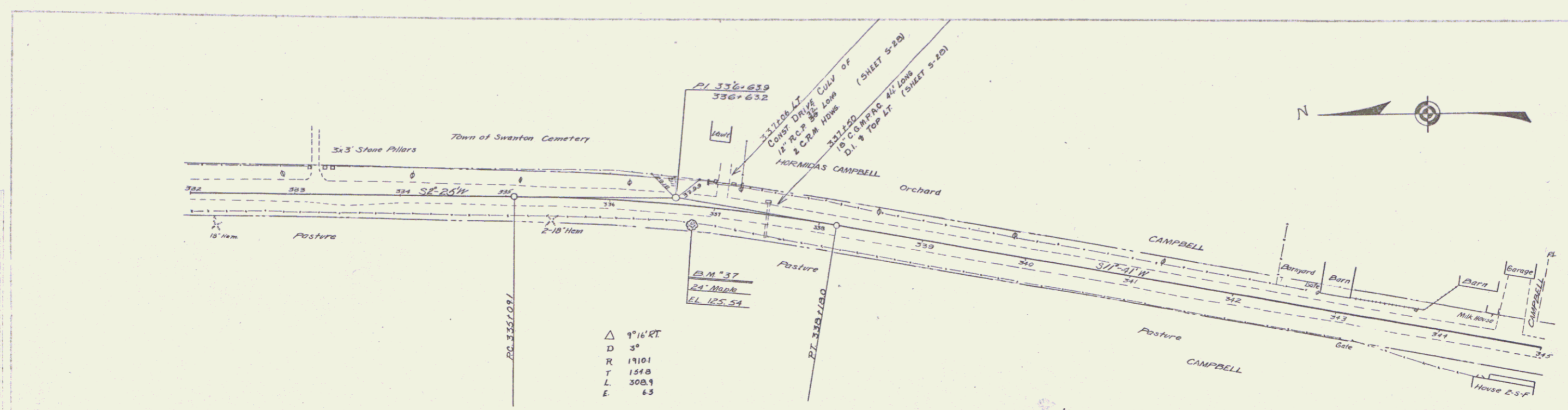
B.M. * 29
 8" Willow
 EL. 101.30



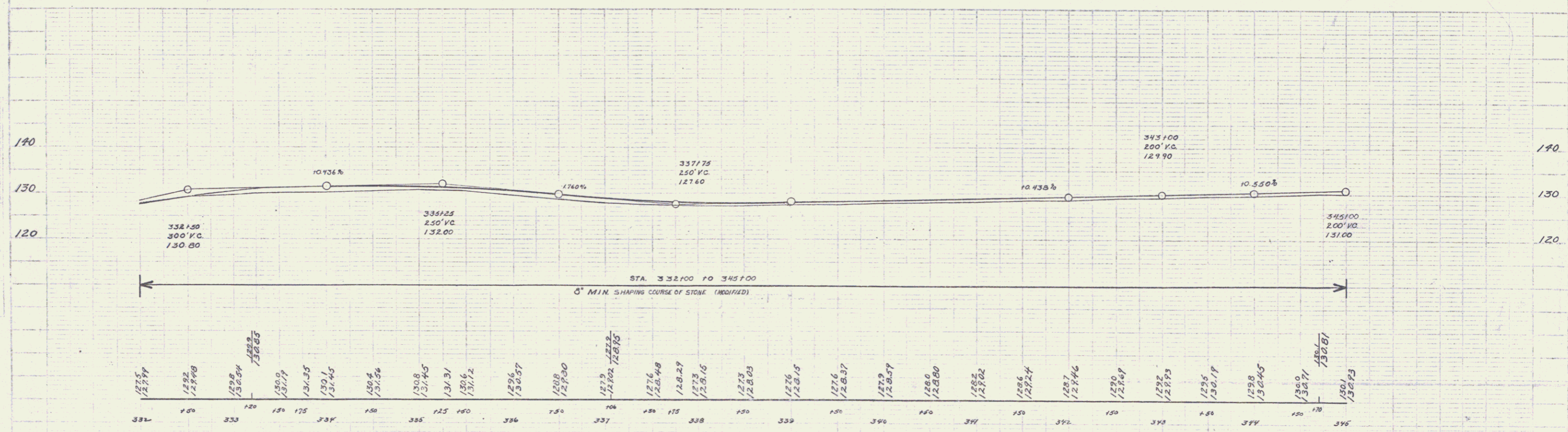
Sta 252+00 to Sta 267+00
 8" Min. Shaping Course of Stone
 (Modified)

104.9	104.9	105.0	105.1	105.1	105.2	105.3	105.3	105.4	105.5	105.5	105.6	105.6	105.7	105.7	105.8	105.8	105.9	105.9	106.0	106.0	106.1	106.1	106.2	106.2	106.3	106.3	106.4	106.4	106.5	106.5	106.6	106.6	106.7	106.7	106.8	106.8	106.9	106.9	107.0	107.0																																																																																																																																																																																																																																																																																																																																																																																																																																																																																																																																																																																																																																																																																																																																																																																																																																																																																																																																																																																																																																																																																																																																																																																																																																																																																																																																																																																																																																																																																																																	
252	+30	253	+30	254	+30	255	+30	256	+30	257	+30	258	+30	259	+30	260	+30	261	+30	262	+30	263	+30	264	+30	265	+30	266	+30	267	+30	268	+30	269	+30	270	+30	271	+30	272	+30	273	+30	274	+30	275	+30	276	+30	277	+30	278	+30	279	+30	280	+30	281	+30	282	+30	283	+30	284	+30	285	+30	286	+30	287	+30	288	+30	289	+30	290	+30	291	+30	292	+30	293	+30	294	+30	295	+30	296	+30	297	+30	298	+30	299	+30	300	+30	301	+30	302	+30	303	+30	304	+30	305	+30	306	+30	307	+30	308	+30	309	+30	310	+30	311	+30	312	+30	313	+30	314	+30	315	+30	316	+30	317	+30	318	+30	319	+30	320	+30	321	+30	322	+30	323	+30	324	+30	325	+30	326	+30	327	+30	328	+30	329	+30	330	+30	331	+30	332	+30	333	+30	334	+30	335	+30	336	+30	337	+30	338	+30	339	+30	340	+30	341	+30	342	+30	343	+30	344	+30	345	+30	346	+30	347	+30	348	+30	349	+30	350	+30	351	+30	352	+30	353	+30	354	+30	355	+30	356	+30	357	+30	358	+30	359	+30	360	+30	361	+30	362	+30	363	+30	364	+30	365	+30	366	+30	367	+30	368	+30	369	+30	370	+30	371	+30	372	+30	373	+30	374	+30	375	+30	376	+30	377	+30	378	+30	379	+30	380	+30	381	+30	382	+30	383	+30	384	+30	385	+30	386	+30	387	+30	388	+30	389	+30	390	+30	391	+30	392	+30	393	+30	394	+30	395	+30	396	+30	397	+30	398	+30	399	+30	400	+30	401	+30	402	+30	403	+30	404	+30	405	+30	406	+30	407	+30	408	+30	409	+30	410	+30	411	+30	412	+30	413	+30	414	+30	415	+30	416	+30	417	+30	418	+30	419	+30	420	+30	421	+30	422	+30	423	+30	424	+30	425	+30	426	+30	427	+30	428	+30	429	+30	430	+30	431	+30	432	+30	433	+30	434	+30	435	+30	436	+30	437	+30	438	+30	439	+30	440	+30	441	+30	442	+30	443	+30	444	+30	445	+30	446	+30	447	+30	448	+30	449	+30	450	+30	451	+30	452	+30	453	+30	454	+30	455	+30	456	+30	457	+30	458	+30	459	+30	460	+30	461	+30	462	+30	463	+30	464	+30	465	+30	466	+30	467	+30	468	+30	469	+30	470	+30	471	+30	472	+30	473	+30	474	+30	475	+30	476	+30	477	+30	478	+30	479	+30	480	+30	481	+30	482	+30	483	+30	484	+30	485	+30	486	+30	487	+30	488	+30	489	+30	490	+30	491	+30	492	+30	493	+30	494	+30	495	+30	496	+30	497	+30	498	+30	499	+30	500	+30	501	+30	502	+30	503	+30	504	+30	505	+30	506	+30	507	+30	508	+30	509	+30	510	+30	511	+30	512	+30	513	+30	514	+30	515	+30	516	+30	517	+30	518	+30	519	+30	520	+30	521	+30	522	+30	523	+30	524	+30	525	+30	526	+30	527	+30	528	+30	529	+30	530	+30	531	+30	532	+30	533	+30	534	+30	535	+30	536	+30	537	+30	538	+30	539	+30	540	+30	541	+30	542	+30	543	+30	544	+30	545	+30	546	+30	547	+30	548	+30	549	+30	550	+30	551	+30	552	+30	553	+30	554	+30	555	+30	556	+30	557	+30	558	+30	559	+30	560	+30	561	+30	562	+30	563	+30	564	+30	565	+30	566	+30	567	+30	568	+30	569	+30	570	+30	571	+30	572	+30	573	+30	574	+30	575	+30	576	+30	577	+30	578	+30	579	+30	580	+30	581	+30	582	+30	583	+30	584	+30	585	+30	586	+30	587	+30	588	+30	589	+30	590	+30	591	+30	592	+30	593	+30	594	+30	595	+30	596	+30	597	+30	598	+30	599	+30	600	+30	601	+30	602	+30	603	+30	604	+30	605	+30	606	+30	607	+30	608	+30	609	+30	610	+30	611	+30	612	+30	613	+30	614	+30	615	+30	616	+30	617	+30	618	+30	619	+30	620	+30	621	+30	622	+30	623	+30	624	+30	625	+30	626	+30	627	+30	628	+30	629	+30	630	+30	631	+30	632	+30	633	+30	634	+30	635	+30	636	+30	637	+30	638	+30	639	+30	640	+30	641	+30	642	+30	643	+30	644	+30	645	+30	646	+30	647	+30	648	+30	649	+30	650	+30	651	+30	652	+30	653	+30	654	+30	655	+30	656	+30	657	+30	658	+30	659	+30	660	+30	661	+30	662	+30	663	+30	664	+30	665	+30	666	+30	667	+30	668	+30	669	+30	670	+30	671	+30	672	+30	673	+30	674	+30	675	+30	676	+30	677	+30	678	+30	679	+30	680	+30	681	+30	682	+30	683	+30	684	+30	685	+30	686	+30	687	+30	688	+30	689	+30	690	+30	691	+30	692	+30	693	+30	694	+30	695	+30	696	+30	697	+30	698	+30	699	+30	700	+30	701	+30	702	+30	703	+30	704	+30	705	+30	706	+30	707	+30	708	+30	709	+30	710	+30	711	+30	712	+30	713	+30	714	+30	715	+30	716	+30	717	+30	718	+30	719	+30	720	+30	721	+30	722	+30	723	+30	724	+30	725	+30	726	+30	727	+30	728	+30	729	+30	730	+30	731	+30	732	+30	733	+30	734	+30	735	+30	736	+30	737	+30	738	+30	739	+30	740	+30	741	+30	742	+30	743	+30	744	+30	745	+30	746	+30	747	+30	748	+30	749	+30	750	+30	751	+30	752	+30	753	+30	754	+30	755	+30	756	+30	757	+30	758	+30	759	+30	760	+30	761	+30	762	+30	763	+30	764	+30	765	+30	766	+30	767	+30	768	+30	769	+30	770	+30	771	+30	772	+30	773	+30	774	+30	775	+30	776	+30	777	+30	778	+30	779	+30	780	+30	781	+30	782	+30	783	+30	784	+30	785	+30	786	+30	787	+30	788	+30	789	+30	790	+30	791	+30	792	+30	793	+30	794	+30	795	+30	796	+30	797	+30	798	+30	799	+30	800	+30	801	+30	802	+30	803	+30	804	+30	805	+30	806	+30	807	+30	808	+30	809	+30	810	+30	811	+30	812	+30	813	+30	814	+30	815	+30	816	+30	817	+30	818	+30	819	+30	820	+30	821	+30	822	+30	823	+30	824	+30	825	+30	826	+30	827	+30	828	+30	829	+30	830	+30	831	+30	832	+30	833	+30	834	+30	835	+30	836	+30	837	+30	838	+30	839	+30	840	+30	841	+30	842	+30	843	+30	844	+30	845	+30	846	+30	847	+30	848	+30	849	+30	850	+30	851	+30	852	+30	853	+30	854	+30	855	+30	856	+30	857	+30	858	+30	859	+30	860	+30	861	+30	862	+30	863	+30	864	+30	865	+30	866	+30	867	+30	868	+30	869	+30	870	+30	871	+30	872	+30	873	+30	874	+30	875	+30	876	+30	877	+30	878	+30	879	+30	880	+30	881	+30	882	+30	883	+30	884	+30	885	+30	886	+30	887	+30	888	+30	889	+30	890	+30	891	+30	892	+30	893	+30	894	+30	895	+30	896	+30	897	+30	898	+30	899	+30	900	+30	901	+30	902	+30	903	+30	904	+30	905	+30	906	+30	907	+30	908	+30	909	+30	910	+30	911	+30	912	+30	913	+30	914	+30	915	+30	916	+30	917	+30	918	+30	919	+30	920	+30	921	+30	922	+30	923	+30	924	+30	925	+30	926	+30	927	+30	928	+30	929	+30	930	+30	931	+30	932	+30	933	+30	934	+30	935	+30	936	+30	937	+30	938	+30	939	+30	940	+30	941	+30	942	+30	943	+30	944	+30	945	+30	946	+30	947	+30	948	+30	949	+30	950	+30	951	+30	952	+30	953	+30	954	+30	955	+30	956	+30	957	+30	958	+30	959	+30	960	+30	961	+30	962	+30	963	+30	964	+30	965	+30	966	+30	967	+30	968	+30	969	+30	970	+30	971	+30	972	+30	973	+30	974	+30	975	+30	976	+30	977	+30	978	+30	979	+30	980	+30	981	+30	982	+30	983	+30	984	+30	985	+30	986	+30	987	+30	988	+30	989	+30	990	+30	991	+30	992	+30	993	+30	994	+30	995	+30	996	+30	997	+30	998	+30	999	+30	1000	+30

B.M. * 29 SPIKE IN TRUNK OF 8" WILLOW 222' FT OF STA 260+75 EL. 101.30



Δ 9°16' RT
 D 3°
 R 19101
 T 1548
 L 308.9
 E 43



B.M. 37 SPIKE IN ROOT OF 24' MAPLE 13.5' RT. STA 336+79 EL. 125.54

