

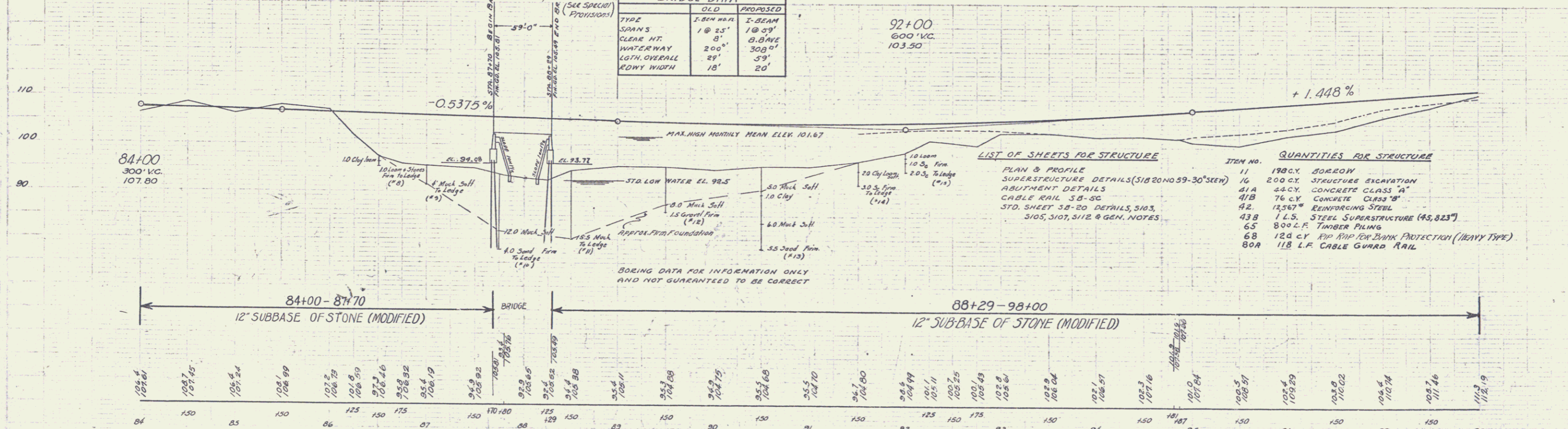
NOTE:
 FILL SHALL BE COMPLETED TO SUBGRADE FOR AT LEAST 300 FEET EACH WAY FROM ENDS OF BRIDGE AND RIP RAP SHALL BE COMPLETED TO ELEVATION OF BOTTOM OF FOOTING BEFORE BEGINNING BRIDGE CONSTRUCTION. THEN EXCAVATE TO BOTTOM OF FOOTING ELEVATION AND DRIVE PILES.

NOTE:
 It is expected that the poor foundation material will be pushed "up or ahead" 30 to 40 feet above the stream bed elevation between the abutments of the new bridge, Sta. 87+99.5 or in the stream bed upstream or downstream from the bridge. This material shall be removed upon completion of the marking of the embankments, Sta. 86+50 to Sta. 91+50, to the original stream bed elevation. This work shall be carried out in accordance with Items, Channel Excavation (See Special Provisions).

NOTE:
 Sta. 86+75 to Sta. 91+25 Fill is to be made over muck. Borings are to be made as the filling progresses to determine if full settlement has been obtained. If complete settlement has not been obtained, blasting is to be employed (See Special Provisions).

BRIDGE DATA	
	PROPOSED
TYPE	I-BEAM
SPANS	1 @ 25'
CLEAR HT.	8'
WATERWAY	30.0'
LGTH. OVERALL	29'
RDWY WIDTH	20'

PARCEL	INSTRUMENT	DATE	GRANTOR	GRANTEE	RECORDED	REMARKS
A-B-C-D-E	O.C.D.	7-21-37	L.L. Soule Estate	Sta. of W.	ALBORG	
A'	O.C.D.	8-20-37	Milan & Lillian Soule	"	ALBORG	7-27-37 90+72
A'	MAP RELEASE	8-14-37	FEDLAND BANK	"	ALBORG	8-25-37 97+15, 103+33



ITEM NO.	QUANTITIES FOR STRUCTURE
11	180 C.Y. SOREDOY
16	200 C.Y. STRUCTURE EXCAVATION
41A	24 C.Y. CONCRETE CLASS "A"
41B	76 C.Y. CONCRETE CLASS "B"
42	12587 LBS. REINFORCING STEEL
43B	1 L.S. STEEL SUPERSTRUCTURE (45,823')
65	800 L.F. TIMBER PILING
68	120 C.Y. RIP RAP FOR BANK PROTECTION (HEAVY TYPE)
80A	118 L.F. CABLE GUARD RAIL

BM # 11 S. 1/2 30' ELM 2040' RT STA 87+40 ELEV 101.20
 BM # 12 S. 1/2 18' ELM STA 95+75 ELEV 101.53

Series St. No. 219-N
 Sheet 13 of 50 Sheets.

13