

INDEX OF SHEETS

SHEET NO. 1	TITLE PAGE
2	TYPICAL CROSS SECTION OF IMPROVEMENT
3	BANKING & WIDENING TABLES
4	QUANTITY SHEET (ITEMS & DRAINAGE)
5-6	EARTHWORK SHEETS
7-10	PLAN AND PROFILE SHEETS
11	CONSTRUCTION DETAILS CD (DRAINAGE & MARKERS)
12	CONSTRUCTION DETAILS CD 2 (TYPICAL SLOPE GRADING)
13	STANDARD STRUCTURE SHEET S 40 (BARRICADES, SIGNS & LIGHTS)
14	STANDARD STRUCTURE SHEET S 40-46 (THREE CABLE GUARD RAIL)
15-29	CROSS SECTIONS

STANDARD STRUCTURE SHEET APPROVED BY THE CHIEF ENGINEER, VERMONT STATE DEPARTMENT OF HIGHWAYS S 40 JUNE 10, 1950

STATE OF VERMONT
DEPARTMENT OF HIGHWAYS
PROPOSED IMPROVEMENT

SECONDARY PROJECT

TOWNS OF CORNWALL AND SHOREHAM

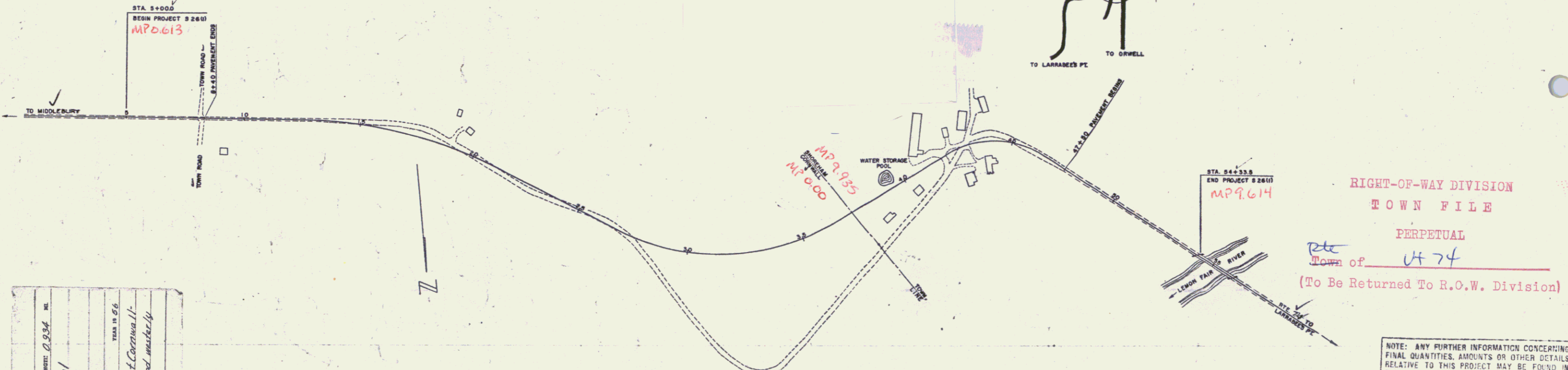
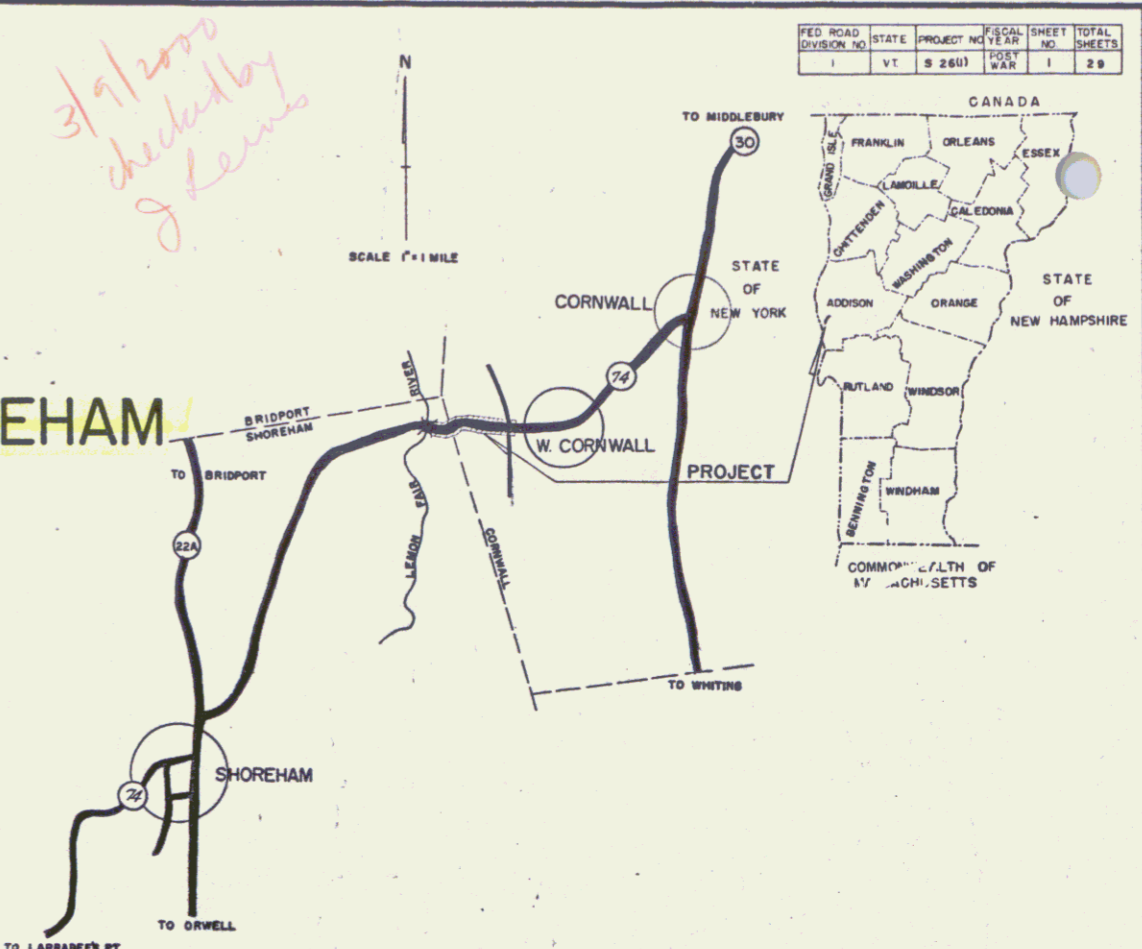
COUNTY OF ADDISON

VT. ROUTE 74

CORNWALL-SHOREHAM ROAD

BEGINNING AT A POINT 3237.0 FEET EASTERLY OF THE CORNWALL-SHOREHAM TOWN LINE AND EXTENDING WESTERLY 4933.5 FEET
TOTAL LENGTH OF PROJECT 4933.5 FEET = 0.934 MILES.

PROJECT NAME AND NUMBER		TYPE	PAVEMENT AREA
CORNWALL-SHOREHAM S 26 (1)		DOUBLE TRACK PAVEMENT	11,111 sq. yds.
RECORD PLANS			
MATERIALS			
CEMENT; Atlas Cement - Hudson, N.Y.	CGRRAL; Cable American Street & Wire Co. - New Haven, Conn.		
SAND; Casey's Plant - Hinesburg, Vt.	Paint; Erudley Labs. - Brattleboro Vt.		
STONE; " " " " " "	LEDGE ROCK; Lewis Cut on Pog		
TA; " " " " " "	Asphalt Ledge - Shoreham Vt.		
RCP; Vt. Concrete Pipe Co. - Windsor, Vt.	SAND; Bass Douglas Pit - Shoreham Vt.		
ACCOMP.; " " " " " "	GRAVEL; O'Dell's Pit - Cornwall Vt.		
REIN. STEEL; W. Structures - Shelburne, Burlington, Vt.	Muck's Pit - E. Middlebury Vt.		
CONTRACTOR; Ray Dubois	CONTRACT DATED - Dec. 21, 1955		
RES. ENGR.; C. J. Crosslett	STARTED - April 25, 1956		
RECORD PLANS; C. J. Crosslett 1-31-57	COMPLETED - Dec. 12, 1956		
	ACCEPTED - Dec. 12, 1956		



Cornwall - Shoreham
S 26 (1)
Length: 0.934 mi.
Scale: 1" = 200'
Date: Sept. 12, 1955

GROUND ELEVATION DATUM: M.S.L. LINE

GRADE ELEVATION DATUM: M.S.L. LINE

CURVE DATA

DEFLECTION OF ANGLE	A
DEGREE OF CURVE	D
RADIUS OF CURVE	R
TANGENT DISTANCE	T
LENGTH OF CURVE	L
EXTERNAL DISTANCE	E
POINT OF INTERSECTION	P.I.
POINT OF CURVE	P.C.
POINT OF TANGENT	P.T.
POINT ON TANGENT	P.O.T.
POINT ON SUB-TANGENT	P.O.S.T.

SCALES

TITLE	1" = 200'
TYPICAL	1" = 2'
PLAN	1" = 50'
PROFILE HORIZONTAL	1" = 50'
PROFILE VERTICAL	1" = 10'
CROSS-SECTIONS	1" = 5'

RIGHT-OF-WAY DIVISION
TOWN FILE
PERPETUAL
Town of VT 74
(To Be Returned To R.O.W. Division)

NOTE: ANY FURTHER INFORMATION CONCERNING FINAL QUANTITIES, AMOUNTS OR OTHER DETAILS RELATIVE TO THIS PROJECT MAY BE FOUND IN EITHER THE FIELD BOOKS OR THE ESTIMATE FILE.

Pin# 00R426

DEPARTMENT OF COMMERCE
BUREAU OF PUBLIC ROADS

THESE PLANS ARE SUBJECT TO SUCH REVISIONS AS MAY BE REQUIRED BY THE BUREAU OF PUBLIC ROADS OR THE COMMISSIONER OF HIGHWAYS.

CONSTRUCTION IS TO BE CARRIED ON IN ACCORDANCE WITH THE PLANS AND THE STANDARD ROAD AND BRIDGE SPECIFICATIONS OF 1948, AS APPROVED JULY 25, 1949 BY THE BUREAU OF PUBLIC ROADS, INCLUDING ALL SUBSEQUENT APPROVED REVISIONS AND SUCH REVISED SPECIFICATIONS AND SPECIAL PROVISIONS AS ARE SUBMITTED WITH THE PLANS.

APPROVED SECONDARY ENGINEER DATE <u>Sept. 12, 1955</u>	APPROVED CONSTRUCTION ENGINEER DATE <u>AUG 17 1955</u>	APPROVED DISTRICT ENGINEER DATE <u>Sept. 30, 1955</u>	APPROVED HIGHWAY ENGINEER DATE <u>Oct 17, 1955</u>	APPROVED CHIEF ENGINEER DATE <u>OCT 17 1955</u>
--	--	---	--	---

APPROVED _____
DISTRICT ENGINEER

DATE _____

PROJECT S NO. 26 (1)

SHEET 1 OF 29 SHEETS

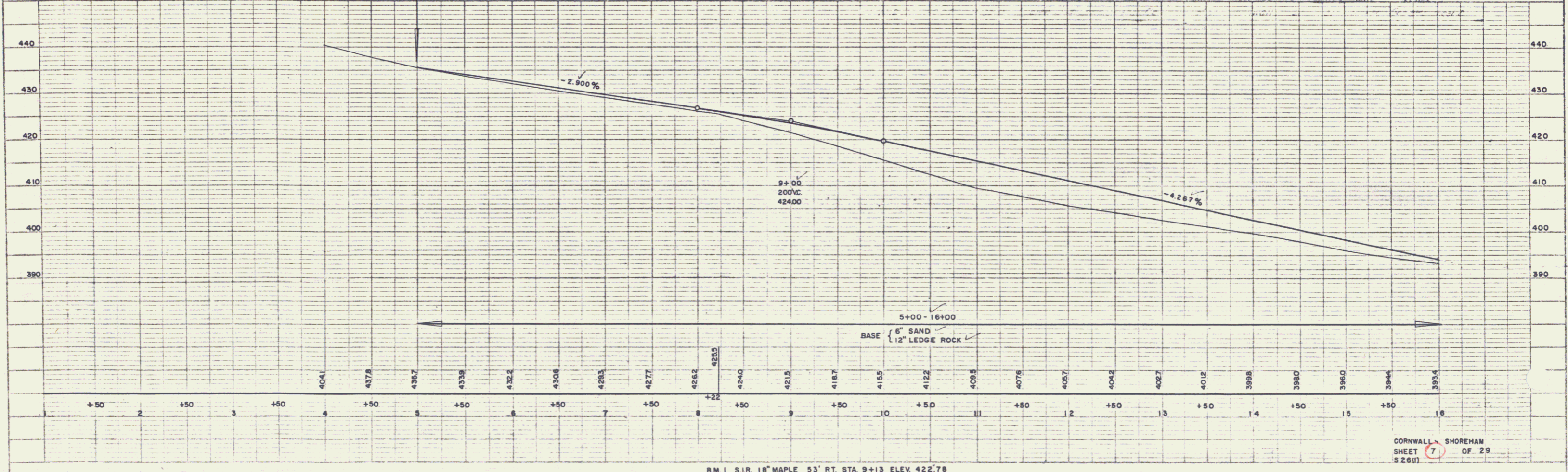
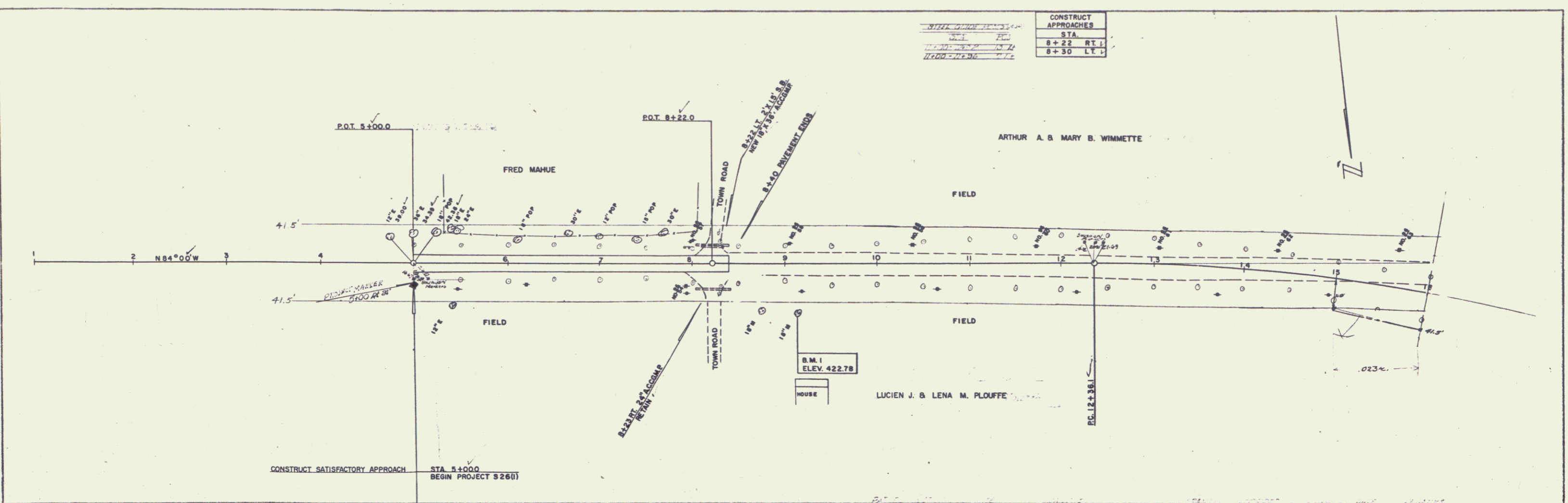
WEBSTER-MARTIN, INC. CONSULTING ENGINEERS,
30 BURLINGTON, VERMONT

3/9/2000 checked by J. Lewis

PLAN
 WESTER-MARTIN, INC.
 1001 W. 10th St.
 Des Moines, Iowa 50319

PROFILE
 WESTER-MARTIN, INC.
 1001 W. 10th St.
 Des Moines, Iowa 50319

CONSTRUCT APPROACHES	
STA.	RT. / LT.
8+22	RT.
8+30	LT.

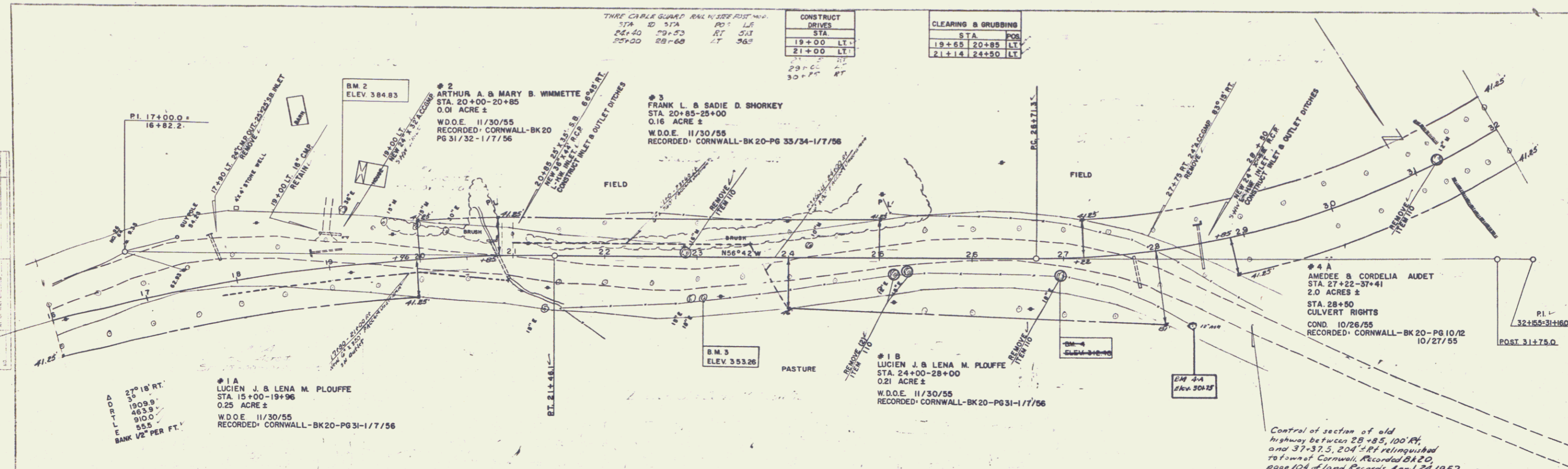


B.M. 1 S.I.R. 18" MAPLE 53' RT. STA. 9+13 ELEV. 422.78

2

WESTER-MARTIN, INC.
 ENGINEERS
 100 N. STATE ST.
 CORNWALL, N.H.

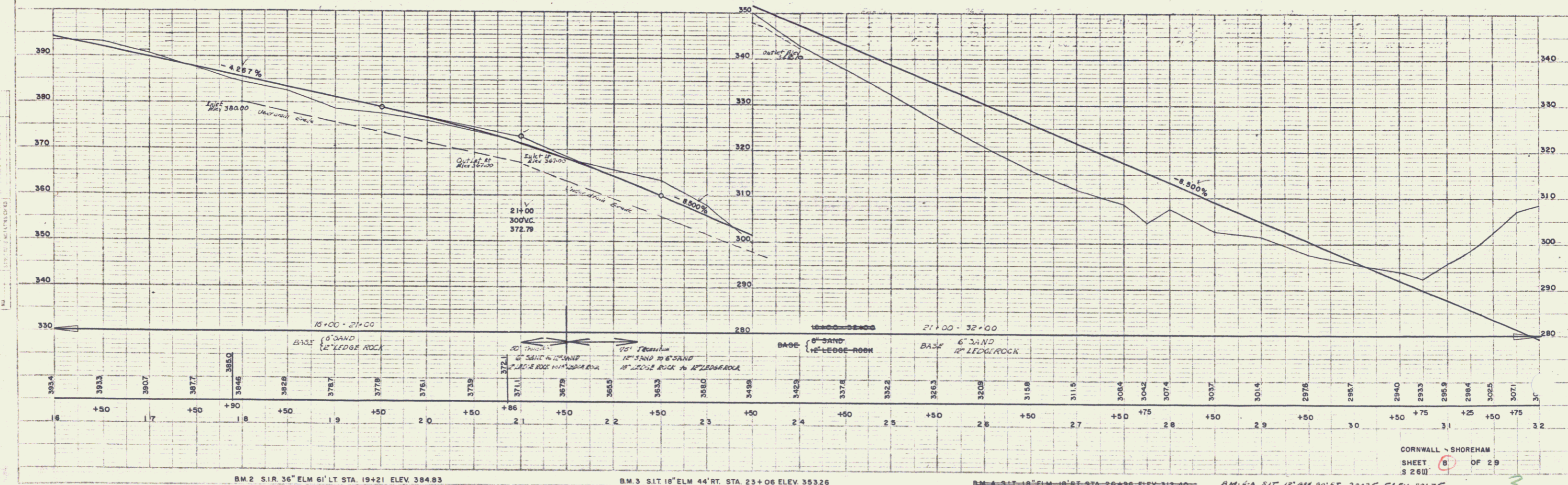
WESTER-MARTIN, INC.
 ENGINEERS
 100 N. STATE ST.
 CORNWALL, N.H.



THREE CABLE GUARD RAIL W/ SIDE RISE			
STA	ID	PO	LR
24+40	79+53	RT	511
25+20	28+60	LT	963

CONSTRUCT DRIVES	
STA	RT
19+00	LT
21+00	LT

CLEARING & GRUBBING	
STA	POS
19+55	20+85 LT
21+14	24+50 LT



Control of section of old highway between 28+85, 100' RT, and 37+37.5, 204' RT relinquished to town of Cornwall, Recorded BK 20, page 104 of Land Records, April 24, 1967.

BM 2 S.I.R. 36" ELM 6' LT STA. 19+21 ELEV. 384.83
 BM 3 S.I.T. 18" ELM 44' RT STA. 23+06 ELEV. 353.26
 BM 4 S.I.T. 18" ELM 10' RT STA. 26+96 ELEV. 312.10
 BM 4-A S.I.T. 18" AM 00' RT. 23+26 ELEV. 304.25

CORNWALL - SHOREHAM
 SHEET 6 OF 29
 S 260

THRESHOLD GUARD RAIL W/STEEL POSTS (NO.2)		SIZE GUARD RAIL	
STA	TO STA	POS	LT
39+00	37+01	35	35
34+00	37+15	303	
39+75	39+37	112	
40+55	41+33	128	
46+05	51+33	1030	

CLEARING & GRUBBING	
STA	POS
32+00	33+65
47+75	48+00

CONSTRUCT APPROACH	
STA	RT
41+50	RT

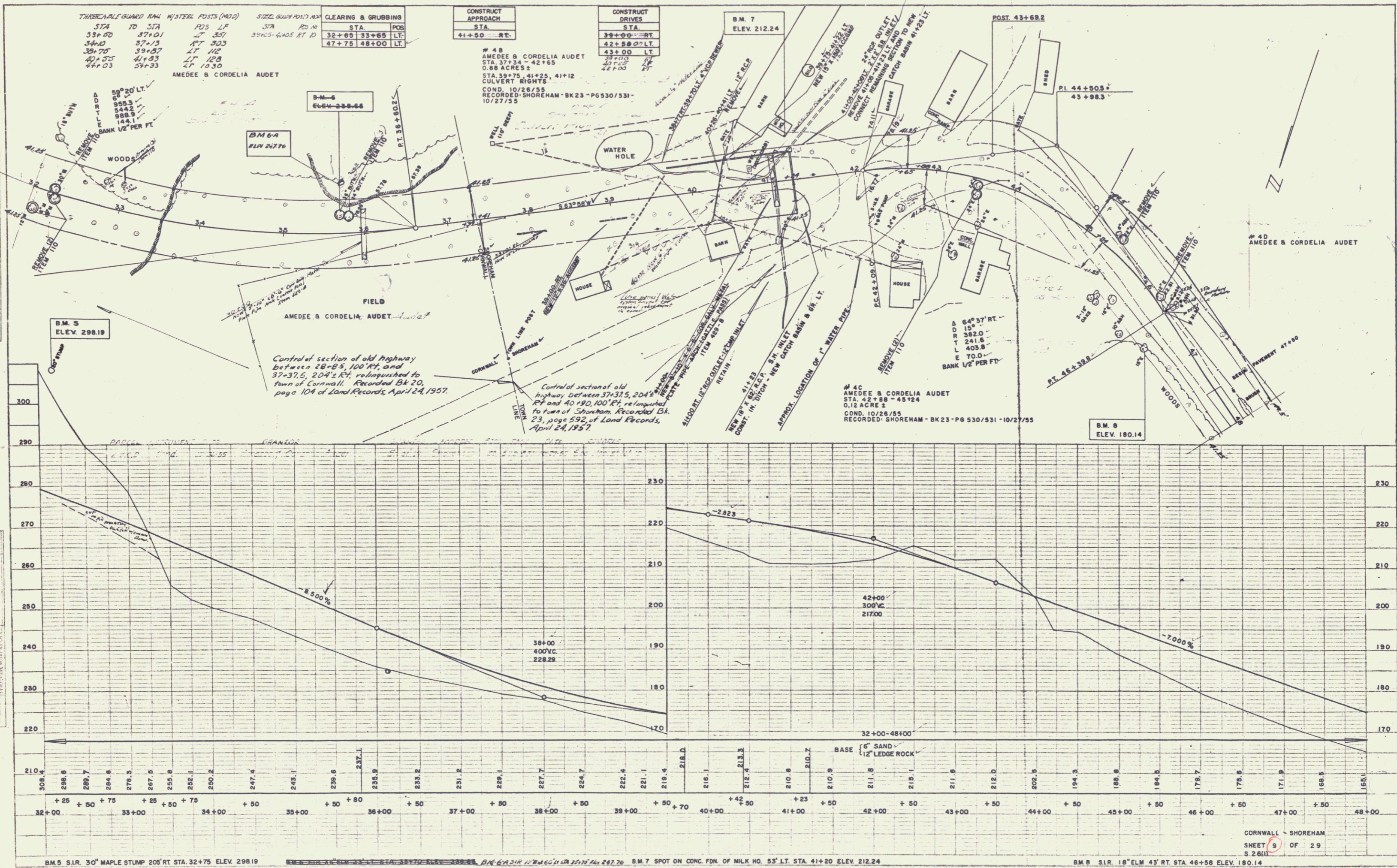
CONSTRUCT DRIVES	
STA	POS
39+00	RT
42+00	LT
43+00	LT
44+00	LT
45+00	LT
46+00	LT

4B
AMEDEE & CORDELIA AUDET
STA. 37+34 - 42+65
0.88 ACRES
STA. 39+75, 41+25, 41+12
CULVERT RIGHTS
COND. 10/26/55
RECORDED SHOREHAM - BK 23 - PG 530/531 - 10/27/55

4C
AMEDEE & CORDELIA AUDET
STA. 42+88 - 45+24
0.12 ACRES
COND. 10/26/55
RECORDED SHOREHAM - BK 23 - PG 530/531 - 10/27/55

PLAN
DRAWN BY
WEBSTER-MARTIN, INC.
CHECKED BY
NOTE BOOK ADJUSTMENT CHECKED
DATE OF FIELD CHECK

PROFILE
DRAWN BY
WEBSTER-MARTIN, INC.
CHECKED BY
NOTE BOOK ADJUSTMENT CHECKED
DATE OF FIELD CHECK



THREE CABLE GUARD RAIL W/STEEL POSTS (NO.2)

STA TO	STA	POS	LT
44+03	54+33	RT	1000
44+03	54+33	RT	3000
45+03	54+11	RT	110

CLEARING & GRUBBING	
STA	POS
48+00	48+10 LT

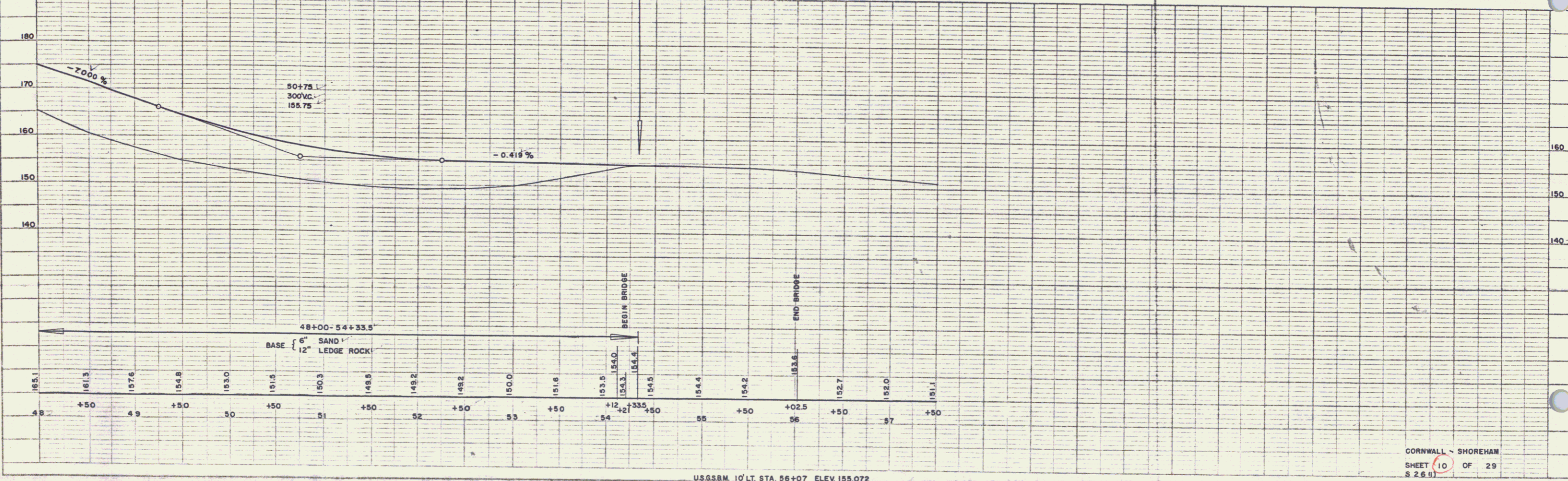
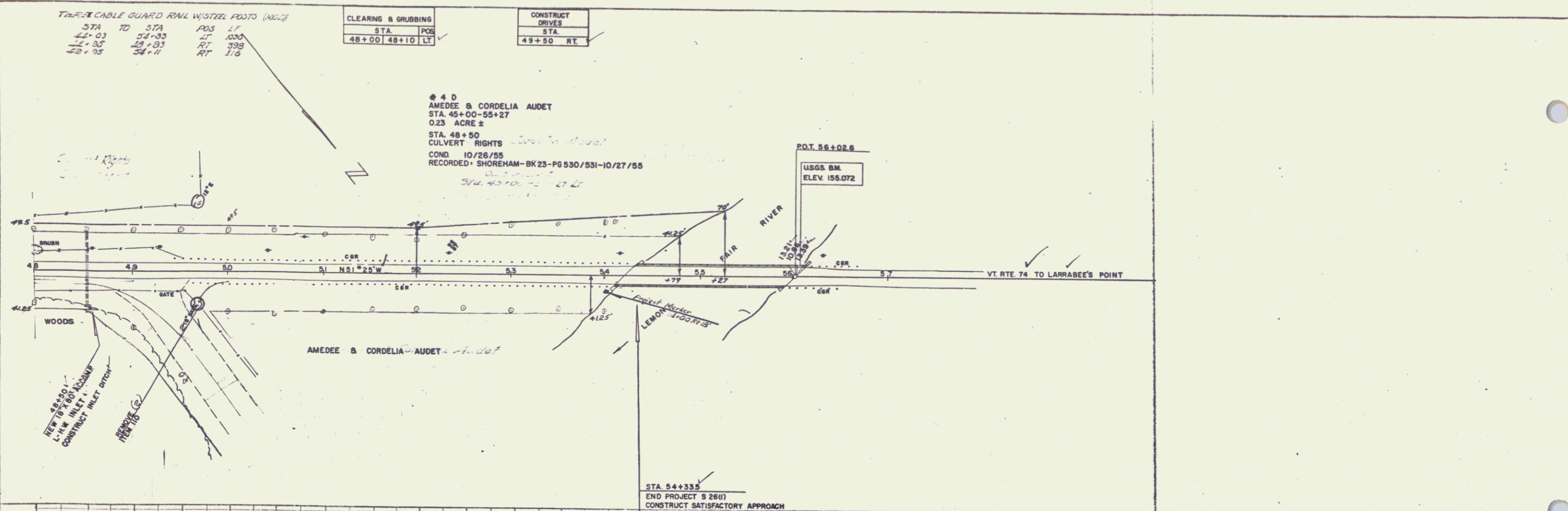
CONSTRUCT DRIVES	
STA	POS
49+50	RT

4 D
 AMEDEE & CORDELIA AUDET
 STA. 45+00-55+27
 0.23 ACRE ±
 STA. 48+50
 CULVERT RIGHTS
 COND. 10/26/55
 RECORDED SHOREHAM-BK 25-PG 530/531-10/27/55
 514.45+00 = 27.2

P.O.T. 56+02.6
 USGS BM
 ELEV. 155.072

PLAN
 WESTERN-MARTIN, INC.
 1000 WESTERN AVENUE
 WASHINGTON, D.C. 20004
 10/26/55

PROFILE
 WESTERN-MARTIN, INC.
 1000 WESTERN AVENUE
 WASHINGTON, D.C. 20004
 10/26/55



USGS BM 10' LT. STA. 56+07 ELEV. 155.072

5