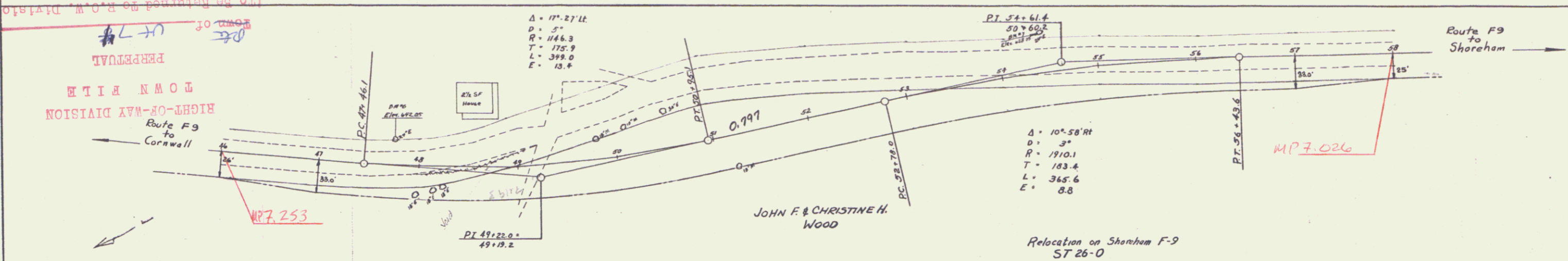
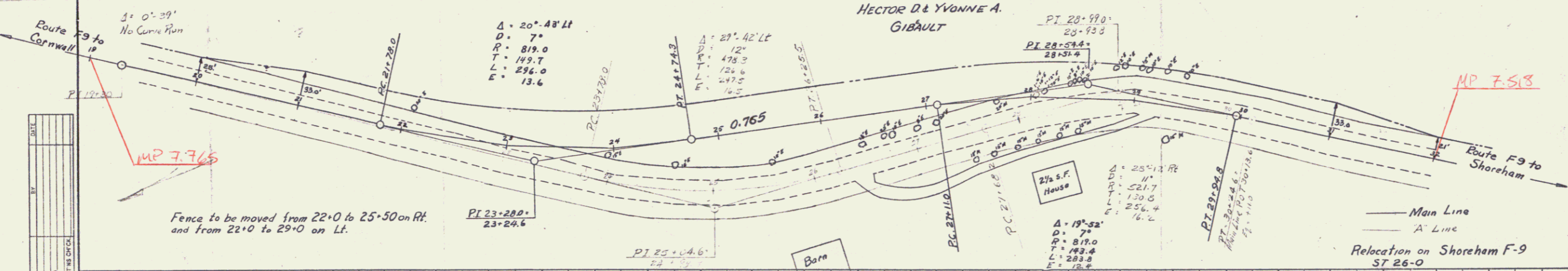


PERPETUAL  
RIGHT-OF-WAY DIVISION  
TOWN FILE  
FORM OF  
VT 74

DATE	
BY	
SCALE	
PROFILER	
NOTED	
NOTED	
NO.	
STRUCTURE NOTED	
NO.	



DATE	
BY	
SCALE	
PROFILER	
NOTED	
NOTED	
NO.	
STRUCTURE NOTED	
NO.	



TOWN OF SHOREHAM  
Project ST 26-0  
Pin # 00R425  
Route VT 74  
Date 1/1/1954

Fence to be moved from 22+0 to 25+50 on Rt.  
and from 22+0 to 29+0 on Lt.

Relocation on Shoreham F-9  
ST 26-0