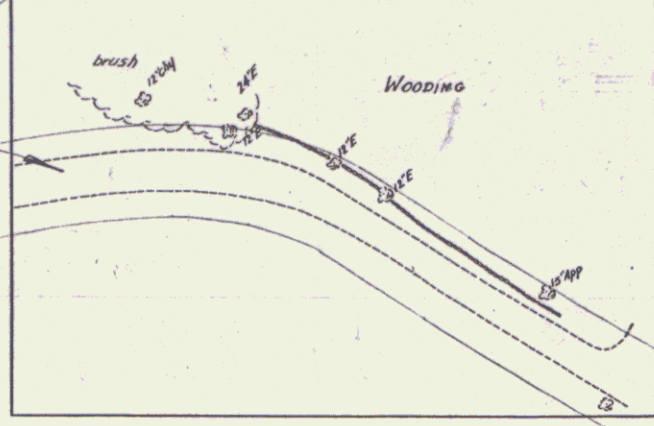


Construct Drive		Wood Guide Post		TWO CABLE GUARD RAIL		Plank Guard Rail	
Sta	LT RT	LT RT	LT RT	LT RT	LT RT	LT RT	LT RT
219+00		237+50	239+42	227+00	229+00	227+00	229+00
235+90	LT			228+48	229+87	229+34	229+87
236+70	RT			230+70	231+10	230+70	231+10

⊙ Indicates "Cutting and Removing Trees," Item 110

NOTE: Sta 234+00± - 240+00± LT
The present road is to be covered with topsoil to a depth of six (6) inches, from stockpiled topsoil, obtained between sta 234+00± - 249+00±.

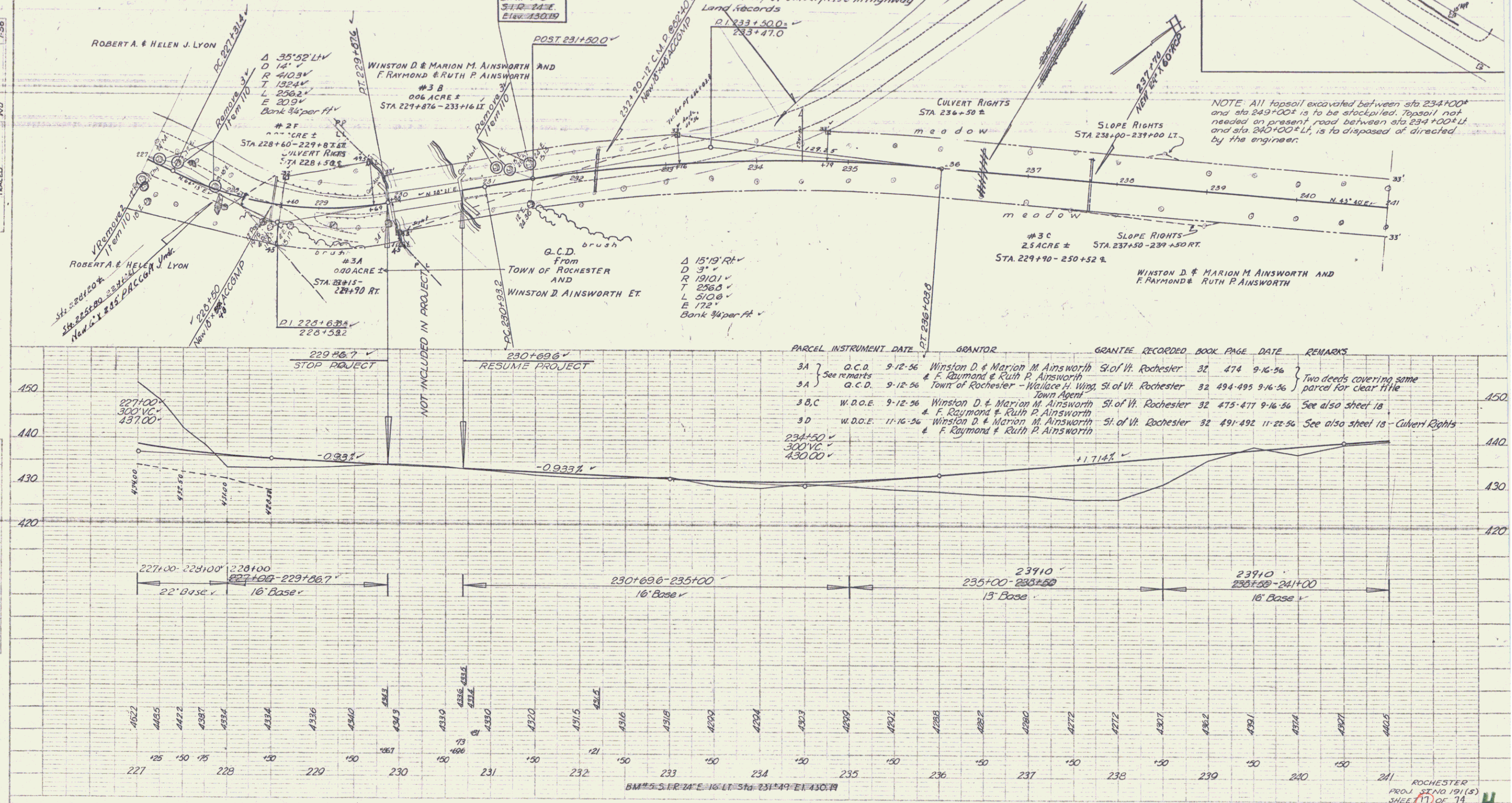
Control of section of old highway between stations 234+50 LT - Station 247+50 LT relinquished to Town of Rochester. Recorded book & page are data 29 day of January 1953 in Highway Land Records.



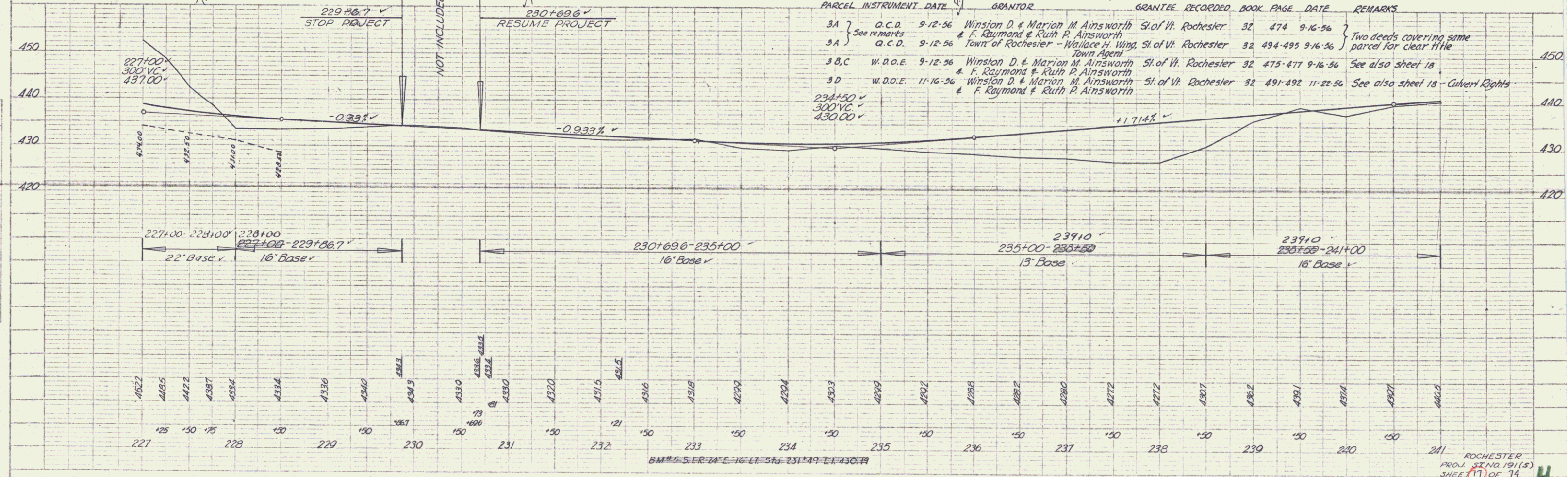
NOTE: All topsoil excavated between sta 234+00± and sta 249+00± is to be stockpiled. Topsoil not needed on present road between sta 234+00± LT and sta 240+00± LT, is to be disposed of directed by the engineer.

PLAN	SCALE	1" = 50'
DATE	7-56	
BY	WJ	
CHECKED		
APPROVED		

PROFILE	SCALE	1" = 10'
DATE	7-56	
BY	WJ	
CHECKED		
APPROVED		



PARCEL	INSTRUMENT DATE	GRANTOR	GRANTEE	RECORDED BOOK	PAGE	DATE	REMARKS
3A	9-12-56	Winston D. & Marion M. Ainsworth & F. Raymond & Ruth P. Ainsworth	St. of Vt. Rochester	32	474	9-16-56	Two deeds covering same parcel for clear title
3A	9-12-56	Town of Rochester - Wallace H. Wing, St. of Vt. Rochester	St. of Vt. Rochester	32	494-495	9-16-56	
3B,C	9-12-56	Winston D. & Marion M. Ainsworth & F. Raymond & Ruth P. Ainsworth	St. of Vt. Rochester	32	475-477	9-16-56	See also sheet 18
3D	11-16-56	Winston D. & Marion M. Ainsworth & F. Raymond & Ruth P. Ainsworth	St. of Vt. Rochester	32	491-492	11-22-56	See also sheet 18 - Culvert Rights



BM 5 S. R. 74 E. 16 LT Sta 231+49.1 E. 430.7