

ALMON R. KING, et al
 # 1 A
 0.40 Acre ±
 Sta. 8+00 - 13+75 Lt.
 Rev.
 Δ 13° 48' Lt. 16° 40'
 D 5° 3'
 R 1146.3 1910.1
 T 138.7 279.8
 L 276.0 555.6
 E 8.4 20.38

Note: Drainage rights shared by adjoining property owners.

P.I. 15+21.8
 15+15.7
 REAL T. & RUTH GENDRON
 # 2 A
 0.45 Acre ±
 Sta. 13+75 - 20+00 Lt.

Δ 26° 12' Rt. 96° 05' Pl.
 D 8° 6'
 R 716.8
 T 166.8
 L 327.5
 E 19.2
 GREEN MOUNTAIN NATIONAL FOREST

Δ 1° 43' Rt
 D 2°
 R 2864.9
 T 42.9
 L 85.8
 E 0.3

P.I. 9+00.0
 8+98.6
 ALMON R. KING, et al

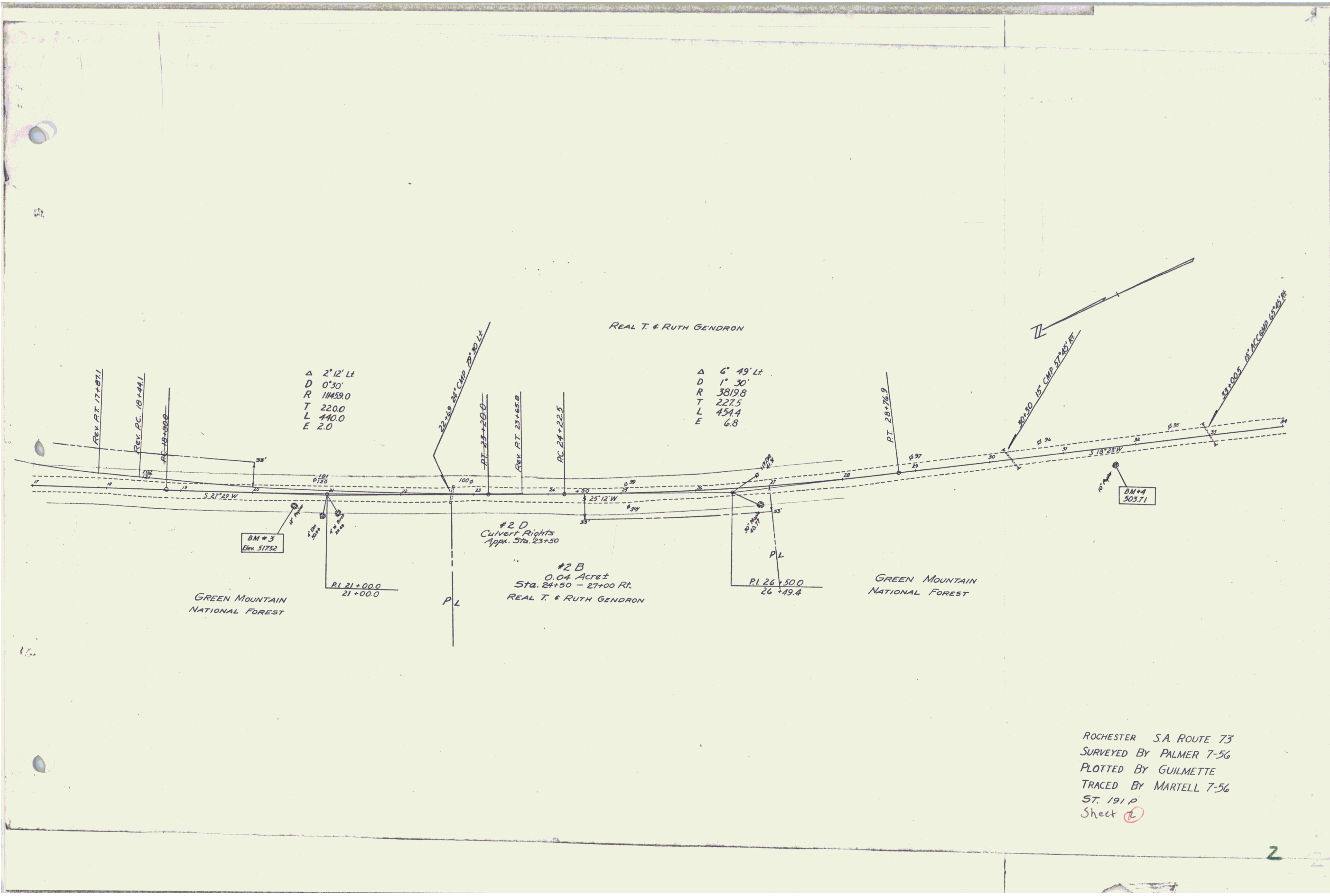
ROUTE: Vt 73
 PROJECT: ST 191 P
 Date: 1/1/1957
 P.I.: 00R 422
 TOWN: ROCHESTER

MP 4.920 - 6.428

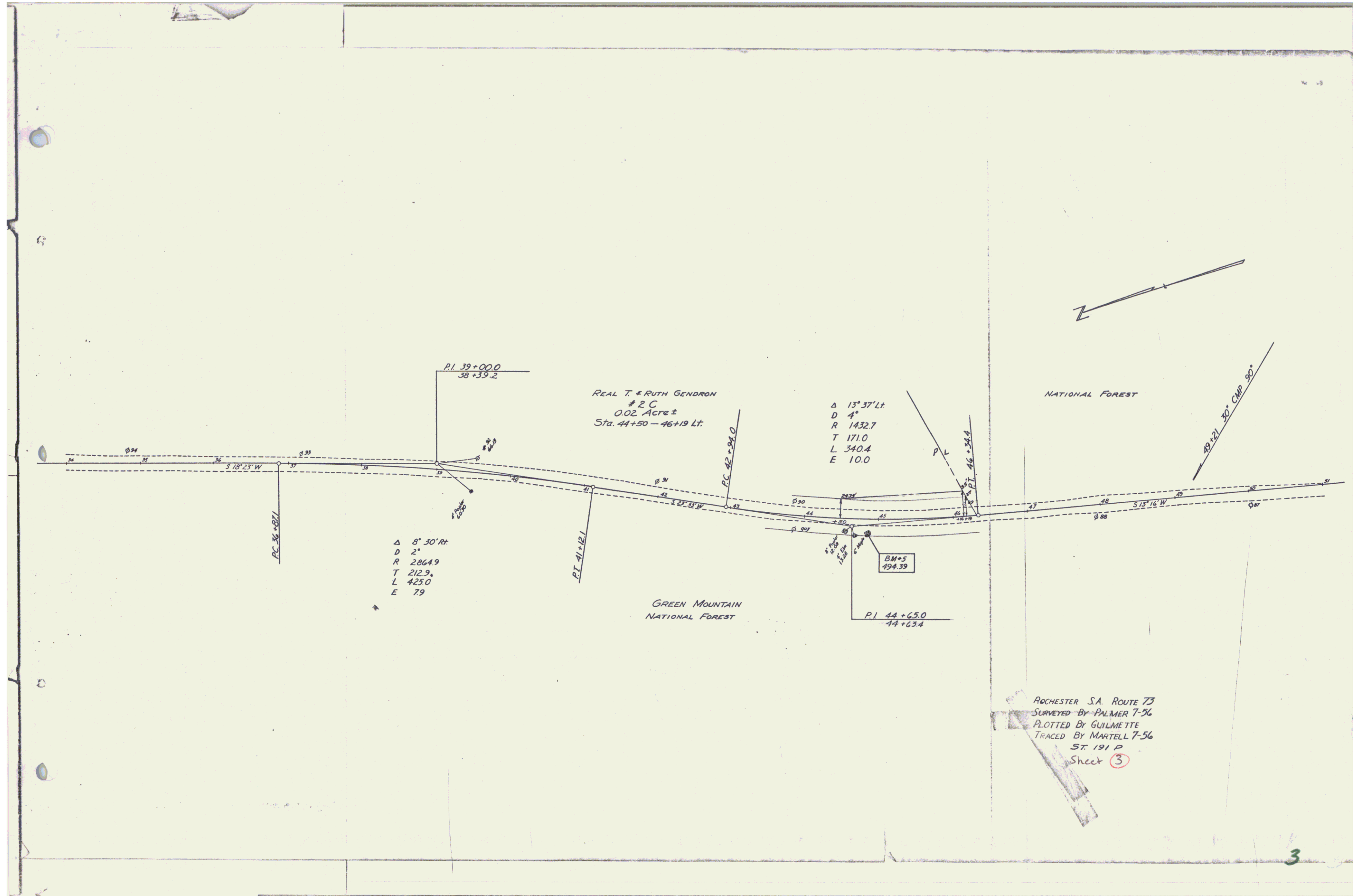
ROCHESTER S.A. ROUTE 73
 SURVEYED BY PALMER 7-56
 PLOTTED BY GUILMETTE
 TRACED BY MARTELL 7-56
 ST. 191 P
 Sheet 1

RIGHT-OF-WAY DIVISION
 TOWN FILE

PERPETUAL
 Town of Vt 73
 (To Be Returned To R.O.W. Division)



ROCHESTER S.A. ROUTE 73
 SURVEYED BY PALMER 7-56
 PLOTTED BY GUILMETTE
 TRACED BY MARTELL 7-56
 ST. 191 P
 Sheet ①



PI 39+00.0
38+39.2

REAL T. & RUTH GENDRON
#2 C
0.02 ACRES ±
Sta. 44+50 - 46+19 Lt.

Δ 13° 37' Lt
D 4'
R 1432.7
T 171.0
L 340.4
E 10.0

Δ 8° 30' Rt
D 2'
R 2864.9
T 212.9
L 425.0
E 7.9

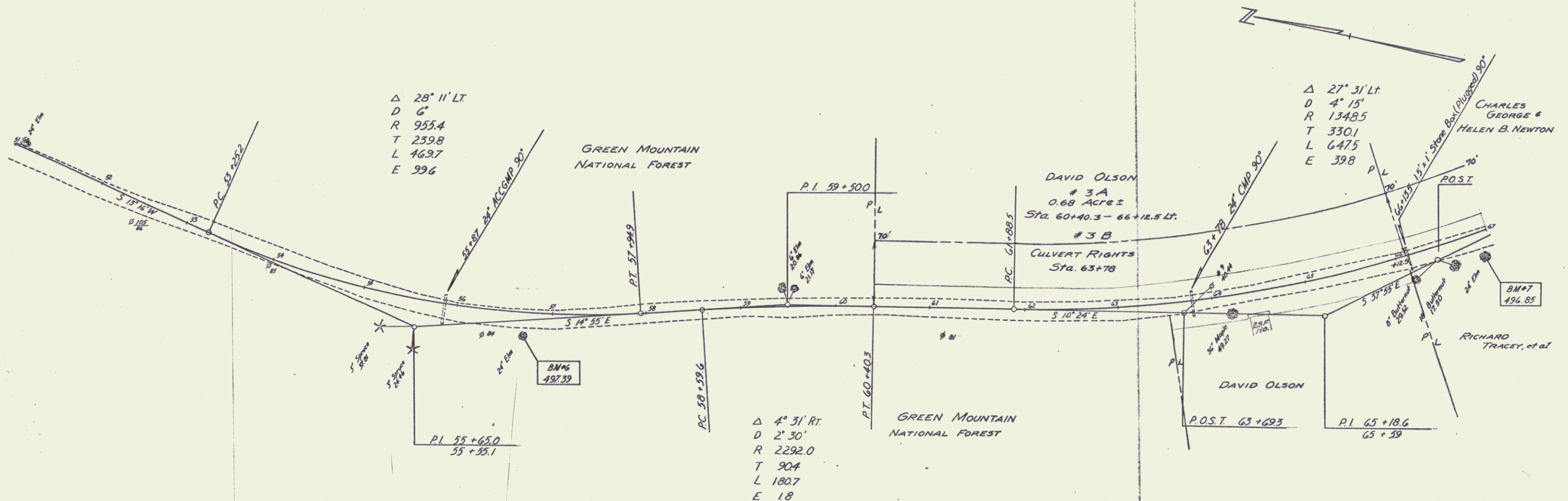
BM #5
494.39

PI 44+65.0
44+63.4

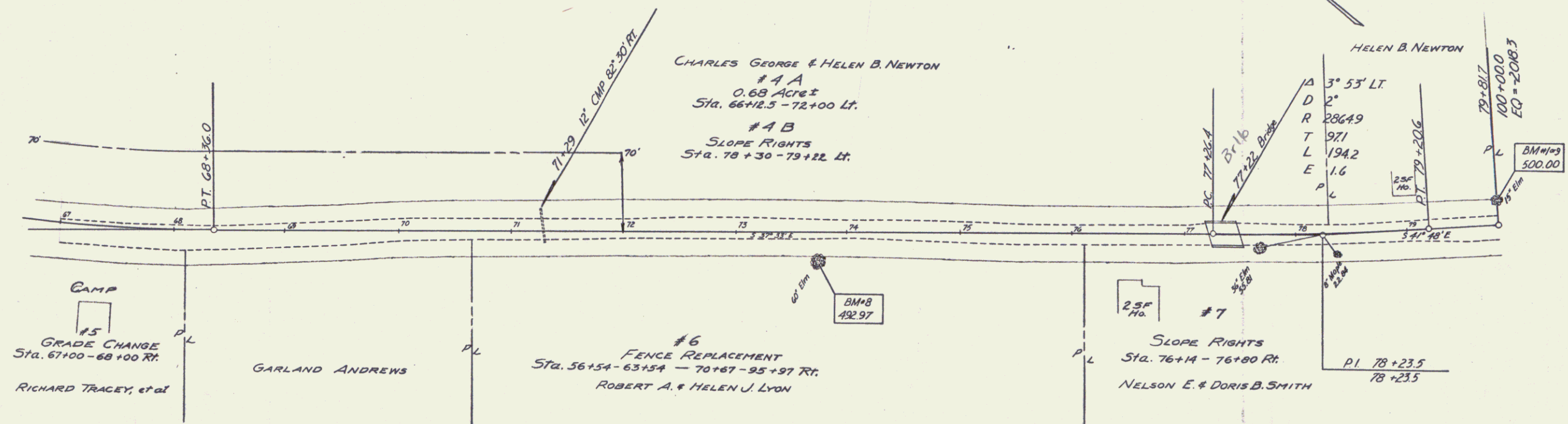
NATIONAL FOREST

GREEN MOUNTAIN
NATIONAL FOREST

ROCHESTER S.A. ROUTE 73
SURVEYED BY PALMER 7-56
PLOTTED BY GUILMETTE
TRACED BY MARTELL 7-56
ST. 191 P
Sheet 3



ROCHESTER S.A. ROUTE 73
 SURVEYED BY PALMER 7-56
 PLOTTED BY GUILMETTE
 TRACED BY MARTELL 7-56
 ST. 191 P
 Sheet 4



CHARLES GEORGE & HELEN B. NEWTON
 #4 A
 0.68 ACRES
 STA. 66+12.5 - 72+00 LT.
 #4 B
 SLOPE RIGHTS
 STA. 78+30 - 79+22 LT.

HELEN B. NEWTON
 3° 55' LT.
 D 2'
 R 2864.9
 T 971
 L 194.2
 E 1.6
 P L
 25' Ho.
 79+81.7
 100+00.0
 EQ = 208.3
 BM#103
 500.00

#6
 FENCE REPLACEMENT
 STA. 56+54 - 63+54 - 70+67 - 95+97 RT.
 ROBERT A. & HELEN J. LYON

#7
 SLOPE RIGHTS
 STA. 76+14 - 76+80 RT.
 NELSON E. & DORIS B. SMITH
 P L
 P I 78+23.5
 78+23.5

CAMP
 #15
 GRADE CHANGE
 STA. 67+00 - 68+00 RT.
 RICHARD TRACEY, et al

GARLAND ANDREWS

ROCHESTER SA ROUTE 73
 SURVEYED BY PALMER 7-56
 PLOTTED BY GUILMETTE
 TRACED BY MARTELL 7-56
 ST. 191 P
 Sheet 5