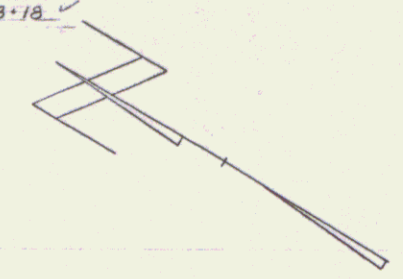


E GUARD RAIL 538100-543186 ✓
 UNCLASSIFIED CHANNEL ECAVATION 538190-541186
 STONE FILL FOR SLOPE PROTECTION 538100-541186
 CONSTRUCT APPROACH 5421643 ✓
 CONSTRUCT DRIVE 541182 ✓

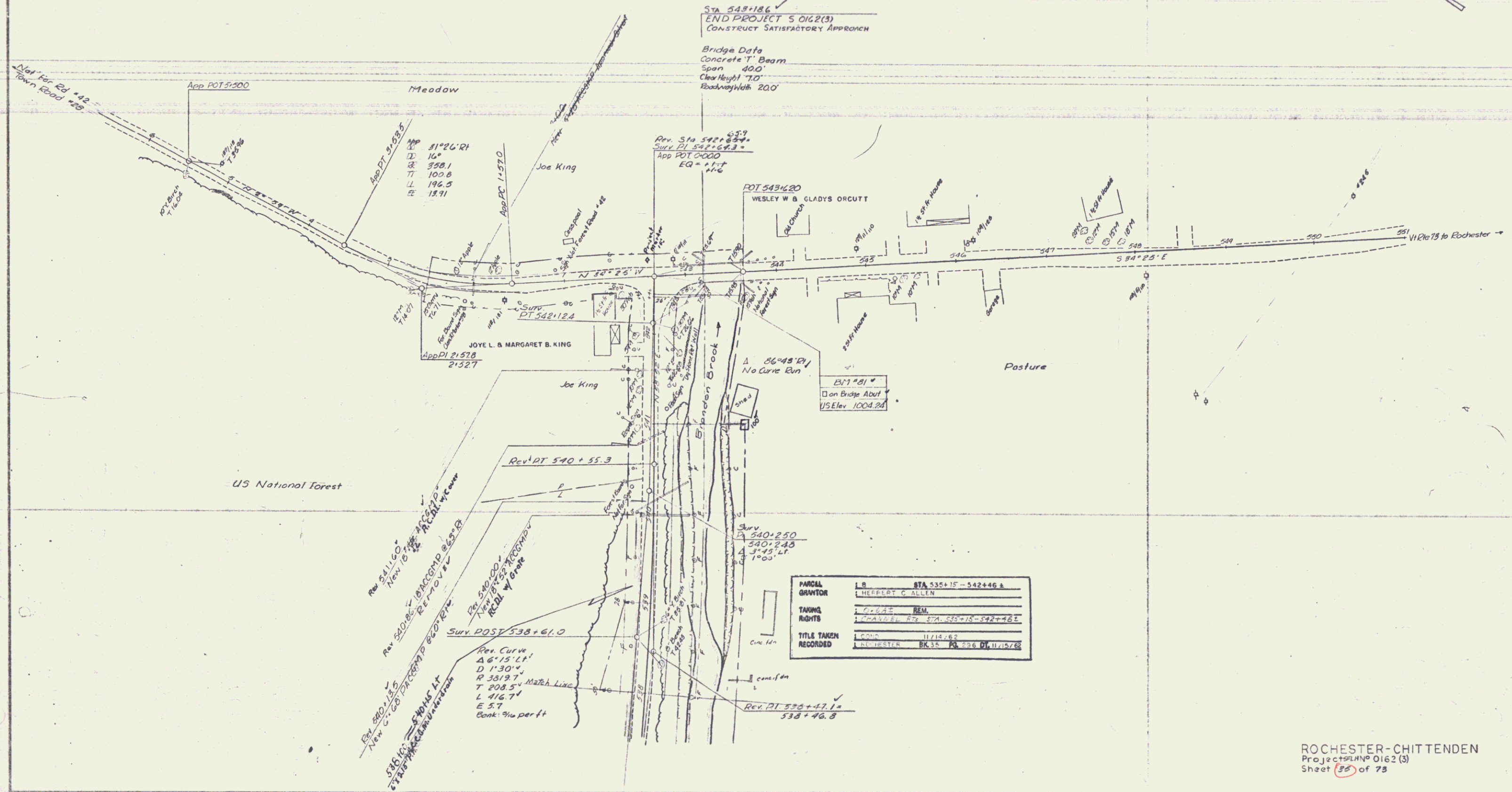
REMOVAL AND DISPOSAL OF PRESENT GUARD RAIL
 LT 542-88-543-18 ✓
 RT 542-3A-543-18 ✓

RUBBLE MASONRY RETAINING WALL
 50-540100 ✓



Sta 543+186 ✓
 END PROJECT S 0162(3)
 CONSTRUCT SATISFACTORY APPROACH

Bridge Data
 Concrete T-Beam
 Span 400'
 Clear Height 7.0'
 Roadway Width 200'



MP 81°26'21"
 D 10°
 RE 358.1
 TL 100.8
 LL 196.5
 EE 13.91

Rev. Sta 542+65.9
 Surv. PI 542+64.3
 App. POT 0+000
 EQ = 11.7
 EG = 21.6

POT 543+620
 WESLEY W & GLADYS ORCUTT

JOYE L. & MARGARET B. KING
 App. DI 21578
 21527

BT 1' 01" ✓
 On Bridge Abut
 VSElev 1004.34

Rev. PI 540+55.3

Surv. P 540+250
 540+240
 Δ 3'-45" LT
 150'

PARCEL OWNER	L.R. STA 535+15 - 542+46 s
TAKING RIGHTS	HERBERT C. ALLEN
TITLE TAKEN RECORDED	17 MAR 1962 BY STA 535+15 - 542+46 s
	11/14/62
	ROCHESTER BK 35 PG 296 DT 11/19/62

Rev. 51110' ✓
 New to the ACAD. system
 Rev. 530186' BRACOMD 665.9
 RECAL. by Brook
 Rev. 530186' BRACOMD 660.0
 New to the ACAD. system
 Rev. 530186' BRACOMD 660.0
 New to the ACAD. system

Rev. CURVE
 Δ 6°15' LT
 D 1'30"
 R 3819.7'
 T 208.5' MARK LINE
 L 416.7'
 E 5.7'
 Bank 9/16 per ft

Rev. PI 535+47.1 ✓
 538+46.8

ROCHESTER-CHITTENDEN
 Project PLAN# 0162(3)
 Sheet 35 of 75