

INDEX OF SHEETS	
SHEET NO	TITLE
1	TITLE SHEET
2	TYPICAL CROSS-SECTION OF IMPROVEMENT (BITUMINOUS CONCRETE PAVEMENT, ITEM 36-BUMOD)
3	QUANTITY SHEET (ITEMS)
4	QUANTITY SHEET (GRAINAGE)
5-6	EARTHWORK SHEETS
9-23	PLAN AND PROFILE SHEETS
21	STANDARD SHEET SB-PA#1 (DETAILS OF 4'-6" X 11" C&M.R.P.A. AT STA. 306+23.5, DETAIL 'B')
22	STANDARD SHEET SB-PA#2 (DETAILS OF 120' C&M.R.P. AT STA. 306+23.5, DETAIL 'B')
23	STANDARD SHEET SB-PP#1 (DETAILS OF 120' C&M.R.P. AT STA. 306+23.5, DETAIL 'C')
24	STANDARD SHEET SB-PP#2 (DETAILS OF 120' C&M.R.P. AT STA. 306+23.5, DETAIL 'D')
25	STANDARD SHEET B-1 (WORKING TABLES)
26	STANDARD SHEET B-5 (SLOPE STABILIZATION)
27	STANDARD SHEET B-11 (SLOPE STABILIZATION)
28	STANDARD SHEET C-1 (TREATED TIMBER CURB)
29	STANDARD SHEET D-1 (PRECAST H.C.P. DROP INLETS)
30	STANDARD SHEET D-2 (HEADWALLS & UNDERDRAINS)
31	STANDARD SHEET E-1 (BARBICADES, SIGNS & LIGHTS)
32	STANDARD SHEET G-2 (TWO CABLE GUARD RAIL)
33	STANDARD SHEET G-4 (WIDE POSTS & MARKER POSTS)
34	STANDARD SHEET J-1 (MARKERS)
35-57	CROSS-SECTION SHEETS
58-59	CURVE BANKING TRANSITION SHEETS

PROJECT	NUMBER
Goshen-Rochester	S-FLH 0162 (1)
TYPE	SURFACE AREA
Bituminous Concrete	37,526 sy

RECORD PLANS MATERIALS	
GRAVEL - Lyon and Severy Pits, Rochester, Vermont	
CUTBACK ASPHALT - Mobile Oil Co., East Providence, Rhode Island	
BITUMINOUS CONCRETE - L.M. Dike & Son, Inc., Proctor, Vermont Plant	
REINFORCING CONCRETE - American Marietta Co., Windsor, Vermont	
ACCG. METAL PIPE and CG METAL PLATE PIPE - New England Metal Culvert Co., Palmer, Mass. and Arma Steel Corp., Middletown, Ohio	
CONCRETE, CLASS B - Joseph P. Carrara & Sons, Inc., Rutland, Vermont	
REINFORCING STEEL - Bethlehem Steel Co., Bethlehem, Pa.	
GUARD RAIL - Bethlehem Steel Co., Sparrows Point, Maryland	
WOOD POSTS - Koppers, Nashua, N.H. and Stoddard Enterprises, Inc., Northfield, Vermont	
TIMBER CURB - Koppers, Nashua, New Hampshire	
CONTRACTOR - Burnett and Campbell, Inc., P.D.P., Burlington, Vermont	
RESIDENT ENGINEER - William B. Lowe	
INSPECTORS - Sherwood C. Murray, R. Guthridge	
RECORD PLANS - S. C. Murray, W. B. Lowe	
CONTRACT DATED - Nov. 9, 1960	
CONTRACT STARTED - Nov. 15, 1960	
CONTRACT COMPLETED - Aug. 9, 1962	
CONTRACT ACCEPTED - Aug. 9, 1962	

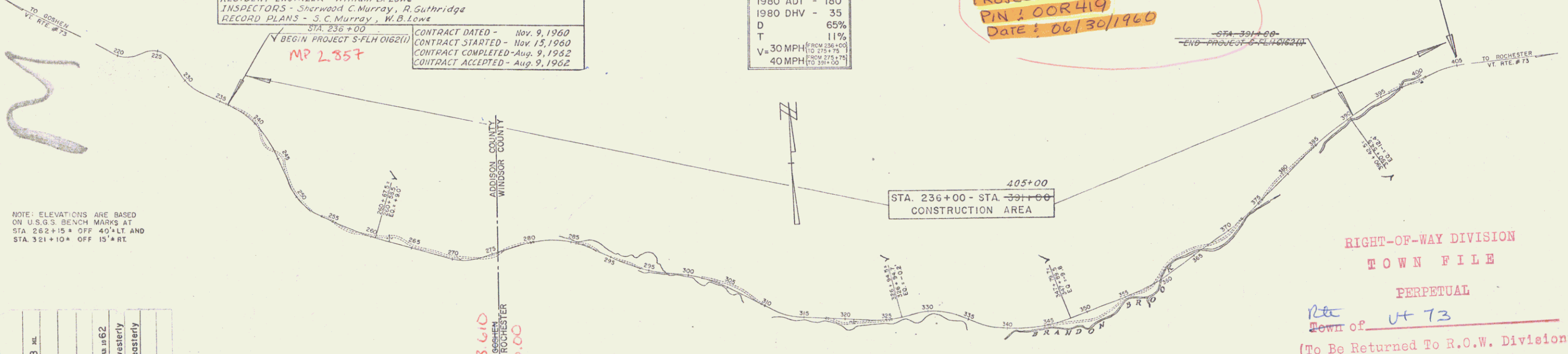
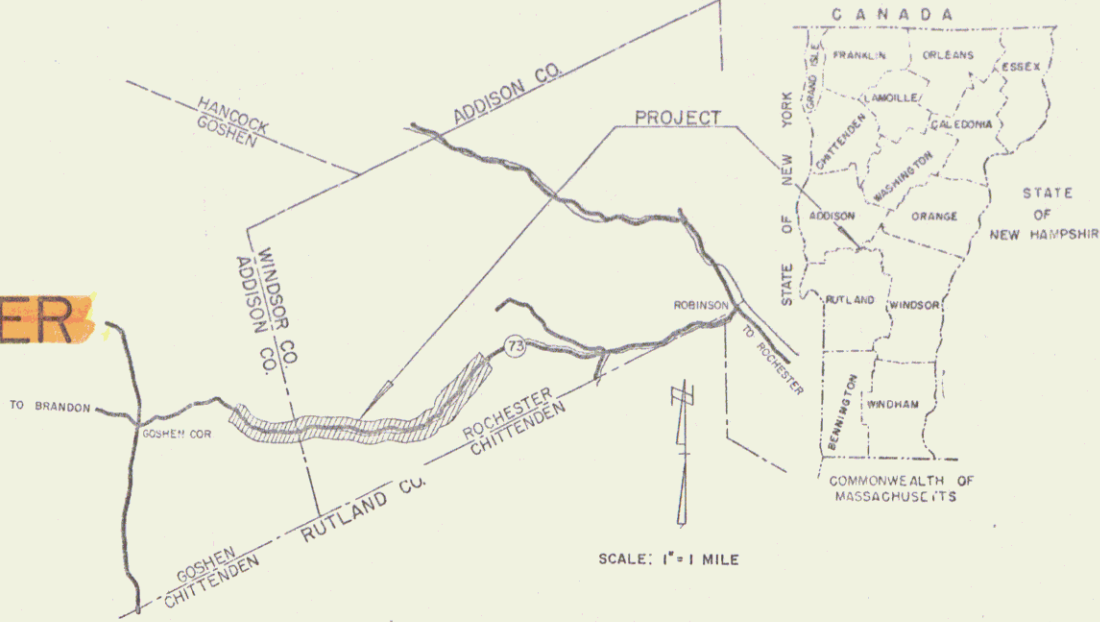
STATE OF VERMONT
DEPARTMENT OF HIGHWAYS
PROPOSED IMPROVEMENT
FEDERAL AID SECONDARY PROJECT

TOWNS OF GOSHEN & ROCHESTER
COUNTIES OF ADDISON & WINDSOR
VERMONT ROUTE #73
BRANDON - ROCHESTER ROAD

BEGINNING AT A POINT APPROXIMATELY 0.75 MILE WESTERLY OF THE GOSHEN - ROCHESTER TOWN LINE AND EXTENDING EASTERLY 2.933 MILES - 3.198 MILES.
LENGTH OF PROJECT 16,886.6 FEET - 3.198 MILES

1958 ADT - 125
1980 ADT - 180
1980 DHV - 35
D - 65%
T - 11%
V - 30 MPH (FROM STA. 236+00 TO STA. 311+00)
40 MPH (FROM STA. 311+00 TO STA. 405+00)

PROJECT: S-FLH 0162 (1)
PIN: 00R419
DATE: 06/30/1960



NOTE: ELEVATIONS ARE BASED ON U.S.G.S. BEVM MARKS AT STA. 262+15 OFF 40' LT. AND STA. 321+10 OFF 15' RT.

RIGHT-OF-WAY DIVISION
TOWN FILE
PERPETUAL
Town of U 73
(To Be Returned To R.O.W. Division)

COUNTY	GOSHEN-ROCHESTER
TOWN	S-FLH 0162 (1)
FENCE	BITUMINOUS CONCRETE
STONE	
UNFINED	
GUARD	
TRAVEL	
RAILROAD	
RETAIN	
CENTER	
SURVEY	
CULVER	
DROP	
TROUBLE	
POWER	
TELEPH	
TREES	
MEDIE	

CURVE DATA	
DEFLECTION OF ANGLE A
DEGREE OF CURVE R
RADIUS OF CURVE T
TANGENT DISTANCE L
LENGTH OF CURVE E
EXTERNAL DISTANCE P1
POINT OF INTERSECTION P2
POINT OF CURVE P3
POINT OF TANGENT P4
POINT ON TANGENT POT
POINT ON SUB-TANGENT POST

SCALES	
TITLE	1" = 600'
TYPICAL	1" = 2'
PLAN	1" = 50'
PROFILE	1" = 10'
CROSS-SECTIONS	1" = 10'

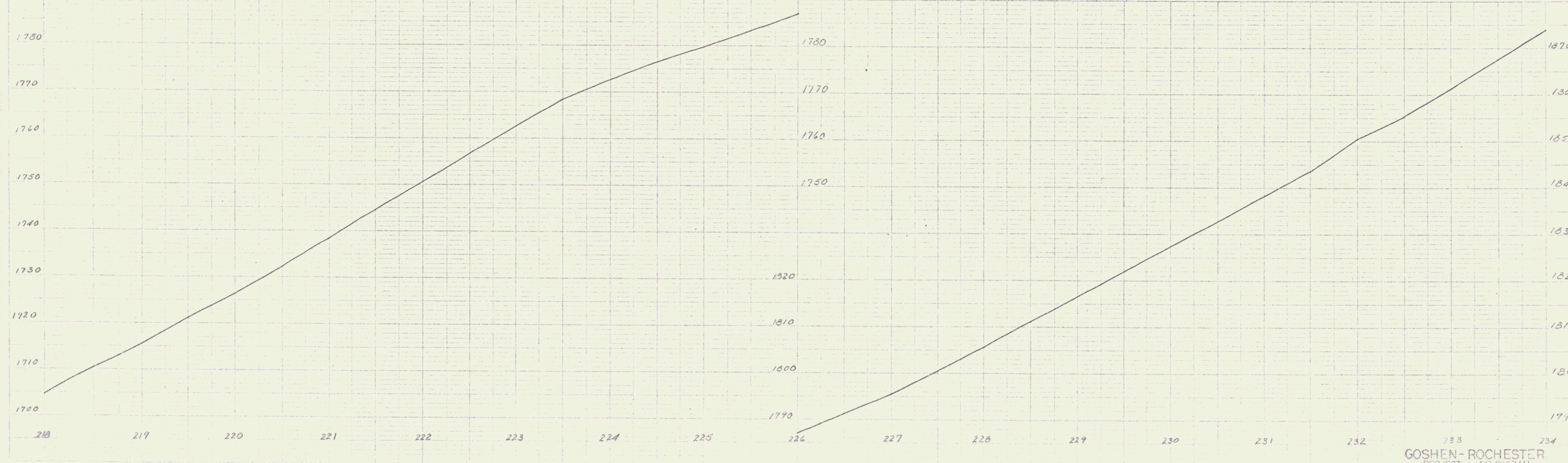
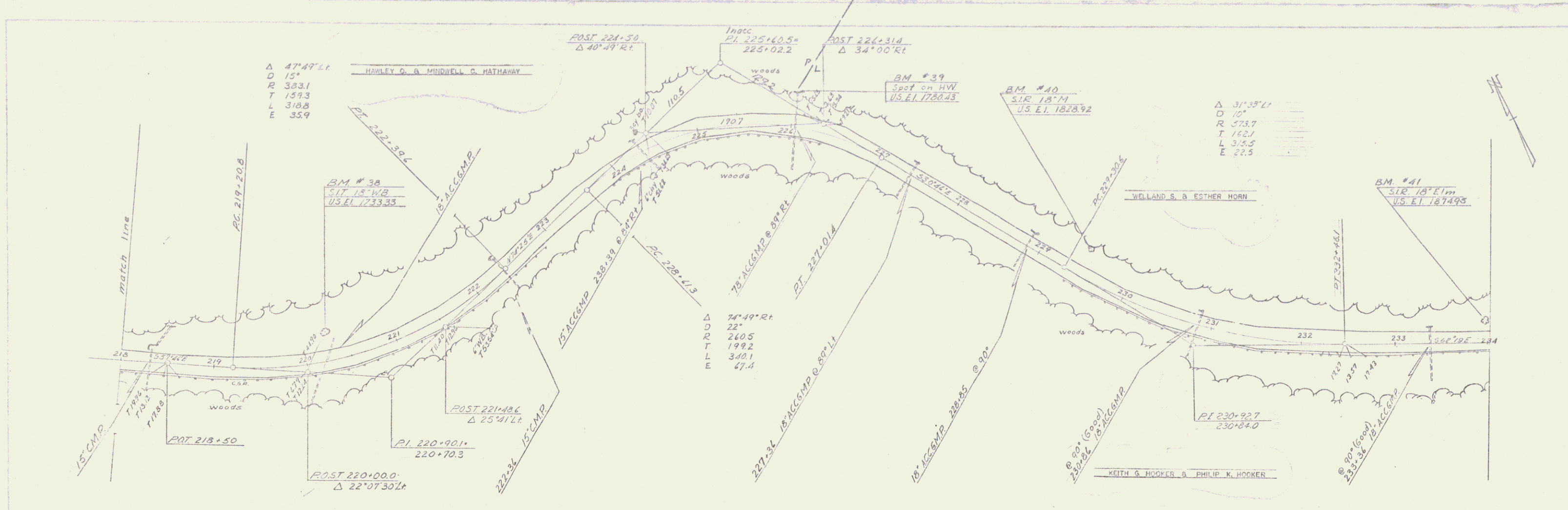
APPROVED: <i>[Signature]</i> DATE: June 3, 1960	APPROVED: <i>[Signature]</i> DATE: June 3, 1960	APPROVED: <i>[Signature]</i> DATE: June 3, 1960	APPROVED: <i>[Signature]</i> DATE: June 3, 1960	APPROVED: <i>[Signature]</i> DATE: June 3, 1960
--	--	--	--	--

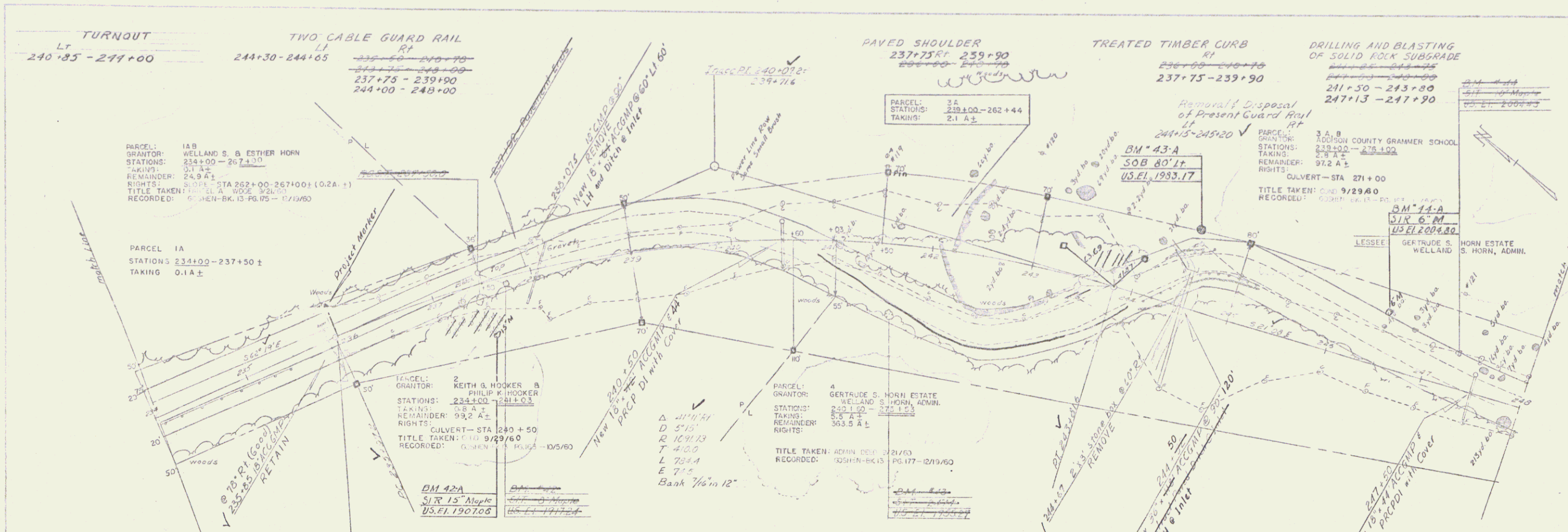
NOTE: ANY FURTHER INFORMATION CONCERNING FINAL QUANTITIES, AMOUNTS OF OTHER DETAILS RELATIVE TO THIS PROJECT MAY BE FOUND IN EITHER THE FIELD BOOKS OR THE ESTIMATE FILE.

DEPARTMENT OF COMMERCE BUREAU OF PUBLIC ROADS	
APPROVED: <i>[Signature]</i>	DATE: <i>[Date]</i>
PROJECT S-FLH NO. 0162 (1)	
SHEET 1 OF 50 SHEETS	

Traced by
M. S. Williams
8/25
1959

Williams
M. S.
8/25
1959



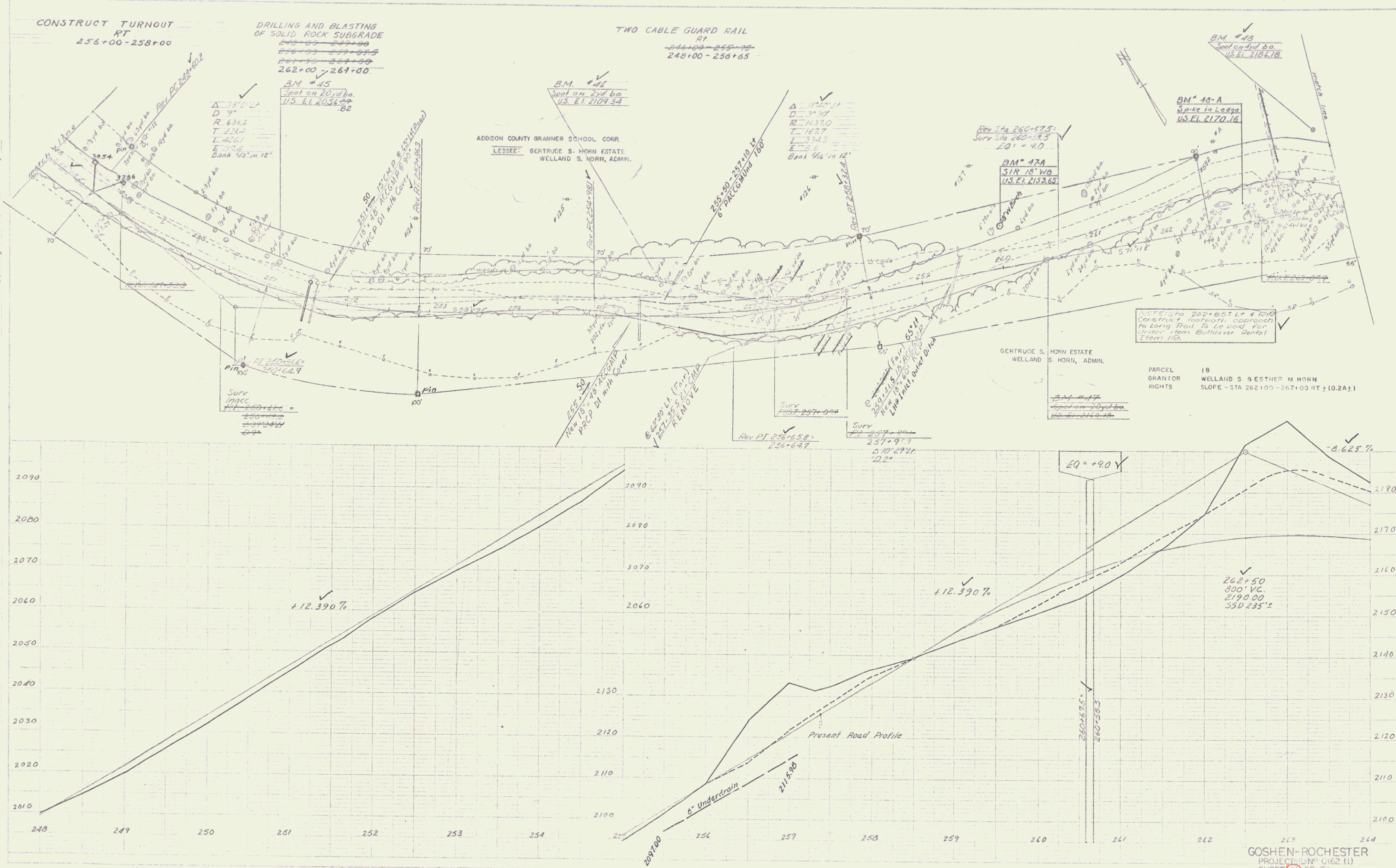


Traced by
 M. J. Gamm
 1/27/59

William
 Wiseman
 1/27/59

Traced by
M. W. Hara
8/58
M. C. Gowan
1/59

M. W. Hara
8/58
M. C. Gowan
1/59



WOOD GUIDE POSTS
 279+00-282+50 LT
 294+00-295+00 RT

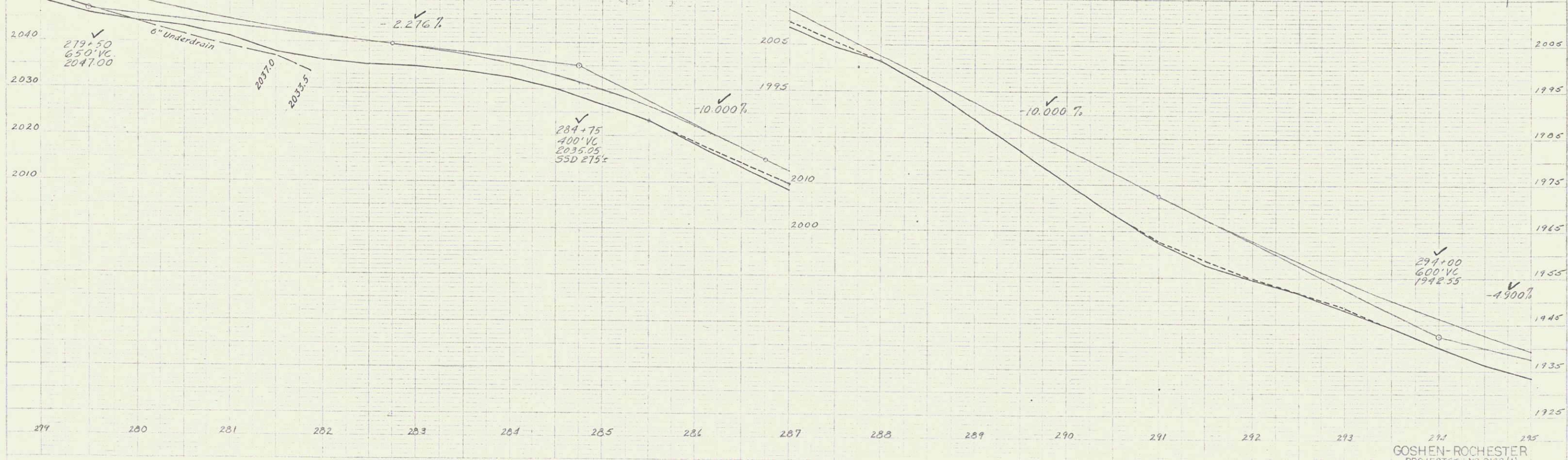
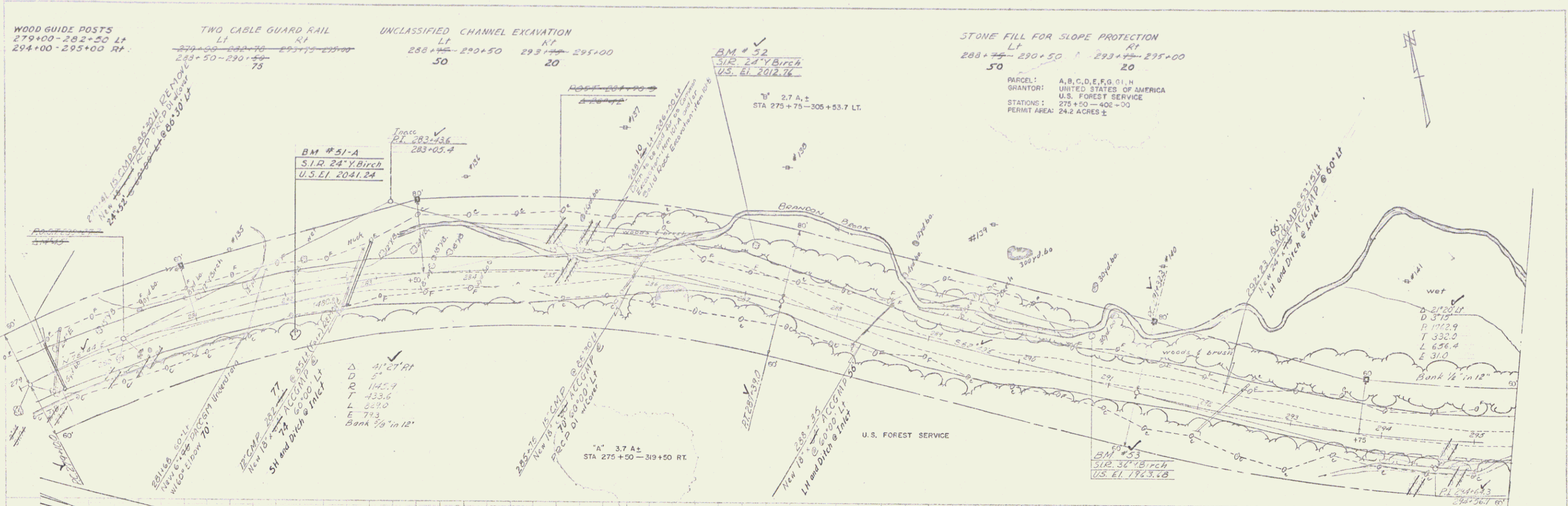
TWO CABLE GUARD RAIL
 LT RT
 279+00-282+50 293+75-295+00
 283+50-290+50 75

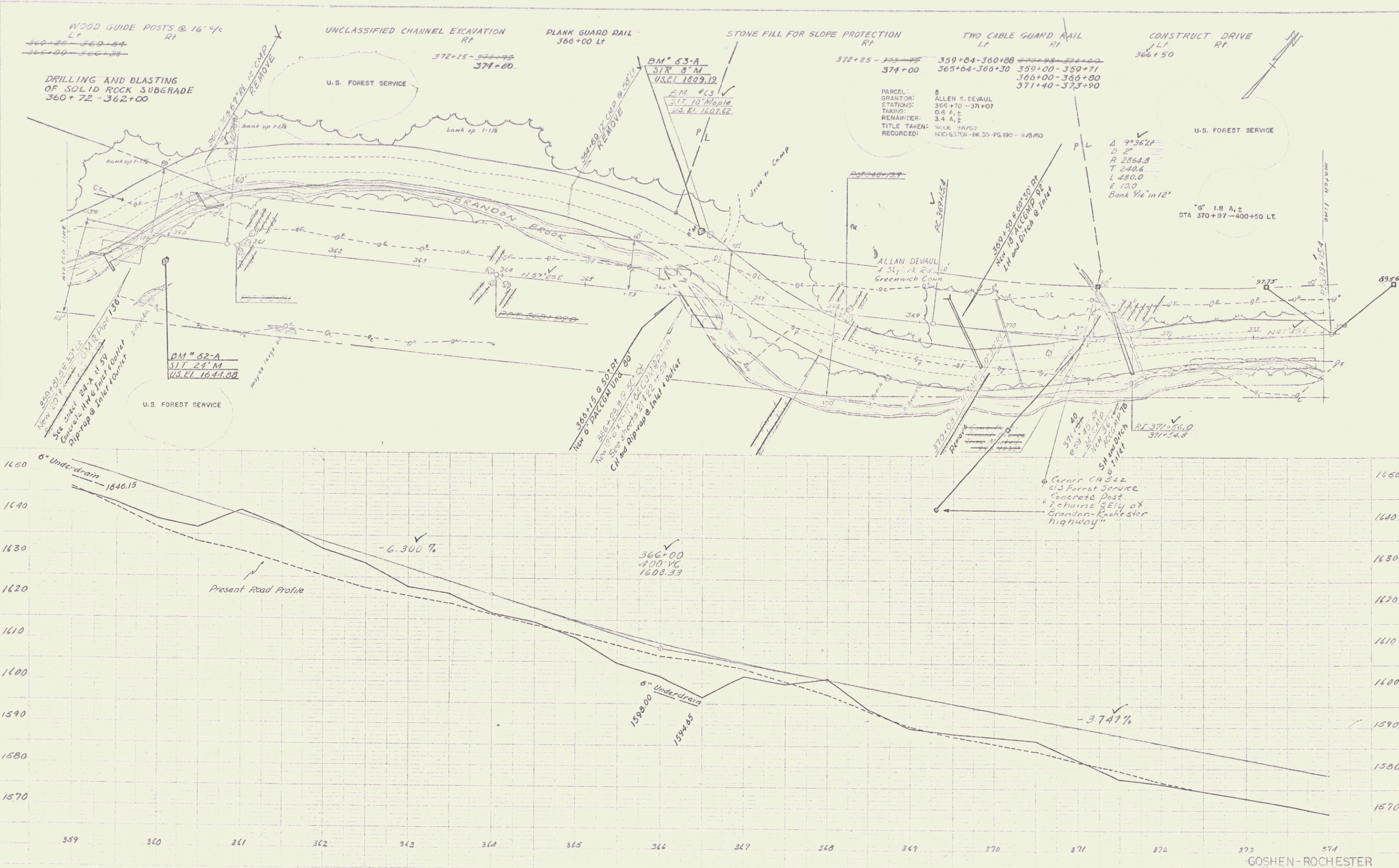
UNCLASSIFIED CHANNEL EXCAVATION
 LT RT
 288+75-290+50 293+75-295+00
 50 20

STONE FILL FOR SLOPE PROTECTION
 LT RT
 288+75-290+50 293+75-295+00
 50 20

PARCEL: A, B, C, D, E, F, G, H
 GRANTOR: UNITED STATES OF AMERICA
 U.S. FOREST SERVICE
 STATIONS: 275+50-402+00
 PERMIT AREA: 24.2 ACRES ±

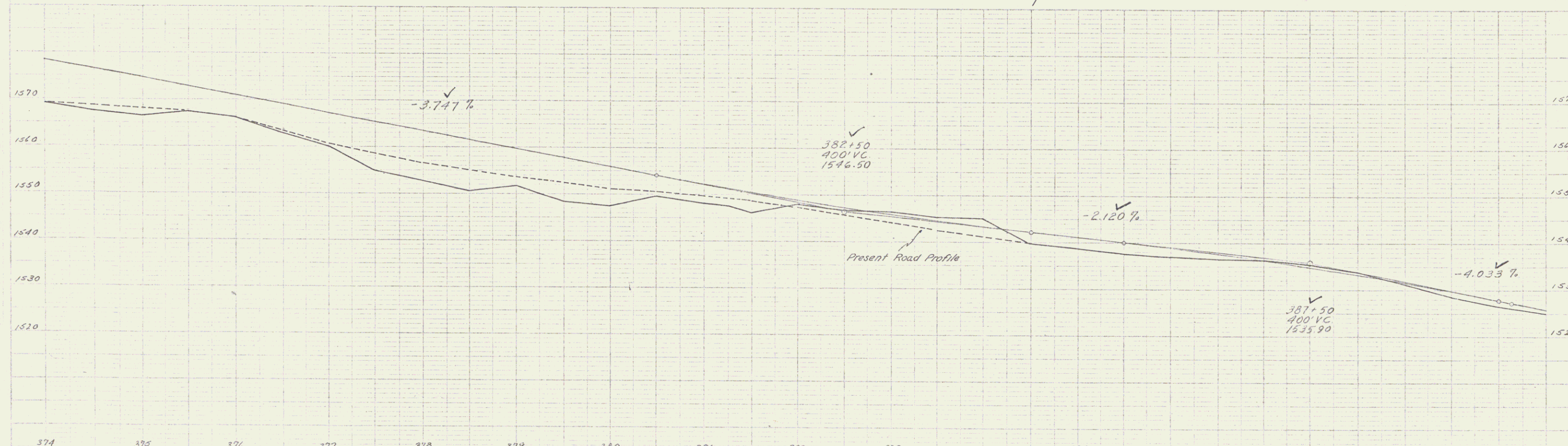
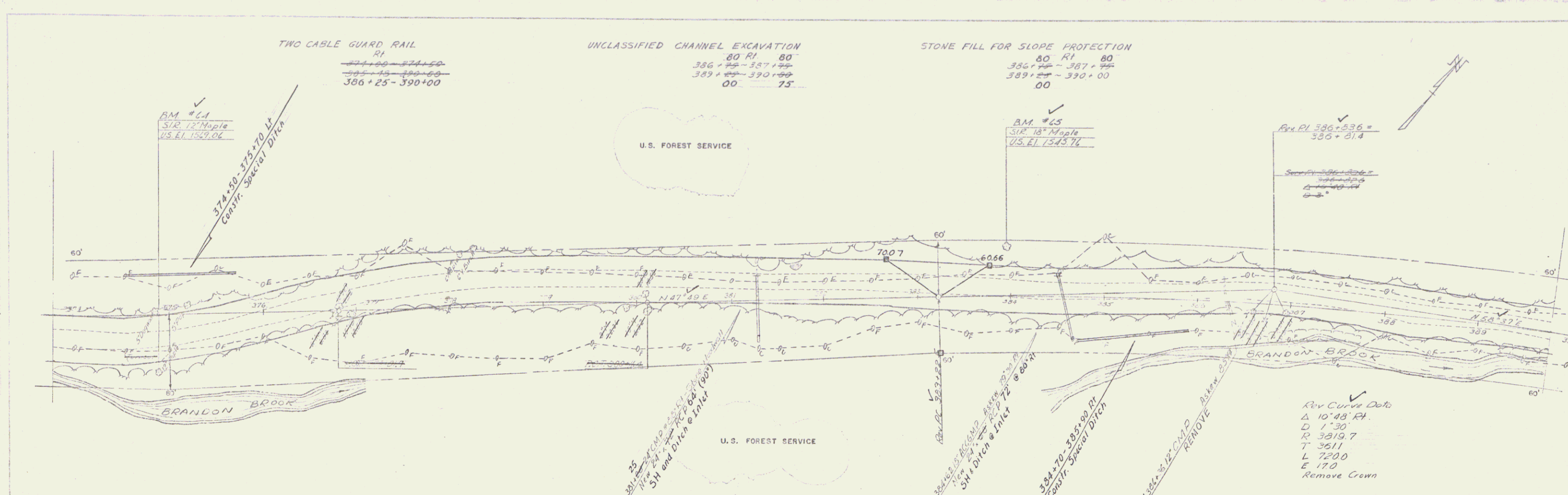
Traced by M/G...
 M/G...
 M/G...





Martin
 8/28
 1956
 M.E. Gowan
 1959
 Traced by

Williams
 8/28
 1959



Traced By
 M. Sullivan
 1/59

M. Sullivan
 1/59

