

INDEX OF SHEETS

- 1 TITLE PAGE
- 2 TYPICAL CROSS SECTION OF IMPROVEMENT
- 3 DRAINAGE AND ITEM QUANTITY SHEET
- 4-7 EARTHWORK SHEETS
- 8 STANDARD SHEET B-1 (BANKING TABLES)
- 9 STANDARD SHEET B-10 (EMBANKMENT ON A SLOPE)
- 10 STANDARD SHEET D-2 (HEADWALLS & UNDERDRAIN)
- 11 STANDARD SHEET G-2A (TWO CABLE GUARD RAIL)
- 12 STANDARD SHEET G-4 (GUIDE POST, MARKER POST & PLANK GUARD RAIL)
- 13 STANDARD SHEET J-1 (MARKERS)
- 14-22 PLAN & PROFILE SHEETS
- 23 DETAILS OF CUMPP ARCH STA. 109+01
- 24 CHANNEL SECTIONS
- 25-64 CROSS SECTIONS

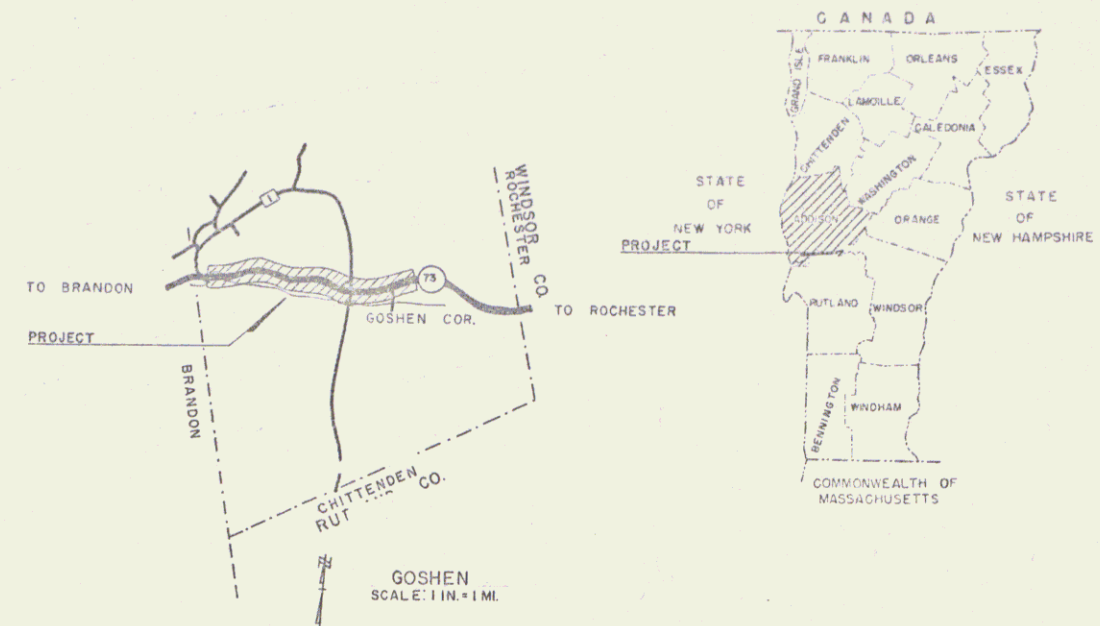
PROJECT NAME & NUMBER	TYPE	PAVEMENT	AREA
GOSHEN S 0162(2)	SINGLE TACK COAT OF REFINED TAR & BLEND MIX PEA STONE SEAL WITH CUTBACK ASPHALT		26,183 sq. yd.
RECORD PLANS			
MATERIALS			
SUB-BASE OF GRAVEL - GOLDEN PIT - GOSHEN, BAKER PIT - BRANDON, VT.			
PEA STONE - VERMONT MARBLE QUARRY - FLORENCE, VERMONT.			
REFINED TAR - KOPPERS PRODUCTS CO. - EVERETT, MASSACHUSETTS.			
ASPHALT - MOBIL OIL CO. - EAST PROVIDENCE, RHODE ISLAND.			
REINFORCING STEEL - HANNIBAL GREEN'S SON & CO. INC. - TROY, N. Y.			
ASPHALT COATED CORR. GALV. METAL PIPE - NORTHEASTERN METAL CULVERT CO. - WESTMINSTER, VERMONT.			
TWO CABLE GUARD RAIL - BETHLEHEM STEEL - ST. GRISWOLD CO. INC. - ESSEX JUNCTION, VERMONT.			
CONTRACTOR - EARLE & MERRY INC. - RUTLAND, VERMONT.	CONTRACT DATED - DECEMBER 10, 1959.		
RESIDENT ENGINEER - ELBERT H. SHAM	CONTRACT STARTED - JANUARY 4, 1960.		
RECORD PLANS - ALEXANDER G. SPIDLE	CONTRACT COMPLETED - OCTOBER 21, 1960.		
	CONTRACT ACCEPTED - OCTOBER 21, 1960.		

STATE OF VERMONT
DEPARTMENT OF HIGHWAYS

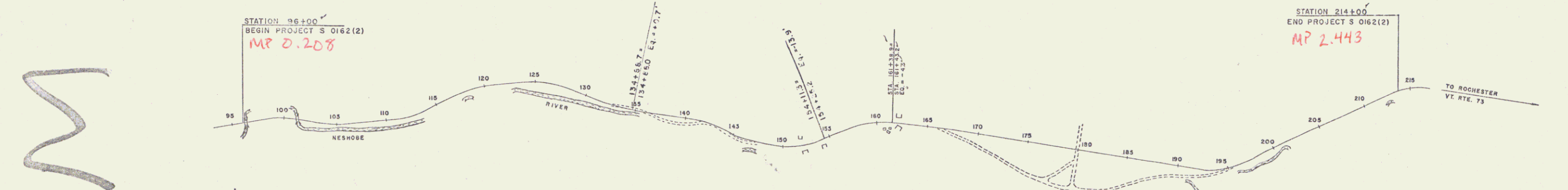
PROPOSED IMPROVEMENT

TOWN OF GOSHEN
COUNTY OF ADDISON
VERMONT ROUTE 73
BRANDON-ROCHESTER ROAD

BEGINNING AT A POINT APPROXIMATELY 0.10 MILE FROM THE BRANDON-GOSHEN TOWN LINE AND EXTENDING EASTERLY 11,782.5 FEET
11,782.5
2232
LENGTH OF PROJECT 11,785.7 FEET = 2.234 MILES



PROJECT: S 0162(2)
PIN: 00R418
DATE: 12/29/1958



PROJECT GOSHEN
ROUTE S 0162(2)
TYPE Single Tack Coat of Refined Tar & Blende Mix, P&S
Stone Seal with Curb& Back Asphalt.
CONTRACTOR EARLE & MERRY INC.
RUTLAND, VERMONT
DATE 11-60
2620
Location Beginning at a point approximately 0.10 mile from the Brandon-Goshen Town Line and extending easterly 11,782.5 feet.

GOSHEN S 0162(2)
CONTRACTOR - EARLE & MERRY INC. - RUTLAND, VT.
RECORD PLANS - ALEXANDER G. SPIDLE
DATE OF PLANS - OCTOBER 21, 1960.

DEFLECTION OF ANGLE	Δ
DEGREE OF CURVE	D
RADIUS OF CURVE	R
TANGENT DISTANCE	T
LENGTH OF CURVE	L
EXTERNAL DISTANCE	E
POINT OF INTERSECTION	PI
POINT OF CURVE	PC
POINT OF TANGENT	PT
POINT ON TANGENT	POT
POINT ON SUB-TANGENT	POST

SCALES

TITLE	1" = 500'
TYPICAL	1" = 20'
PLAN	1" = 50'
PROFILE HORIZONTAL	1" = 50'
PROFILE VERTICAL	1" = 10'
CROSS-SECTIONS	1" = 5' @ 10'

RIGHT-OF-WAY DIVISION
TOWN FILE
PERPETUAL
Town of U+73
(To Be Returned To R.O.W. Division)

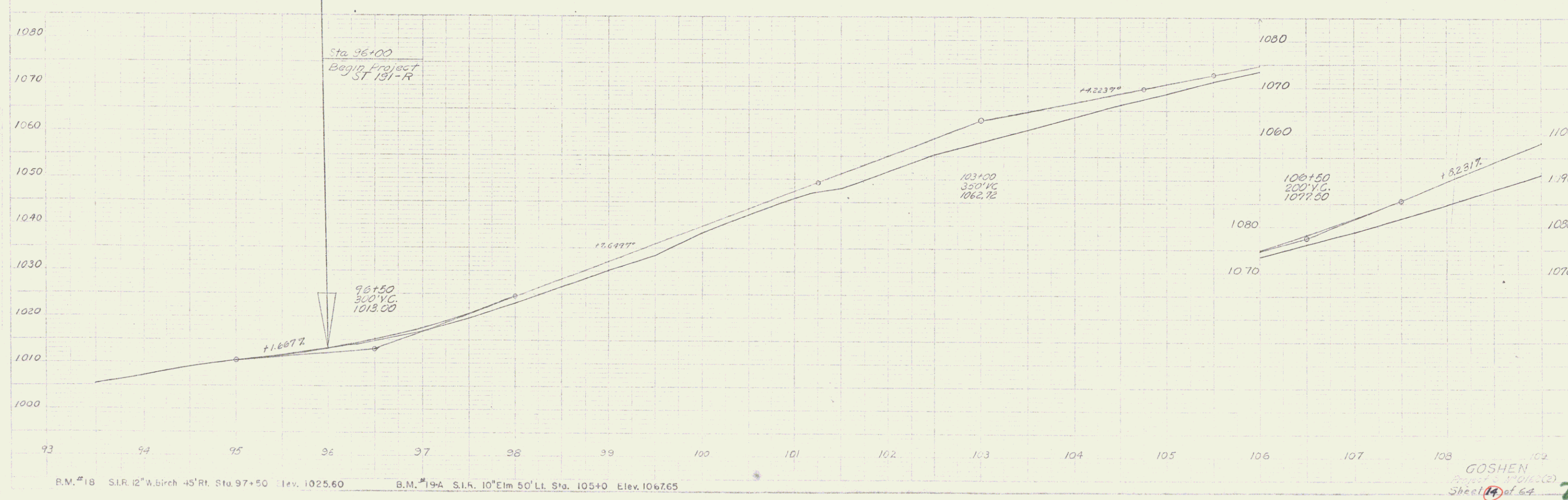
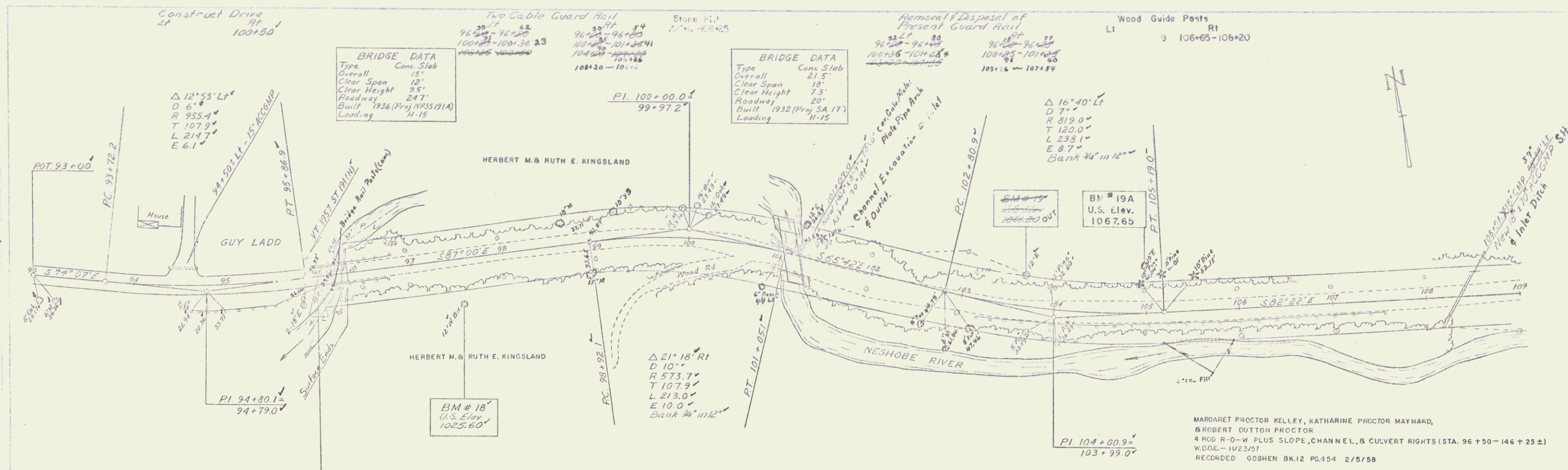
THESE PLANS ARE SUBJECT TO SUCH REVISIONS AS MAY BE REQUIRED BY THE BUREAU OF PUBLIC ROADS OR THE COMMISSIONER OF HIGHWAYS.
CONSTRUCTION IS TO BE CARRIED ON IN ACCORDANCE WITH THE PLANS AND THE STANDARD SPECIFICATIONS FOR HIGHWAY AND BRIDGE CONSTRUCTION OF JANUARY 1956 SUBMITTED TO THE BUREAU OF PUBLIC ROADS AS APPROVED JULY 5, 1956, INCLUDING ALL SUBSEQUENT APPROVED REVISIONS AND SUCH REVISED SPECIFICATIONS AND SPECIAL PROVISIONS AS ARE SUBMITTED WITH THE PLANS.

APPROVED REGISTRY ENGINEER DATE Oct 29 1960	APPROVED SUPERVISOR OF ENGINEERS DATE Dec 27 1958	APPROVED TRAFFIC ENGINEER DATE Dec 29 1958	APPROVED DISTRICT ENGINEER DATE Dec 29 1958	APPROVED HIGHWAY ENGINEER DATE Dec 29 1958	APPROVED DATE Dec 29 1958
---	---	--	---	--	------------------------------

DEPARTMENT OF COMMERCE
BUREAU OF PUBLIC ROADS

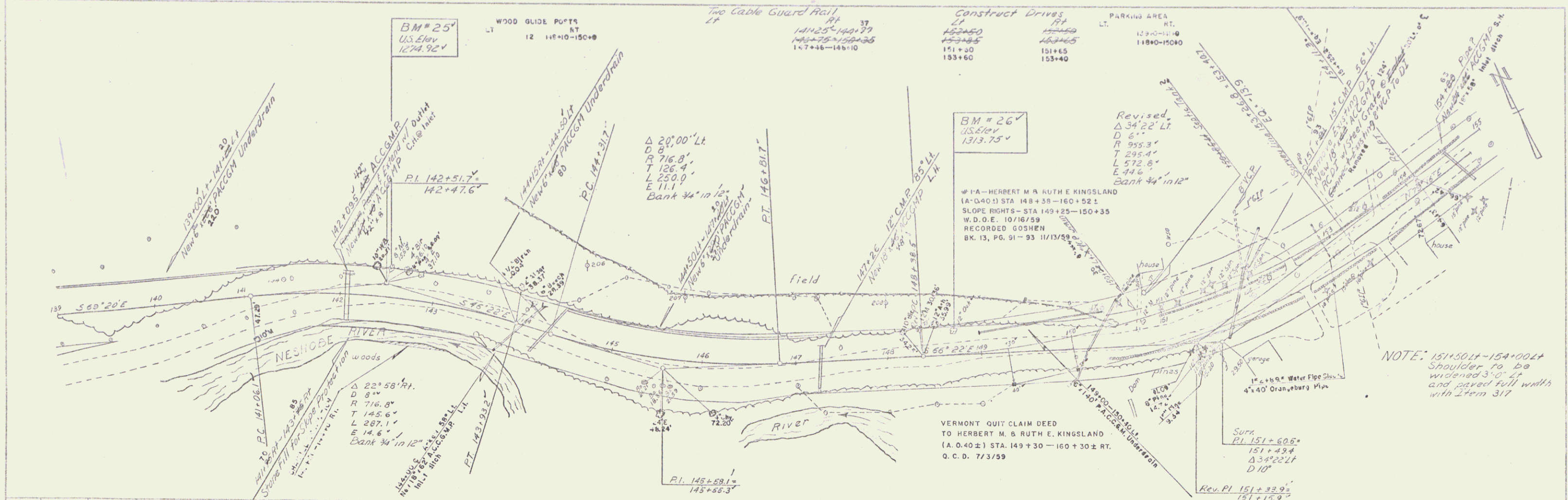
APPROVED _____
DIVISION ENGINEER DATE _____

PROJECT S. NO. 0162(2)
SHEET 1 OF SHEETS 64

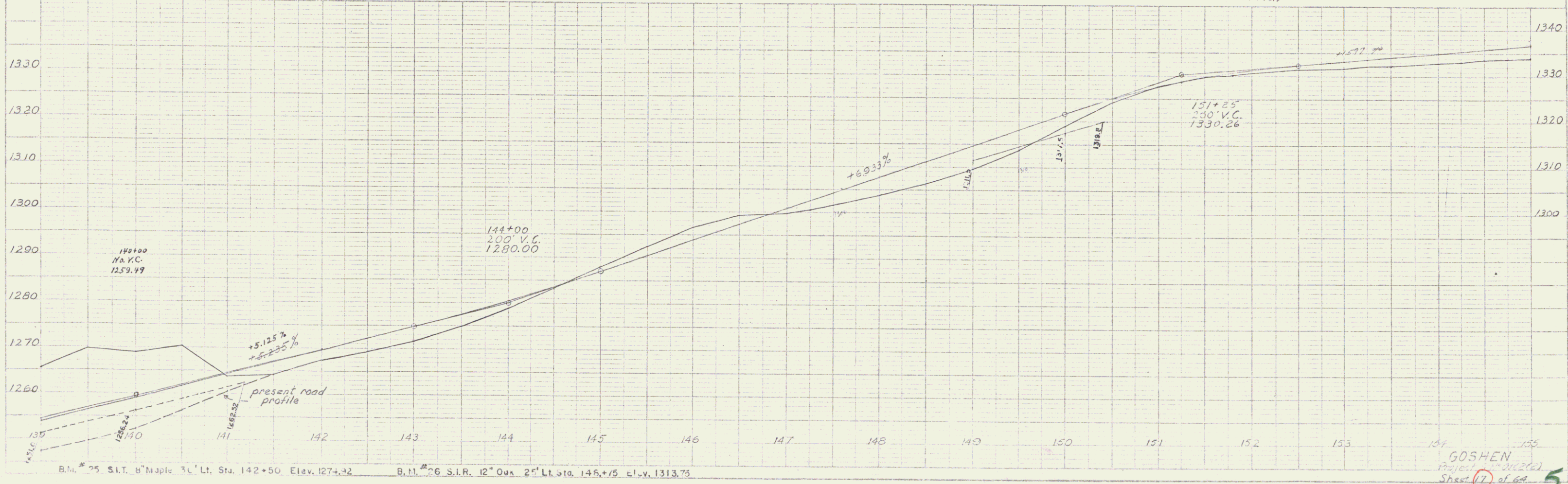


B.M. #18 S.I.R. 12" W. Birch 45' Rt. Sta. 97+50 Elev. 1025.60
 B.M. #19A S.I.R. 10" Elm 50' Lt. Sta. 105+0 Elev. 1067.65

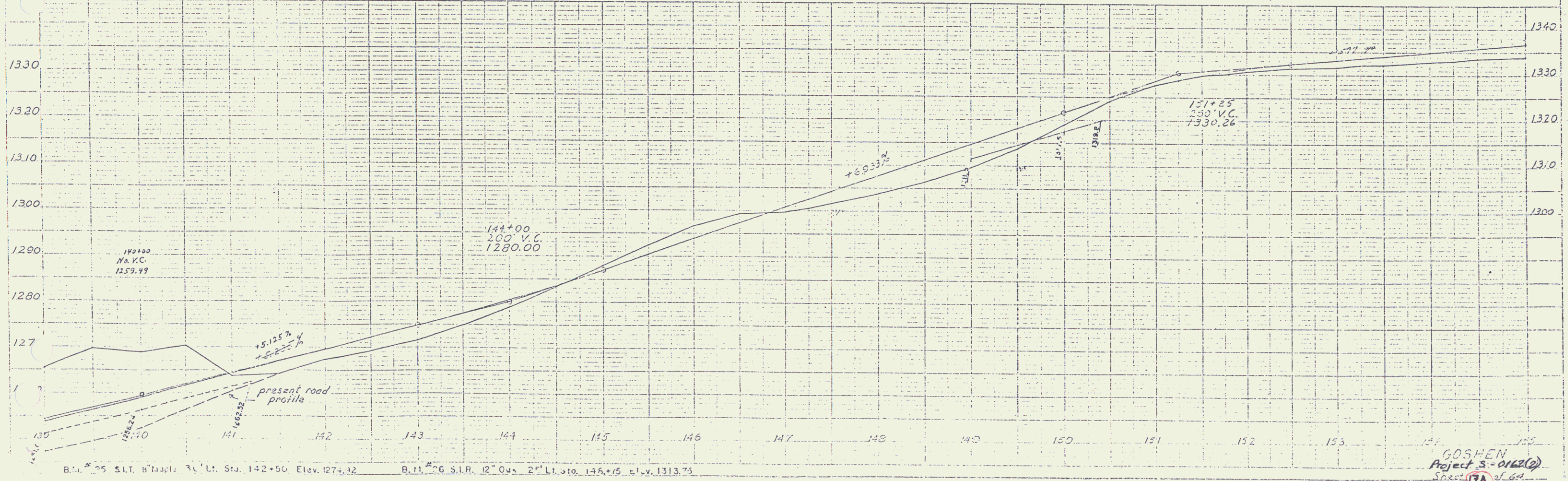
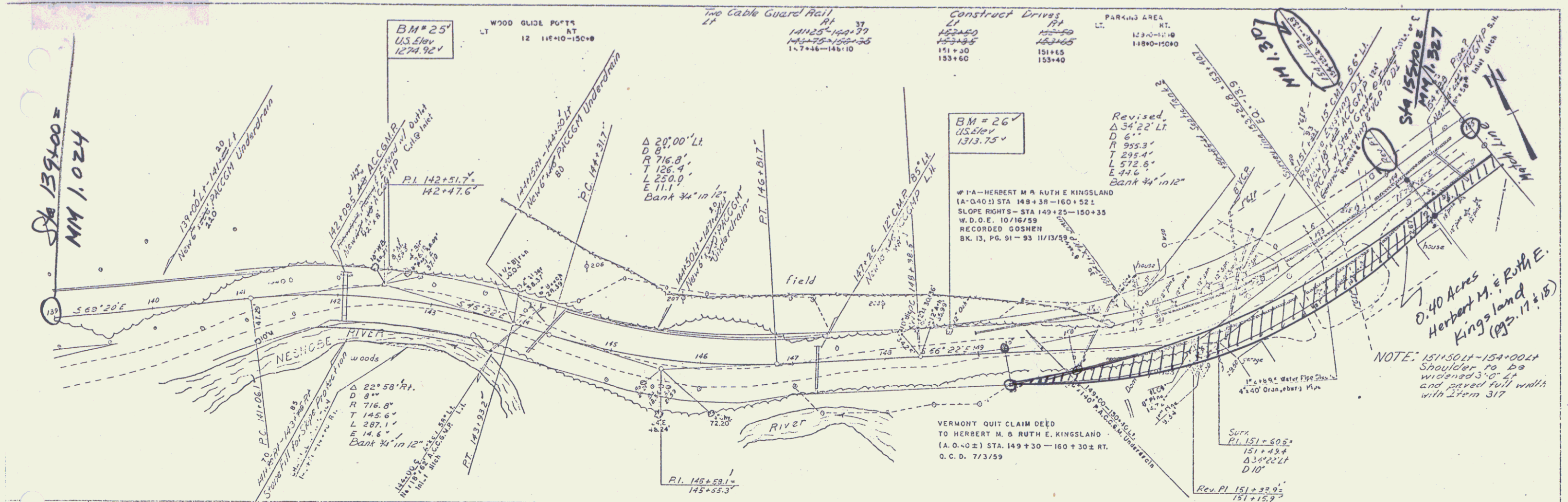
LEVY
 GOSDEN
 Standing
 1958
 TR. Gomez 5/58



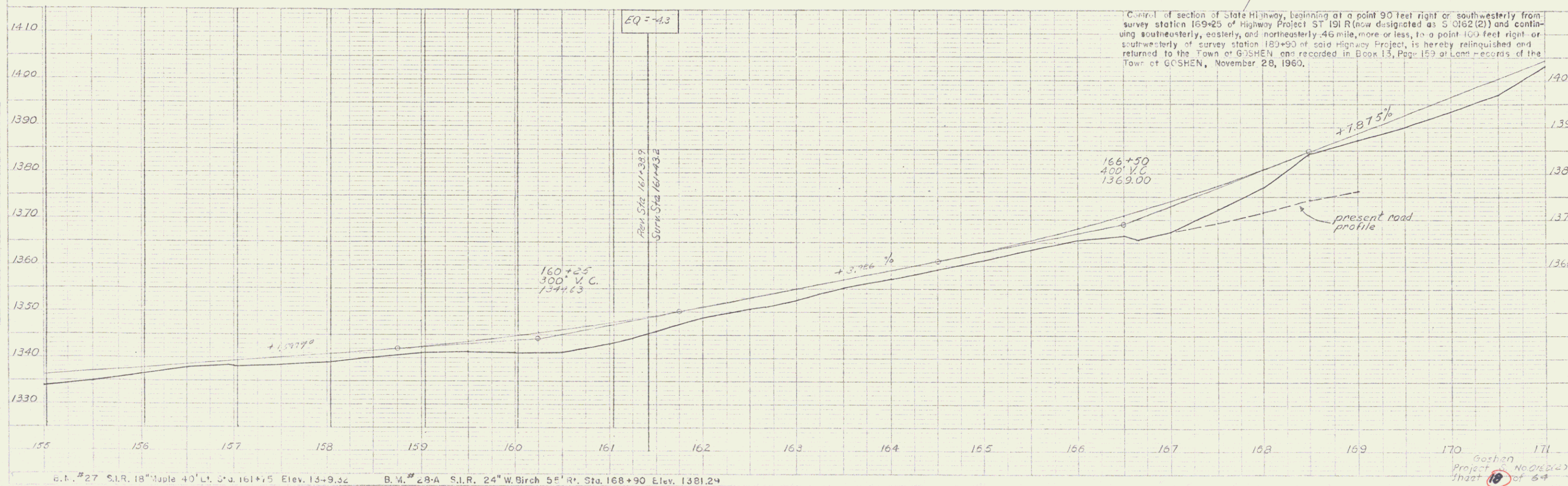
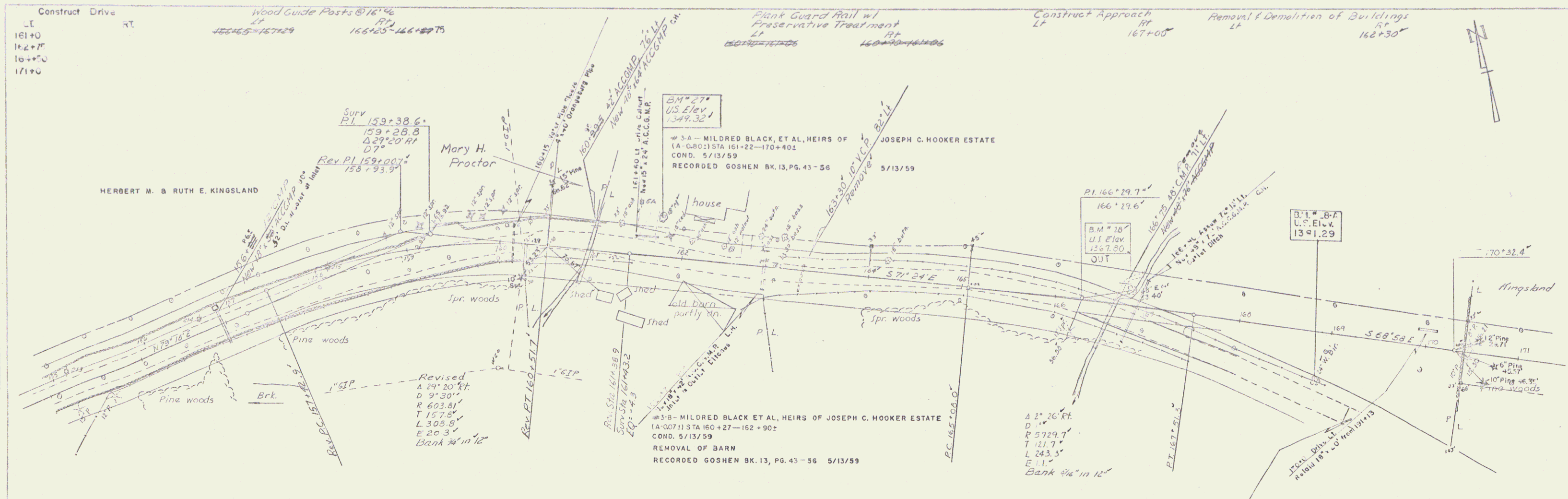
DATE
 5/58



GOSDEN
 Project 10222
 Sheet 17 of 64



6



1/18
 1/20
 1/25
 1/30
 1/35
 1/40
 1/45
 1/50
 1/55
 1/60
 1/65
 1/70
 1/75
 1/80
 1/85
 1/90
 1/95
 1/100
 1/105
 1/110
 1/115
 1/120
 1/125
 1/130
 1/135
 1/140
 1/145
 1/150
 1/155
 1/160
 1/165
 1/170
 1/175
 1/180
 1/185
 1/190
 1/195
 1/200
 1/205
 1/210
 1/215
 1/220
 1/225
 1/230
 1/235
 1/240
 1/245
 1/250
 1/255
 1/260
 1/265
 1/270
 1/275
 1/280
 1/285
 1/290
 1/295
 1/300
 1/305
 1/310
 1/315
 1/320
 1/325
 1/330
 1/335
 1/340
 1/345
 1/350
 1/355
 1/360
 1/365
 1/370
 1/375
 1/380
 1/385
 1/390
 1/395
 1/400
 1/405
 1/410
 1/415
 1/420
 1/425
 1/430
 1/435
 1/440
 1/445
 1/450
 1/455
 1/460
 1/465
 1/470
 1/475
 1/480
 1/485
 1/490
 1/495
 1/500
 1/505
 1/510
 1/515
 1/520
 1/525
 1/530
 1/535
 1/540
 1/545
 1/550
 1/555
 1/560
 1/565
 1/570
 1/575
 1/580
 1/585
 1/590
 1/595
 1/600
 1/605
 1/610
 1/615
 1/620
 1/625
 1/630
 1/635
 1/640
 1/645
 1/650
 1/655
 1/660
 1/665
 1/670
 1/675
 1/680
 1/685
 1/690
 1/695
 1/700
 1/705
 1/710
 1/715
 1/720
 1/725
 1/730
 1/735
 1/740
 1/745
 1/750
 1/755
 1/760
 1/765
 1/770
 1/775
 1/780
 1/785
 1/790
 1/795
 1/800
 1/805
 1/810
 1/815
 1/820
 1/825
 1/830
 1/835
 1/840
 1/845
 1/850
 1/855
 1/860
 1/865
 1/870
 1/875
 1/880
 1/885
 1/890
 1/895
 1/900
 1/905
 1/910
 1/915
 1/920
 1/925
 1/930
 1/935
 1/940
 1/945
 1/950
 1/955
 1/960
 1/965
 1/970
 1/975
 1/980
 1/985
 1/990
 1/995
 1/1000

B.M. #27 S.I.R. 18" Maple 40' Lt. Sta. 161+75 Elev. 1349.32
 B.M. #28-A S.I.R. 24" W. Birch 55' R. Sta. 168+90 Elev. 1381.24

Control of section of State Highway, beginning at a point 90 feet right or southwesterly from survey station 169+25 of Highway Project ST 161 R (now designated as S 0162 (2)) and continuing southeasterly, easterly, and northeasterly 46 miles more or less, to a point 100 feet right or southwesterly of survey station 180+90 of said Highway Project, is hereby relinquished and returned to the Town of GOSHEN and recorded in Book 13, Page 159 of Land records of the Town of GOSHEN, November 28, 1960.

Goshen
 Project No. 0162(2)
 Sheet 7 of 64

PLAN	171	172	173	174	175	176	177	178	179	180	181	182	183	184	185	186	187
SECTION																	
DATE																	
SCALE																	

