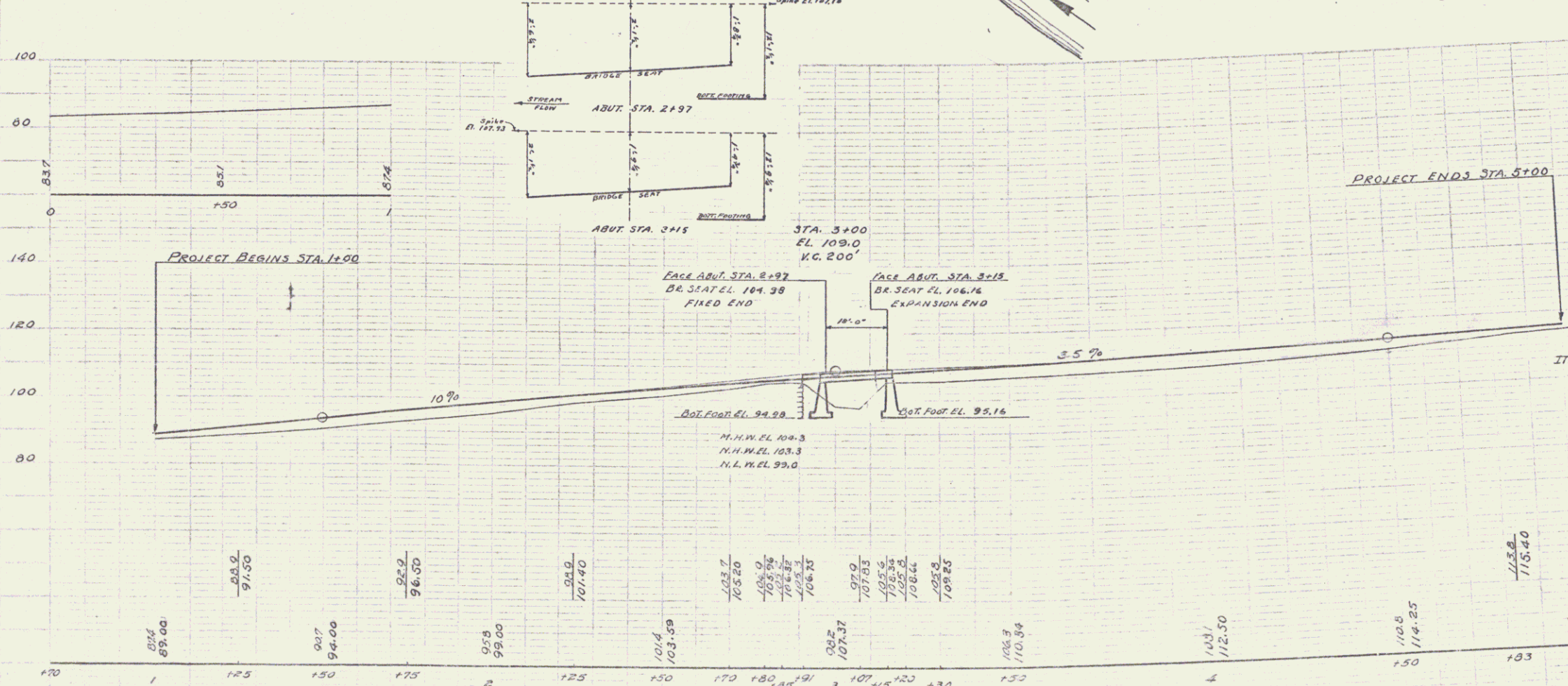
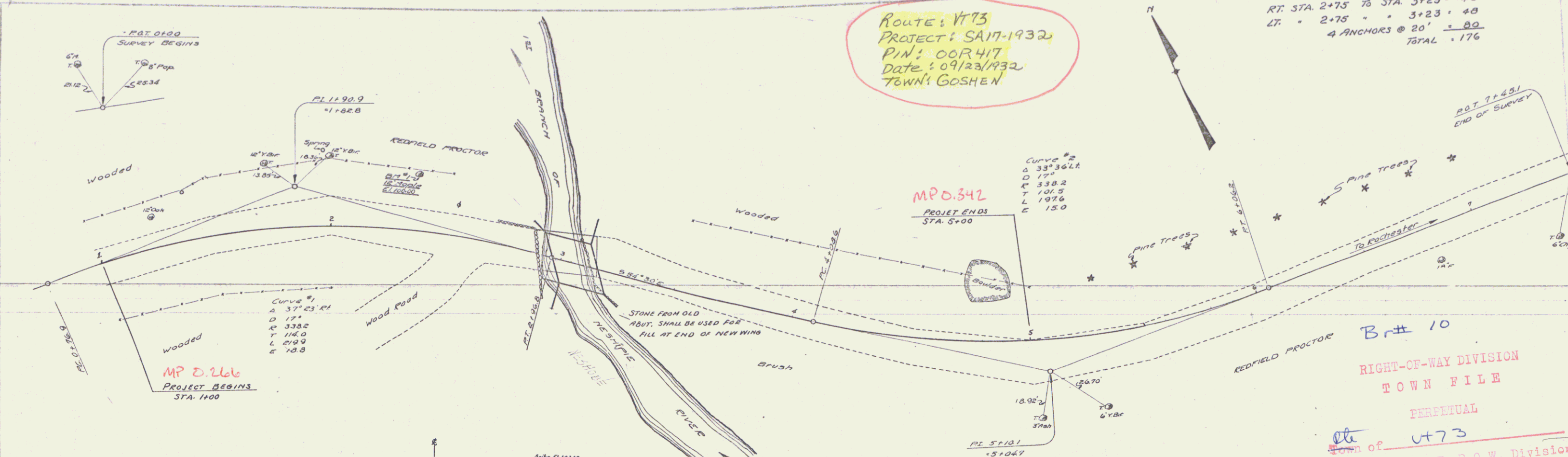


Route: V73
 Project: S.A. 17-1932
 PIN: 00R417
 Date: 09/23/1932
 Town: GOSHEN

CABLE GUARD RAIL
 RT. STA. 2+75 TO STA. 3+23 = 48
 LT. = 2+75 = 3+23 = 48
 4 ANCHORS @ 20' = 80
 TOTAL = 176



INDEX OF SHEETS

SHEET NO 1	PLAN & PROFILE
" 2	TYPICAL SECTION OF IMPROVEMENT (21' GRAVEL)
" 3	S.L.B. 20' NO. CR-18' SPAN-GRAVEL SURFACE 30" SKEW
" 4	S.L.B. 20' NO. CR-18' SPAN-GRAVEL SURFACE 30" SKEW
" 5	S.L.B. 20' NO. CR-18' SPAN-GRAVEL SURFACE 30" SKEW
" 6	S.B. NO. 2 TYPICAL DETAILS NOS. 3204, 3220, 3221
" 7	S.B. NO. 2A " " " 3222, 3227, 3232
" 8	S.B. NO. 2B " " " 3241
" 9	S. NO. 22 STANDARD STRUCTURES
" 10	CROSS SECTIONS
" 12	S. B. 11 LIGHTS, BARRICADES ETC.

ESTIMATED QUANTITIES

ITEM NO	DESCRIPTION	QUANTITY	UNIT
10R11	CON. EXCAV. INCL. BURROUV	962	CY.
15	STR. EXCAV.	180	CY.
20	GRAVEL SURFACE COURSE	200	CY.
33A	CONCRETE CLASS 'A'	29	CY.
"	" " 'C'	30	CY.
33C	REINFORCING STEEL	4500	LB.
34	TEMPORARY BRIDGE	1	LS.
55	TEMPORARY BRIDGE	1	LS.
67A	CABLE GUARD RAIL (WOOD POST)	176	L.F.

CORRECT: A. D. Bishop
 BRIDGE ENGINEER
 APPROVED: [Signature]
 CHIEF ENGINEER

GOSHEN BRIDGE
 S.A. # 17-1932