

INDEX OF SHEETS

SHEET NO. 1	TITLE PAGE
" 2	TYPICAL CROSS-SECTION OF IMPROVEMENT GRAVEL SURFACE COURSE ITEM-20
" 3	BANKING AND WIDENING TABLES
" 4-6	PLAN AND PROFILE
" 7	DETAILS OF 12 X 10 R.C. BOX
" 8	STANDARD STRUCTURE SHEET S-30 GUARD RAIL
" 9	" " S-31 BOUNDARY MARKERS
" 10	" " S-40 BARRICADES SIGNS & LIGHTS
"	116GROSS SECTIONS

Standard Structure Sheet 530 approved by the Chief Engineer on Aug 15, 1933.

Standard Structure Sheet 531 approved by the Chief Engineer on July 25, 1934.

STATE OF VERMONT
STATE HIGHWAY DEPARTMENT

PLAN AND PROFILE OF PROPOSED
STATE HIGHWAY
U. S. WORKS PROGRAM STATE SECONDARY PROJECT (W.P.S.S. 191A)

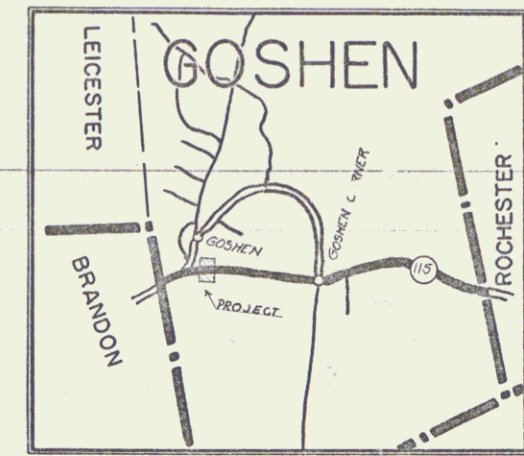
TOWN OF GOSHEN
BRANDON-ROCHESTER ROAD

FROM A POINT 872 FEET EAST OF THE
BRANDON-GOSHEN TOWN LINE EASTERLY 0.274 MILES

LENGTH OF PROJECT 14500 FEET =

0.274 MILES

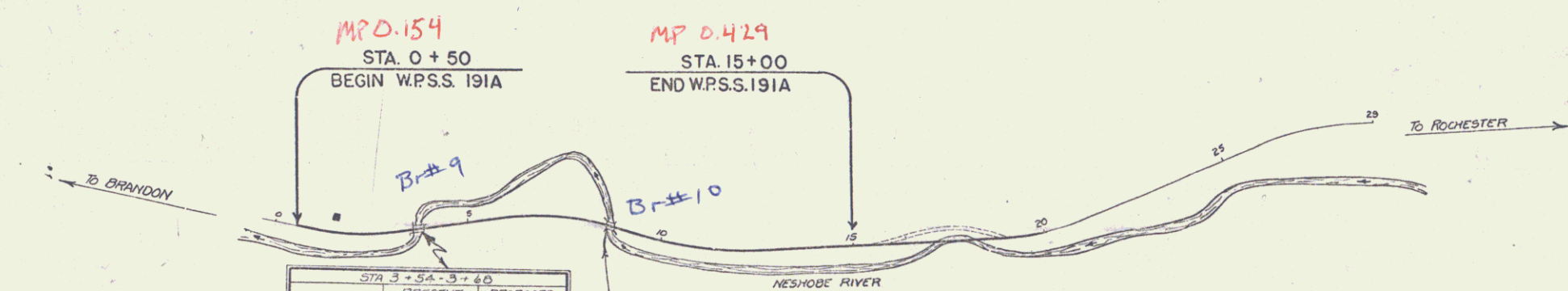
FED. ROAD DIST. NO.	STATE	W.P.S.S. PROJ. NO.	FISCAL YEAR	SHEET NO.	TOTAL SHEETS
9	Vt.	191A	1936	1	16



Route: VT 73
Project: WPSS 191A
Pin: 00R416
Date: 02/21/1936

RIGHT-OF-WAY DIVISION
TOWN FILE
PERPETUAL
Town of VT 73
(To Be Returned To R.O.W. Division)

APPROVED: Feb 21 1936
H.E. August
COMMISSIONER OF HIGHWAYS
SUBMITTED BY ORDER OF THE STATE HIGHWAY BOARD



CONVENTIONAL SIGNS

- COUNTY LINE
- TOWN LINE
- FENCE LINE
- STONE WALL
- UNFENCED PROPERTY
- GUARD RAIL
- TRAVELED WAY
- RAILROAD
- RETAINING WALL
- CENTER LINE
- SURVEY LINE
- CULVERT
- DROP INLET
- TROLLEY POLE
- POWER POLE
- TELEPHONE POLE
- TREES
- HEDGE

GROUND ELEVATION DATUM LINE

CURVE DATA

- DEFLECTION ANGLE
- DEGREE OF CURVE
- RADIUS OF CURVE
- TANGENT DISTANCE
- LENGTH OF CURVE
- EXTERNAL DISTANCE
- POINT OF INTERSECTION
- POINT OF CURVE
- POINT OF TANGENT
- POINT ON TANGENT

STA. 3+50 - 3+40	
TYPE	I-BERM
SPAN	1'-15"
LENG. OVERALL	21'
ROADWAY WIDTH	14'

STA. 0+37.0 - 0+53	
TYPE	I-BERM BRIDGE
SPAN	1'-10"
LENG. OVERALL	21'
ROADWAY WIDTH	20'
1/2"=100' COND. - RETAIN. & SURFACE	

SCALES

TITLE	1" = 200'
TYPICAL	1" = 2'
PLAN	1" = 50'
PROFILE - HOR.	1" = 50'
PROFILE - VER.	1" = 10'
CROSS-SECTIONS	1" = 5'
SHEET 1	
PLAN	1" = 20'
PROFILE - HOR.	1" = 20'
PROFILE - VER.	1" = 10'

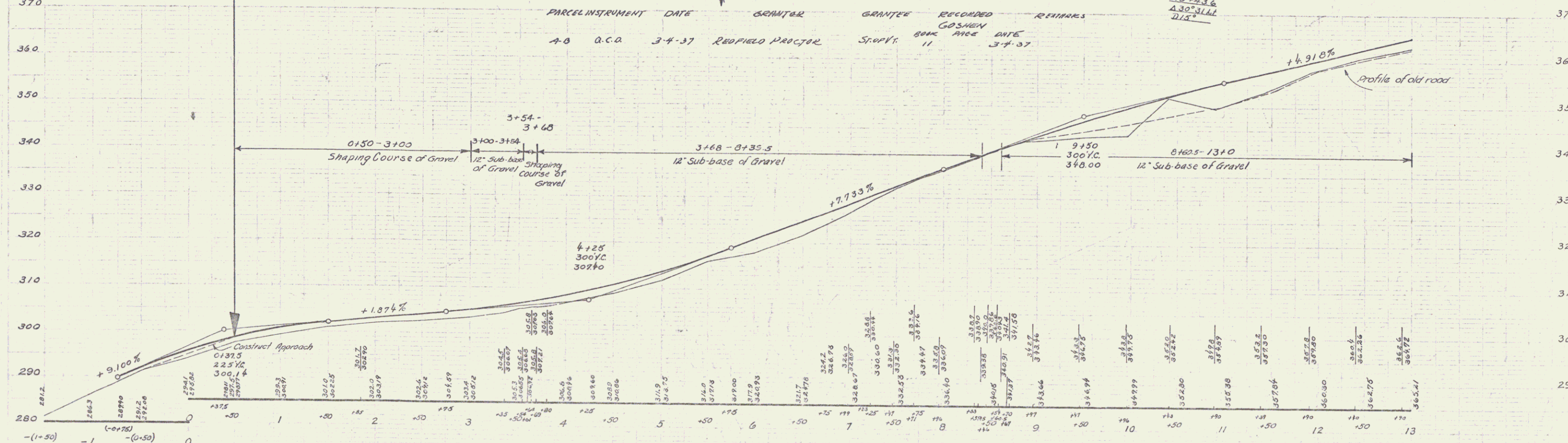
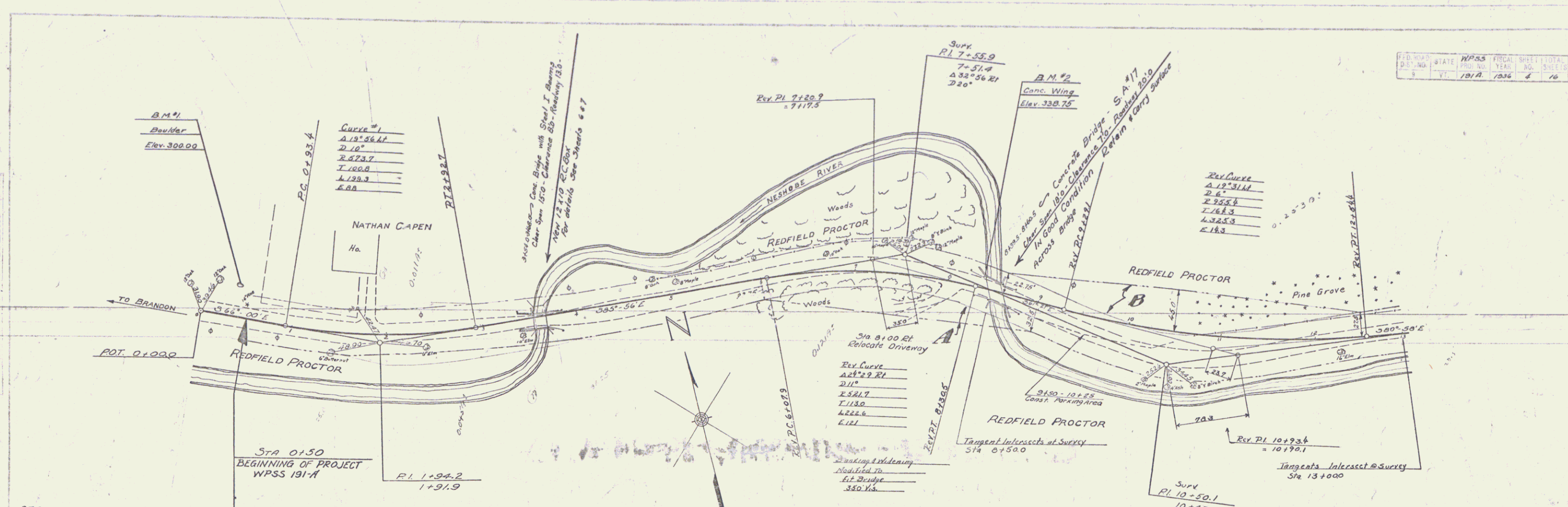
These plans are subject to such revisions as may be required by the Bureau of Public Roads or the Commissioner of Highways. Construction is to be carried on in accordance with the plans and Standard Road and Bridge Specifications of 1930, including all subsequent approved revisions and such revised specifications and special provisions as are submitted with the plans. Attention of the contractor is called to the fact that the State Highway Board reserves the right to extend this project at the same contract prices. Said cost of extension not to exceed 25% of the amount of the contract.

RECOMMENDED
DISTRICT ENGINEER BUREAU OF PUBLIC ROADS
RECOMMENDED FOR APPROVAL
CHIEF ENGINEER BUREAU OF PUBLIC ROADS
APPROVED
DIRECTOR - BUREAU OF PUBLIC ROADS

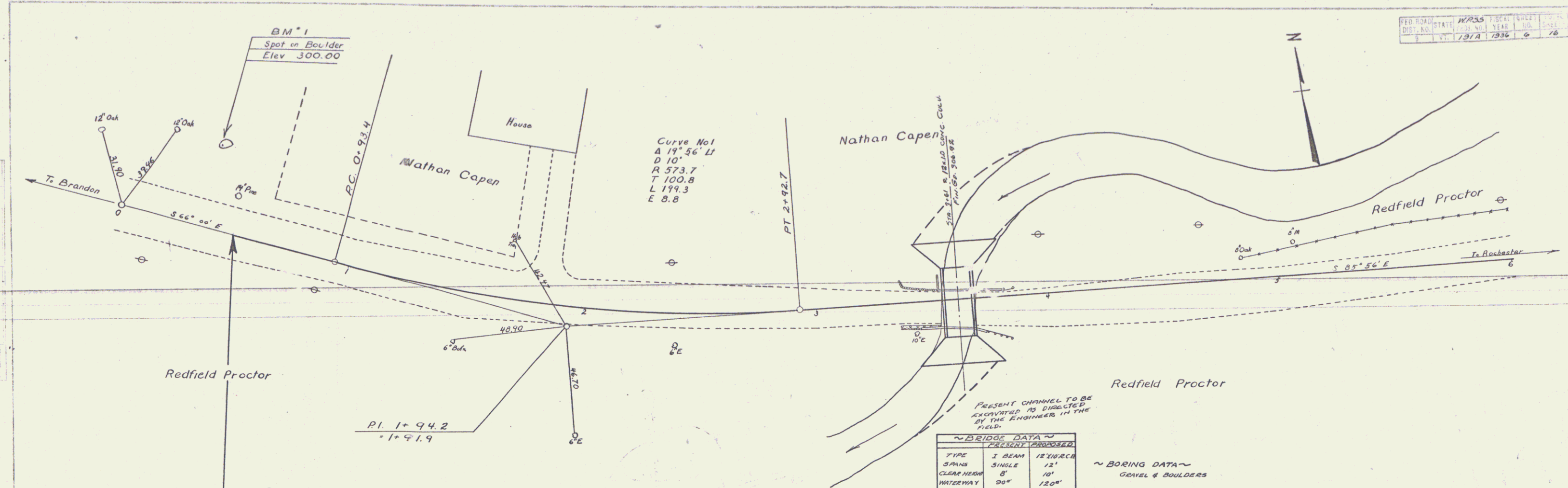
CORRECT: Feb 21 1936
ROAD ENGINEER

SERIES WPSS NO. 191A FILED
SHEET 1 OF 16

DIST. # 3 PLANS



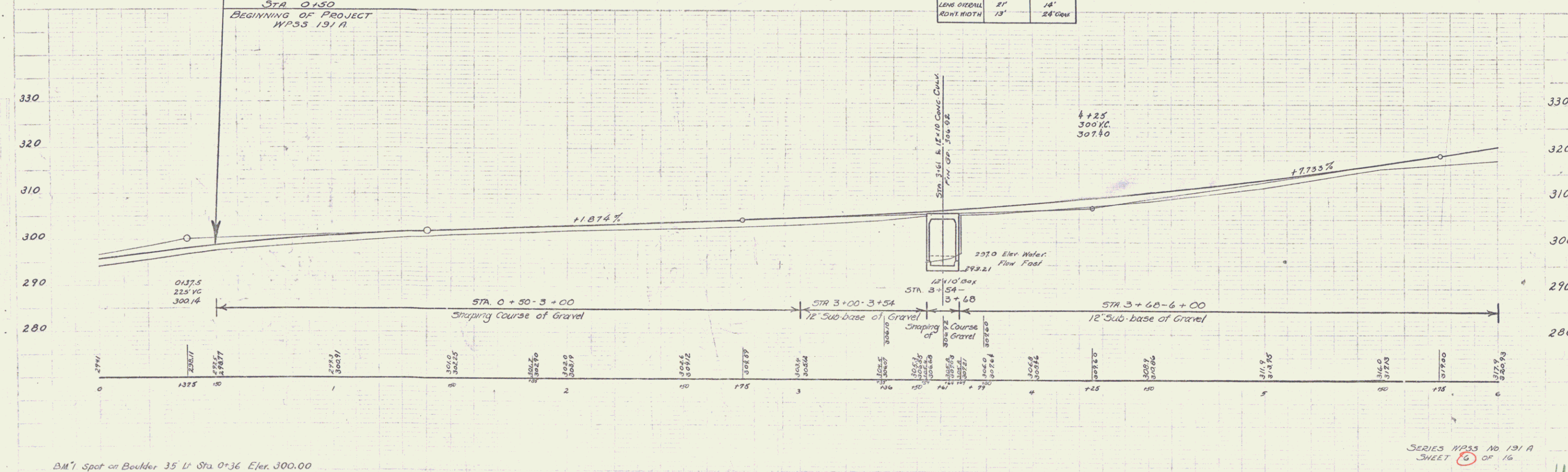
B.M.1 - Spot on Boulder 35' Lt. of Sta. 0+36 - Elev. 300.00.
 B.M.2 - " " Concrete Bridge Wing 12' Lt. of Sta. 8+37 - Elev. 338.75.



~ BRIDGE DATA ~

PRESENT PROPOSED	
TYPE	I BEAM
SPAN	SINGLE 12'
CLEARWAY	8'
WATERWAY	30"
LENS ORRDAL	21'
ROUWTH	13'

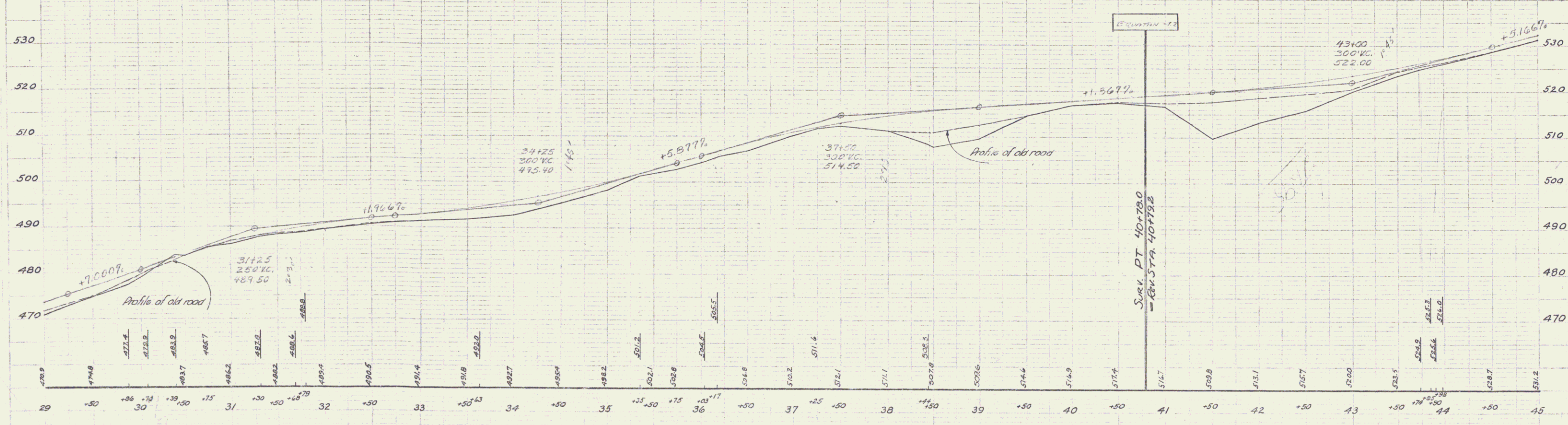
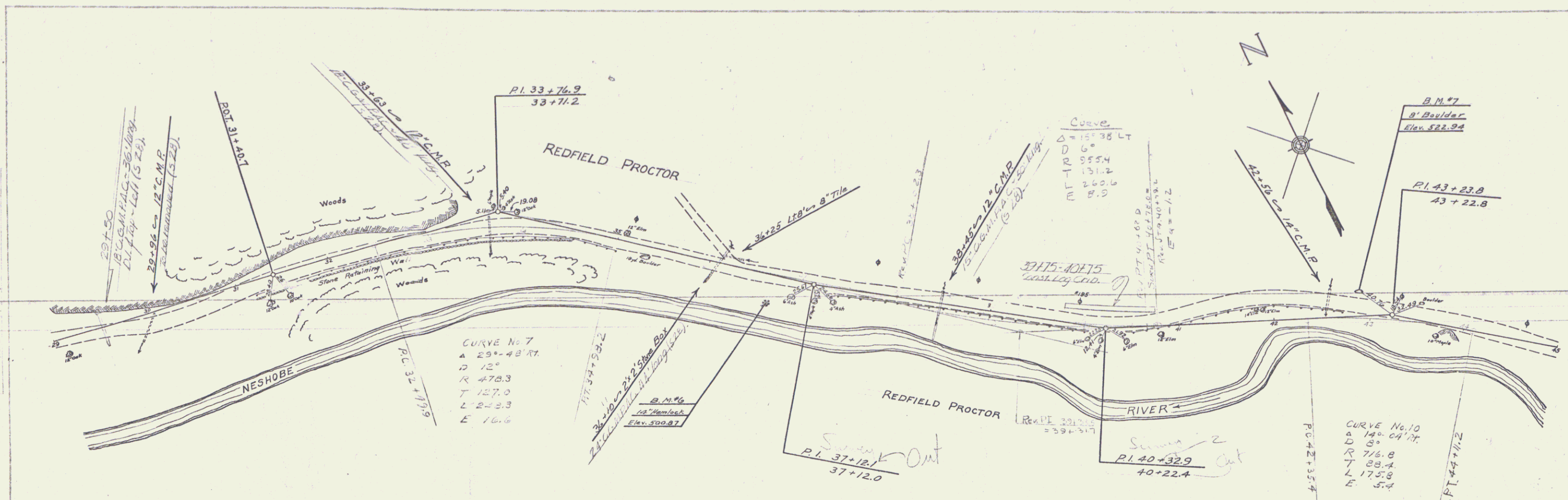
~ BORING DATA ~
GRAVEL & BOULDERS



Burnett
 10-25
 1936

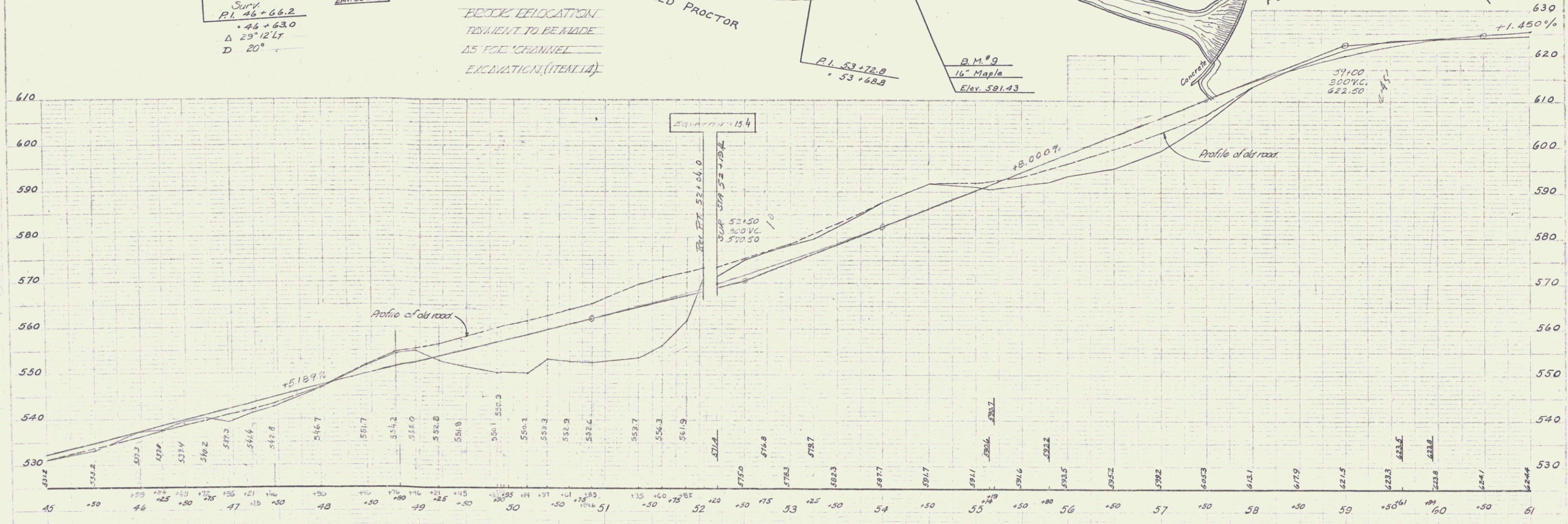
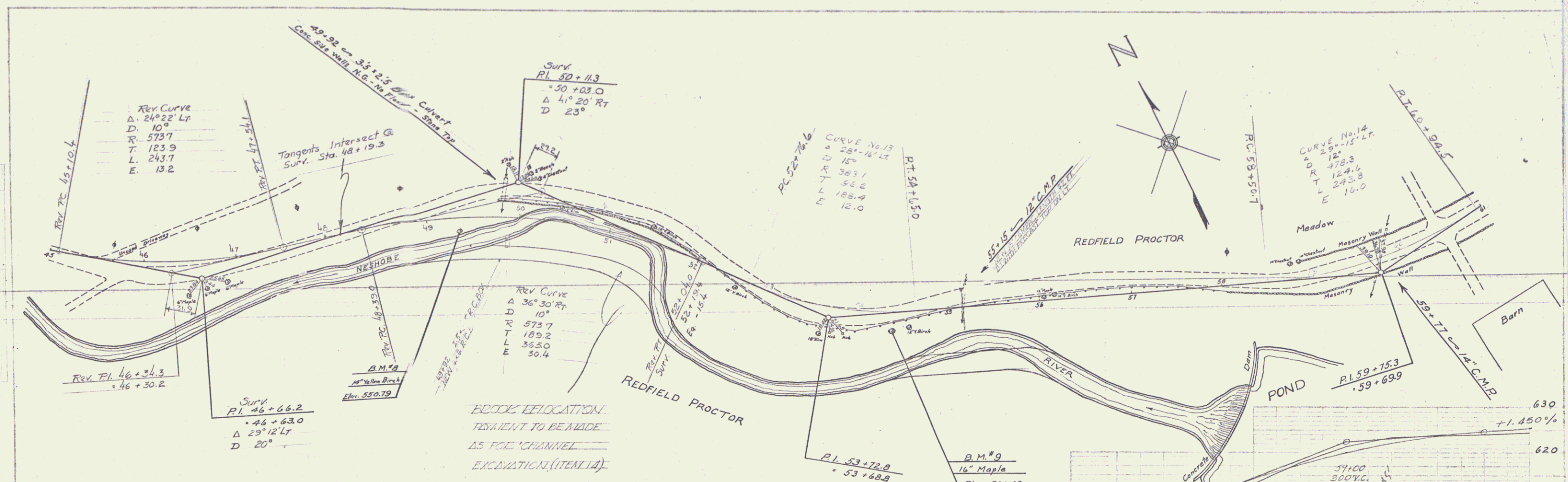
Burnett
 10-25
 1936

BM 1 Spot on Boulder 35' L Sta. 0+36 Elev. 300.00



B.M.#6 - Spike in Root of 14" Hemlock 31' RT. of Sta 34+65 - Elev. 500.87.
 B.M.#7 - Post set on 8' Boulder (or Ledger) 27' LT. of Sta 42+87 - Elev. 522.94.

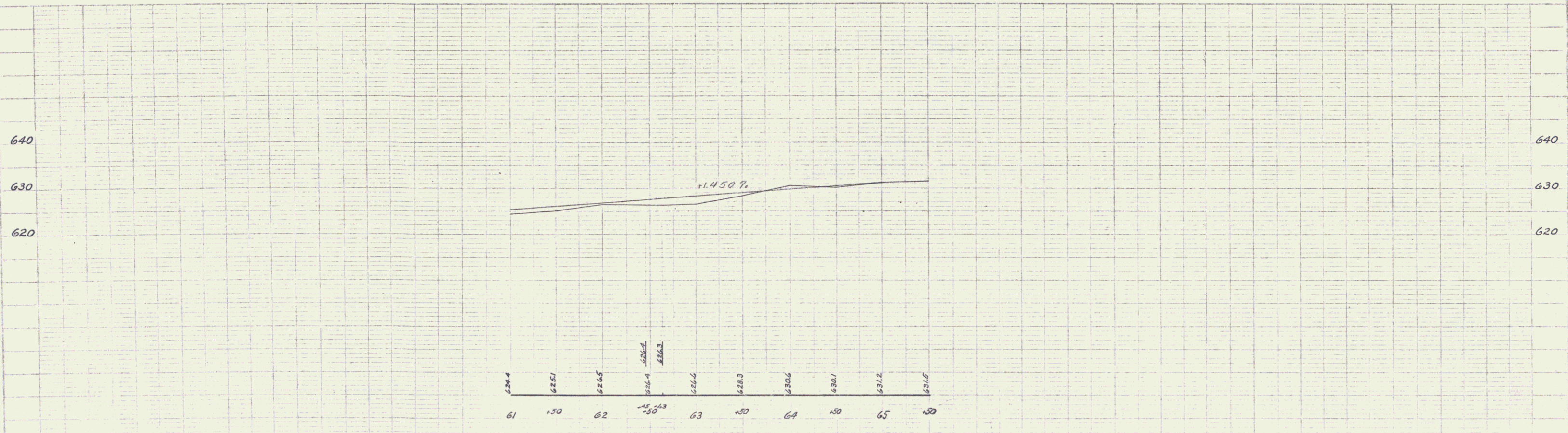
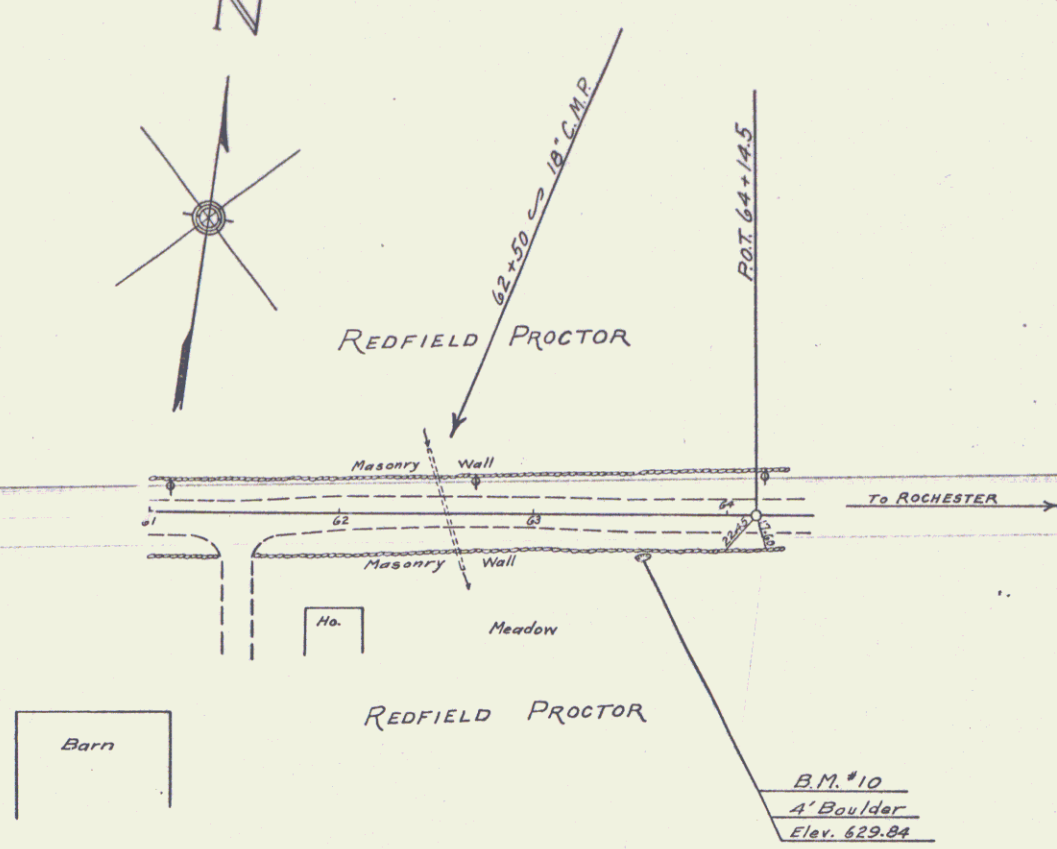
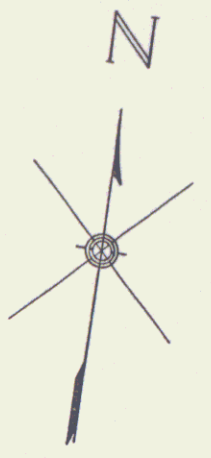
SERIES WPSS No. 191-A
 SHEET 6A OF 5



B.M.#8 - Spike in Root of 12" Yellow Birch 36' Rt. of Sta. 49+34 - Elev. 550.79.
 B.M.#9 - Trunk of 16" Maple 125' Rt. of Sta. 54+38 - Elev. 591.43.

PLAN
 SHEET
 COURSE
 No. 191-A

SHEET
 COURSE
 No. 191-A



B.M. #10 - First Spot on 4' Boulder 20.5 Rt. of Sta. 63+56 - Elev. 629.84.

SERIES WP55 No. 191-A
 SHEET 60 of 7