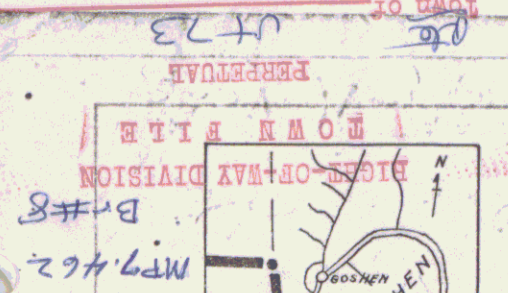


(To be returned to R.O.W. Division)



PROJECT
 BRIDGE OF TOWN LINE
 BRIDGE OF TOWN LINE
 BRIDGE OF TOWN LINE
 BRIDGE OF TOWN LINE

BRIDGE DATA

TYPE	PRESENT	PROPOSED
SPAN	22.3'	70'
CLEAR HEIGHT	9.0'	11'
WATERWAY	160 Sq. Ft.	450 Sq. Ft.
OVERALL SPAN	13.5'	24'
ROADWAY WIDTH		24'

STRUCTURES

STATION	POS.	CGMBAC DIA.	LEN.	EXCAV. EARTH	ROCK	C.R.M.
7+00	Rt.	12"	24'	10 ex.	0	2.2 ex.

GUARD RAIL

STA. FROM	TO	POS.	LENGTH LIN. FT.	ANCHORS EACH
6+74	10+63	Lt.	370	2
7+17	10+63	Rt.	346	2
Total			716	4

INDEX OF SHEETS

- Plan & Profile (Roadway)
- Plan & Profile (Channel)
- Details of Abutments
- 31B 2A 1 Span @ 74' Skew 30' No Sidewalk
- 5 B 5C Cable Guard Rail (Bridge)
- 5 B 11 Barricades, Signs & Lights
- 5 B 20 Details of C.G.R.L. & Gen. Notes
- 5 2B Pipe Culverts
- 5 30 Cable Guard Rail (Roadway)
- 10-14 Cross Sections (Roadway)
- 15-22 Cross Sections (Channel)

SUMMARY OF QUANTITIES

ITEM	QUANTITY	UNIT
Common Excav Incl. Borrow	200	cy
Trench Excav of Earth	10	cy
Channel Excav	1349	cy
Structure Excav	159	cy
Maintenance of Traffic	625	L.S.
Sub-base of Gravel	320	cy
Gravel Surface Course	105	cy
Concrete Class A	10,509	sq. yd.
Reinforcing Steel	7	L.S.
Steel Superstructure (0.142')	1	L.S.
General Bidding Messory	3	cy
15' Corr. Galy Met. Pipe, Asph. Coat.	24	L.S.
Removal of Present Superstructure (Temp. Br.)	1	L.S.
Heavy Stone Fill (Modified)	1475	cy
Cable Guard Rail	716	L.F.
Anchor for Cable Guard Rail	5	each
Cutting & Removing Trees		
Force Account		
Channel Excav	300	cy
Temporary Bridge	1	L.S.

Force Account

ITEM	QUANTITY	UNIT
Channel Excav	300	cy
Temporary Bridge	1	L.S.

Notes: Material at bridge site is nested boulders and coarse gravel, impossible to penetrate.

Notes: Construct Satisfactory Approach

Notes: Towns of Goshen-Brandon Project: PWA 1020-4-F-A

Notes: Rm# 00RH15 Date 2/7/1939

Notes: Route VT 73

Notes: GOSHEN-BRANDON TOWN LINE BRIDGE PWA. DOC. NO. VT. 1020-4-F-A

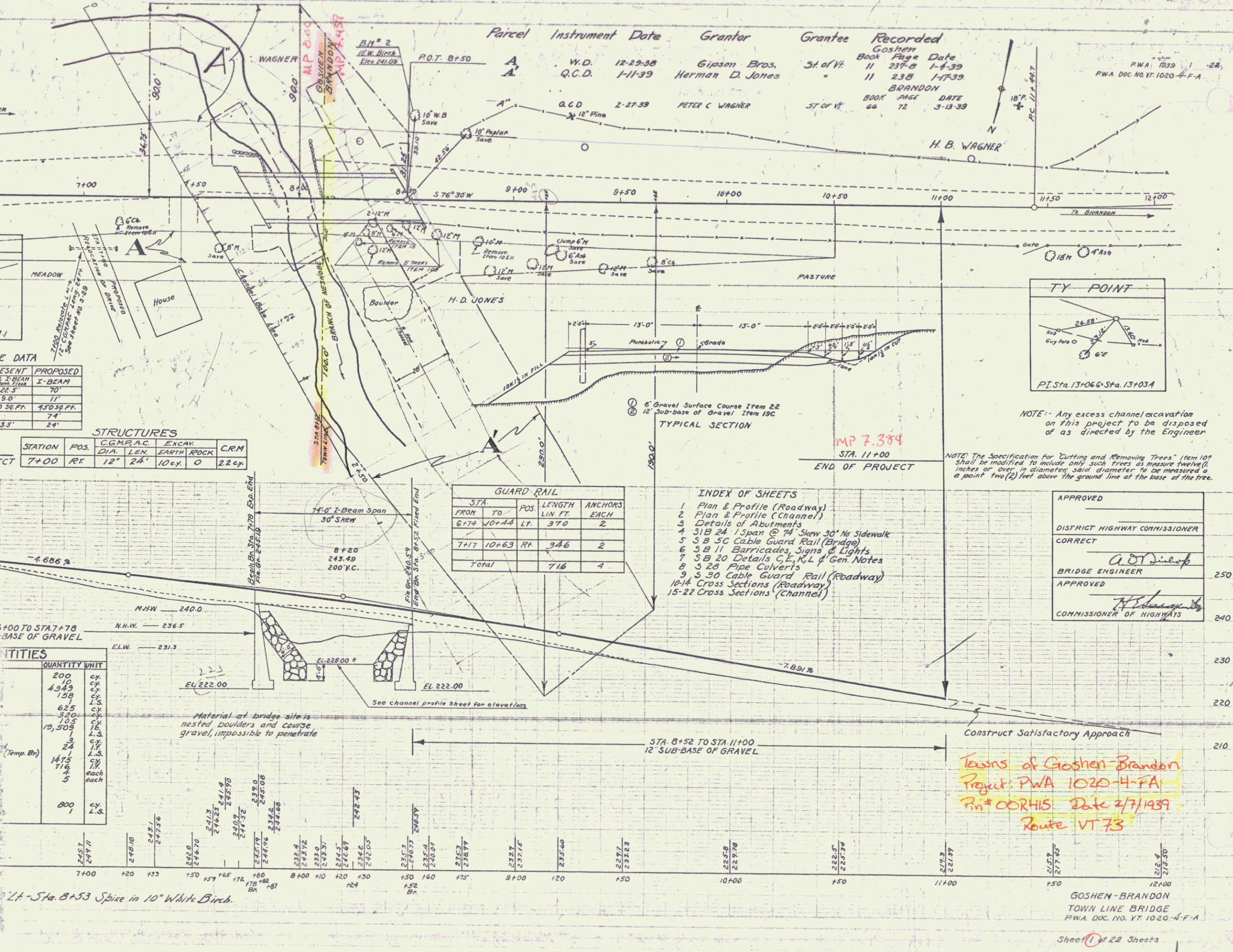
Notes: Sheet 1 of 22 Sheets

Notes: APPROVED

Notes: DISTRICT HIGHWAY COMMISSIONER CORRECT

Notes: BRIDGE ENGINEER APPROVED

Notes: COMMISSIONER OF HIGHWAYS



Parcel Instrument Date Grantor Grantee Recorded

Parcel	Instrument	Date	Grantor	Grantee	Recorded
W.D.	12-29-38	Gipson Bros.	St. of Vt.	Goshen	Book Page Date
A	1-11-39	Herman D. Jones	"	"	11 237-a 1-4-39
A	2-27-39	PETER C. WAGNER	ST. OF VT.	BRANDON	BOOK PAGE DATE
					60 72 3-13-39

NOTE: Any excess channel excavation on this project to be disposed of as directed by the Engineer

NOTE: The Specification for "Cutting and Removing Trees" (Item 105) shall be modified to include only such trees as measure twelve (12) inches or over in diameter, solid diameter, to be measured at a point two (2) feet above the ground line at the base of the tree.

APPROVED

DISTRICT HIGHWAY COMMISSIONER CORRECT

BRIDGE ENGINEER APPROVED

COMMISSIONER OF HIGHWAYS

GOSHEN-BRANDON TOWN LINE BRIDGE PWA. DOC. NO. VT. 1020-4-F-A

Sheet 1 of 22 Sheets

APPROVED

DISTRICT HIGHWAY COMMISSIONER CORRECT

BRIDGE ENGINEER APPROVED

COMMISSIONER OF HIGHWAYS

GOSHEN-BRANDON TOWN LINE BRIDGE PWA. DOC. NO. VT. 1020-4-F-A

Sheet 1 of 22 Sheets

APPROVED

DISTRICT HIGHWAY COMMISSIONER CORRECT

BRIDGE ENGINEER APPROVED

COMMISSIONER OF HIGHWAYS

GOSHEN-BRANDON TOWN LINE BRIDGE PWA. DOC. NO. VT. 1020-4-F-A