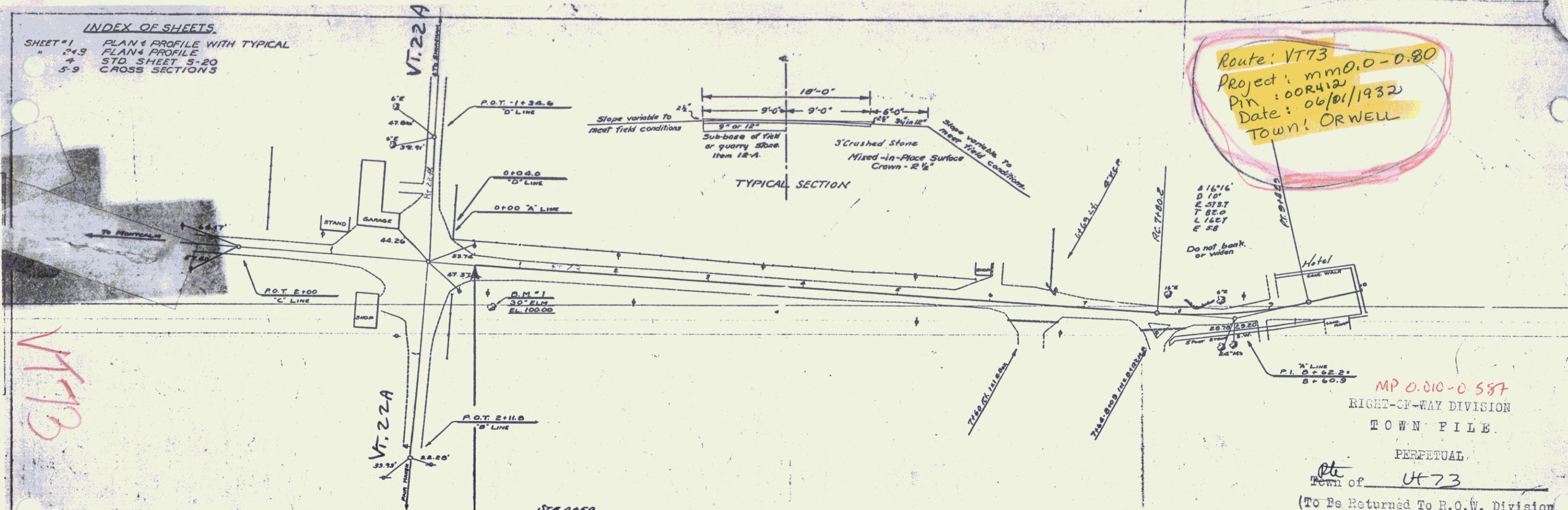
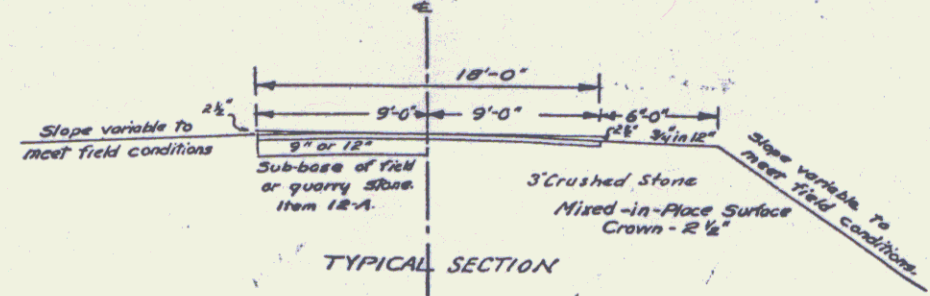
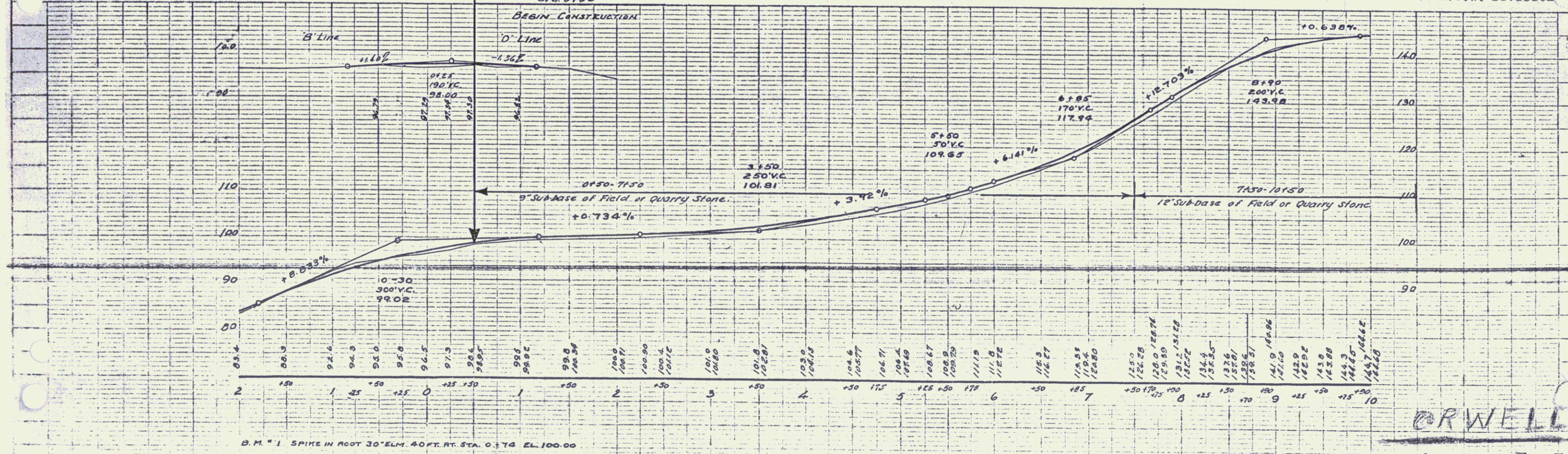


INDEX OF SHEETS.
 SHEET #1 PLAN & PROFILE WITH TYPICAL
 2-3 PLAN & PROFILE
 4 STD. SHEET 5-20
 5-9 CROSS SECTIONS

Route: VT 73
 Project: mm0.0-0.80
 Pin: 00R412
 Date: 06/01/1932
 Town: ORWELL



MP 0.010-0.587
 RIGHT-OF-WAY DIVISION
 TOWN FILE
 PERPETUAL
 Town of VT 73
 (To Be Returned To R.O.W. Division)

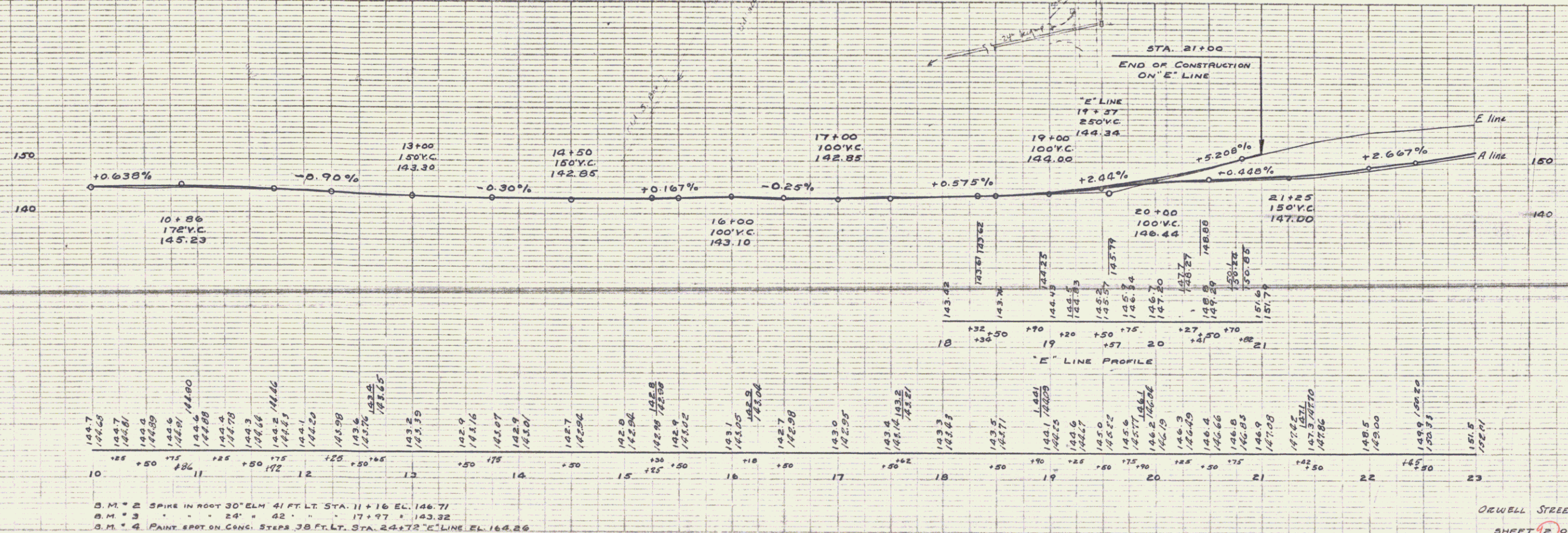
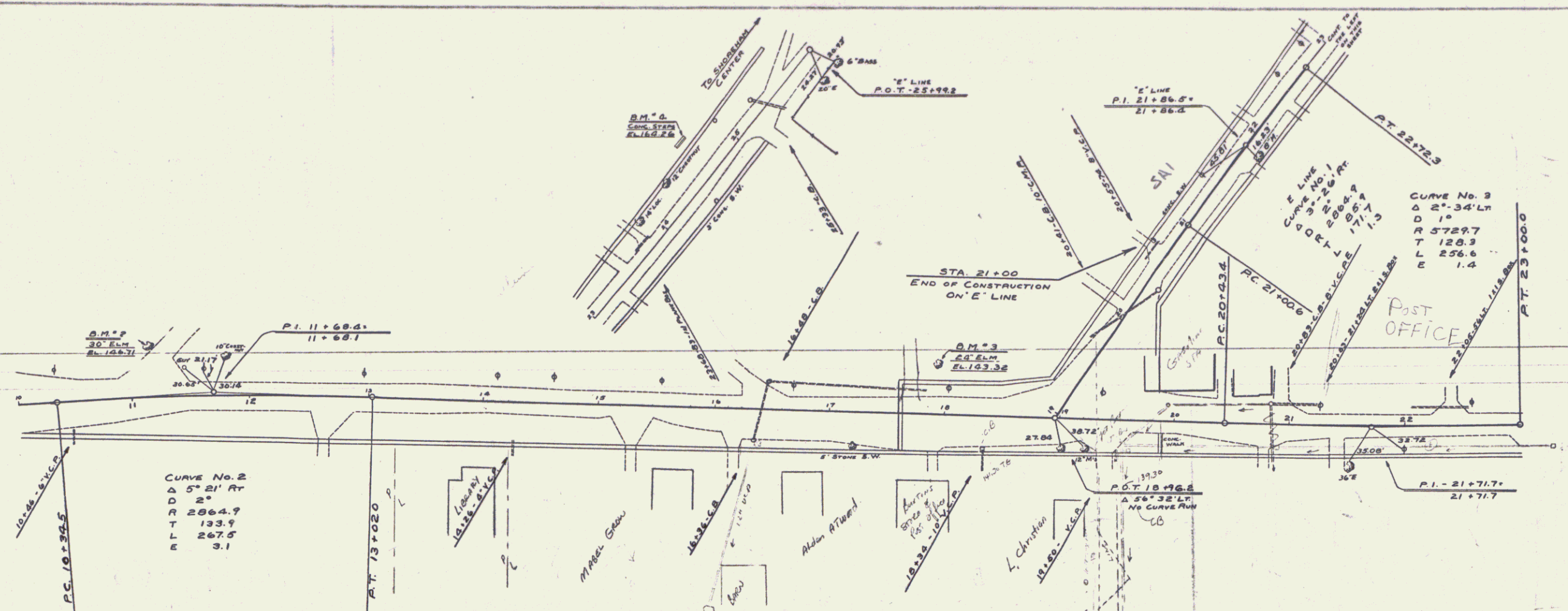


ORWELL

ORWELL STREET PROJECT
 SHEET 1 OF 4

PLAN
 DATE: 6/15/78
 DRAWN BY: [illegible]
 CHECKED BY: [illegible]

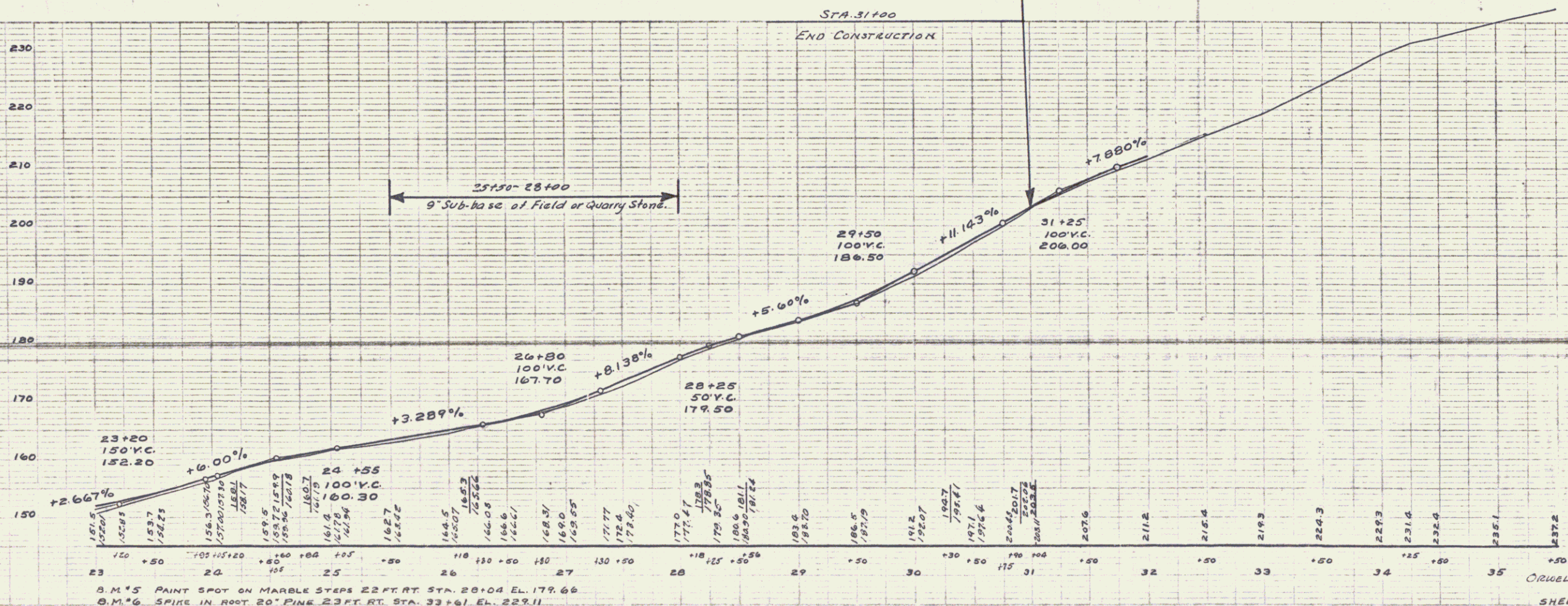
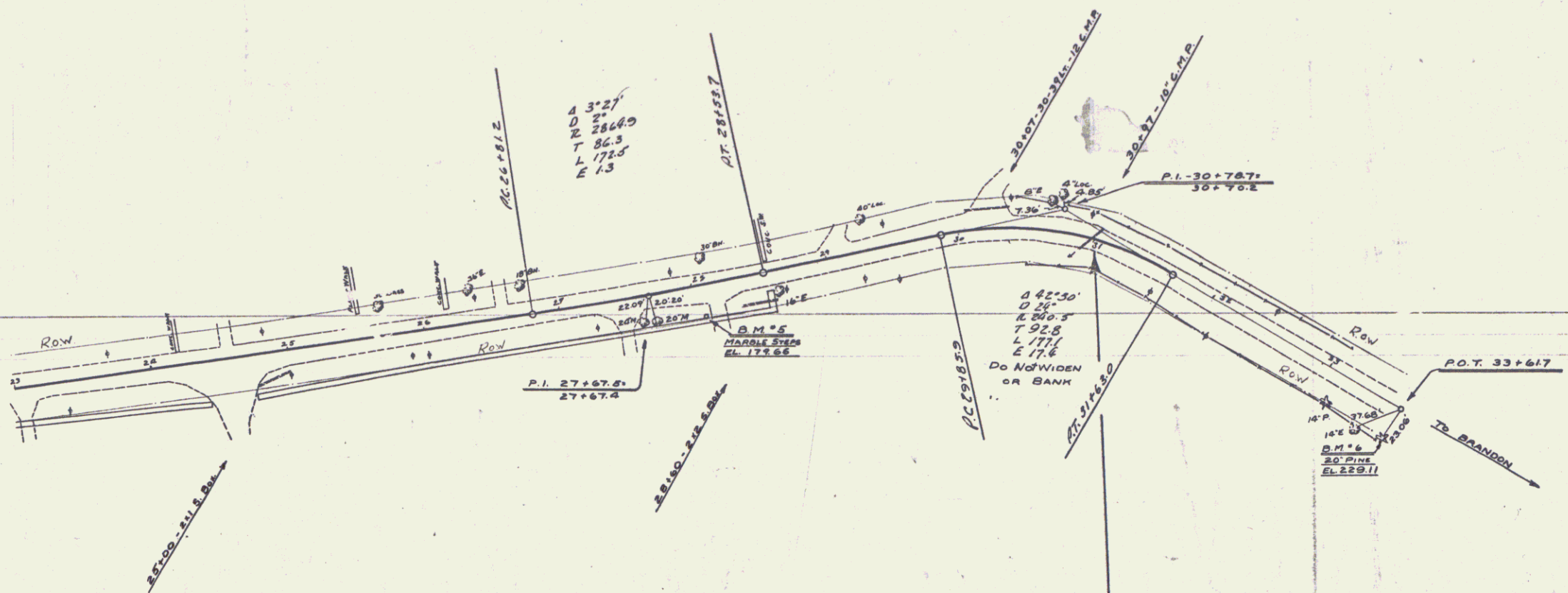
DATE: 6/15/78
 DRAWN BY: [illegible]
 CHECKED BY: [illegible]



B.M. 2 SPIKE IN ROOT 30' ELM 41 FT. LT. STA. 11+16 EL. 146.71
 B.M. 3 " " " 24' " 42' " " 17+97 " 143.32
 B.M. 4 PAINT SPOT ON CONC. STEPS 38 FT. LT. STA. 24+72 " E LINE EL. 166.26

PLAN
 DATE 6/23
 DRAWN BY [illegible]
 CHECKED BY [illegible]
 NOTE: SEE REVISIONS SHEET NO. 1

STA. 23+00 TO 35+00
 ROADWAY
 DATE 6/23
 DRAWN BY [illegible]
 CHECKED BY [illegible]



D.M.#5 PAINT SPOT ON MARBLE STEPS 22 FT. RT. STA. 28+04 EL. 179.66
 D.M.#6 SPIRE IN ROOT 20\"/>