

**INDEX OF SHEETS**

SHEET NO.	1	TITLE PAGE
	2	TYPICAL CROSS-SECTION OF IMPROVEMENT STABILIZED GRAVEL BASE COURSE OF CUTBACK ASPHALT WITH PEA STONE SEAL ITEM 304-B
	3	BANKING AND WIDENING TABLES
	4	QUANTITY SHEET (ITEMS AND DRAINAGE)
	5-7	EARTHWORK SHEETS
	8-14	PLAN AND PROFILE SHEETS
	15	DETAILS OF 6' x 5' R.C. BOX EXTENSION
	16	REINFORCING STEEL SCHEDULE
	17	CONSTRUCTION DETAILS CD (DRAINAGE AND MARKERS)
	18	CONSTRUCTION DETAILS CD-1 (DITCHES)
	19	CONSTRUCTION DETAILS CD-2 (TYPICAL SLOPE GRADING)
	20	STANDARD STRUCTURE SHEET S-40 (BARRICADES, SIGNS & LIGHTS)
	21	STANDARD STRUCTURE SHEET S-48-46 (THREE CABLE GUARD RAIL)
	22	STANDARD STRUCTURE SHEET S-53-48 (P.C. R.C.P. DROP INLET)
	23-39	CROSS SECTIONS
	40-41	CHANNEL SECTIONS

STANDARD STRUCTURE SHEET APPROVED BY THE CHIEF ENGINEER, VERMONT STATE DEPARTMENT OF HIGHWAYS.

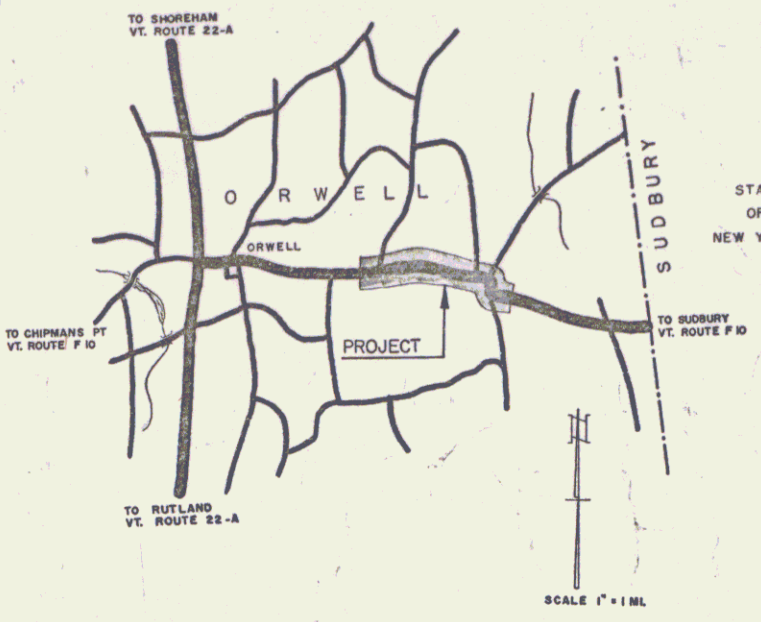
S-40 JUNE 10, 1950

**STATE OF VERMONT  
DEPARTMENT OF HIGHWAYS**

**PROPOSED IMPROVEMENT**

SECONDARY PROJECT

**TOWN OF ORWELL  
COUNTY OF ADDISON  
VERMONT ROUTE F10  
ORWELL-SUDBURY ROAD**



PROJECT NAME & NUMBER	TYPE	PAVEMENT AREA
ORWELL S 241 (1)	STABILIZED GRAVEL BASE COURSE OF CUTBACK ASPHALT	18,440 S.Y.
RECORD PLANS		
MATERIALS		
SUB BASE OF GRAVEL WHITE PIT, ORWELL	REINFORCING STEEL VT. STRUCT. ST. CO., BURLINGTON	
CRUSHED GRAVEL WHITE PIT, ORWELL	R.C.P. FEDERAL PIPE CO., GLENS FALLS, N.Y.	
CUTBACK ASPHALT SOCONY VACUUM, E. PROV, R.I.	A.C.C.G.M.P. NEW ENG. METAL CULVERT CO., BOSTON, MASS.	
SAND FOR SEAL CLARK & HAYNES, POULTNEY	CABLE FOR GUARD RAIL AMERICAN STEEL & WIRE CO., N.Y., N.Y.	
PEASTONE FOR SEAL Vt. MARBLE CO., FLORENCE	WHITE G.R. PAINT BRADLEY LABS., BRATTLEBORO	
CEMENT LONE STAR PORT. CEM. CO., HUDSON, N.Y.	BLACK G.R. PAINT FRANKLIN PAINT CO., FRANKLIN MASS.	
CONC. AGGREGATE W.C. MURPHY, BURLINGTON		
CONTRACTOR SHATTUCK, BURNETT & GONYO, BURLINGTON	CONTRACT DATED APRIL 16, 1954	
RESIDENT ENGR. R. FUNK	CONTRACT STARTED MAY 5, 1954	
INSPECTORS A. DELANO	CONTRACT COMPLETED OCTOBER 19, 1954	
RECORD PLANS R. FUNK 7-1-55	CONTRACT ACCEPTED OCTOBER 19, 1954	

BEGINNING AT A POINT APPROXIMATELY 979.4 FEET EAST OF THE INTERSECTION OF VERMONT ROUTES 22-A AND F-10 AND EXTENDING EASTERLY 8232.8 FEET

LENGTH OF PROJECT 8232.8 FEET = 1.559 MILES

*Route: VT 73  
Project: S241(1)  
Plan: 00R41  
Date: 02/08/1954*



RIGHT-OF-WAY DIVISION  
TOWN FILE  
PERPETUAL  
Plan No. of VT 73  
*(To Be Returned to R.O.W. Division)*

PROJECT No. 1559 MILE LENGTH 1.559  
APPROVER R. Funk DATE 7-1-55  
TYPE Stabilized Base Course of Cutback Asphalt  
CONTRACTOR Shattuck, Burnett & Gonyo YEAR 1954  
LOCATION Orwell - Sudbury Road

ORWELL S 241 (1)	SHATTUCK, BURNETT & GONYO
RECORD PLANS - R. FUNK	7-1-55
CONSTR. COMPLETED -	OCT. 19, 1954

**SCALES**

TITLE	1" = 400'
TYPICAL	1" = 8'
PLAN	1" = 80'
PROFILE HORIZONTAL	1" = 80'
PROFILE VERTICAL	1" = 10'
CROSS-SECTIONS	1" = 8'

APPROVED <u>R. Funk</u> CONSTRUCTION ENGINEER DATE <u>2-1-54</u>	APPROVED <u>R. Funk</u> SECONDARY ENGINEER DATE <u>2-1-54</u>	APPROVED <u>R. Funk</u> DISTRICT ENGINEER DATE <u>2-1-54</u>	APPROVED <u>R. Funk</u> DISTRICT ENGINEER DATE <u>2-1-54</u>	APPROVED <u>R. Funk</u> DISTRICT ENGINEER DATE <u>2-1-54</u>
--	---	--	--	--

DEPARTMENT OF COMMERCE  
BUREAU OF PUBLIC ROADS

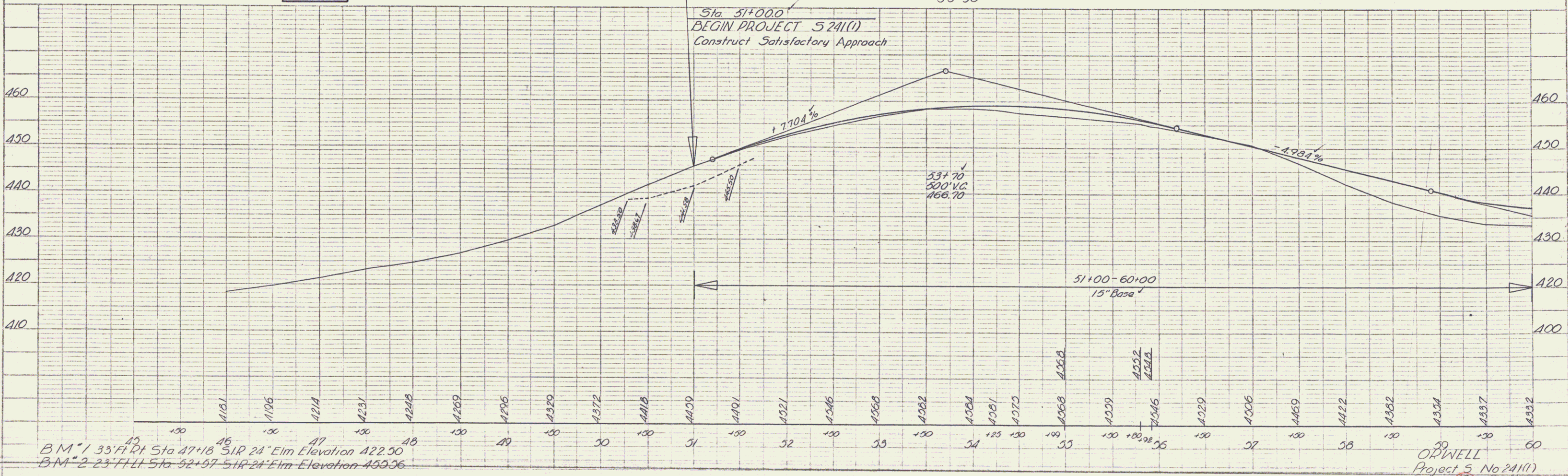
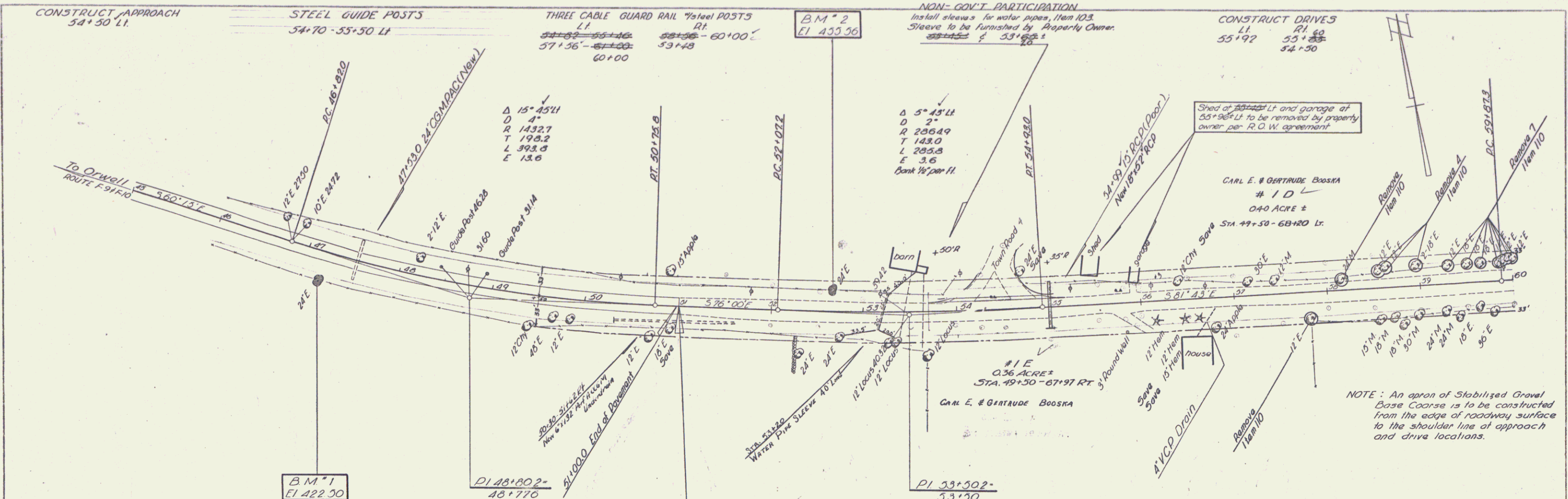
APPROVED \_\_\_\_\_  
DISTRICT ENGINEER DATE \_\_\_\_\_

PROJECT S NO. 241 (1)  
SHEET 1 OF 41 SHEETS

**VT 73**

PLAN  
 DRAWN BY: A. Lavin  
 DATE: 12-31-34  
 CHECKED BY: Palmer  
 DATE: 2-22-35

PROFILE  
 DRAWN BY: A. Lavin  
 DATE: 12-31-34  
 CHECKED BY: Palmer  
 DATE: 2-22-35



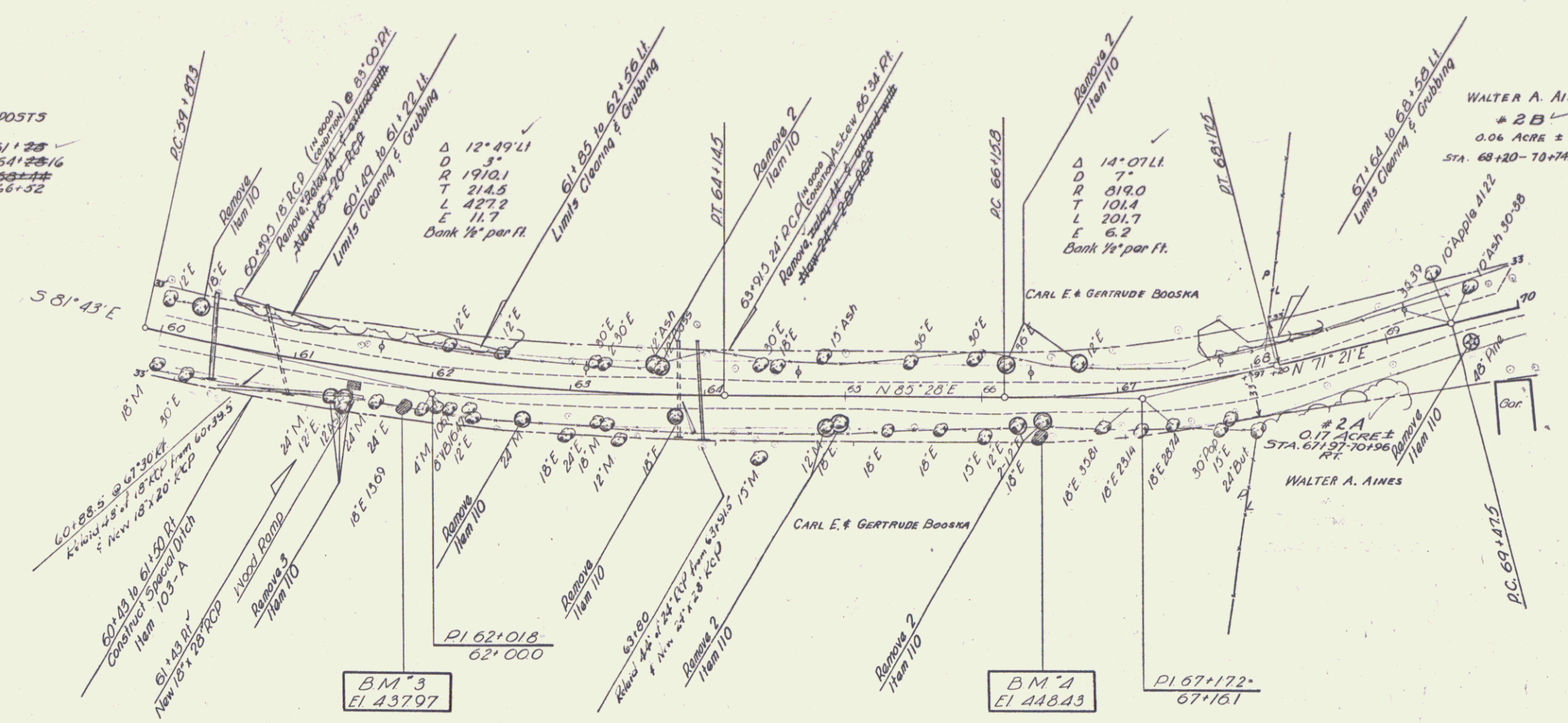
B.M. 1 33' RT Sta 47+18 51R 24" Elm Elevation 422.50  
 B.M. 2 23' FLL Sta 52+57 51R 24" Elm Elevation 459.36

OPWELL  
 Project 5 No 241(1)  
 Sheet 8 of 41

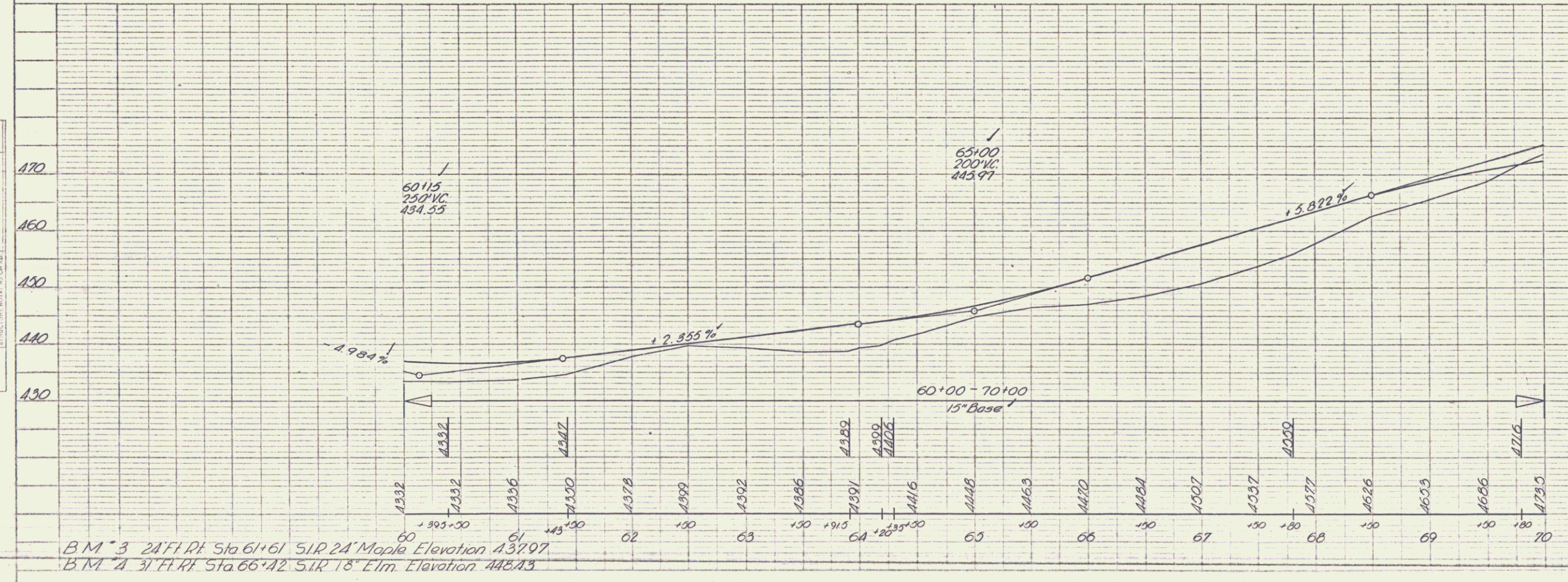
CONSTRUCT DRIVES  
 LT RI  
 63+60 61+43 ✓  
 63+50

THREE CABLE GUARD RAIL \*Standard POSTS  
 RI  
 55+85 to 61+35  
 60+00 to 61+25 ✓  
 63+60 to 64+35 96.63 145 to 64+25/16  
 65+34 to 67+96 96 65+72 to 66+32

PLAN  
 DRAWN BY: HAVIN  
 CHECKED BY: PALMER  
 DATE: 2-3-36



PROFILE  
 DRAWN BY: A. L. PALMER  
 CHECKED BY: PALMER  
 DATE: 2-3-36



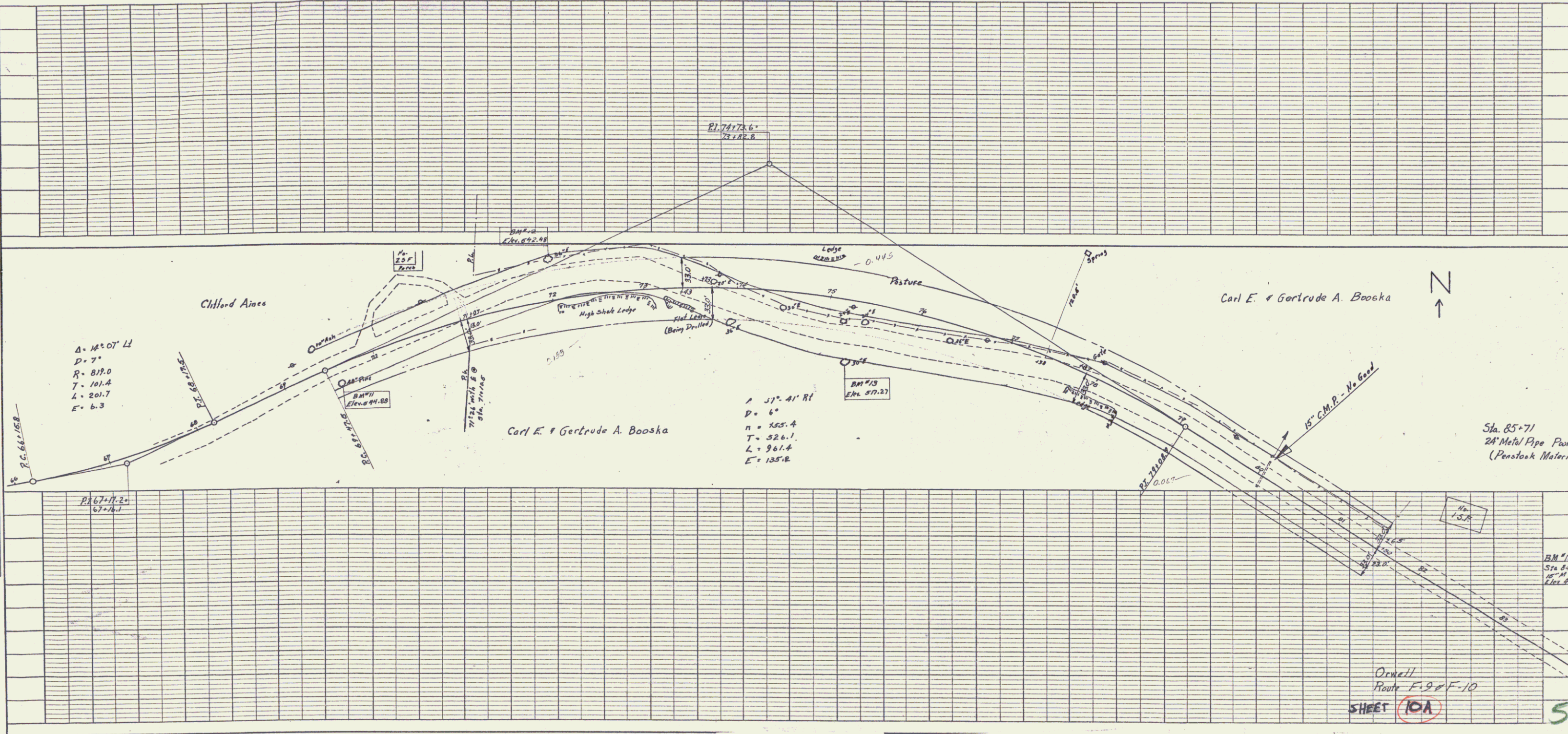
B.M. 3 24' H. P.I. Sta 64+61 S.I.P. 24' Maple Elevation 437.97  
 B.M. 4 31' H. P.I. Sta 66+42 S.I.P. 18' Elm Elevation 448.43

ORWELL  
 Project No. 241(1)  
 Sheet 2 of 41



PLAN	DATE
DESIGNED	
PLANNED	
NOTED	
BY	
NO.	

PROFILE	DATE
DESIGNED	
PLANNED	
NOTED	
BY	
NO.	



$\Delta = 142^{\circ} 07' 12''$   
 $R = 817.0$   
 $L = 201.7$   
 $E = 6.3$

$\Delta = 117^{\circ} 41' 11''$   
 $D = 6''$   
 $H = 455.4$   
 $L = 326.1$   
 $T = 961.4$   
 $E = 135.8$

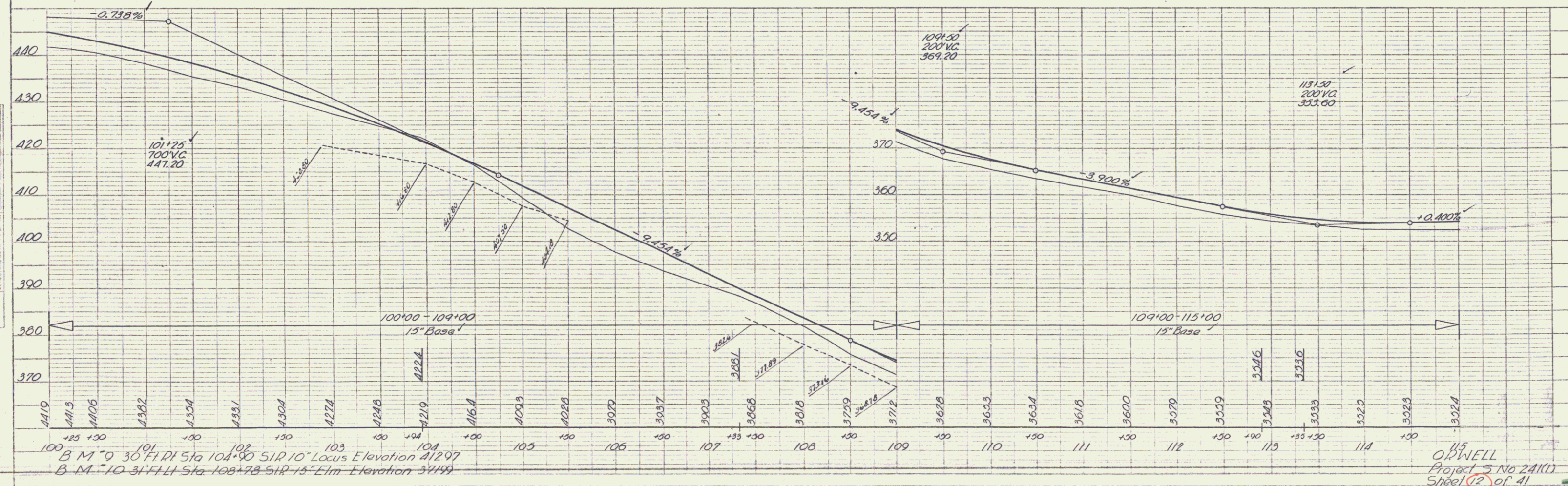
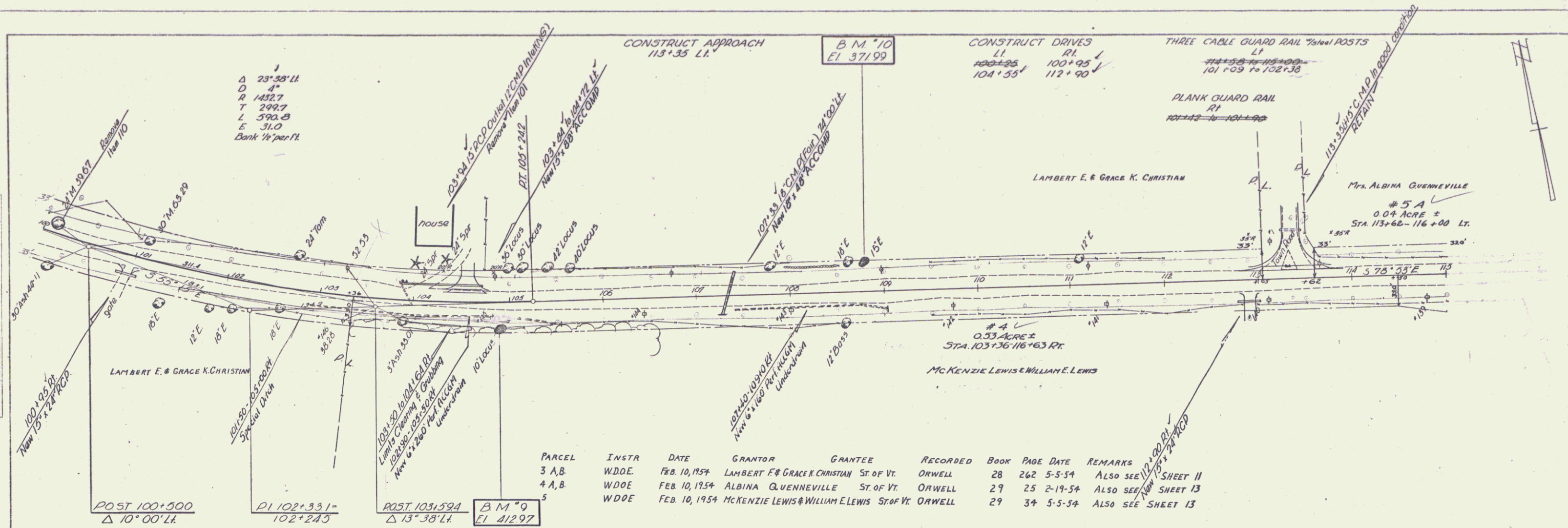
Orrell  
 Route F-9 & F-10  
 SHEET **10A**

5



PLAN  
 DRAWN BY A. Palmer  
 DATE 2-28  
 CHECKED BY J. Palmer  
 DATE 2-28

PROFILE  
 DRAWN BY A. Palmer  
 DATE 2-28  
 CHECKED BY J. Palmer  
 DATE 2-28



B.M. 9 30 FT. STATION 104+90 S.I.R. 10" LOCUS ELEVATION 412.97  
 B.M. 10 31 FT. STATION 108+78 S.I.R. 15" ELM. ELEVATION 371.99

ORWELL  
 Project No 241(1)  
 Sheet 12 of 41

DATE	12-31
SCALE	1" = 40'
PROJECT	ROAD
DESIGNED BY	A. LOUIE
CHECKED BY	F. PALMER
DATE	2-52
SCALE	1" = 40'
PROJECT	ROAD
DESIGNED BY	A. LOUIE
CHECKED BY	F. PALMER
DATE	2-52
SCALE	1" = 40'
PROJECT	ROAD
DESIGNED BY	A. LOUIE
CHECKED BY	F. PALMER

DATE	12-31
SCALE	1" = 40'
PROJECT	ROAD
DESIGNED BY	A. LOUIE
CHECKED BY	F. PALMER
DATE	2-52
SCALE	1" = 40'
PROJECT	ROAD
DESIGNED BY	A. LOUIE
CHECKED BY	F. PALMER
DATE	2-52
SCALE	1" = 40'
PROJECT	ROAD
DESIGNED BY	A. LOUIE
CHECKED BY	F. PALMER

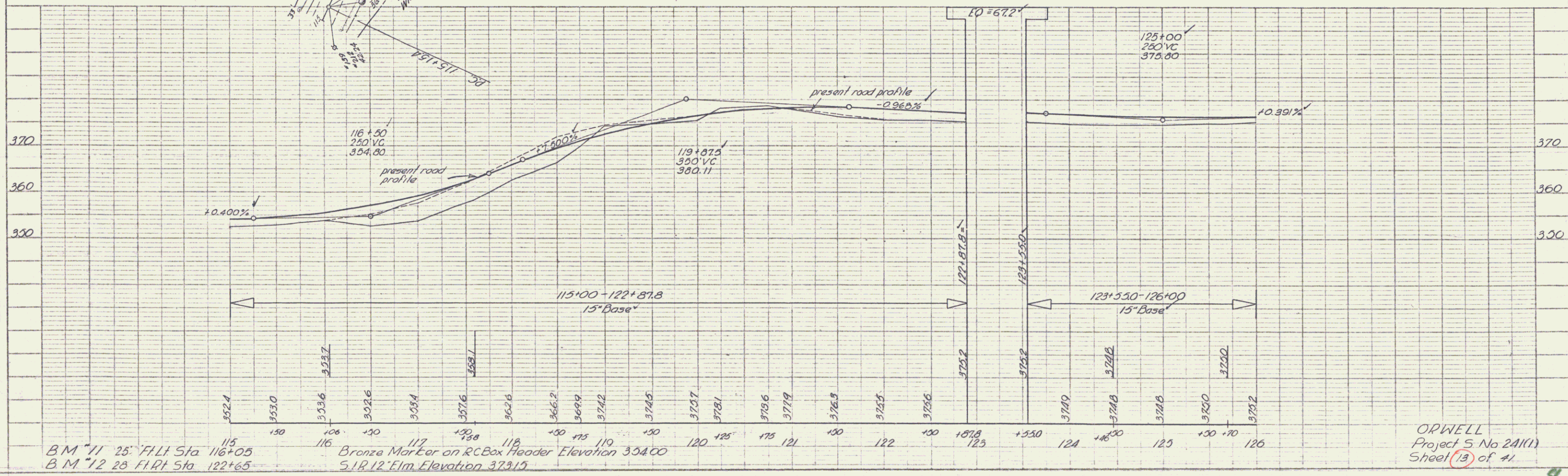
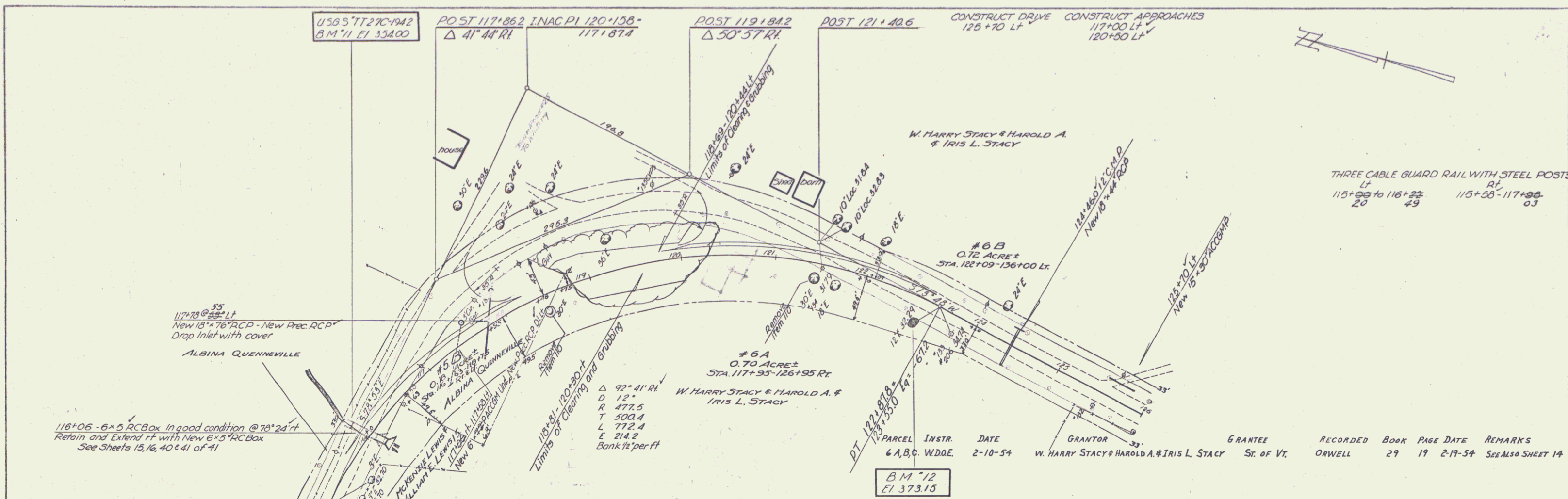
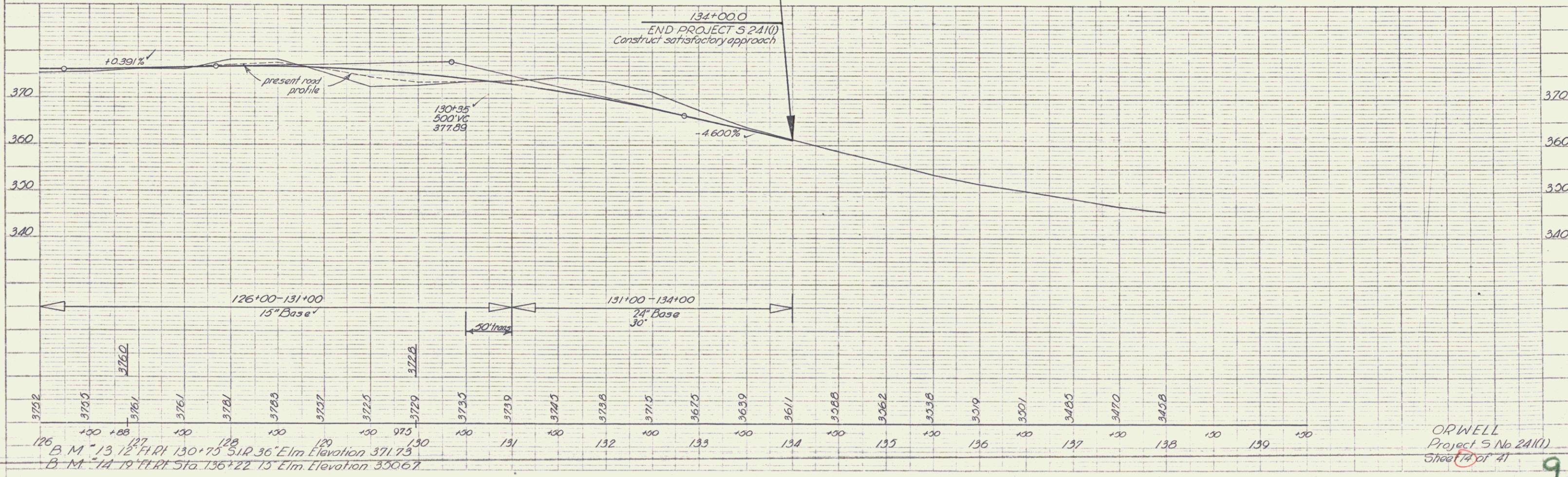
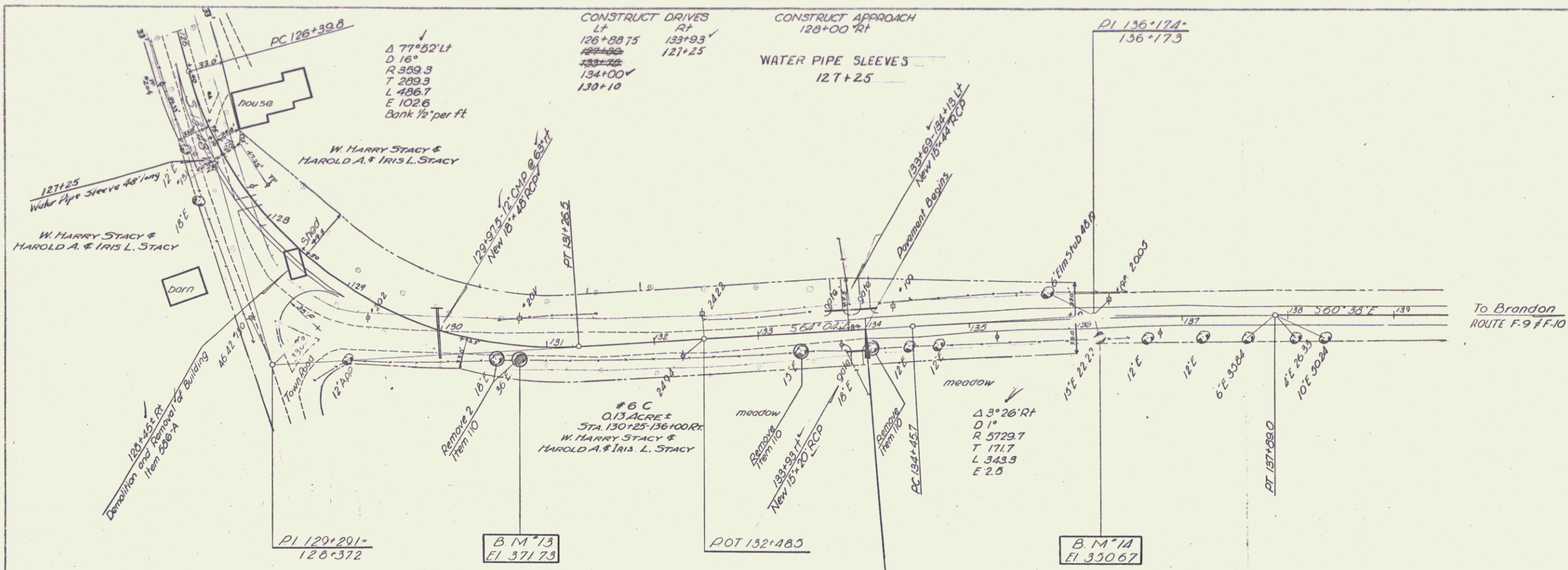


PLATE 1 - PLAN PROFILE OF ROAD  
 DRAWN BY: [Name]  
 CHECKED BY: [Name]

PLAN  
 SHEET NO. 12-31  
 PROJECT NO. 2-22  
 DATE 12-31-02  
 DRAWN BY A. L. Palmer  
 CHECKED BY [Signature]  
 TITLE ROAD RECONSTRUCTION

PROFILE  
 SHEET NO. 12-32  
 PROJECT NO. 2-22  
 DATE 12-31-02  
 DRAWN BY A. L. Palmer  
 CHECKED BY [Signature]  
 TITLE ROAD RECONSTRUCTION



ORWELL  
 Project S No 24(1)  
 Sheet 14 of 41  
 9