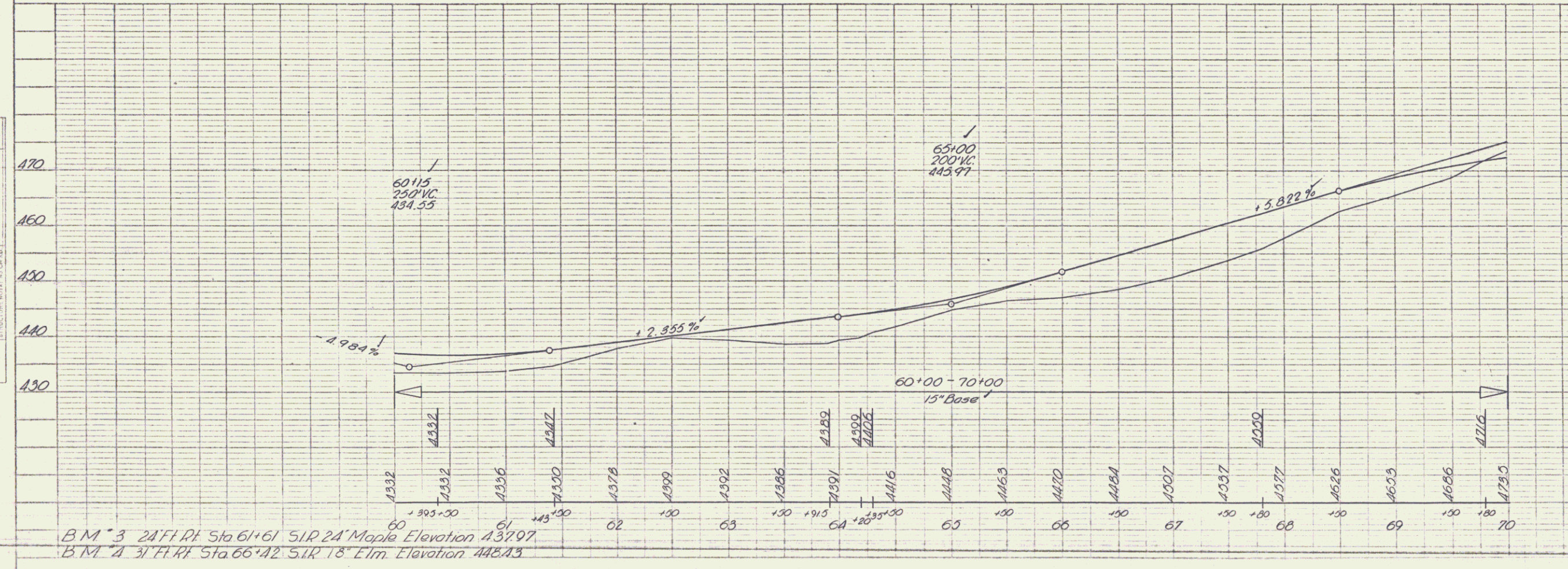
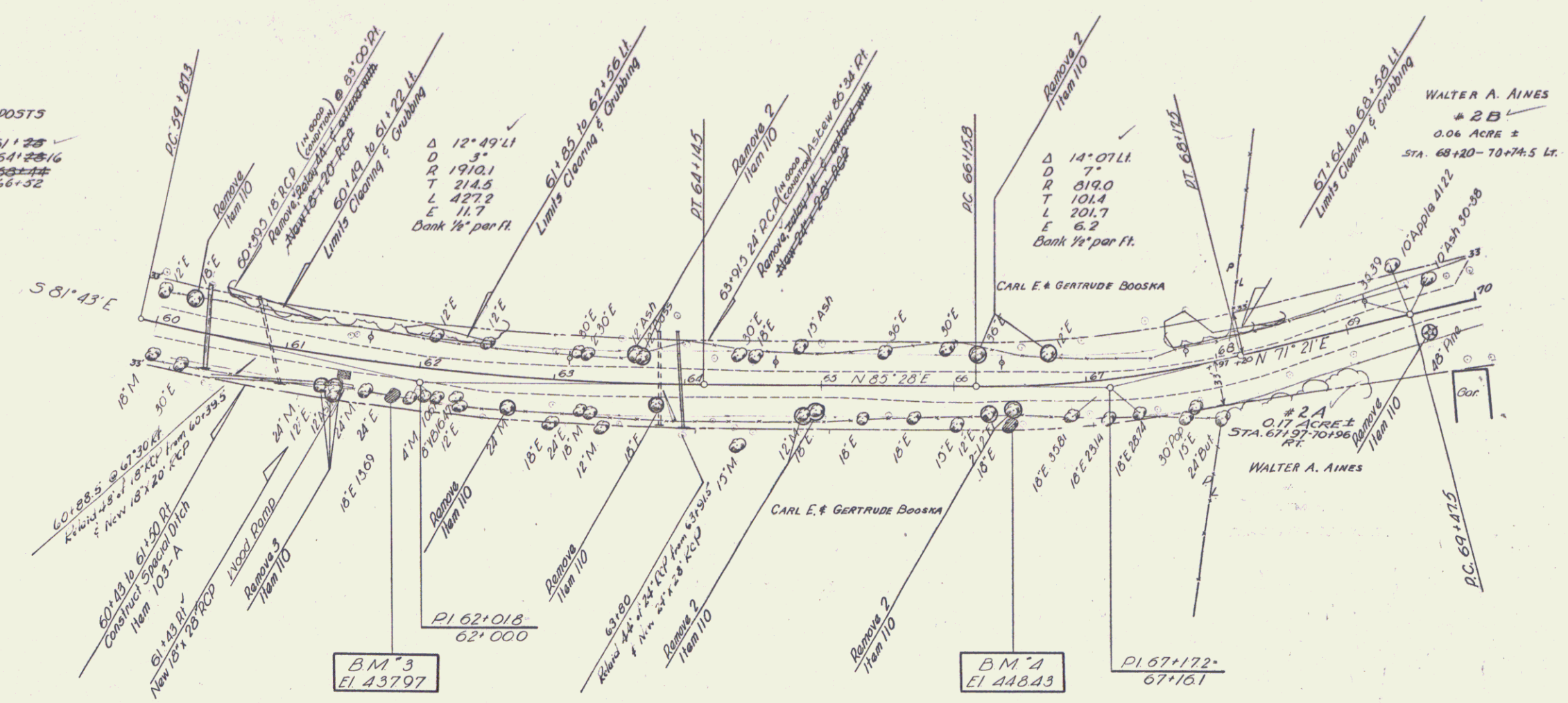


CONSTRUCT DRIVES
 L¹ RI
 63+60 61+43 ✓
 63+50

THREE CABLE GUARD RAIL *Yoked POSTS
 RI
 55+85 to 61+35
 60+00 to 61+25 ✓
 63+60 to 64+35 96.63 145 to 64+25/16
 65+34 to 67+96 96 65+72 to 66+32

PLAN
 DRAWN BY: HAVIN
 CHECKED BY: PALMER
 DATE: 2-32

PROFILE
 DRAWN BY: A. L. Palmer
 CHECKED BY: Palmer
 DATE: 2-32



B.M. 3 24 FT. RI Sta 64+61 S.I.P. 24 Maple Elevation 437.97
 B.M. 4 31 FT. RI Sta 66+42 S.I.P. 18 Elm Elevation 448.43

ORWELL
 Project S. No. 241(1)
 Sheet 2 of 41