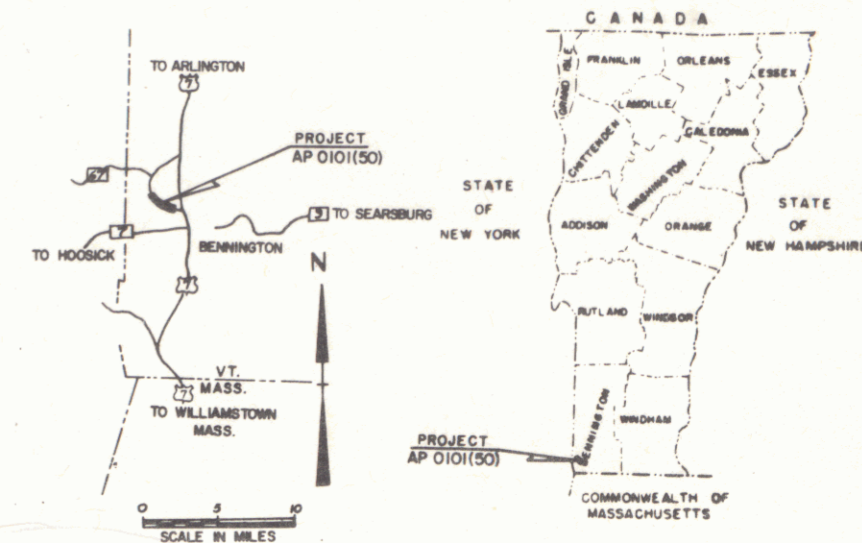


STATE OF VERMONT
DEPARTMENT OF HIGHWAYS
PROPOSED IMPROVEMENT

R.O.W. PLANS

TOWN OF BENNINGTON
COUNTY OF BENNINGTON
VERMONT ROUTE 67-A
BENNINGTON TO NORTH-BENNINGTON

BEGINNING AT A POINT APPROXIMATELY 0.0663 MILES NORTH-
WESTERLY OF THE INTERSECTION OF U.S. ROUTE 7 AND VERMONT
ROUTE 67-A, AND EXTENDING NORTH WESTERLY 0.795 MILES
LENGTH - 4,438 FEET = .840 MILES



ADT 1970
ADT 1990
DHW 1990
D T V

D.N. : 00R409

MP 0.907
VT. 67-A 56+76
END PROJECT | AP 0101(50)
CONSTRUCT SATISFACTORY APPROACH

MP 0.066
VT. 67-A 12+38
BEGIN PROJECT | AP 0101(50)
CONSTRUCT SATISFACTORY APPROACH



CONVENTIONAL SIGNS

POINT OF ACCESS	X
LIMITS OF ACCESS	—
COUNTY LINE	—
TOWN LINE	—
FENCE LINE	—
STONE WALL	—
UNFENCED PROPERTY	—
GUARD RAIL	—
TRAVEL WAY	—
RAIL	—
REL. ALL.	—
CEN. E.	—
SUB. E.	—
CULVERT	—
DROP BULET	—
TROLLEY POLE	—
POWER POLE	—
TELEPHONE POLE	—
TREES	—
HEADS	—
F.A. CONSTRUCTION IDENTIFICATION SIGNS	A

SLOPE RIGHTS

GROUND ELEVATION

GRADE ELEVATION

CURVE DATA

DEFLECTION OF ANGLE	A
DEGREE OF CURVE	D
RADIUS OF CURVE	R
TANGENT DISTANCE	T
LENGTH OF CURVE	L
EXTERNAL DISTANCE	E
POINT OF INTERSECTION	P.I.
POINT OF CURVE	P.C.
POINT OF TANGENT	P.T.
POINT ON TANGENT	P.O.T.
POINT ON SUB-TANGENT	P.O.S.T.
R.O.W. LIMITS	—

FOR RIGHT OF WAY DETAILS,
SEE RIGHT OF WAY PLANS FOR THIS PROJECT.

RIGHT-OF-WAY DIVISION
TOWN FILE
PERPETUAL
SOUTH OF VT 67A
(To Be Returned To R.O.W. Division)

THESE PLANS ARE SUBJECT TO SUCH REVISIONS AS MAY BE
REQUIRED BY THE BUREAU OF PUBLIC ROADS OR THE COMMISSIONER
OF HIGHWAYS.
CONSTRUCTION IS TO BE CARRIED ON IN ACCORDANCE WITH
THESE PLANS AND THE STANDARD SPECIFICATIONS FOR HIGHWAY AND BRIDGE
CONSTRUCTION DATED APRIL 1964, AS APPROVED BY THE BUREAU OF
PUBLIC ROADS ON OCTOBER 12, 1964, INCLUDING ALL SUBSEQUENT
APPROVED REVISIONS AND SUCH REVISED SPECIFICATIONS AND SPECIAL
PROVISIONS AS ARE INCORPORATED IN THESE PLANS.

APPROVED <i>[Signature]</i> R.O.W. DIRECTOR DATE 6-29-70	APPROVED <i>[Signature]</i> DISTRICT ENGINEER DATE 4/9/70	APPROVED <i>[Signature]</i> CONSTRUCTION ENGINEER DATE 4/14/70	APPROVED <i>[Signature]</i> BRIDGE ENGINEER DATE	APPROVED <i>[Signature]</i> HIGHWAY ENGINEER DATE 4/15/70	APPROVED <i>[Signature]</i> ASSY. CHIEF ENGINEER DATE APRIL 14 1970	APPROVED <i>[Signature]</i> CHIEF ENGINEER DATE 4/14/70
--	---	--	--	---	---	---

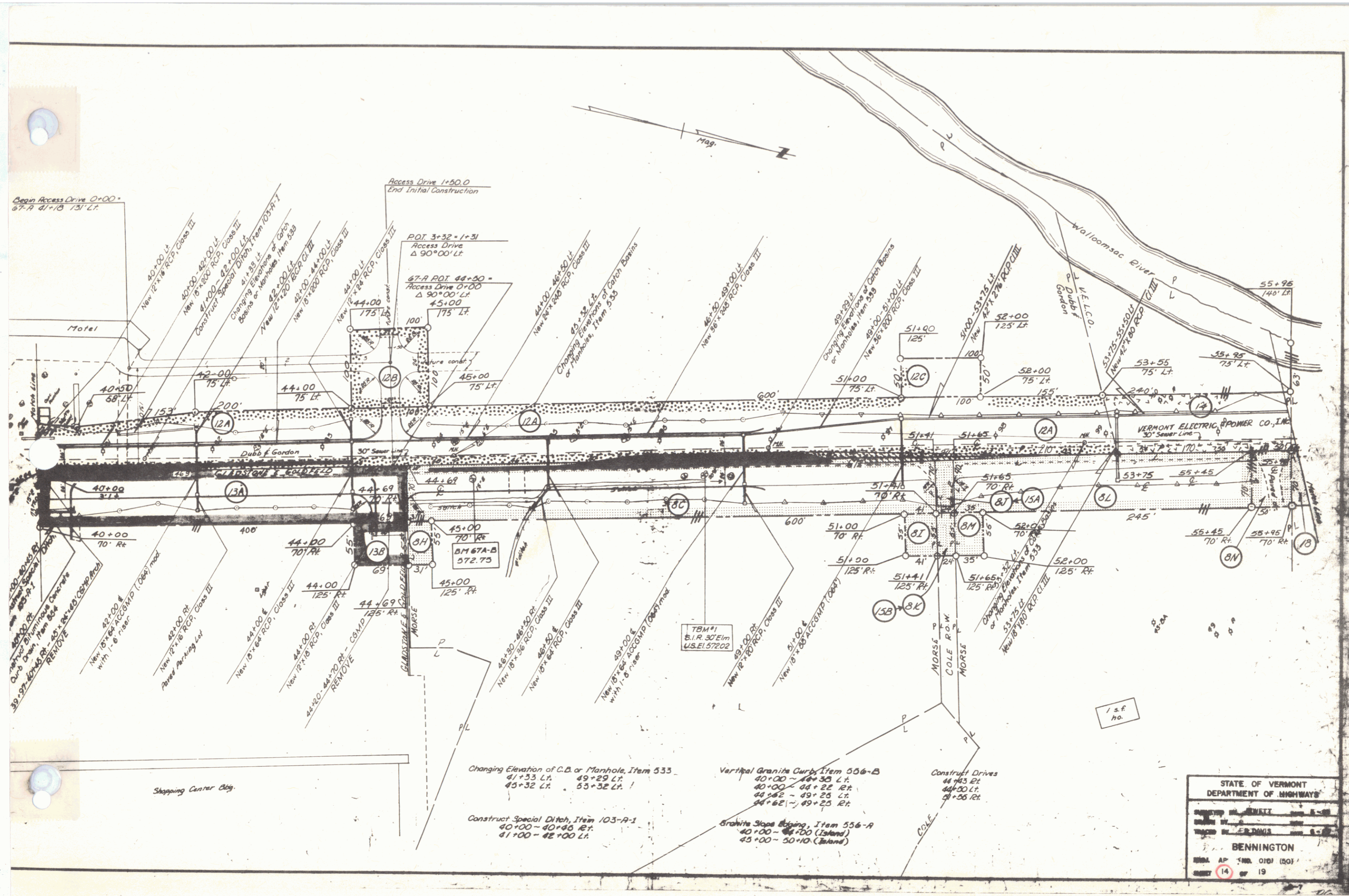
DEPARTMENT OF COMMERCE
BUREAU OF PUBLIC ROADS

APPROVED _____ DATE _____

DIVISION ENGINEER _____ DATE _____

PROJECT AP NO. 0101(50)

SHEET 1 OF 19 SHEETS



Begin Access Drive 0+00
67-A 41+18 131' Lt.

Access Drive 1+50.0
End Initial Construction

Hotel

30+97+00 RCP
Curb Drain, Item 504
REMOVE

22+00 &
New 18' x 24' RCP (Class III)
with 1-6 riser

22+00 Rf
New 18' x 18' RCP, Class III

44+00 Rf
New 18' x 18' RCP, Class III

44+00 Rf
New 18' x 18' RCP, Class III

44+00 Rf
New 18' x 18' RCP, Class III

44+00 Rf
New 18' x 18' RCP, Class III

44+00 Rf
New 18' x 18' RCP, Class III

44+00 Rf
New 18' x 18' RCP, Class III

44+00 Rf
New 18' x 18' RCP, Class III

44+00 Rf
New 18' x 18' RCP, Class III

44+00 Rf
New 18' x 18' RCP, Class III

44+00 Rf
New 18' x 18' RCP, Class III

44+00 Rf
New 18' x 18' RCP, Class III

44+00 Rf
New 18' x 18' RCP, Class III

44+00 Rf
New 18' x 18' RCP, Class III

Shopping Center Bldg.

Changing Elevation of C.B. or Manhole, Item 533
41+33 Lt. 49+29 Lt.
45+32 Lt. 53+32 Lt.

Construct Special Ditch, Item 103-A-1
40+00 - 40+40 Rt.
41+00 - 42+00 Lt.

Vertical Granite Curbs, Item 556-B
40+00 - 44+35 Lt.
44+00 - 44+22 Rt.
44+22 - 49+25 Lt.
44+22 - 49+25 Lt.

Granite Slope Easing, Item 556-A
40+00 - 44+00 (Island)
45+00 - 50+10 (Island)

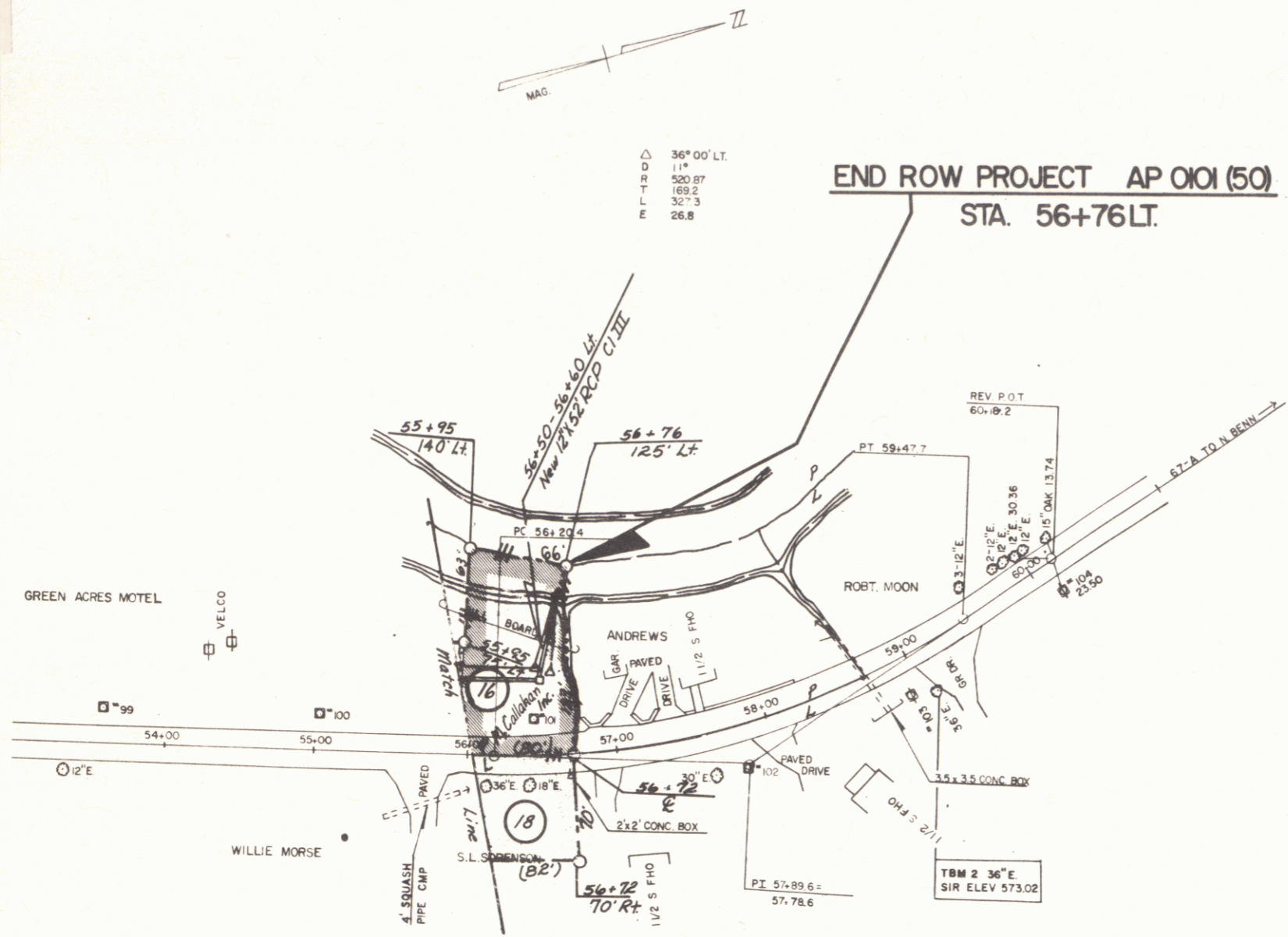
Construct Drives
44+43 Lt.
44+50 Lt.
44+55 Lt.

STATE OF VERMONT
DEPARTMENT OF HIGHWAYS

DESIGNED BY: [Signature]
DRAWN BY: [Signature]

BENNINGTON

SHEET 14 OF 19



SURVEYED BY _____	DATE _____
DRAWN BY _____	DATE _____
TRACED BY S.SANDS	DATE 8/20/69
BENNINGTON RTE 67-A	
PROJ. AP NO. 0101 (50)	
SHEET 15	OF 19