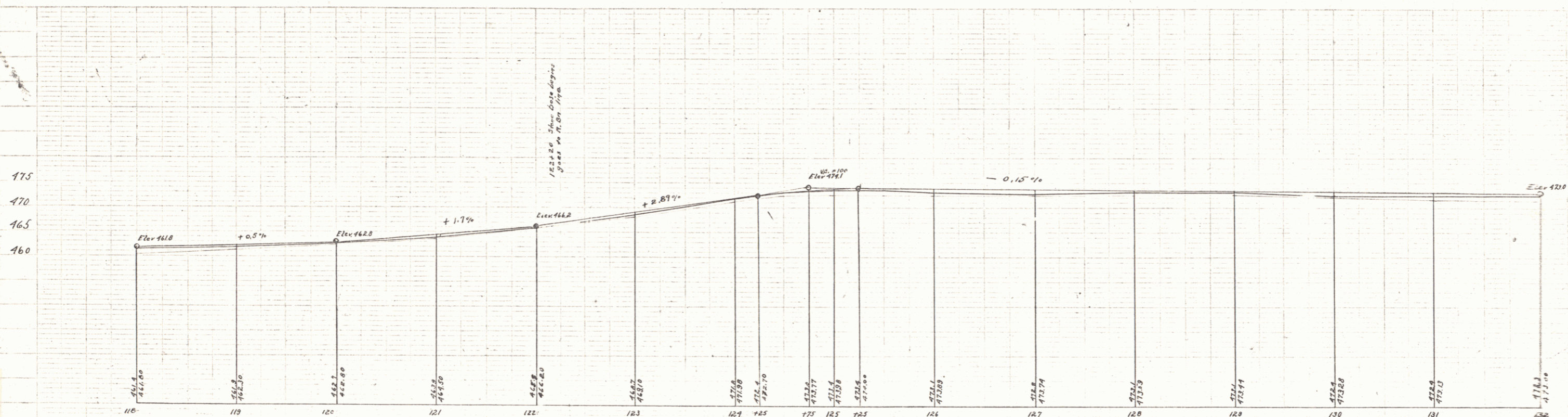
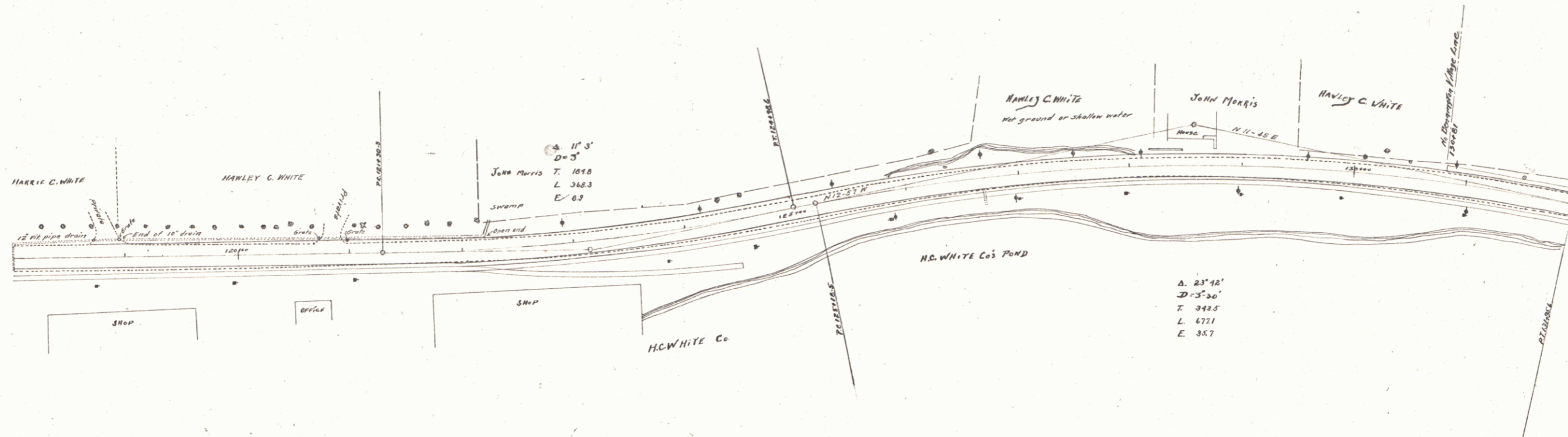


GUARD RAIL REQUIRED  
ON LEFT  
Sta. 126+00 To Sta. 127+10 Length 243'

NEW CULVERTS REQUIRED  
Sta. 127+00  
2'x2' Reinforced Concrete 38.5 ft  
1'-2" Concrete 5.0 cu. yds  
1'-3" Steel 0.1  
Steel 0.4 lbs

True Meridian



B.M. Front S.E. corner of window shell White Co. mill 52' right of Sta. 118+32, Elev. 441.34  
B.M. S.E. corner of foundation stone of mill 315' right of Sta. 121+71, Elev. 465.90  
B.M. Spike in elm 28' left of Sta. 126+37, Elev. 475.43  
B.M. Spike in elm 21' left of Sta. 130+27, Elev. 473.15

All Crown elevations to be lowered 0.60 ft.