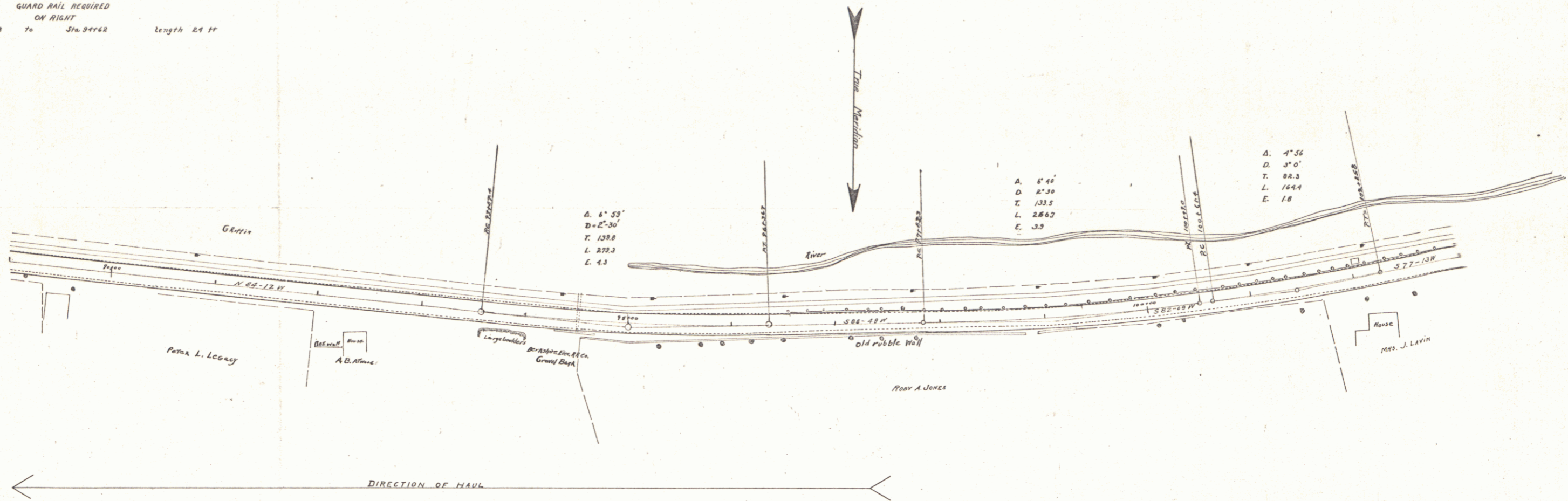


GUARD RAIL REQUIRED  
ON RIGHT  
Sta. 39+30 to Sta. 39+42 Length 12 FT



D.M. spike in cut 17' right of Sta. 09+53, Elev. 463.51  
D.M. spike in pile 25.6' left of Sta. 95+24, Elev. 464.58  
D.M. spike in dump 10.5' right of Sta. 101+47, Elev. 462.81

All crown elevations to be lowered 0.08 ft.

DATE: 1914  
BY: J. S. [unclear]  
CHECKED BY: [unclear]  
SCALE: 1" = 40'

PROF. BY: J. S. [unclear]  
CHECKED BY: [unclear]  
SCALE: 1" = 40'