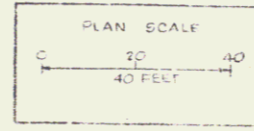


BM #1 - S.I.R. 45' ELM
Elev. - 712.82 - 0+21-100.5' Rt.

BRIDGE DATA		
	PRESENT	NEW
TYPE	6' Conc. Slab	12' Conc. Slab
CL. SPAN	20.0	20.0
CLEAR SPAN	17.5	17.5
ROADWAY	13.0	30.0
LANE FLOWAY	17.5	30.0
WEIGHT	5.0	5.5
CONDITION		
DETAILS	See Note 10	
BR SECTION		



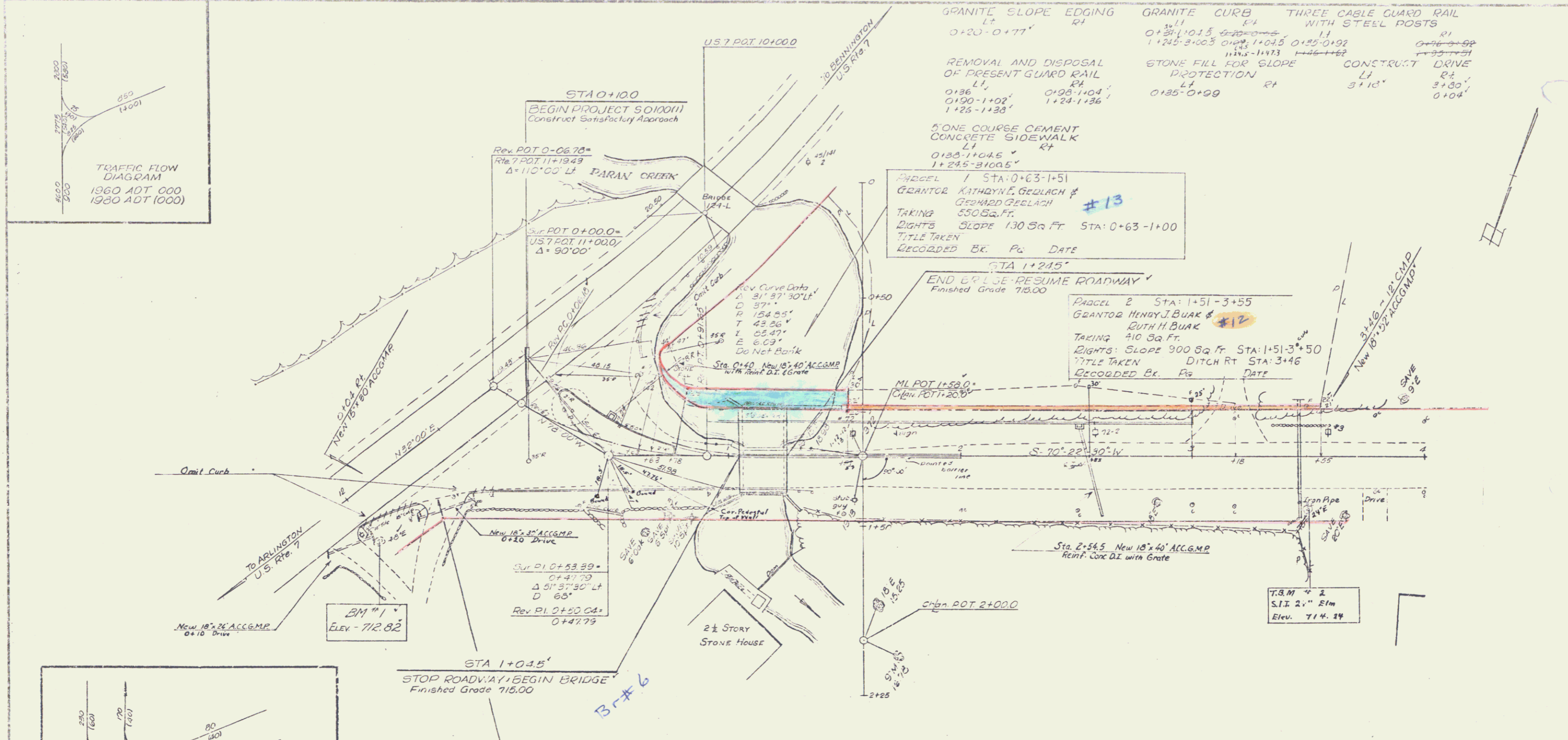
ITEM NO.	ITEM	UNIT	NET	OVERRUN	TOTAL	FINAL
125-A	CHAN. EXCAV. OF EARTH	C.Y.				
126-B	CHAN. EXCAV. OF ROCK	C.Y.				
105-C	ENCLOS. CHAN. EXCAV.	C.Y.				
107	STRUCT. EXCAV.	C.Y.				
401-B	CONC. CURB & SIDEWALK	C.Y.				
402	REIN. STEEL	LB.				
407	ASPHALT CURB CURBING	S.F.				
502-B	PAVED DRIVE TIE-INS	S.F.				
503	STAKES FOR STAKE PLACING	EA.				
504	STEEL PILING	L.F.				
505-A	TREATED SUPER PILING	L.F.				

STATE OF VERMONT
DEPARTMENT OF HIGHWAYS

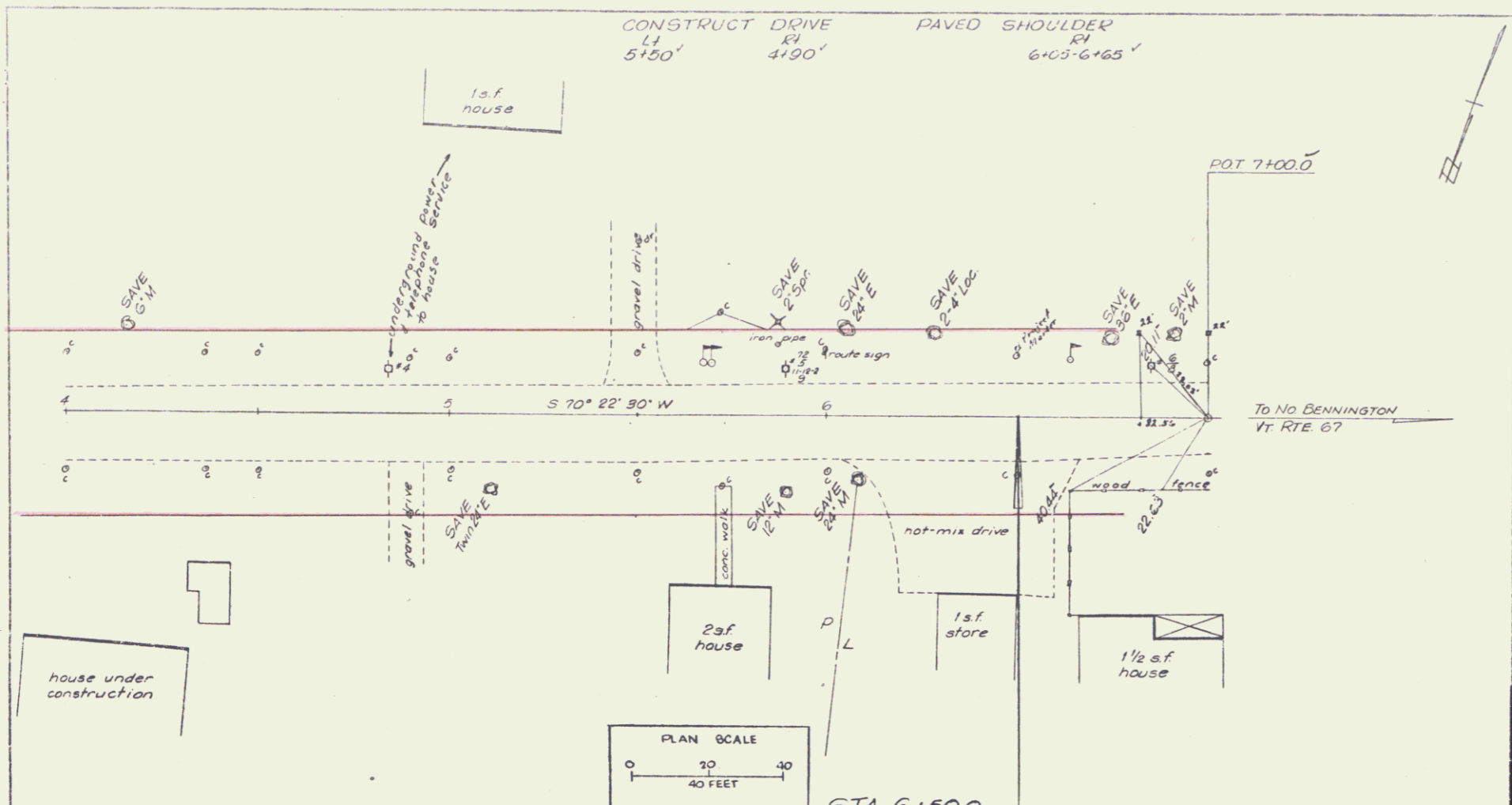
TOWN OF SHAFTSBURY
ROUTE No. 67 VT LOG STA.
NEW BRIDGE CONSTRUCTION
(BRIDGE No. 6)

SCALE 1" = 40'

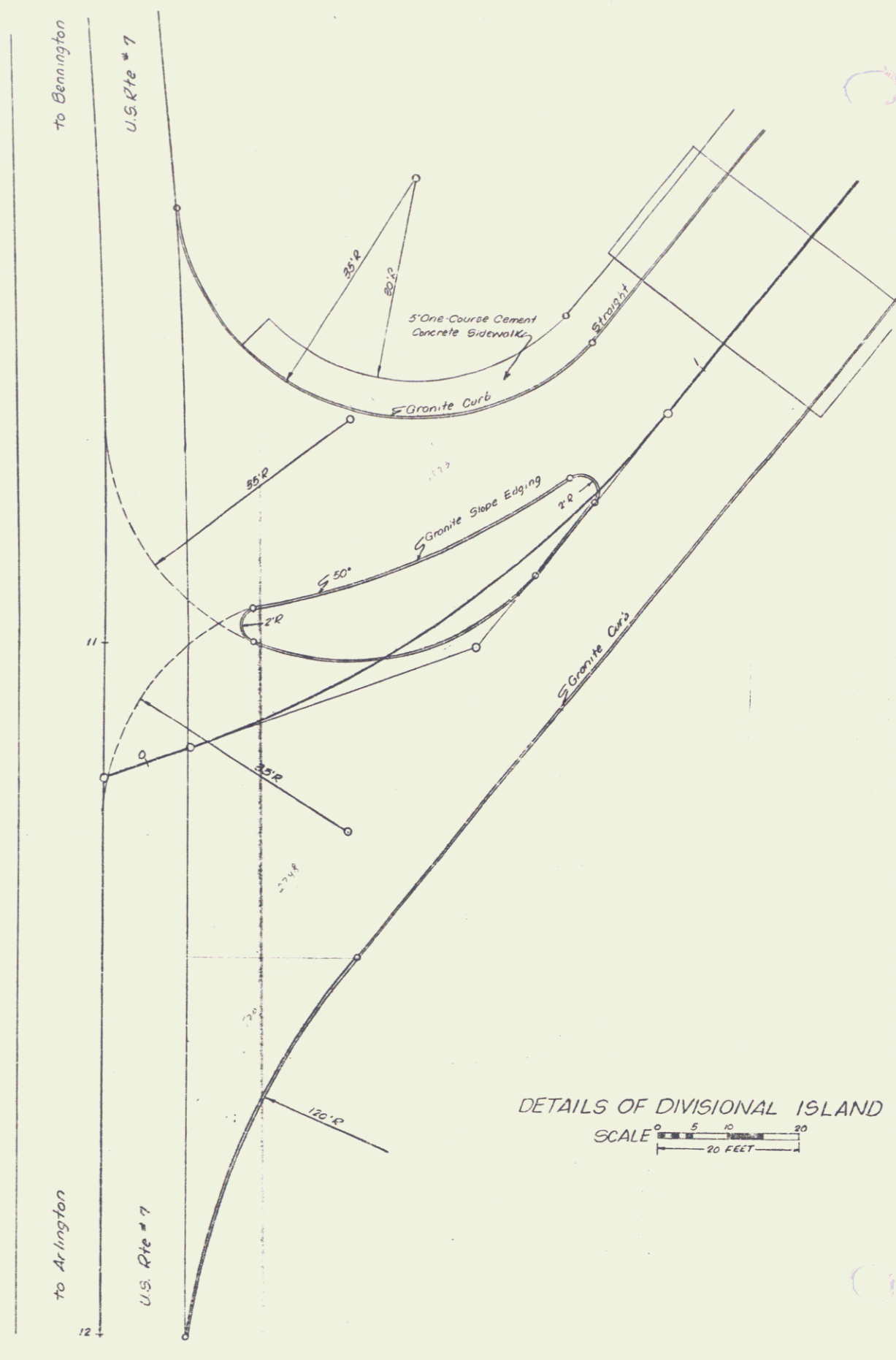
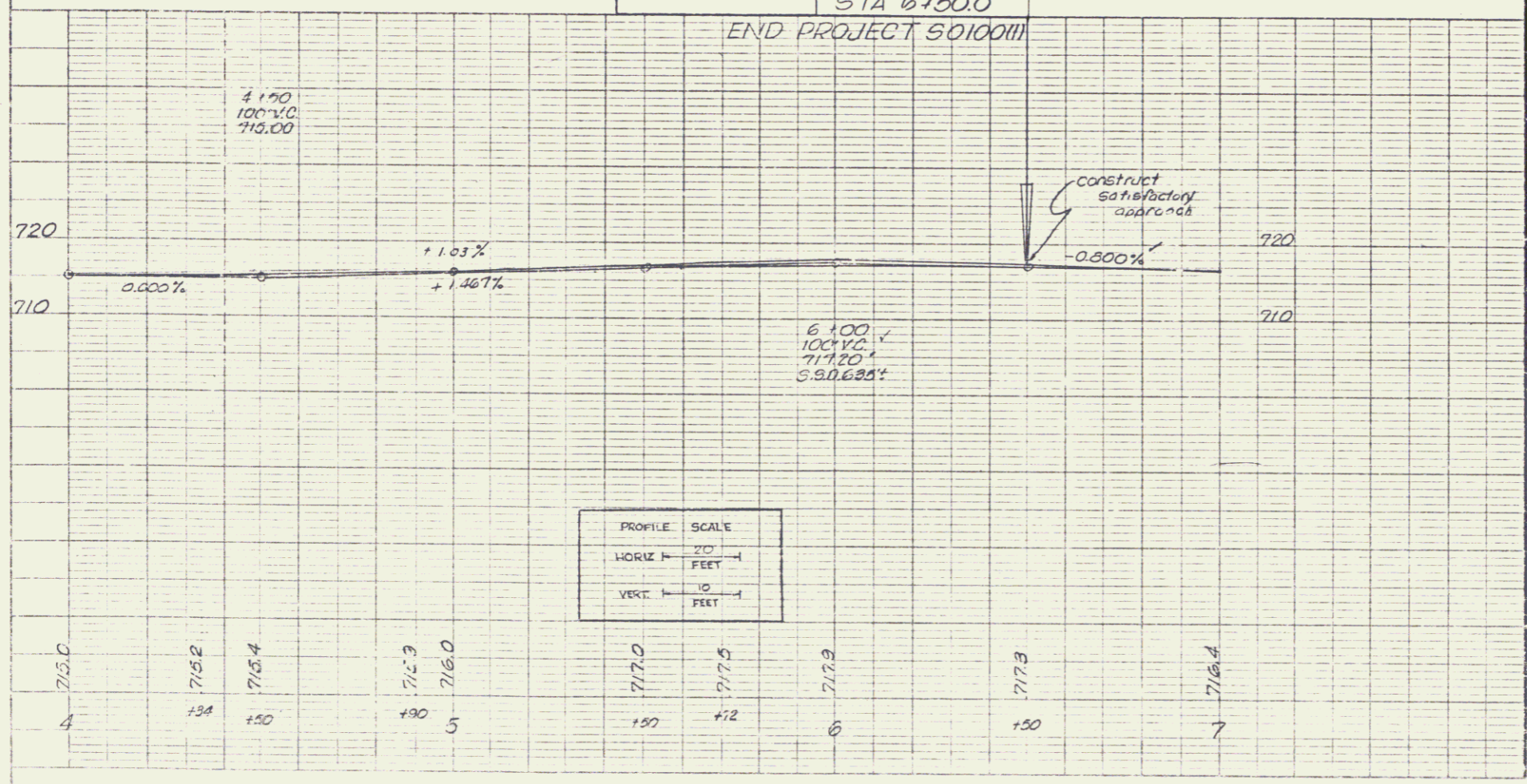
SURVEYED BY WATSON
DRAWN BY TJA CHECKED BY CEH
PROJECT NO. S 0100(1)
SHEET 5 OF 27



PLAN
 5-83
 2-24
 1-1
 NOTE: SEE SHEET 1-1 FOR THE LOCATION OF THE PROJECT.



PROFILE
 5-83
 2-24
 1-1
 NOTE: SEE SHEET 1-1 FOR THE LOCATION OF THE PROJECT.



SHAFTSBURY
 Proj. 5082100(1)
 Sheet 7 of 77