

**INDEX OF SHEETS**

- TITLE
- TYPICAL (2 1/2" Bituminous Concrete Pavement, Item 361-B, Mod.)
- SUMMARY OF QUANTITIES
- ITEM DETAIL & DRAINAGE SHEET
- EARTHWORK SHEETS
- SUMMARY (In-Class, Channel Exc. & Stone Fill)
- PLAN & PROFILE SHEETS
- DETAILS OF ROUND PLATE PIPE (Rev. Sta. 35+35.0)
- CHANNEL SECTIONS FOR PLATE PIPE (Rev. Sta. 35+35.0)
- DETAILS OF ROUND PLATE PIPE (Rev. Sta. 63+35.0)
- CHANNEL SECTIONS FOR PLATE PIPE (Rev. Sta. 83+35.0)
- DETAILS OF PLATE PIPE ARCH (Rev. Sta. 91+79.45 Rt.)
- STANDARD SHEETS
- A-61 (Drilling & Blasting of Solid Rock Sub-grade)
- B-1 (Banking Tables)
- B-5 (Typical Slope Grading)
- B-6 (Tuck Excavation)
- B-11 (Slope Stabilization)
- B-12 (Approach Intersection - Depressed Ramp)
- B-13 (Drive Intersection - Depressed & Crest Ramps)
- C-1 (Timber Cuts)
- D-2 (C.R.M. Headwalls - C.R.M. Retaining Wall - Standard Underdrain)
- D-2 (Bituminous Concrete Outter)
- D-3 (Spec. ACCOMP Pipe Elbows)
- D-8 (Reinf. Conc. D.I. w/Grate (Bottom Section))
- D-10 (Top for Reinf. Conc. D.I. w/Grate)
- D-18 (Prec. Reinf. Conc. Curb D.I. w/ Cast Iron Grate & Frame)
- E-1 (Barricades, Signs & Lights)
- E-8 (Federal-Aid Construction Identification Signs)
- G-2A (Two Cable Guard Rail w/Wood Posts)
- G-4 (Wood Marker Posts - Wood Guide Posts - Plank Guard Rail)
- J-1 (Project Markers - Boundary Markers)
- 40-56. CROSS SECTIONS
- APPROACH SECTIONS (Town Road #68 - Rev. Sta. 30+43.5 Rt.)
- APPROACH SECTIONS (Town Road #57 - Rev. Sta. 82+45.0 Lt.)
- APPROACH SECTIONS (Town Road #83 - Rev. Sta. 85+53.5 Lt.)
- APPROACH SECTIONS (Town Road #59 - Rev. Sta. 91+79.45 Rt.)
- APPROACH SECTIONS (Town Road #26 - Rev. Sta. 91+79.45 Lt.)
- BANKING TRANSITION DIAGRAMS

**PROJECT NAME & NUMBER TYPE PAVEMENT AREA**  
 RANDOLPH S 0190(1) SA BIT. CONC. PAV. T. 10,363 SY

**RECORD PLANS**

**MATERIALS**

SUBBASE OF GRAVEL & GRAVEL SHOULDERS - VESPER'S GRAVEL BAR - STOCKBRIDGE, VT. & SHARON SAND & GRAVEL INC. - SHARON, VT.

GRANULAR BORROW & SOIL FOR SOIL CEMENT - WALLACE PIT - RANDOLPH, VT.

PORTLAND CEMENT FOR SOIL CEMENT - UNIVERSAL ATLAS CEMENT CO. - HUDSON, N.Y.

ASPHALT - MOBIL OIL CO. - E. PROVIDENCE, R.I.

REFINED TAR - WITCO CHEMICAL CO. - WORCESTER, MASS.

PEASTONE - WELLS - AMSON QUARRY CO. INC. - BARRE, VT.

BITUMINOUS CONCRETE - L.M. FIFE & SON INC. (PLANT) - W. LEBANON, N.H.

CONCRETE CLASS "B" - D & D CONCRETE CO. - RANDOLPH, VT.

REINFORCING STEEL - VERMONT STRUCTURAL STEEL CORP. - BURLINGTON, VT.

REINFORCING PIPE & PREC. R.C.P.D.I. - MARTIN MARIETTA CO. - WINDSOR, VT.

ASPH. CTD. CORR. GALV. METAL PIPE - NEW ENGLAND METAL PIPE CO. - WHITE RIVER JUNCTION, VT.

C.I. GRATES - E.L. LABARRON FOUNDRY - BROCKTON, MASS.

GUARD RAIL, WOOD GUIDE & MARKER POSTS & TREATED TIMBER CURB - S.T. GRISWOLD & CO. INC. - WILTON, VT.

**CONTRACTOR - ROGERS BROTHERS**  
 RANDOLPH, VT.  
 RESIDENT ENGINEER - G.J. ABAIR.  
 INSPECTOR - D. MAHONEY.  
 RECORD PLANS - G.J. ABAIR.

**CONTRACT :**  
 DATED - APRIL 23, 1963.  
 STARTED - MAY 2, 1963.  
 COMPLETED - JANUARY 28, 1964.  
 ACCEPTED - JANUARY 28, 1964.

STATE OF VERMONT  
 DEPARTMENT OF HIGHWAYS  
**PROPOSED IMPROVEMENT**

**TOWN OF RANDOLPH**  
 COUNTY OF ORANGE  
 STATE AID ROUTE #1  
 RANDOLPH VILLAGE - RANDOLPH CENTER ROAD

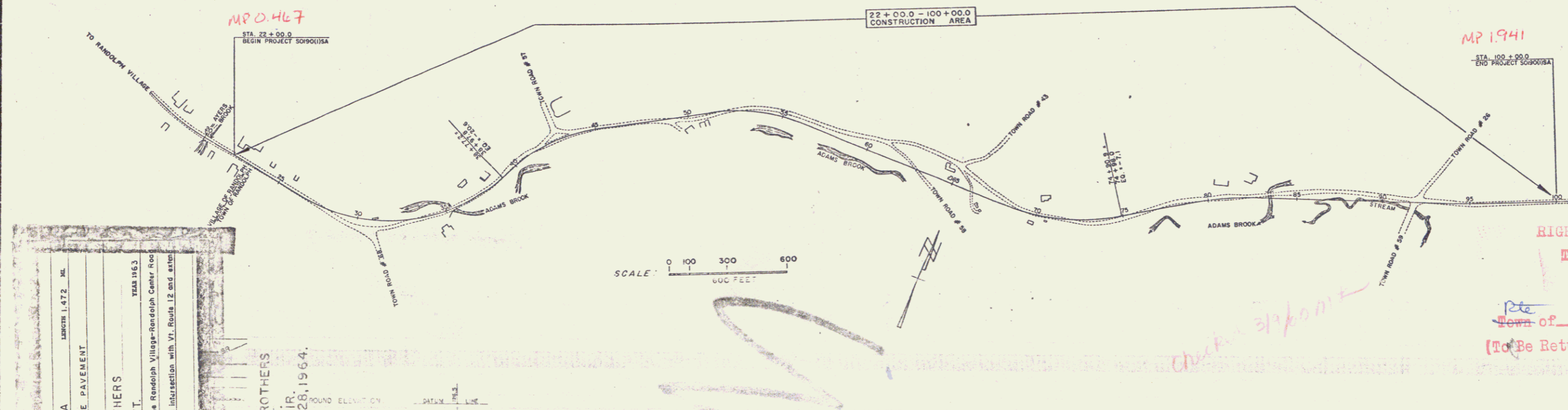
FEDERAL AID SECONDARY PROJECT

BEGINNING AT A POINT ON THE RANDOLPH VILLAGE - RANDOLPH CENTER ROAD APPROXIMATELY 0.45 OF A MILE FROM ITS INTERSECTION WITH VERMONT ROUTE 12 AND EXTENDING NORTHEASTERLY 1.472 MILE.

LENGTH OF PROJECT: 7,772.3 FEET = 1.472 MILE

Route: VT 66  
 Project: S0190(1) SA  
 Plan: 00R401  
 Date: 08/28/1962

1960 ADT	980
1950 ADT	1600
1950 DHV	245
V	30 MPH
D	57%
T	9%



**RANDOLPH**  
 PROJECT S 0190 (1) SA  
 LENGTH 1.472 MI.  
 YEAR 1963  
 BITUMINOUS CONCRETE PAVEMENT  
 CONTRACTOR - ROGERS BROTHERS  
 RANDOLPH, VT.  
 RECORD PLANS - G.J. ABAIR.  
 COMPLETED JANUARY 28, 1964.

**CURVE DATA**

DEFLECTION OF ANGLE	A
DEGREE OF CURVE	D
RADIUS OF CURVE	R
TANGENT DISTANCE	T
LENGTH OF CURVE	L
EXTERNAL DISTANCE	E
POINT OF INTERSECTION	PI
POINT OF CURVE	PC
POINT OF TANGENT	PT
POINT ON TANGENT	POT
POINT ON SUB-TANGENT	POST

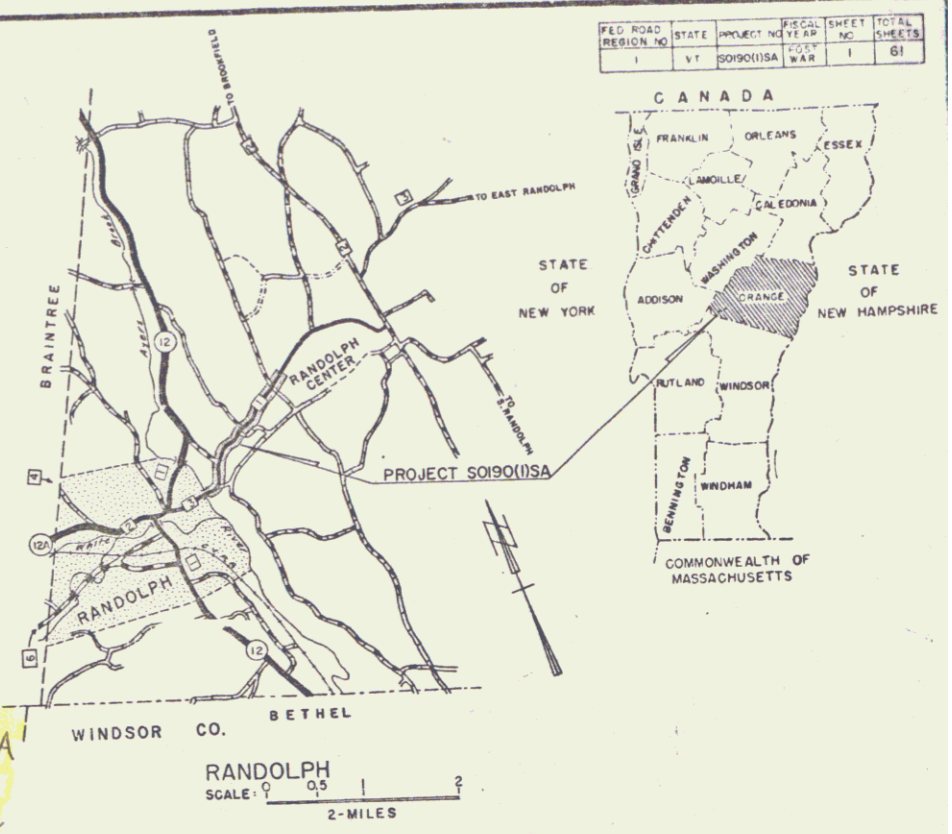
**SCALES**

TITLE	1" = 300'
TYPICAL	1" = 48'
PLAN	1" = 50'
PROFILE HORIZONTAL	1" = 50'
PROFILE VERTICAL	1" = 10'
CROSS-SECTIONS	1" = 10'

THESE PLANS ARE SUBJECT TO SUCH REVISIONS AS MAY BE REQUIRED BY THE BUREAU OF PUBLIC ROADS OR THE COMMISSIONER OF HIGHWAYS.

CONSTRUCTION IS TO BE CARRIED ON IN ACCORDANCE WITH THE PLANS AND THE STANDARD SPECIFICATIONS FOR HIGHWAY AND BRIDGE CONSTRUCTION OF JANUARY 1956 SUBMITTED TO THE BUREAU OF PUBLIC ROADS AS APPROVED JULY 3, 1956, INCLUDING ALL SUBSEQUENT APPROVED REVISIONS AND SUCH REVISED SPECIFICATIONS AND SPECIAL PROVISIONS AS ARE SUBMITTED WITH THE PLANS.

APPROVED	DATE	APPROVED	DATE	APPROVED	DATE	APPROVED	DATE	APPROVED	DATE
[Signature]	8/28/62	[Signature]	8/28/62	[Signature]	8/28/62	[Signature]	8/28/62	[Signature]	8/28/62

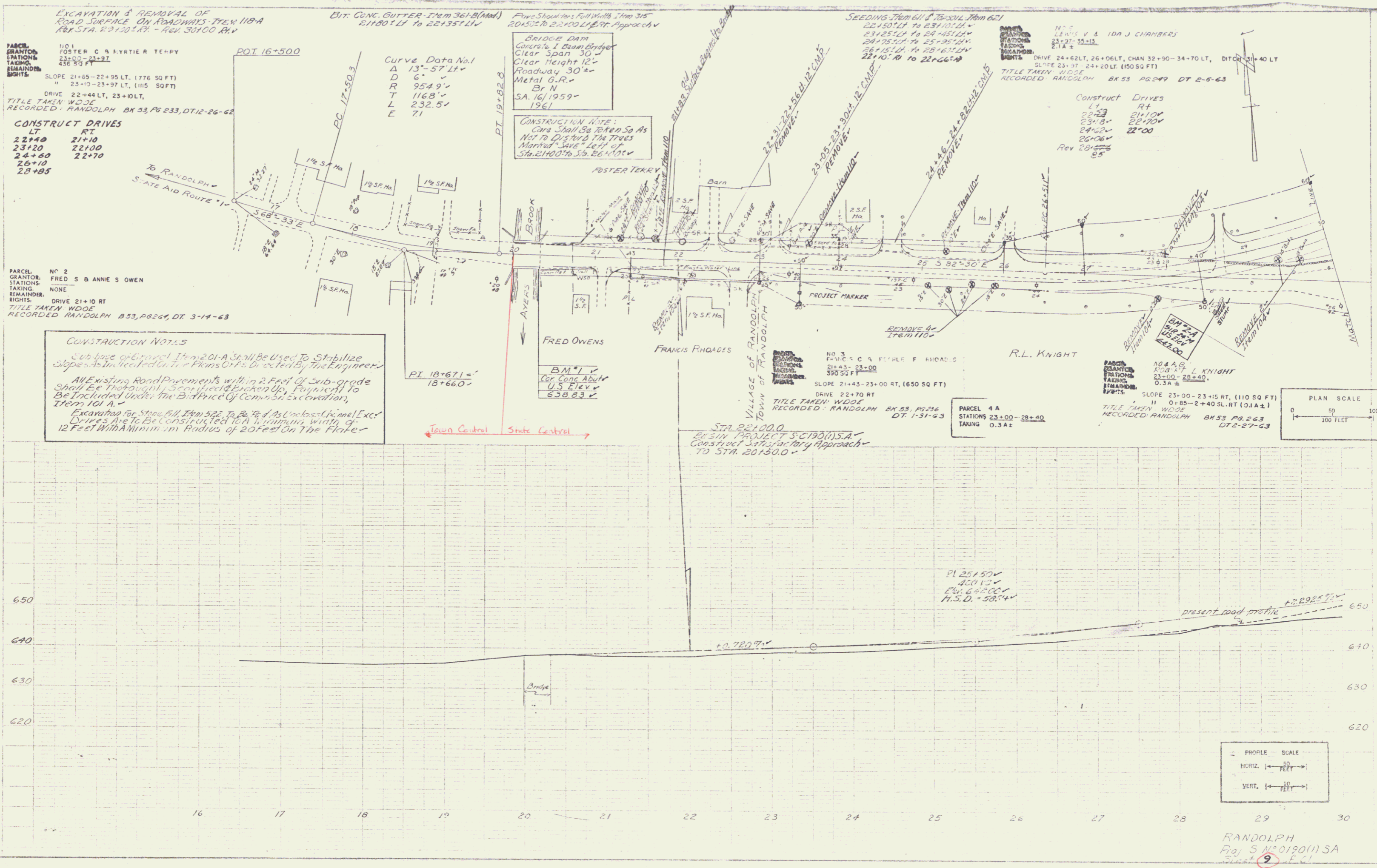


RIGHT-OF-WAY DIVISION  
 TOWN FILE  
 PERPETUAL  
 Town of VT 66  
 (To Be Returned To H.O.W. Division)

DEPARTMENT OF COMMERCE  
 BUREAU OF PUBLIC ROADS

APPROVED

PROJECT NO. 0190(1) SA  
 SHEET 1 OF 61 SHEETS



EXCAVATION & REMOVAL OF ROAD SURFACE ON ROADWAY ITEM 118-A  
 REF. STA. 22+10.00 - REV. 30+00 R/W

PARCEL NO. 1  
 GRANTEE: FOSTER C & RYDIER TERRY  
 STATIONS: 22+00 - 24+27  
 TAKING: 436.50 FT  
 REMAINDER: NONE  
 RIGHTS: DRIVE 22+44LT, 23+10LT, 23+10R, 23+37LT, (1115 SQ FT)  
 TITLE TAKEN: W.D.O.E.  
 RECORDED: RANDOLPH BK 53, PG 233, DT 12-26-62

CONSTRUCT DRIVES

LT	RT
22+40	21+10
23+20	22+00
24+40	22+70
26+10	22+00
28+85	

PARCEL NO. 2  
 GRANTEE: FRED S & ANNIE S OWEN  
 STATIONS: NONE  
 TAKING: NONE  
 REMAINDER: NONE  
 RIGHTS: DRIVE 21+10 RT  
 TITLE TAKEN: W.D.O.E.  
 RECORDED: RANDOLPH BK 53, PG 264, DT 3-14-63

CONSTRUCTION NOTES

Sub base of gravel Item 201-A shall be used to stabilize slopes as indicated on the Plans or as directed by the Engineer.

All existing road pavements within a 2 Foot of sub-grade shall be thoroughly scarified & broken up, prepared to be included under the Bid Price of Common Excavation, Item 101 A.

Excavation for Stone Fill Item 522 To Be 10' of As Unclass (lime) Exc. Drives are to be constructed 12' to 14' wide with a width of 12 Feet with a minimum radius of 20 feet on the flatter.

Curve Data No. 1  
 Δ 13°-57' LT  
 D 6'  
 R 954.9'  
 T 116.8'  
 L 232.5'  
 E 71'

CONSTRUCTION NOTE:  
 Cars Shall Be Taken So As Not To Disturb The Trees Marked "Save" Left of Sta. 21+00 To Sta. 26+10 Rev.

BM 1  
 Cor. Conc. Abut.  
 U.S. Elev.  
 638.83

STA. 22+00.0  
 BEGIN PROJECT SECTION 5-A  
 Construct satisfactory approach to STA. 20+00.0

PARCEL NO. 3  
 GRANTEE: F. W. C. & R. F. HIGDON  
 STATIONS: 21+43 - 23+00  
 TAKING: 390.50 FT  
 REMAINDER: NONE  
 RIGHTS: DRIVE 22+70 RT  
 SLOPE 21+43-23+00 RT, (650 SQ FT)  
 TITLE TAKEN: W.D.O.E.  
 RECORDED: RANDOLPH BK 53, PG 216, DT 1-31-63

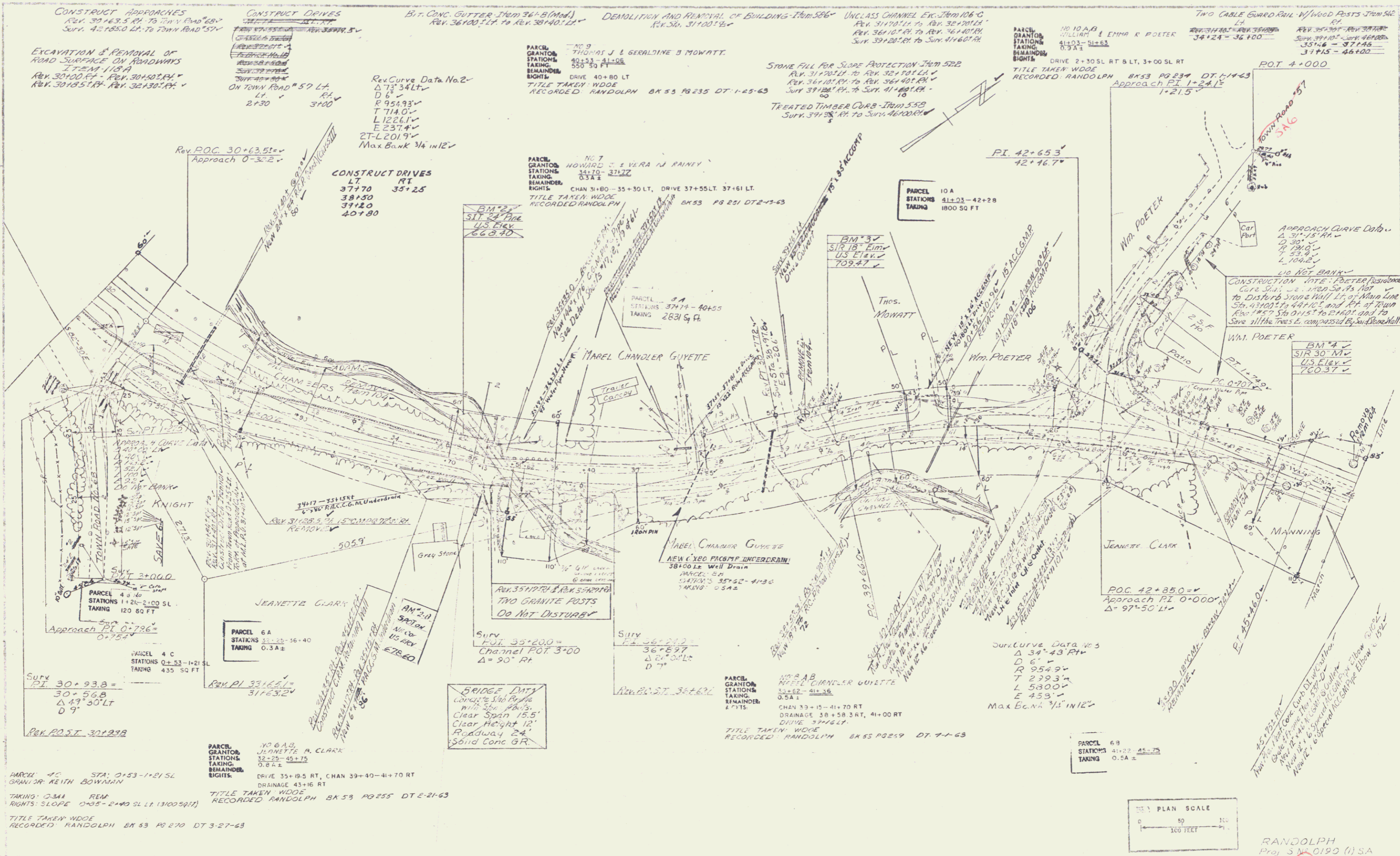
PARCEL 4 A  
 STATIONS 23+00 - 28+40  
 TAKING 0.3 A E

PARCEL NO. 4 A  
 GRANTEE: R. L. KNIGHT  
 STATIONS: 23+00 - 28+40  
 TAKING: 0.3 A E  
 REMAINDER: NONE  
 RIGHTS: DRIVE 23+00-23+15 RT, (110 SQ FT)  
 DRIVE 0+85-2+40 SL RT, (0.1 A ±)  
 TITLE TAKEN: W.D.O.E.  
 RECORDED: RANDOLPH BK 53, PG 263, DT 2-27-63

PROFILE SCALE  
 HORIZ. 1" = 20 FEET  
 VERT. 1" = 10 FEET

RANDOLPH  
 Proj. S. No. 0190(1) SA  
 Sheet 2 of 2

PLAN	DATE	BY
REVISED		
NO. 1	DATE	BY
NO. 2	DATE	BY
NO. 3	DATE	BY



**CONSTRUCT APPROACHES**  
 REV. 30+43.5 PI TO TOWN ROAD 57N  
 SURV. 42+185.0 CH. TO TOWN ROAD 57N

**CONSTRUCT DRIVES**  
 ON TOWN ROAD 57N LA  
 2+30 3+00

**BIT. CONC. GUTTER - Item 364-B (Mod.)**  
 REV. 36+00 TO REV. 30+40.12

**DEMOLITION AND REMOVAL OF BUILDING - Item 586**  
 REV. 30+100 TO REV. 30+100.12

**UNGLASS CHANNEL ETC. - Item 106-C**  
 REV. 31+00 TO REV. 32+00.12  
 REV. 36+100 TO REV. 36+100.12  
 SURV. 39+100.12 TO SURV. 41+60.12

**TWO CABLE GUARD RAIL W/ WOOD POSTS - Item 512**  
 REV. 34+24 TO REV. 36+100  
 REV. 37+100 TO REV. 37+100  
 REV. 37+100 TO REV. 37+100  
 REV. 37+100 TO REV. 37+100

**EXCAVATION & REMOVAL OF ROAD SURFACE ON ROADWAYS ITEM 118A**  
 REV. 30+100 TO REV. 30+100.12  
 REV. 30+100.12 TO REV. 30+100.12

**Curve Data No. 2**  
 Δ 73° 34' LT  
 D 6'  
 R 954.93'  
 T 714.0'  
 L 1226.1'  
 E 237.4'  
 27-L 201.9'  
 Max Bank 3/4 IN 12"

**CONSTRUCT DRIVES**  
 LT RT  
 37+70 35+25  
 38+50 37+120  
 40+80

**Parcel 10A**  
 HOWARD & VERA J. RAINEY  
 STATIONS 34+10 - 37+22  
 TAKING 0.3A ±  
 REMAINDER CHAN 31+80 - 35+30 LT, DRIVE 37+55 LT 37+61 LT  
 TITLE TAKEN WDOE  
 RECORDED RANDOLPH BK 53 PG 251 DT 2-13-63

**STONE FILL FOR SLOPE PROTECTION - Item 522**  
 REV. 31+00 TO REV. 32+00.12  
 REV. 36+100 TO REV. 36+100.12  
 SURV. 39+100.12 TO SURV. 41+60.12

**TREATED TIMBER CURB - Item 559**  
 SURV. 37+100 TO SURV. 40+00.12

**POI 4+000**

**Approach PI 0+796**  
 Δ 0° 25'

**Parcel 6A**  
 STATIONS 35+25 - 36+40  
 TAKING 0.3A ±

**BRIDGE DATA**  
 CONCRETE SUB. R.F. 12'  
 WITH 5" R.F. 15'  
 CLEAR SPAN 15.5'  
 CLEAR HEIGHT 12'  
 ROADWAY 24'  
 SOLID CONC. GR.

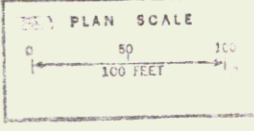
**Parcel 10A B**  
 MAREL CHANDLER GUYETTE  
 STATIONS 31+52 - 41+38  
 TAKING 0.5A ±  
 REMAINDER CHAN 33+15 - 41+70 RT  
 DRAINAGE 38+58.3 RT, 41+00 RT  
 DRIVE 37+61  
 TITLE TAKEN WDOE  
 RECORDED RANDOLPH BK 53 PG 259 DT 7-1-63

**Curve Data No. 3**  
 Δ 54° 43' RT  
 D 6'  
 R 254.9'  
 T 299.3'  
 L 580.0'  
 E 453'  
 Max Bank 3/4 IN 12"

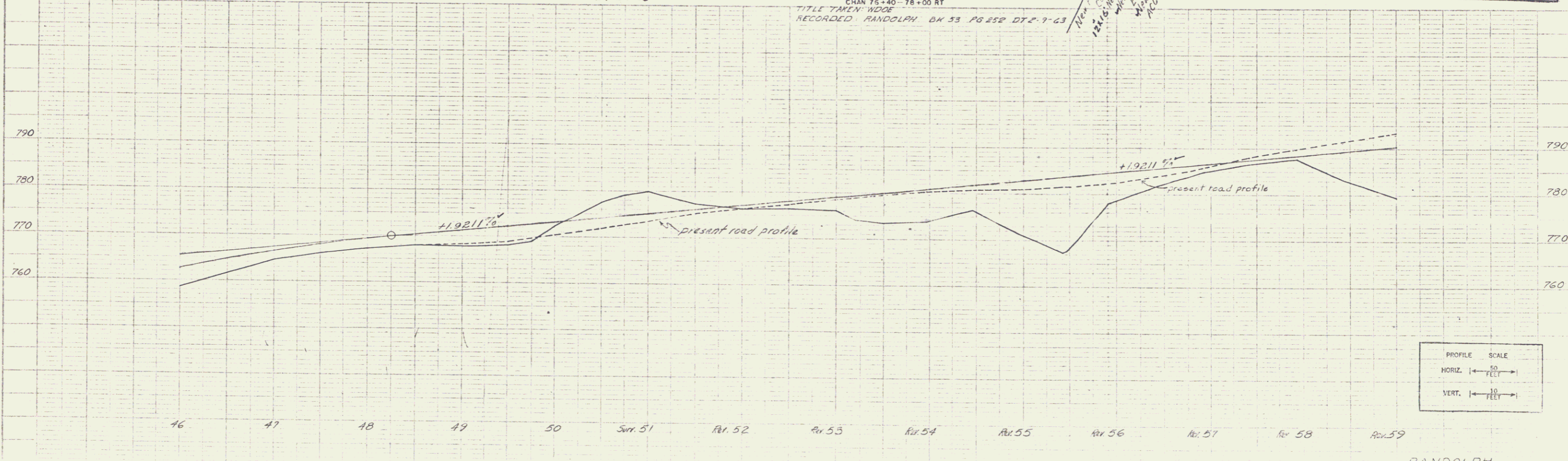
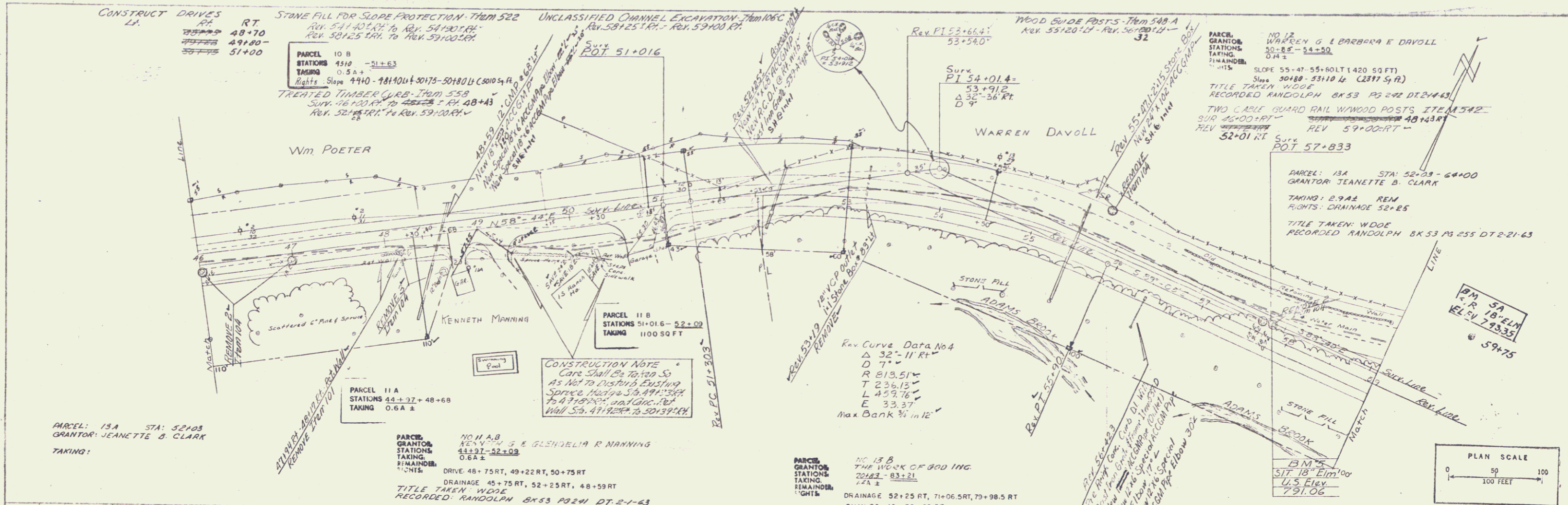
**Parcel 6B**  
 STATIONS 41+22 - 45+28  
 TAKING 0.5A ±

**Parcel 4C**  
 GRANITE KENTH BOWMAN  
 STA. 0+53 - 1+21 SL  
 TAKING 0.3A REM  
 RIGHTS: SLOPE 0+35 - 2+40 SL LT (13005971)

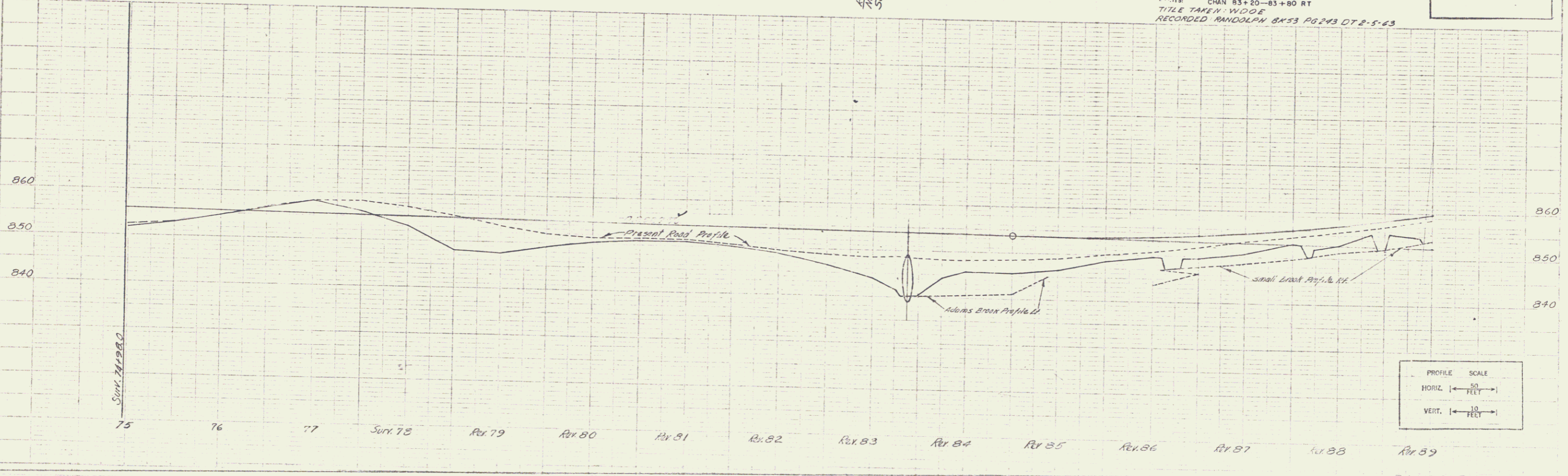
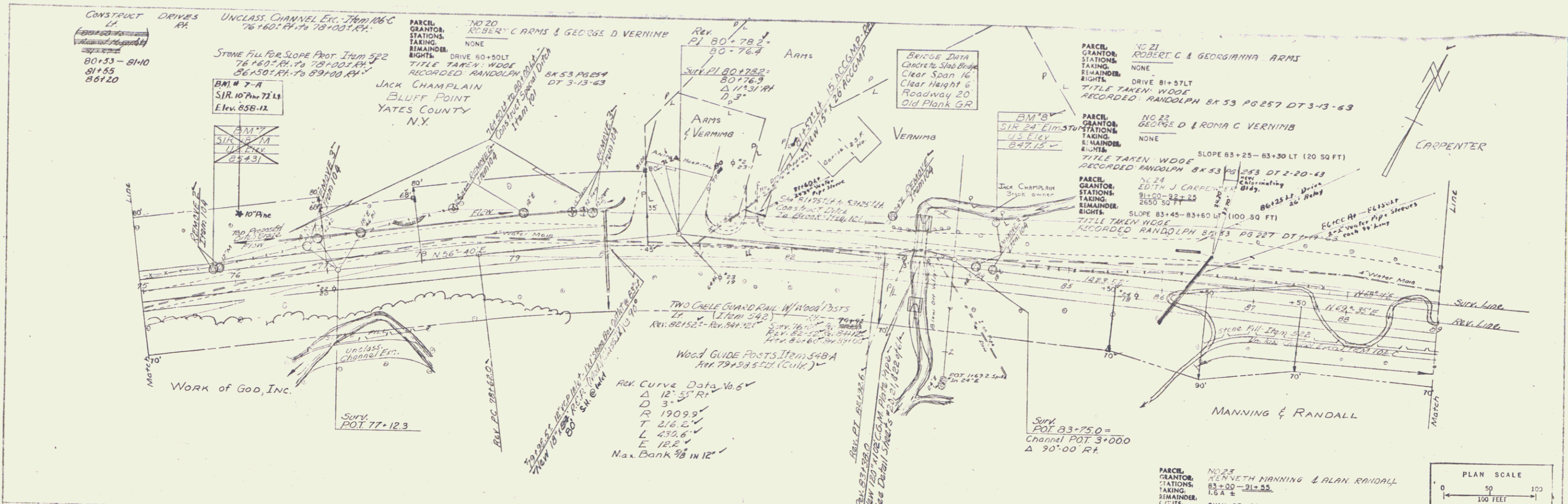
**Parcel 4C**  
 JEANNETTE CLARK  
 STA. 0+53 - 1+21 SL  
 TAKING 0.3A REM  
 RIGHTS: SLOPE 0+35 - 2+40 SL LT (13005971)



RANDOLPH  
 Proj. 5 N 0190 (1) SA  
 Sheet 10 of 11



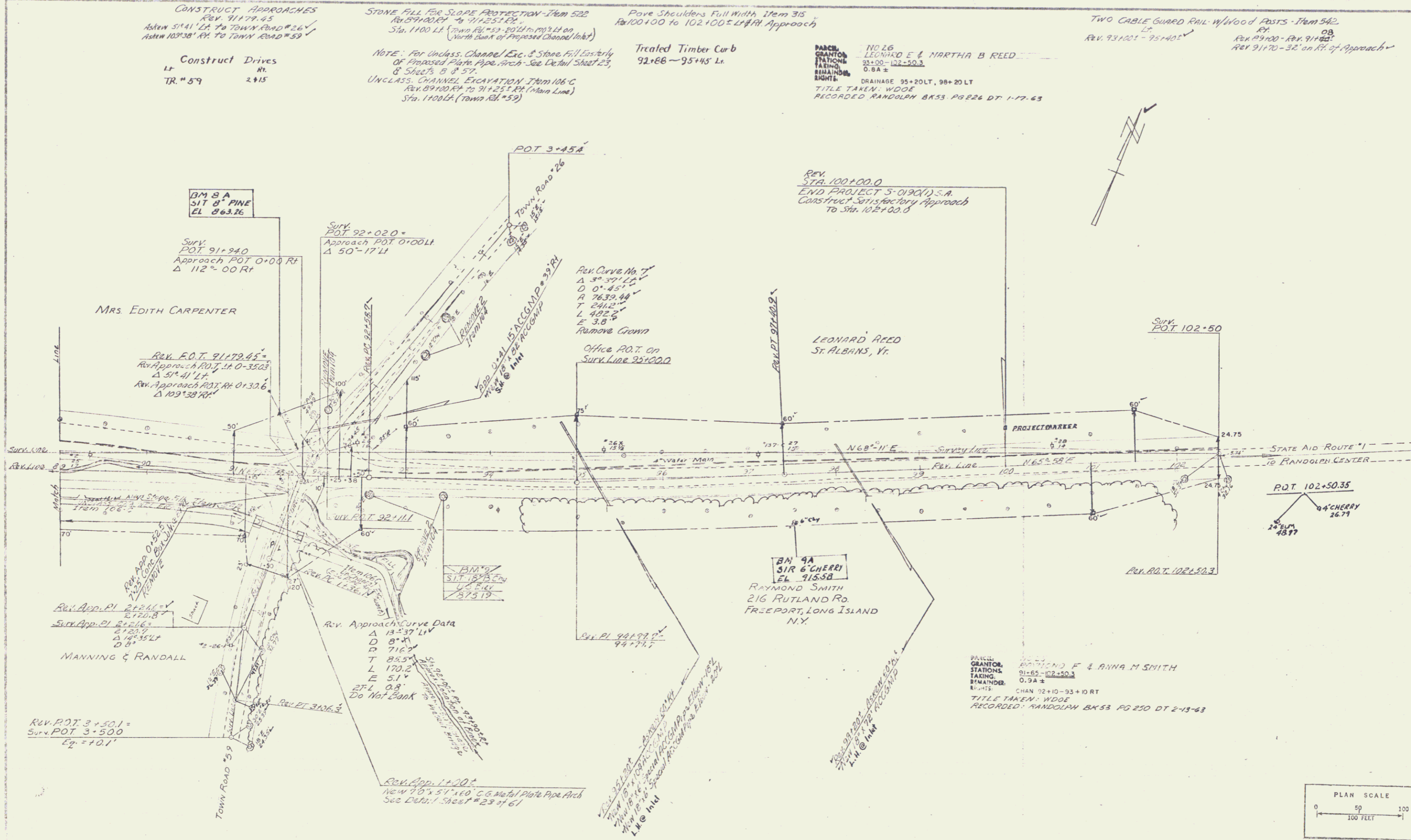




RANDOLPH Proj. S. 180190 (1) SA Sheet 14 of 21

6

PLAN	DATE	BY	CHKD
REVISED			
ADDED			
DELETED			
BY			
DATE			



CONSTRUCT APPROACHES  
REV. 9/17/45  
As per 5141' LA TO TOWN ROAD #26  
As per 103'38" RA TO TOWN ROAD #59

STONE FILL FOR SLOPE PROTECTION - Item 522  
REV. 8/24/45  
Sta. 1100 LA (Town Rd #59 to 102+00)  
(North Bank of Proposed Channel Inlet)

Pave Shoulders Full Width, Item 315  
From 100+00 to 102+00 ± L&R Approach

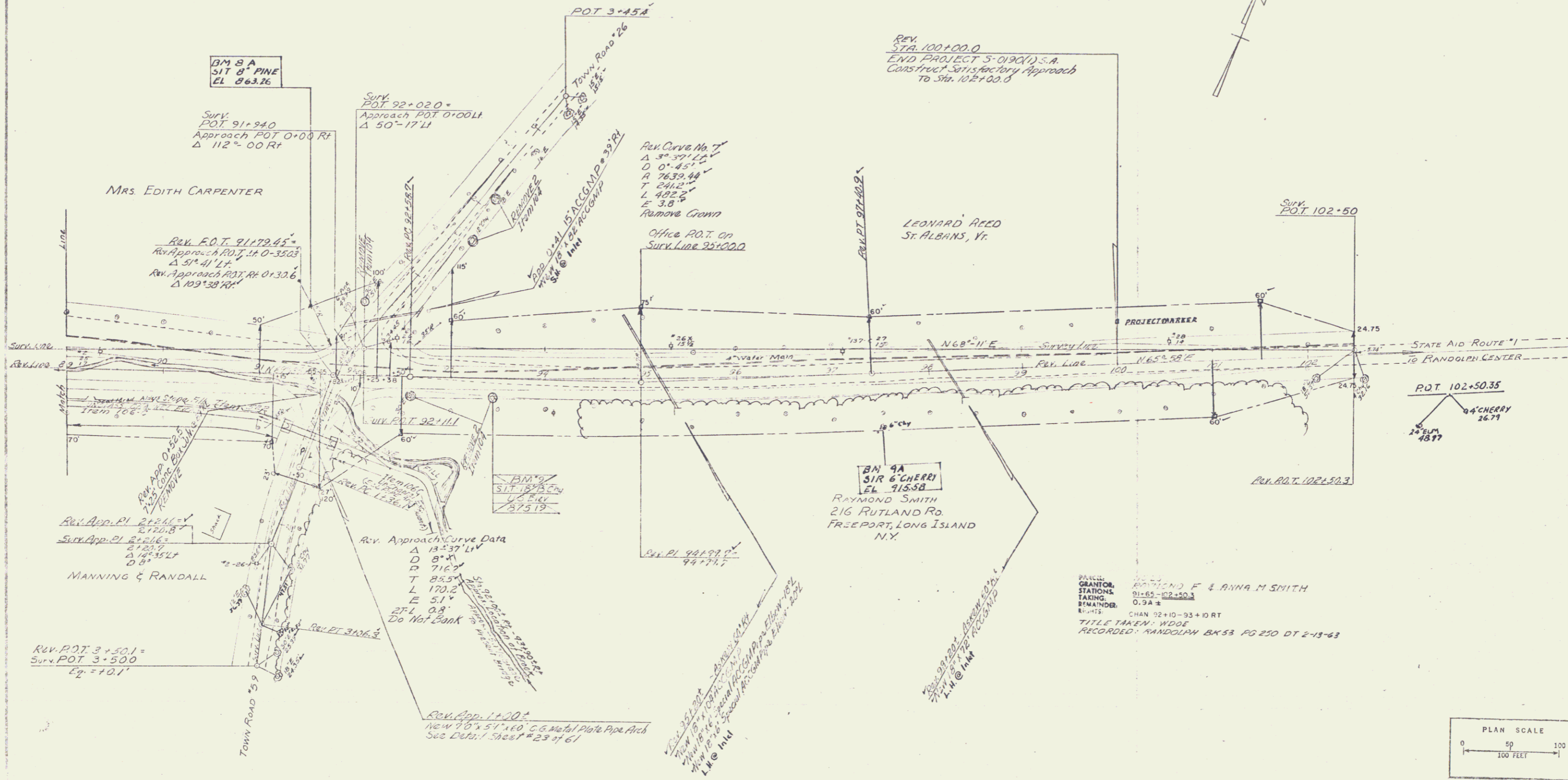
TWO CABLE GUARD RAIL w/ Wood Posts - Item 542  
REV. 9/31/45  
REV. 9/17/45 - 32' on R.H. of Approach

Construct Drives  
LT TR. # 59 2+15

NOTE: For Uncl. Channel Exc. & Stone Fill East of  
Proposed Flute Pipe Arch - See Detail Sheet 23  
& Sheets 5 & 57.  
UNCL. CHANNEL EXCAVATION - Item 106-C  
REV. 8/24/45  
Sta. 1100 LA (Town Rd #59)

Treated Timber Curb  
92+86 - 95+45 L.

NO. 16  
LEONARD E. & MARTHA B. REED  
93+00 - 102+50.3  
0.8A ±  
DRAINAGE 95+20 LT, 98+20 LT  
TITLE TAKEN: WDOE  
RECORDED: RANDOLPH BK 53 PG 226 DT 1-17-63



MRS. EDITH CARPENTER  
REV. E.O.T. 91+70.45  
Rev. Approach POT 0+00 RT  
Δ 51° 41' L  
Rev. Approach POT RT 0+13.06  
Δ 102° 38' RT

SYNCH. POT 92+02.0  
Approach POT 0+00 LT  
Δ 50° 17' LT

REV. CURVE NO. 7  
A 37° 39' 12"  
D 0° 45' 12"  
A 2639.44  
T 241.2  
L 482.2  
E 3.8'  
Remove Growth  
Office P.O.T. on  
Surv. Line 92+00.0

REV. STA. 100+00.0  
END PROJECT 5-0190(1) S.A.  
Construct Satisfactory Approach  
to Sta. 102+00.0

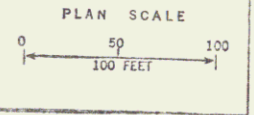
REV. APP. PL. 21241-1  
2120.8  
Surv. App. PL. 21216-5  
2123.9  
Δ 18° 35' LT  
0.8'

MANNING & RANDALL

REV. APPROACH CURVE DATA  
Δ 13° 37' L  
D 8° 41'  
D 716.2  
T 85.5  
L 170.2  
E 51'  
P.L. 0.8'  
Do Not Bank

BN 4A  
3/16 CHERRY  
EL. 915.58  
RAYMOND SMITH  
216 RUTLAND RD.  
FREEPORT, LONG ISLAND  
N.Y.

NO. 16  
LEONARD E. & ANNA M. SMITH  
91+65 - 102+50.3  
0.8A ±  
CHAN 92+10 - 93+10 RT  
TITLE TAKEN: WDOE  
RECORDED: RANDOLPH BK 53 PG 250 DT 2-13-63



RANDOLPH  
REV. 5-15-63 (1) S.A.  
Sheet 15 of 61