

PLAN	DATE	BY	CHKD
REVISED			
ADDED			
DELETED			
BY			
DATE			

CONSTRUCT APPROACHES
REV. 9/17/45
As per 5141' LA TO TOWN ROAD #26
As per 103'38" RA TO TOWN ROAD #59

Construct Drives
LT TR. # 59 2+15

STONE FILL FOR SLOPE PROTECTION - Item 522
REV. 8/24/45
Sta. 1100 LA (Town Rd #59 to 103'38" LA on South Bank of Proposed Channel Inlet)

NOTE: For Uncl. Channel Exc. & Stone Fill East of Proposed Flute Pipe Arch - See Detail Sheet 23 & Sheets B & 57.
UNCL. CHANNEL EXCAVATION - Item 106-C
REV. 8/24/45
Sta. 1100 LA (Town Rd #59)

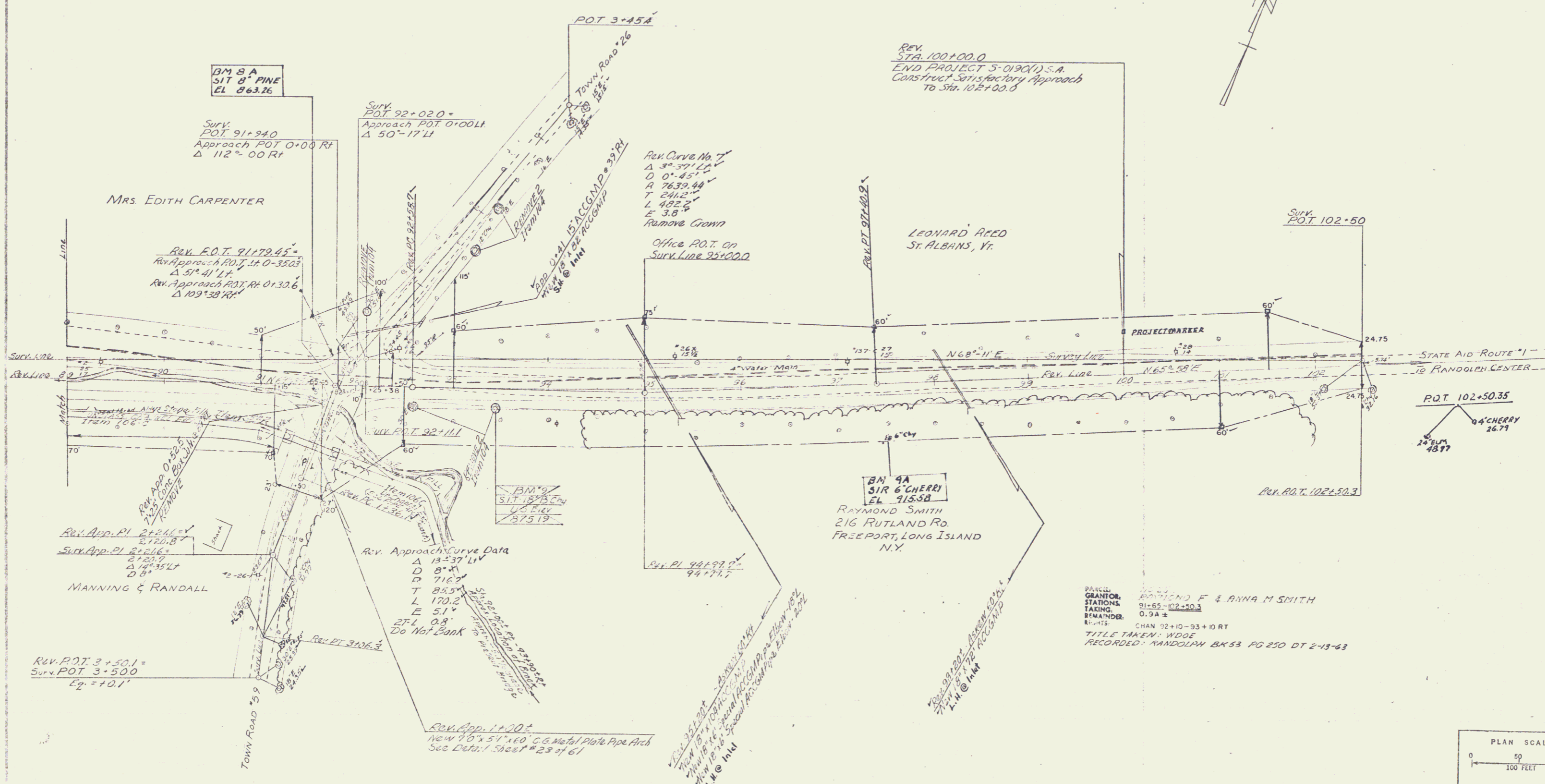
Pave Shoulders Full Width, Item 315
From 100+00 to 102+00 ± L&R Approach

Treated Timber Curb
92+86 - 95+45 L.

PARCEL GRANTEE: NO. 16 LEONARD E. & MARTHA B. REED
STATIONS: 92+00 - 102+00 ±
TAKING: 0.9A ±
REMAINDER:
RIGHTS: DRAINAGE 95+20 LT, 98+20 LT
TITLE TAKEN: WDOE
RECORDED: RANDOLPH BK 53 PG 226 DT 1-17-63

TWO CABLE GUARD RAIL w/ Wood Posts - Item 542
REV. 9/31/45

REV. 9/17/45 - REV. 9/17/45
REV. 9/17/45 - 32' on R.H. of Approach



REV. E.O.T. 91+70.45
Rev. Approach POT 0+00 RT
Δ 51° 41' 14"
Rev. Approach POT RT 0+13.06
Δ 102° 38' 34"

REV. APP. PI 2124.1
2120.8
2121.6
2123.9
Δ 18° 35' 17"
0.8'

REV. POT 3+50.1 =
Surv. POT 3+50.0
E.P. = 10.1'

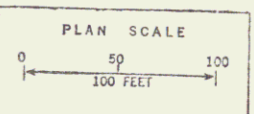
Surv. POT 92+02.0
Approach POT 0+00 LT
Δ 50° 17' 11"

Rev. Approach Curve Data
Δ 13° 37' 11"
D 8° 41'
D 716.2'
T 85.5'
L 170.2'
E 51°
P.L. 0.8'
Do Not Bank

REV. CURVE NO. 7
A 37° 39' 12"
D 0° 45' 17"
A 2639.44'
T 241.2'
L 482.2'
E 3.8'

REV. STA. 100+00.0
END PROJECT 5-0190(1) S.A.
Construct Satisfactory Approach
To Sta. 102+00.0

PARCEL GRANTEE: EDWARD F. & ANNA M. SMITH
STATIONS: 91+65 - 102+50.1
TAKING: 0.9A ±
REMAINDER:
RIGHTS: CHAN 92+10 - 93+10 RT
TITLE TAKEN: WDOE
RECORDED: RANDOLPH BK 53 PG 250 DT 2-13-63



RANDOLPH
REV. 5/15/45 (1) S.A.
Sheet 15 of 61