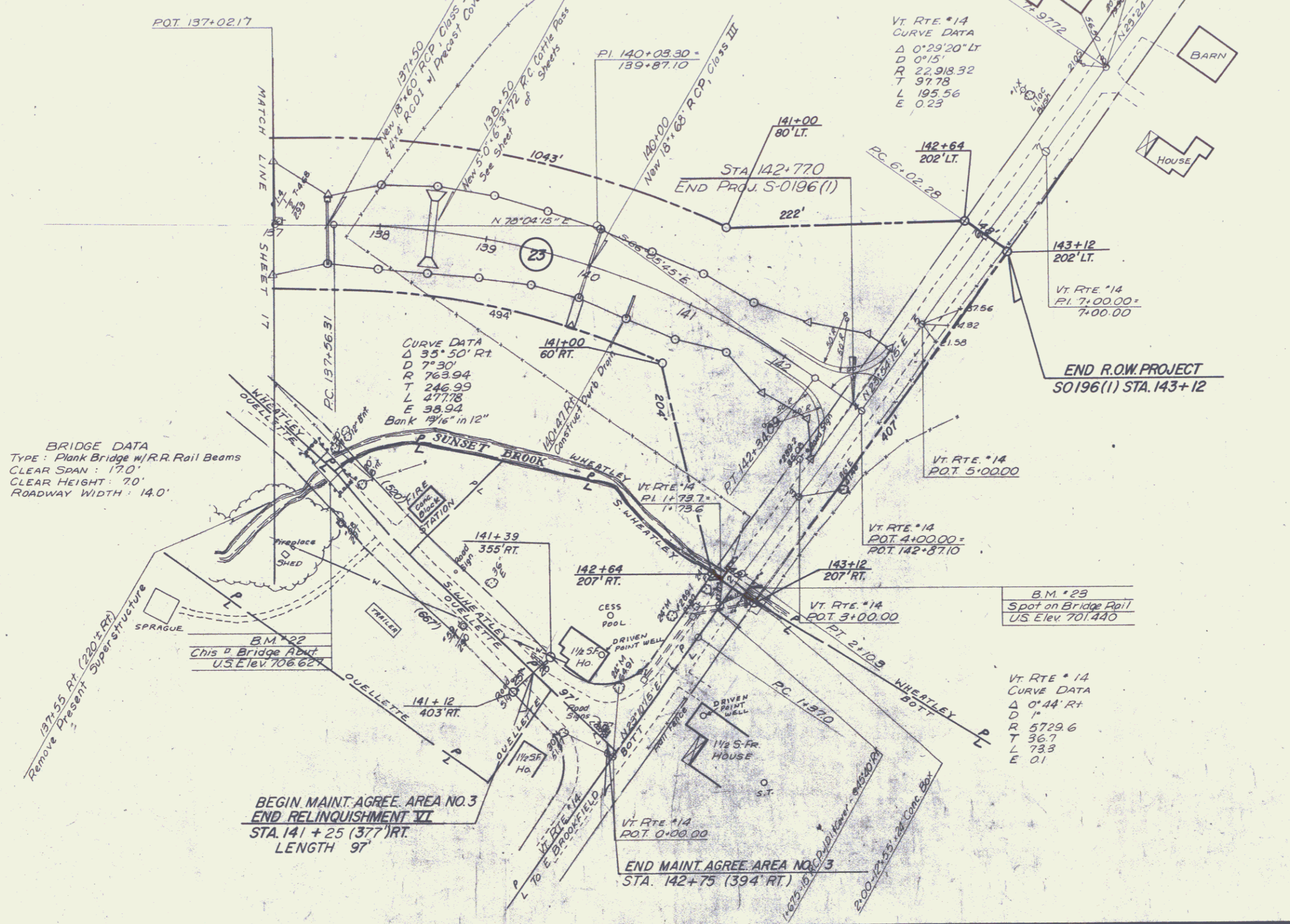


TWO CABLE GUARD RAIL
 LT 137+75-140+71 RT 137+75-140+47
 TREATED TIMBER CURB
 RT 137+75-140+47
 PAVED SHOULDERS
 (ITEM 361)
 RT 137+75-140+47
 CONSTRUCT BARRICADE
 (w/ 4 Wood Guide Posts 8' 96")
 RT 137+93 (205' RT)
 137+68 (245' RT)
 REMOVAL & DISPOSAL OF
 PRESENT GUARD RAIL
 RT 137+24-137+38
 137+41-137+50
 137+53-137+62
 137+65-137+77
 PLANK GUARD RAIL
 (for Barricades)
 RT 137+33 (161)
 137+68 (161)



BRIDGE DATA
 TYPE: Plank Bridge w/ R.R. Rail Beams
 CLEAR SPAN: 17.0'
 CLEAR HEIGHT: 7.0'
 ROADWAY WIDTH: 14.0'

CURVE DATA
 Δ 35° 50' RT
 D 7° 30'
 R 763.94
 T 246.99
 L 477.78
 E 38.94
 Bank 2 1/2" in 12"

VT RTE #14
 CURVE DATA
 Δ 0° 29' 20" LT
 D 0° 15'
 R 22,918.32
 T 97.78
 L 195.56
 E 0.25

B.M. #25
 Spot on Bridge Rail
 US Elev 701.40

VT RTE #14
 CURVE DATA
 Δ 0° 44' RT
 D 1"
 R 5729.6
 T 36.7
 L 733
 E 0.1

BEGIN MAINT. AGREE. AREA NO. 3
 END RELINQUISHMENT VI
 STA. 141+25 (377' RT)
 LENGTH 97'

END MAINT. AGREE. AREA NO. 3
 STA. 142+75 (394' RT)

MARTIN & JENNETT 7/11/62/65
 SURVEYED BY: KAVALLER DATE: 2-65
 DRAWN BY: BANKS DATE: 3-66
 TRACED BY: BANKS DATE: 3-66
 BROOKFIELD
 PROJ. 5 NO. 0196(1)
 SHEET 28A OF 28