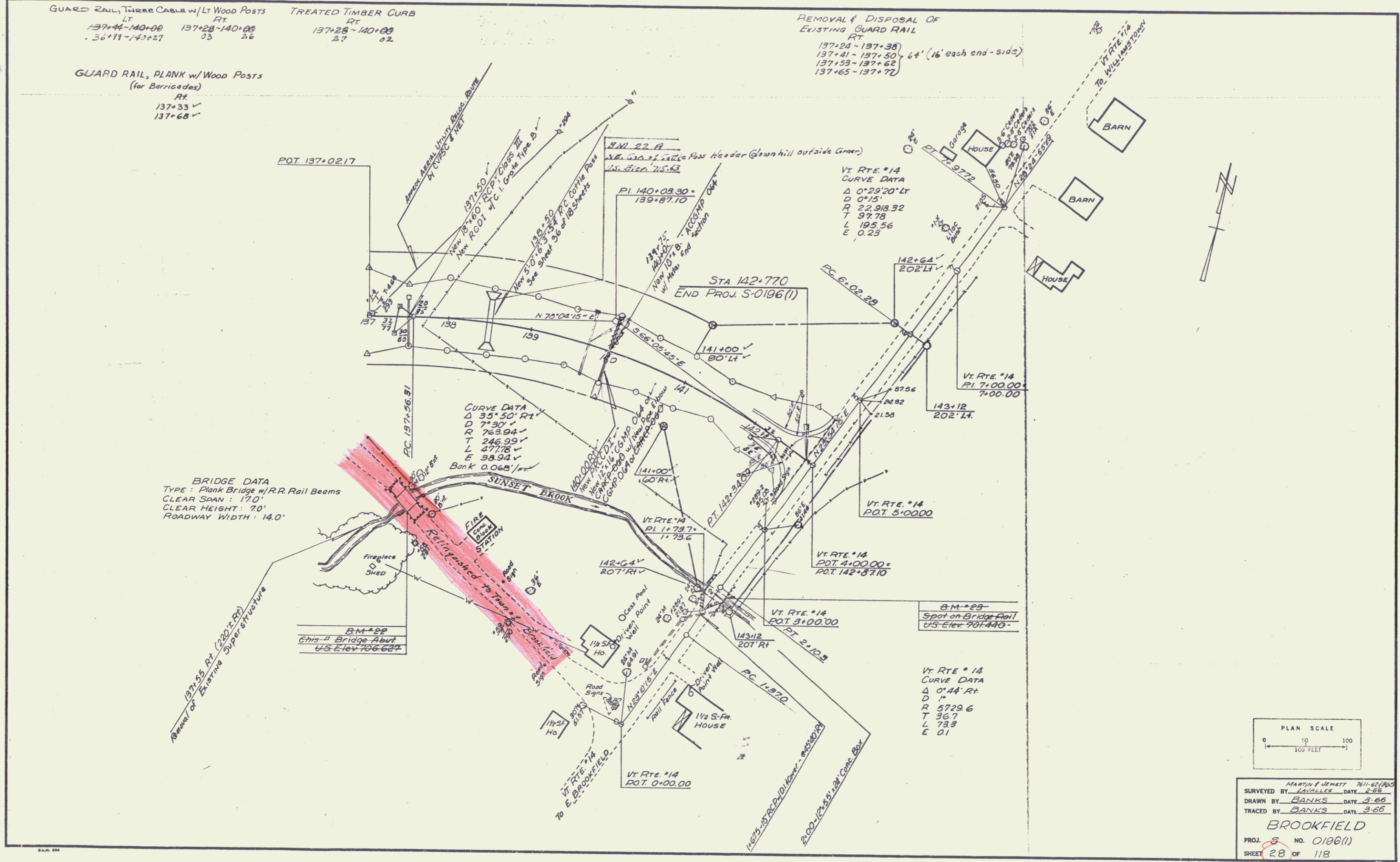


GUARD RAIL, THREE CABLE w/LT Wood Posts
 LT RT
 137+46-140+00 137+28-140+00
 -36+11-143+27 03 26 27 02

TREATED TIMBER CURB
 RT
 137+28-140+00
 27 02

GUARD RAIL, PLANK w/Wood Posts
 (for Barricades)
 RT
 137+33 ✓
 137+68 ✓

REMOVAL & DISPOSAL OF
 EXISTING GUARD RAIL
 RT
 137+24-137+38
 137+41-137+50
 137+53-137+62
 137+65-137+72 } 64' (16' each end-side)



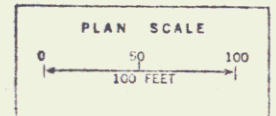
BRIDGE DATA
 TYPE: Plank Bridge w/RR Rail Beams
 CLEAR SPAN: 170'
 CLEAR HEIGHT: 20'
 ROADWAY WIDTH: 14.0'

137+53 Rt. (200+100)
 Removal of Existing Superstructure

BM #29
 Chis Bridge Abut
 U.S. Elev. 706.627

BM #29
 Spot on Bridge Rail
 U.S. Elev. 701.440

Vt. RTE #14
 CURVE DATA
 Δ 0'44" Rt
 D 11'
 R 5729.6
 T 36.7
 L 73.3
 E 01



MARTIN F. BARNETT 2/11/65
 SURVEYED BY: KAYLOR DATE: 2-65
 DRAWN BY: BANKS DATE: 3-66
 TRACED BY: BANKS DATE: 3-66
BROOKFIELD
 PROJ. NO. 0196(1)
 SHEET 28 OF 118

28