

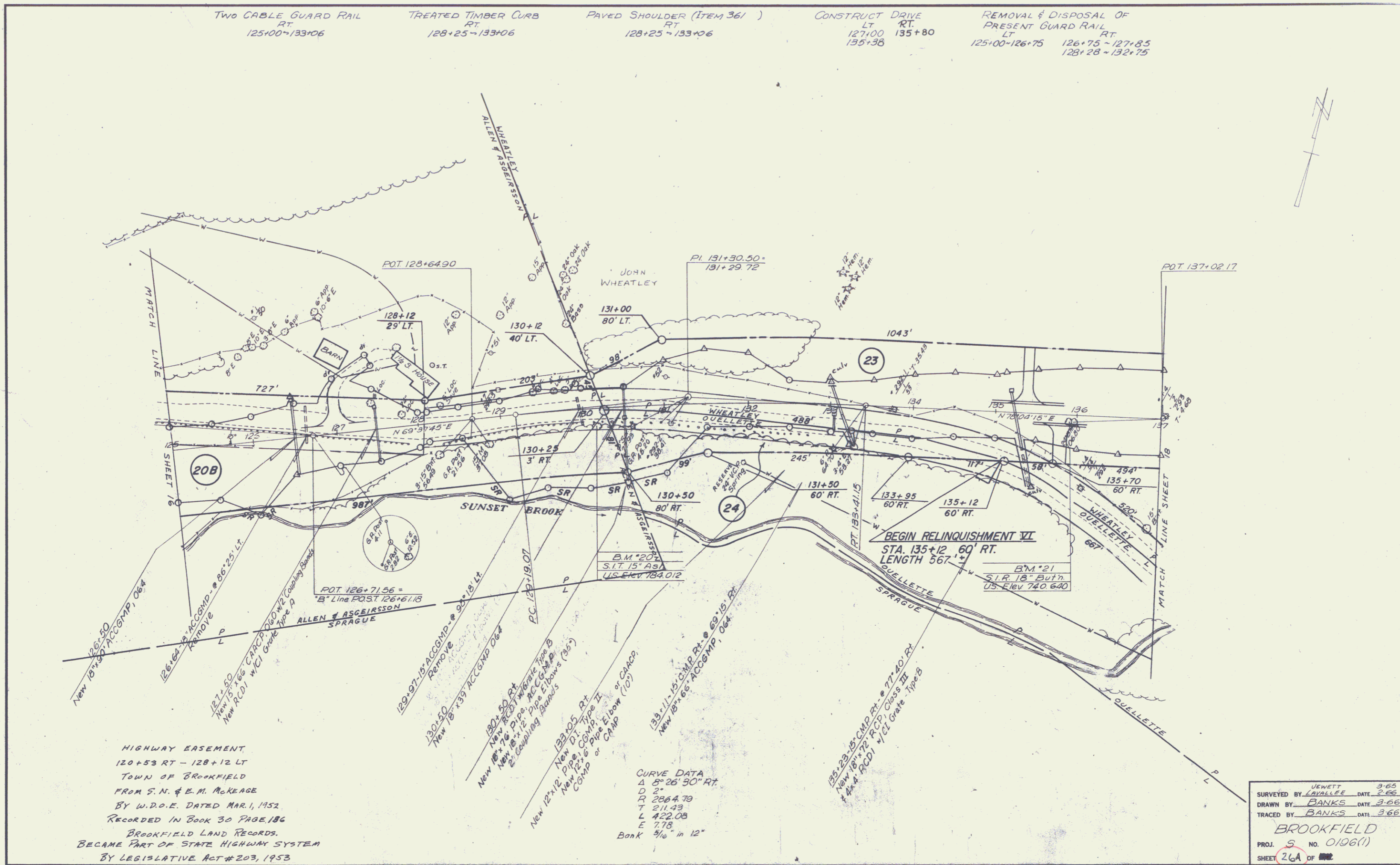
TWO CABLE GUARD RAIL
RT.
125+00 ~ 133+06

TREATED TIMBER CURB
RT.
128+25 ~ 133+06

PAVED SHOULDER (ITEM 361)
RT.
128+25 ~ 133+06

CONSTRUCT DRIVE
LT.
127+00
RT.
135+80
135+38

REMOVAL & DISPOSAL OF
PRESENT GUARD RAIL
LT.
125+00 ~ 126+75
RT.
126+75 ~ 127+85
128+28 ~ 132+75



HIGHWAY EASEMENT
120+53 RT - 128+12 LT
TOWN OF BROOKFIELD
FROM S. N. & E. M. McKEAGE
BY W.D.O.E. DATED MAR. 1, 1952
RECORDED IN BOOK 30 PAGE 186
BROOKFIELD LAND RECORDS
BECAME PART OF STATE HIGHWAY SYSTEM
BY LEGISLATIVE ACT # 203, 1953

CURVE DATA
Δ 8° 26' 30" RT.
D 2'
R 2864.79
T 211.43
L 422.08
E 7.75
Bank 9/16" in 12"

SURVEYED BY UENWETT DATE 3-65
DRAWN BY BANKS DATE 3-66
TRACED BY BANKS DATE 3-66
BROOKFIELD
PROJ. S NO. 0106(1)
SHEET 26A OF 266