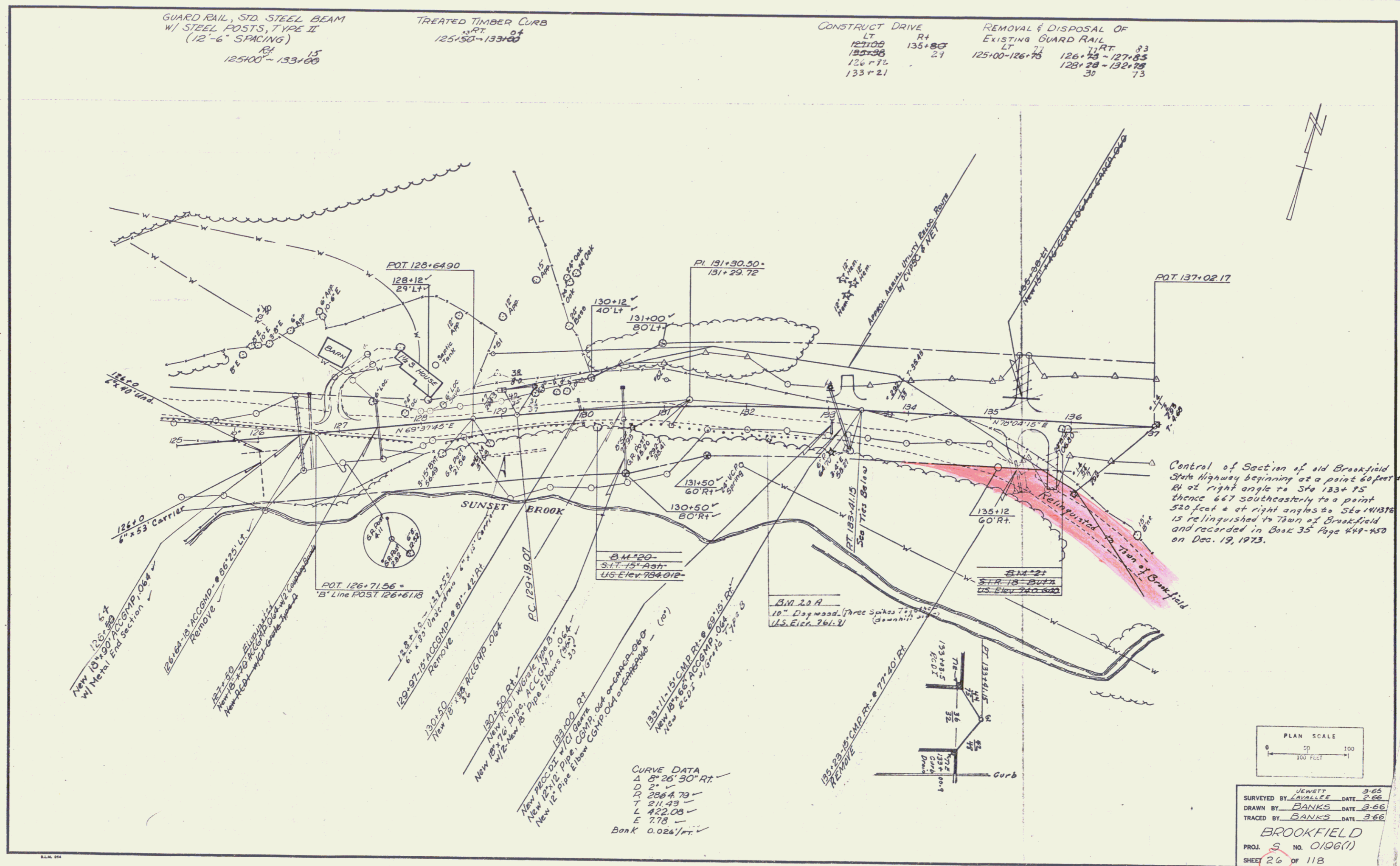


GUARD RAIL, STD. STEEL BEAM
W/ STEEL POSTS, TYPE II
(12'-6" SPACING)
RT 125100-133160

TREATED TIMBER CURB
RT 125150-133160

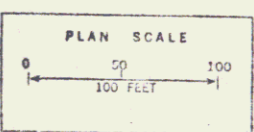
CONSTRUCT DRIVE
LT 127100
RT 135180
126+74
133+21

REMOVAL & DISPOSAL OF
EXISTING GUARD RAIL
LT 125100-126+75
RT 126+75-127+85
128+28-132+75
73



Control of Section of old Brookfield State Highway beginning at a point 60 feet Rt at right angle to Sta 133+75 thence 667 southeasterly to a point 520 feet & at right angles to Sta 141B7E is relinquished to Town of Brookfield and recorded in Book 35 Page 449-450 on Dec. 19, 1973.

CURVE DATA
A 6° 26' 30" RT
D 2'-"
R 2864.73
T 211.43
L 422.08
E 7.78
Bank 0.026'/ft



SURVEYED BY JEWETT DATE 3-65
DRAWN BY BANKS DATE 3-66
TRACED BY BANKS DATE 3-66
BROOKFIELD
PROJ. S. NO. 0106(1)
SHEET 26 OF 118