

**CONSTRUCTION NOTES**  
 Drives Are To Be Constructed To A Minimum Width of 12 Feet With A Minimum Radius of 20 Feet On The Flare Or As Indicated On The Plans or As Directed By The Engineer.

TREATED TIMBER CURB LT. 0  
 39120-4100 RT.  
 CONSTRUCT SPECIAL DITCH (to be Paid Under Item 203.15)  
 LT. 61 RT. 1  
 46+80 39100 41+73

CONSTRUCT DRIVE LT. 61 RT. 1  
 46+80 39100 41+73

CONSTRUCT APPROACH LT. RT.  
 45+50 39100  
 44+69 42+00  
 Drive approaches to a pt. opposite S.W. Corner of Congregational Church

STONE FILL, TYPE II LT. RT.  
 38160-40+89

DEMOLITION & DISPOSAL OF BUILDING LT. RT.  
 46150 (Rt.)

STONE FILL, TYPE I LT. RT.  
 47100 - 47+75

UNCLASSIFIED CHANNEL EXCAVATION LT. RT.  
 38160-40+89

GUARD RAIL, THREE CABLE w/ 11 Wood Posts LT. RT.  
 37+20-43+40 (12'-0" Spacing)

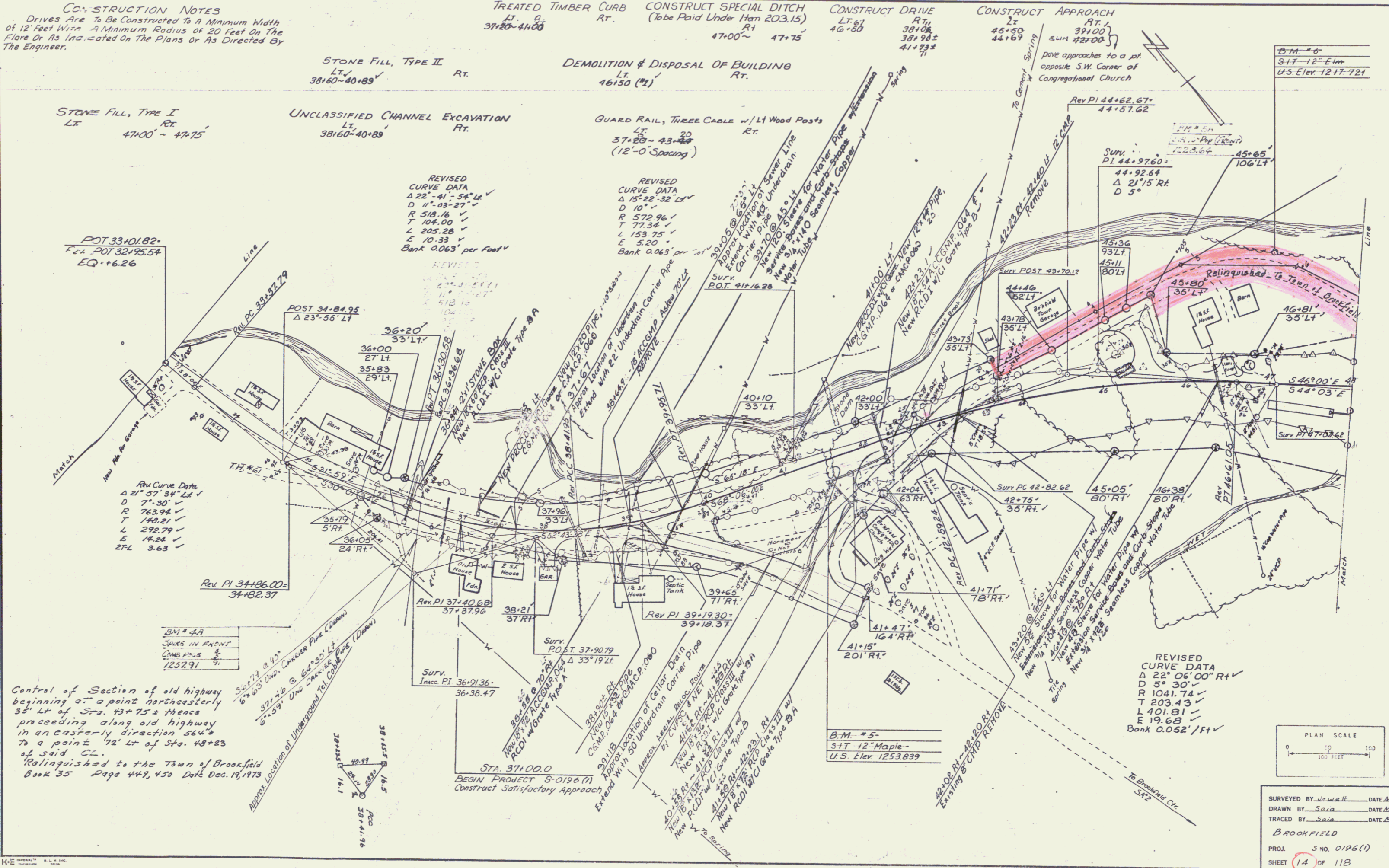
REVISED CURVE DATA  
 $\Delta 22^\circ 41' 34" \text{ Lt}$   
 $D 11^\circ 03' 27" \text{ V}$   
 $R 518.14$   
 $T 104.00$   
 $L 205.28$   
 $E 10.33$   
 Bank 0.063' per Foot V

REVISED CURVE DATA  
 $\Delta 15^\circ 22' 32" \text{ Lt}$   
 $D 10^\circ \text{ V}$   
 $R 572.96$   
 $T 77.34$   
 $L 153.75$   
 $E 5.20$   
 Bank 0.063' per Foot V

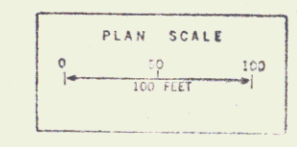
REVISED CURVE DATA  
 $\Delta 21^\circ 15' \text{ Rt}$   
 $D 5^\circ \text{ V}$

REVISED CURVE DATA  
 $\Delta 22^\circ 06' 00" \text{ Rt}$   
 $D 5^\circ 30' \text{ V}$   
 $R 1041.74$   
 $T 203.43$   
 $L 401.81$   
 $E 19.68$   
 Bank 0.052' / Ft V

POT 33+01.82  
 Elev. POT 32+95.54  
 EQ +6.26



Central of Section of old highway beginning at a point northeasterly 35' Lt of Sta. 43+75 & thence proceeding along old highway in an easterly direction 564' to a point 72' Lt of Sta. 48+23 of said CL.  
 Relinquished to the Town of Brookfield Book 35 Page 449, 450 Date Dec. 19, 1973



SURVEYED BY W. W. H. H. DATE Mar. 1974  
 DRAWN BY S. A. S. DATE Mar. 1974  
 TRACED BY S. A. S. DATE Mar. 1974  
 BROOKFIELD  
 PROJ. S NO. 0196(1)  
 SHEET 14 OF 118