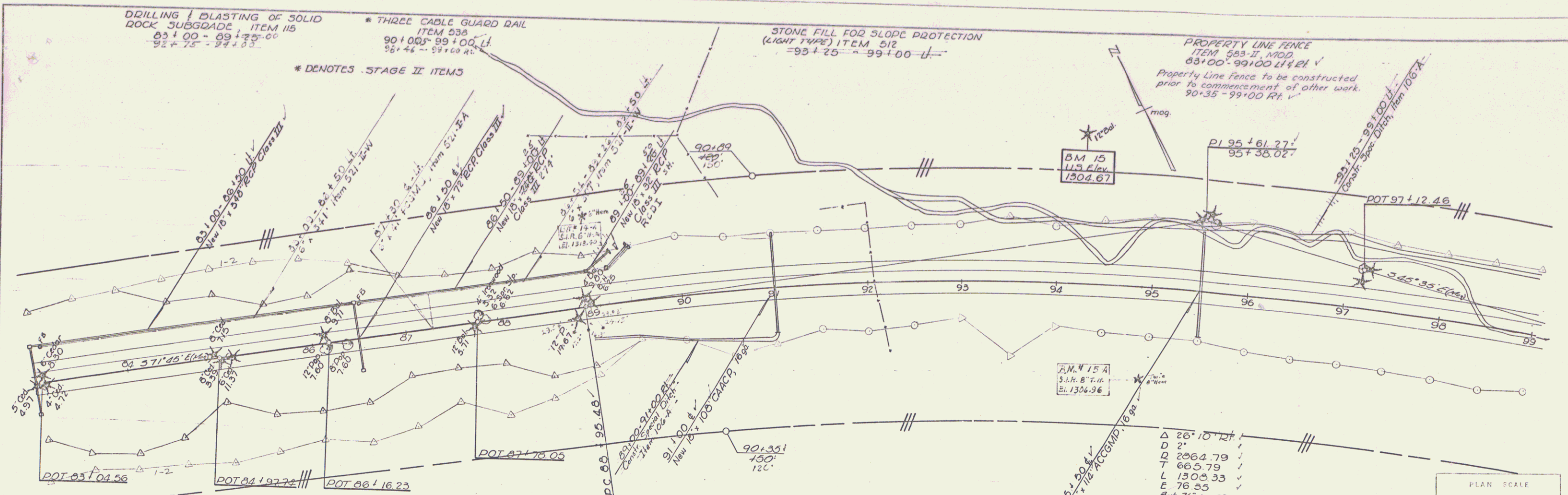
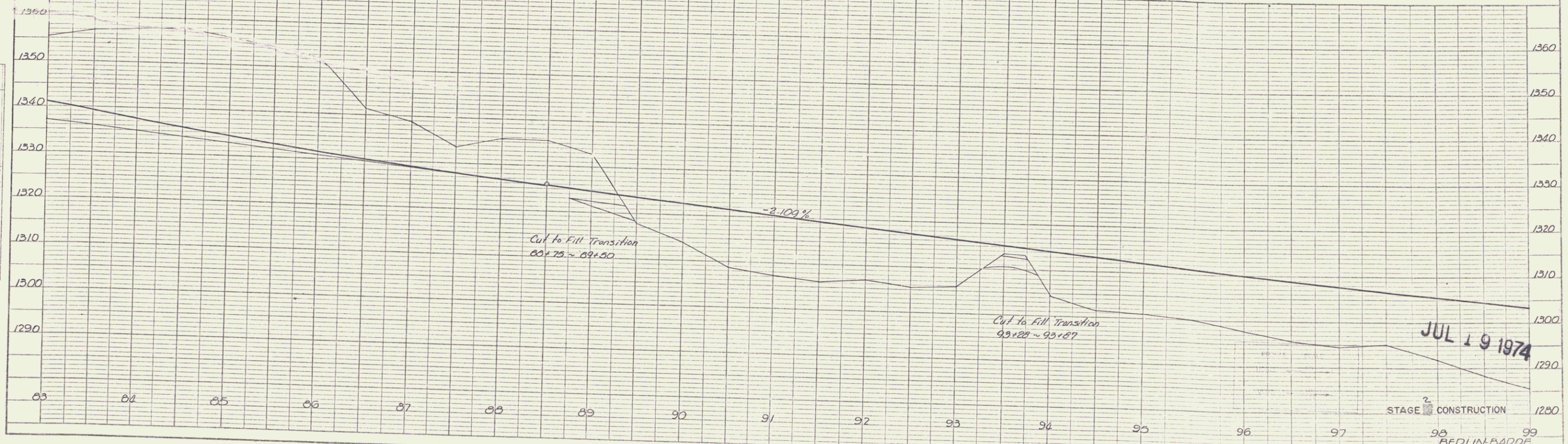


PLAN
 DRAWN BY: *Tracy*
 CHECKED BY: *Tracy*
 DATE: 8/65
 NO. 410



STAGE 2 FINISHED GRADES SHOWN.
 STAGE 1 SUBGRADE ELEVATION 2.67 FEET
 (2 FT. 8 IN.) BELOW.



PROFILE
 DRAWN BY: *Tracy*
 CHECKED BY: *Tracy*
 DATE: 8/65
 NO. 410

PLATE 1. PLAN PROFILE
 RUPPEL & FISHER CO.
 48 7012 IMPERIAL, CHICAGO, ILL. 60611

JUL 19 1974

98 BERLIN-BADGE
 E 1137-11 (4)
 Sheet 93 of 105