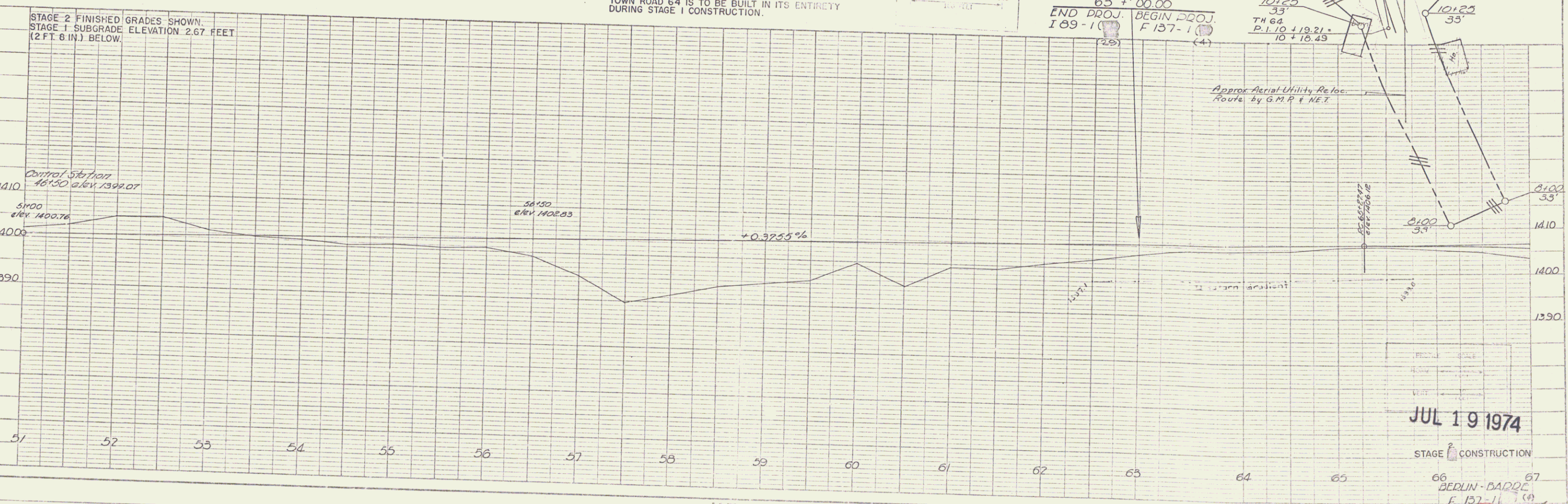
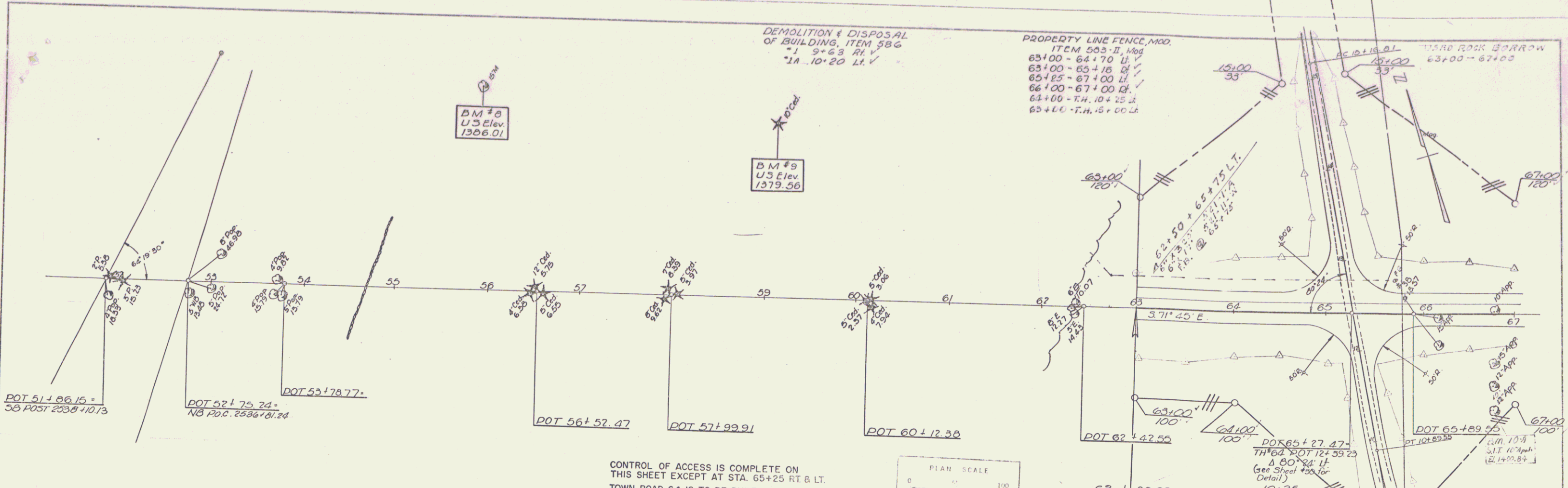


PLAN  
 NO. 665  
 DATE 7/19/74  
 DRAWN BY [Signature]  
 CHECKED BY [Signature]  
 IN CHARGE [Signature]

PROFILE  
 NO. 665  
 DATE 7/19/74  
 DRAWN BY [Signature]  
 CHECKED BY [Signature]  
 IN CHARGE [Signature]



CONTROL OF ACCESS IS COMPLETE ON THIS SHEET EXCEPT AT STA. 65+25 RT & LT. TOWN ROAD 64 IS TO BE BUILT IN ITS ENTIRETY DURING STAGE I CONSTRUCTION.

JUL 19 1974

STAGE I CONSTRUCTION

66 BERLIN-BARRE 67  
 F. 137-1 (4)  
 Sheet 37 of 105