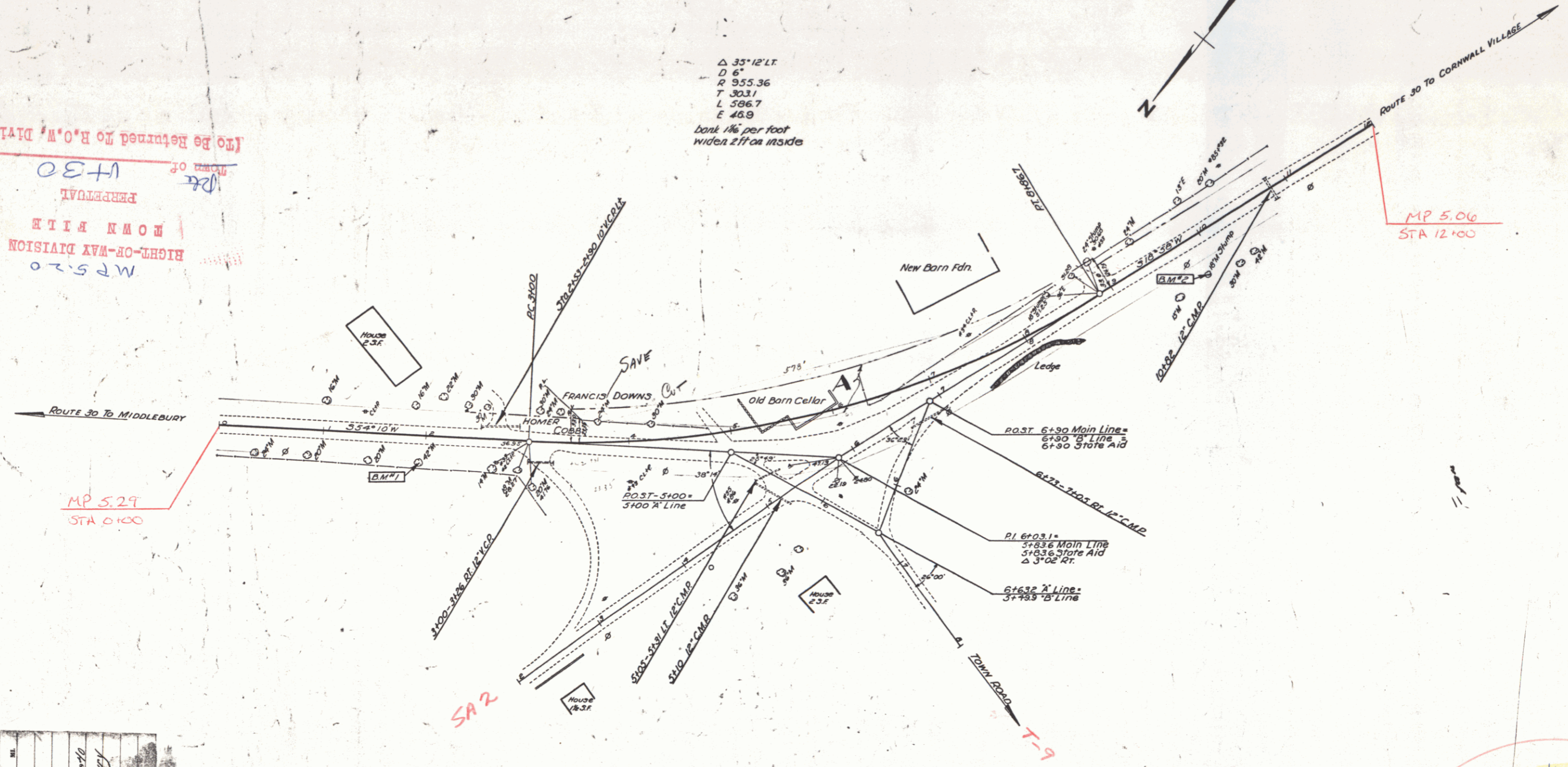


| PARCEL INSTRUMENT DATE | GRANTOR               | GRANTEE  | RECORDED | REMARK |
|------------------------|-----------------------|----------|----------|--------|
| 12-18-40               | FRANCIS L. MARY DOWNY | ST OF VT | CORNWALL |        |

| FED. ROAD DIST. NO. | STATE | FED. AID PROJ. NO. | FISCAL YEAR | SHEET NO. | TOTAL SHEETS |
|---------------------|-------|--------------------|-------------|-----------|--------------|
| 8                   | VT    |                    |             | 1         | 1            |

$\Delta 33^{\circ}12'LT$   
 $D 6'$   
 $R 955.36$   
 $T 303.1$   
 $L 586.7$   
 $E 46.9$   
 Bank 1/4" per foot  
 widen 2 ft on inside

(To Be Returned to R.O.W. Division)  
 MP 5.20  
 HIGHWAY DIVISION  
 HOME FILE  
 PERPETUAL  
 1130



PROJECT: Cornwall  
 NUMBER: App 662  
 DATE: 12-13-40  
 TYPE: Mixed-in-place surface course  
 CONTRACTOR:  
 YEAR 1940  
 LOCATION: On Route 30 - Between Middlebury and Cornwall Villages  
 No. 1138  
 21 Sta 9+86

| ESTIMATED QUANTITIES |  |
|----------------------|--|
|                      |  |

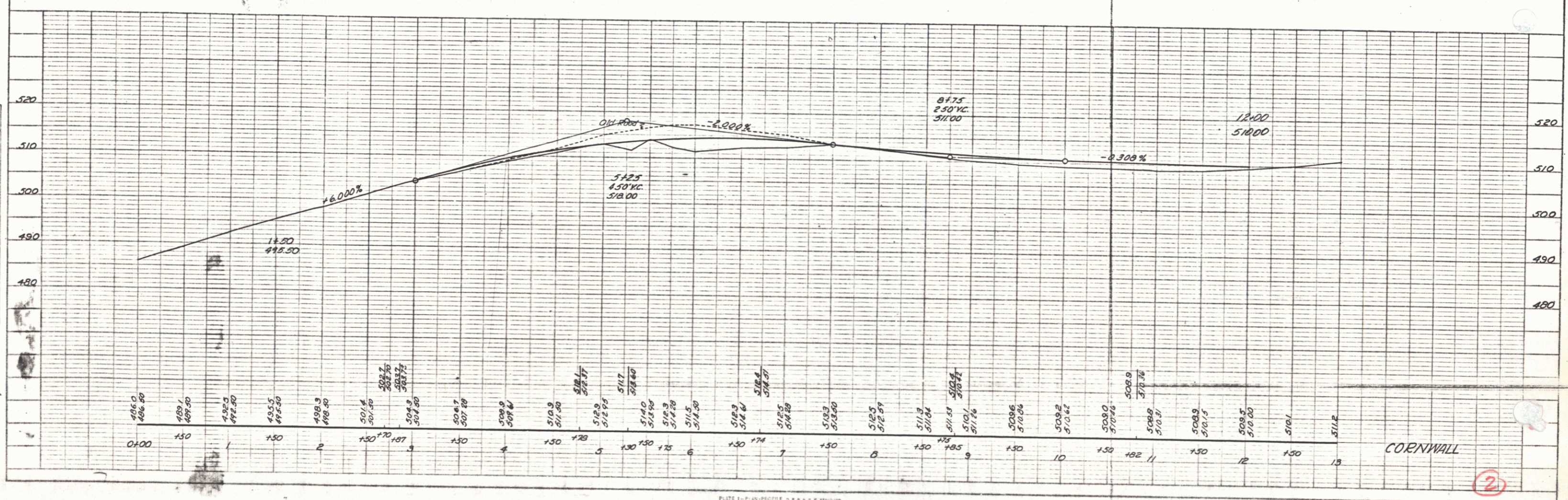
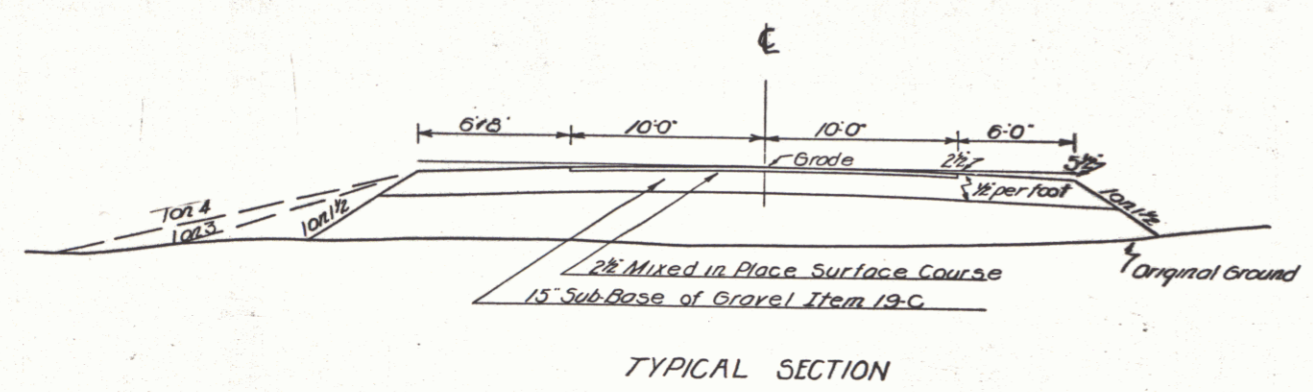
Route Vt30  
 Pin OOR 3.90  
 Date 12/13/1940  
 Project CORNWALL APP 662

Surveyed by STICKNEY 12  
 Designed by JOC 12-13-40  
 Traced by JOC 12-13-40  
 Checked by JOC  
 Series No. Filed  
 Sheet 1 of Sheets

DIST. # 5 PLANS

PLAN  
 PROJECT NO. 12-70  
 DRAWN BY J. C. WILSON  
 CHECKED BY M. J. WILSON  
 DATE 12-70  
 NOTE: BOND COLUMNS CHECKED  
 NO. 1000  
 CONTRACT NO. 12-70

PROFILE  
 PROJECT NO. 12-70  
 DRAWN BY J. C. WILSON  
 CHECKED BY M. J. WILSON  
 DATE 12-70  
 NOTE: BOND COLUMNS CHECKED  
 NO. 1000  
 CONTRACT NO. 12-70



CORNWALL

2