

INDEX OF SHEETS

SHEET NO. 1	TITLE PAGE
2	TYPICAL CROSS-SECTION OF IMPROVEMENT (DOUBLE TACK COAT OF REFINED TAR WITH PEA STONE SEAL, ITEM 29A.)
3	BANKING AND WIDENING TABLES
4-12	PLAN AND PROFILE
13	STANDARD STRUCTURE SHEET S 28 PIPE CULVERTS
14	" " " " S 30A BOUNDARY MARKERS
15	" " " " S 40 BARRICADES, SIGNS, & LIGHTS
16	" " " " S 41 ROUNDING OF SLOPES
17-35	CROSS SECTIONS

STATE OF VERMONT
STATE HIGHWAY DEPARTMENT

PLAN AND PROFILE OF PROPOSED
STATE HIGHWAY
SECONDARY PROJECT

FED. ROAD DIST. NO.	STATE	PROJ. NO.	FISCAL YEAR	SHEET NO.	TOTAL SHEETS
9	Vt.	34 (2)	1947	1	35

STANDARD STRUCTURE SHEETS APPROVED
BY THE CHIEF ENGINEER
VERMONT STATE DEPARTMENT OF HIGHWAYS

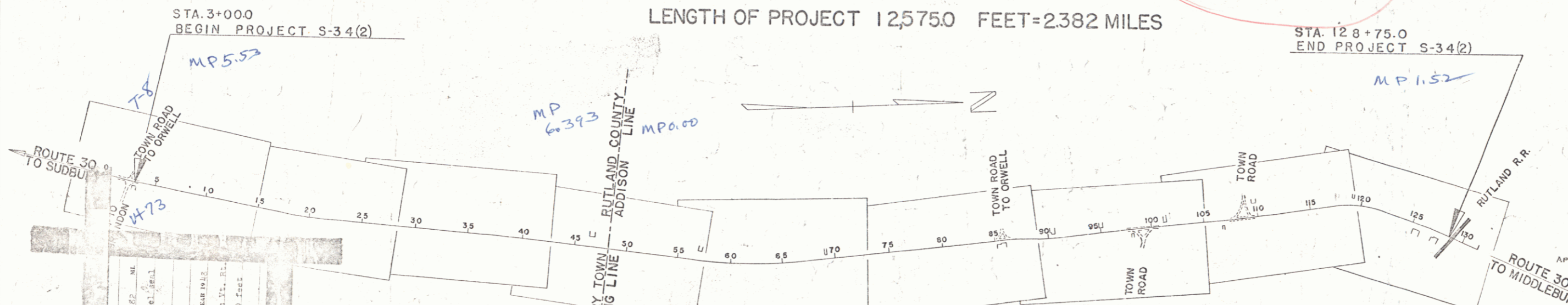
S 28 APRIL 26, 1941
S 30A " 19, 1941
S 40 DEC. 18, 1945

TOWNS OF SUDBURY-WHITING
VERMONT ROUTE 30
CASTLETON CORNERS-MIDDLEBURY ROAD

Route 30
Project S-34(2)
Pin OOR 389
Date 7/30/1948

BEGINNING AT A POINT APPROXIMATELY 50.0 FEET
NORTHERLY FROM VERMONT ROUTE F 10 IN SUDBURY AND
EXTENDING NORTHERLY 12,575.0 FEET.

LENGTH OF PROJECT 12,575.0 FEET=2.382 MILES



CONTRACT NO.	LENGTH	DATE
7-30-48	2.382	July 30, 1948
DESCRIPTION		
SUDBURY-WHITING 5-34(2) RECORD PLANS CONSTRUCTION COMP. 7-30-48 CONTRACTOR: F. W. WHITCOMB		

DEFLECTION ANGLE.....	Δ
DEGREE OF CURVE.....	D
RADIUS OF CURVE.....	R
TANGENT DISTANCE.....	T
LENGTH OF CURVE.....	L
EXTERNAL DISTANCE.....	E
POINT OF INTERSECTION.....	P. I.
POINT OF CURVE.....	P. C.
POINT OF TANGENT.....	P. T.
POINT ON TANGENT.....	P. O. T.

RECORD PLANS

PREPARED UNDER THE DIRECTION OF A. W. LANE
BY
BYRON BLANCHARD - RESIDENT ENGINEER

RIGHT-OF-WAY DIVISION
TOWN FILE
PERPETUAL
Plan of Ut 30
(To Be Returned To R.O.W. Division)

THESE PLANS ARE SUBJECT TO SUCH REVISIONS AS MAY BE REQUIRED BY THE PUBLIC ROADS ADMINISTRATION OR THE COMMISSIONER OF HIGHWAYS.

CONSTRUCTION IS TO BE CARRIED ON IN ACCORDANCE WITH THE PLANS AND THE STANDARD ROAD AND BRIDGE SPECIFICATIONS OF 1936, AS APPROVED DECEMBER 29TH, 1936 BY THE PUBLIC ROADS ADMINISTRATION, INCLUDING ALL SUBSEQUENT APPROVED REVISIONS AND SUCH REVISED SPECIFICATIONS AND SPECIAL PROVISIONS AS ARE SUBMITTED WITH THE PLANS.

APPROVED: *20 August 1947*
H. E. Langford
COMMISSIONER OF HIGHWAYS

RECOMMENDED FOR APPROVAL
DISTRICT ENGINEER
PUBLIC ROADS ADMINISTRATION
FEDERAL WORKS AGENCY

APPROVED
DIVISION ENGINEER
PUBLIC ROADS ADMINISTRATION
FEDERAL WORKS AGENCY

APPROVED: *[Signature]*
HIGHWAY ENGINEER
APPROVED: *[Signature]*
DISTRICT HIGHWAY COMMISSIONER
SERIES - S NO. 34(2) FILED
SHEET 1 OF 32