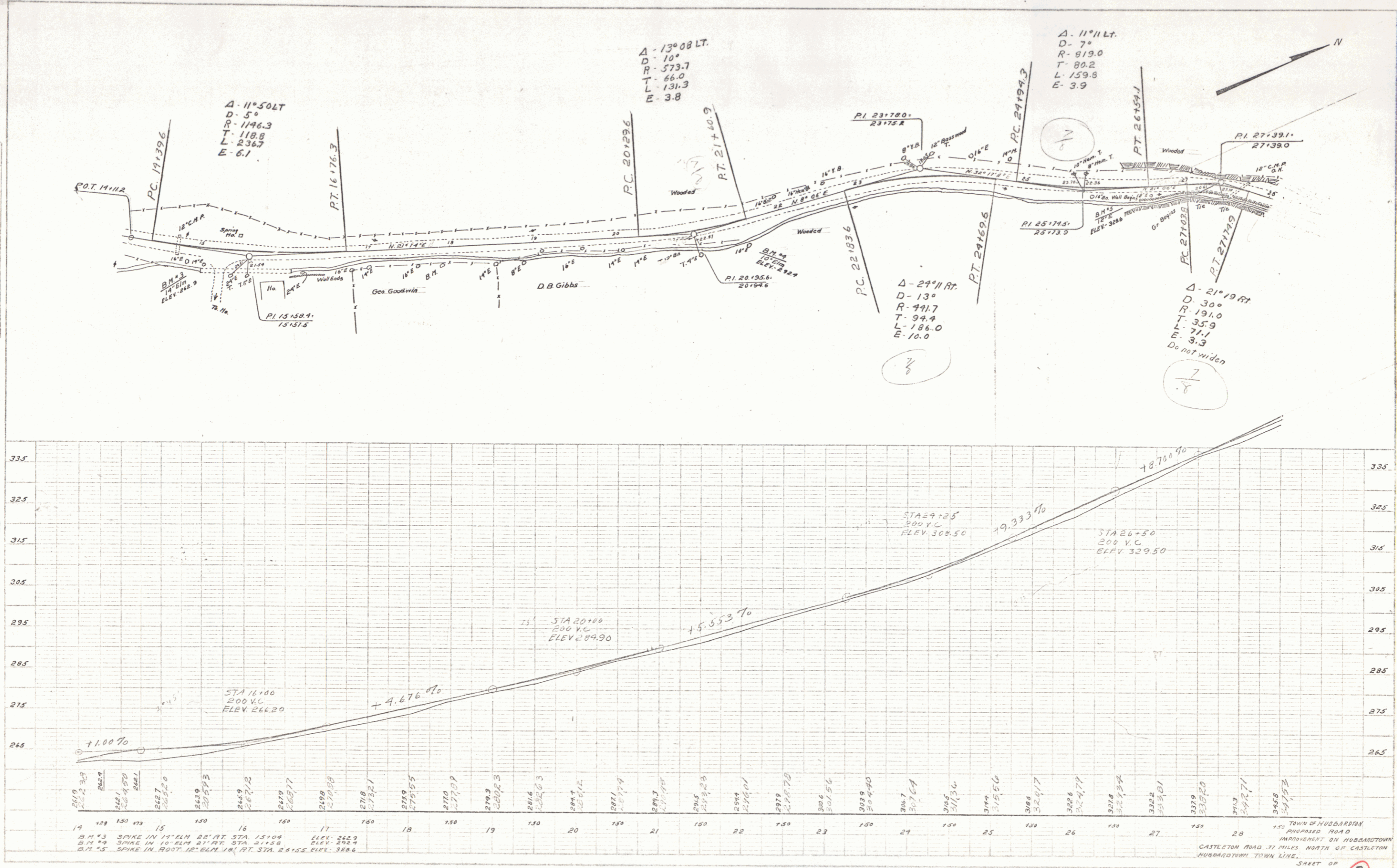




PLAN  
 DATE: 11/15/12  
 DRAWN BY: J. W. HARRIS  
 CHECKED BY: J. W. HARRIS  
 NOTE: ROAD TO BE WIDENED TO 24'.



14 128 150 173 15 150 160 170 180 190 200 210 220 230 240 250 260 270 280 290 300 310 320 330 340 350 360 370 380 390 400 410 420 430 440 450 460 470 480 490 500 510 520 530 540 550 560 570 580 590 600 610 620 630 640 650 660 670 680 690 700 710 720 730 740 750 760 770 780 790 800 810 820 830 840 850 860 870 880 890 900 910 920 930 940 950 960 970 980 990 1000

B.M. #3 SPIKE IN 1" ALM. 22' AT STA. 15+09 ELEV. 262.9  
 B.M. #4 SPIKE IN 10" ALM. 21' AT STA. 21+58 ELEV. 282.4  
 B.M. #5 SPIKE IN ROOT 12" ALM. 18' AT STA. 28+55 ELEV. 328.6

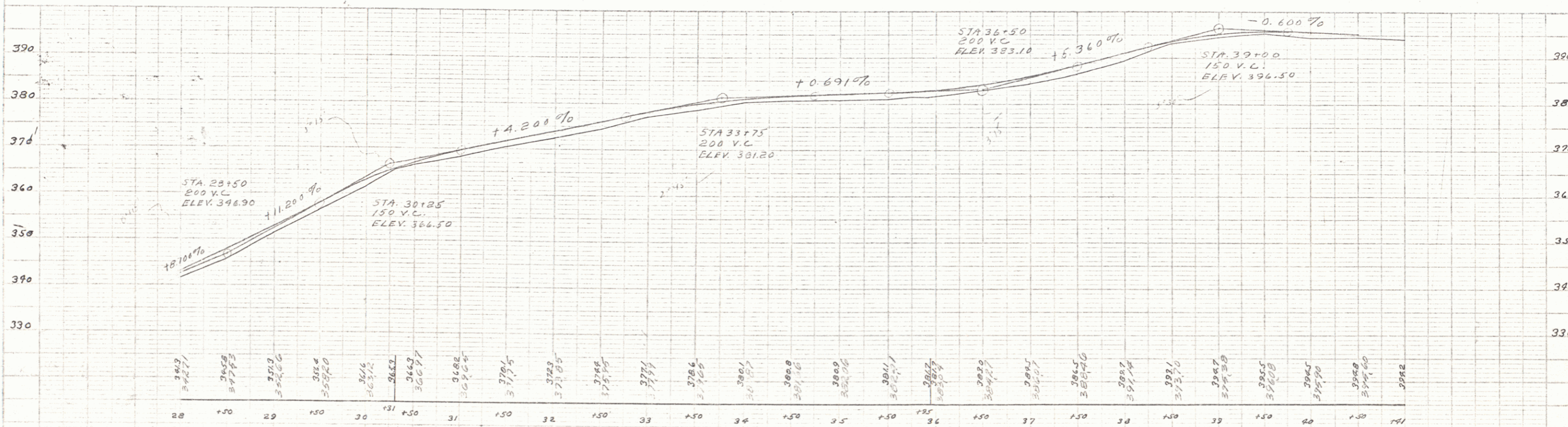
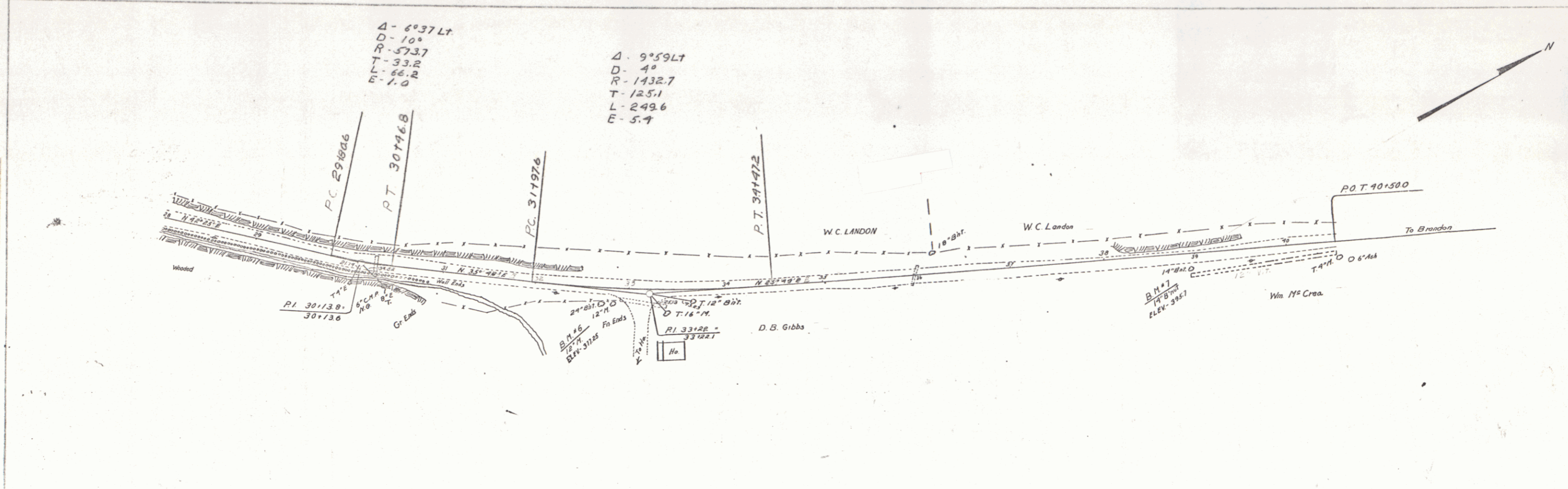
TOWN OF HUBBARDTON  
 IMPROVED ROAD  
 INTERSECTING ON HUBBARDTOWN  
 CASTLETON ROAD 77 MILES NORTH OF CASTLETON  
 HUBBARDTOWN TOWN LINE.

SHEET OF 2  
 J. W. HARRIS

PLAN  
 DATE  
 DRAWN BY  
 CHECKED BY  
 NO.

Δ - 6°37'LT  
 D - 10°  
 R - 573.7  
 T - 33.2  
 L - 66.2  
 E - 1.0

Δ - 9°59'LT  
 D - 4°  
 R - 1432.7  
 T - 125.1  
 L - 249.6  
 E - 5.7



B.M. 6 SPIKE IN ROOT 12" MAPLE 25' AT STA. 30+00 ELEV. 3112.5  
 B.M. 7 SPIKE IN 18" BUTTERNUT 20' AT STA. 38+24 ELEV. 3967

TOWN OF HUBBARDTON  
 PROPOSED ROAD IMPROVEMENT ON  
 HUBBARDTOWN CASTLETON ROAD .77  
 MILES NORTH OF CASTLETON-HUBBARDTOWN  
 TOWN LINE SHEET OF