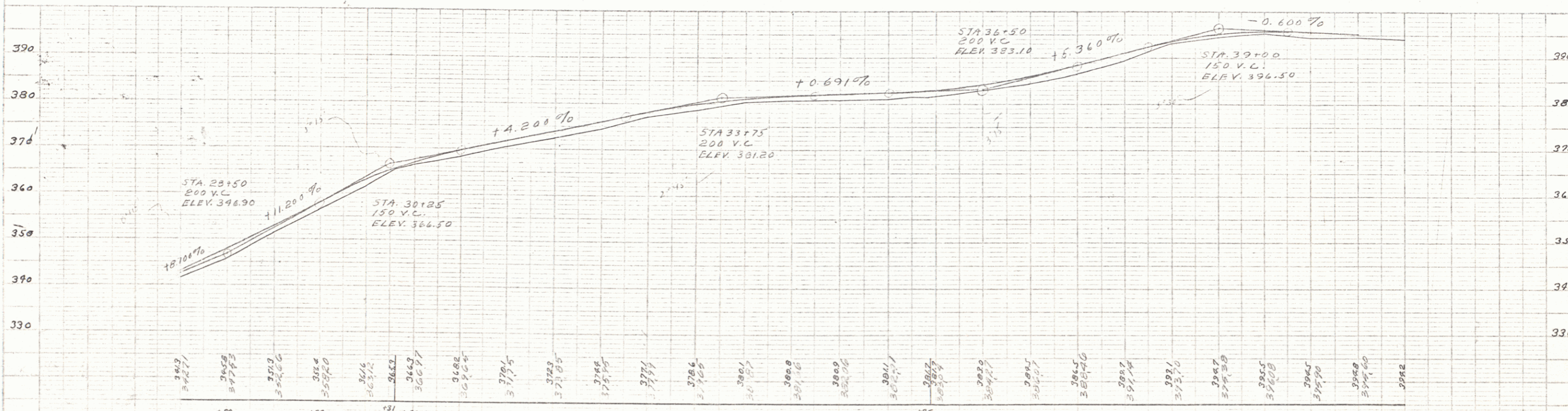
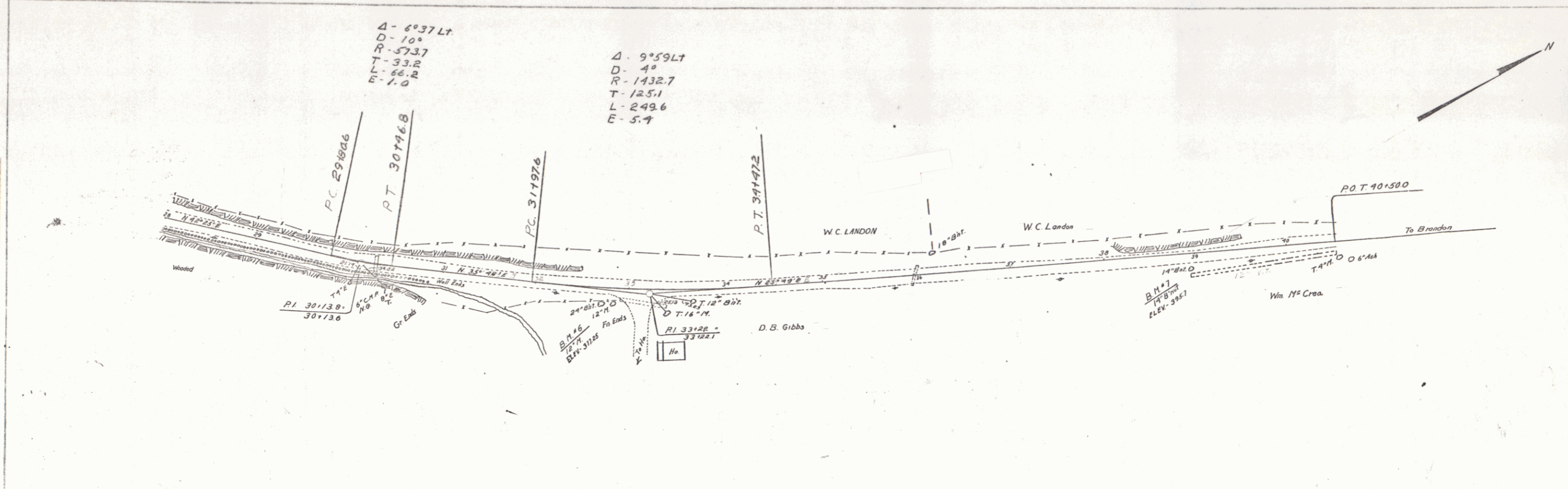


PLAN  
 SCALE 1" = 40'  
 DATE  
 DRAWN BY  
 CHECKED BY

Δ - 6°37'LT  
 D - 10°  
 R - 573.7  
 T - 33.2  
 L - 66.2  
 E - 1.0

Δ - 9°59'LT  
 D - 4°  
 R - 1432.7  
 T - 125.1  
 L - 249.6  
 E - 5.7



B.M. #6 SPIKE IN ROOT 12" MAPLE 25' AT STA. 30+00 ELEV. 396.90  
 B.M. #7 SPIKE IN 18" BUTTERNUT 20' AT STA. 38+24 ELEV. 396.50

TOWN OF HUBBARDTON  
 PROPOSED ROAD IMPROVEMENT ON  
 HUBBARDTOWN CASTLETON ROAD .77  
 MILES NORTH OF CASTLETON-HUBBARDTOWN  
 TOWN LINE SHEET OF 3