

INDEX OF SHEETS

SHEET NUMBER	TITLE PAGE
1	TITLE PAGE
2	TYPICAL CROSS SECTION OF IMPROVEMENT (DOUBLE TACK COAT OF BITUMINOUS MATERIAL WITH PEA STONE AND STONE GRITS SEAL) (PRIME COAT OF REFINED TAR AND DOUBLE SEAL COAT OF CUTBACK ASPHALT, ITEM 315)
3	QUANTITY SHEET (ITEM & DRAINAGE)
4	EARTHWORK SHEET
5	DETAILS OF 15'-10" x 9'-10" COMPPA AT STA. 19+65
6-8	CHANNEL SECTIONS
9	RS 56-1
10	RS 56-3
11	RS 56-4
12	RS 56-6
13	RS 56-10
14	RS 56-12
15	PLAN & PROFILE
16-20	CROSS SECTIONS

PROJECT NAME & NUMBER	TYPE	PAVEMENT AREA
CASTLETON - DS-0161(1)	3" CRUSHED GRAVEL PLANT MIXED DOUBLE TACK COAT OF BITUMINOUS MATERIAL WITH PEA STONE AND STONE GRITS SEAL, PRIME COAT OF REFINED TAR, AND DOUBLE SEAL COAT OF CUTBACK ASPHALT	3195 s.y.

RECORD PLANS
MATERIALS

SUBBASE OF GRAVEL - GREER PIT - POULTNEY, VERMONT.
 CRUSHED GRAVEL (PLANT MIXED) - VT. MARBLE CO. - FLORENCE, VERMONT.
 CUTBACK ASPHALT - SUGCONY - E. PROVIDENCE, RHODE ISLAND.
 REFINED TAR - KOPPER PRODUCTS CO. - EVERETT, MASS.
 ACCUMETAL PIPE - NORTH EASTERN CULVERT CO. - WESTMINSTER, VT.
 RIPRAP - NORTHTRUP SLATE QUARRY - CASTLETON, VT.
 T/WO CABLE GUARD RAIL - BETHLEHEM STEEL CO. (GARRONS PT. MD.)
 WOOD GUIDE POSTS - S. T. GIBSWOLD CO. - ESSEX JUNCTION, VERMONT.
 CONTRACTOR - EARL & MERRY
 RESIDENT ENGINEER - ROBERT ARONSON
 RECORD PLANS - A.G. SPIDLE
 CONTRACT DATE - NOVEMBER 20, 1958
 CONTRACT STARTED - DECEMBER 8, 1958
 CONTRACT COMPLETED - JULY 10, 1959
 CONTRACT ACCEPTED - JULY 10, 1959.

STATE OF VERMONT
DEPARTMENT OF HIGHWAYS

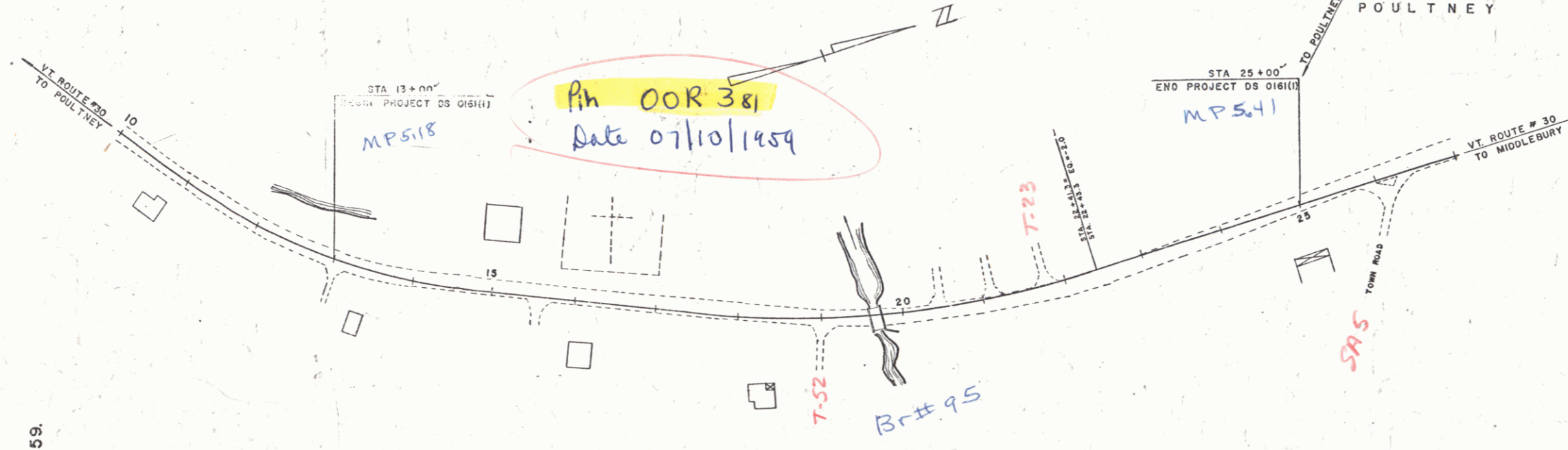
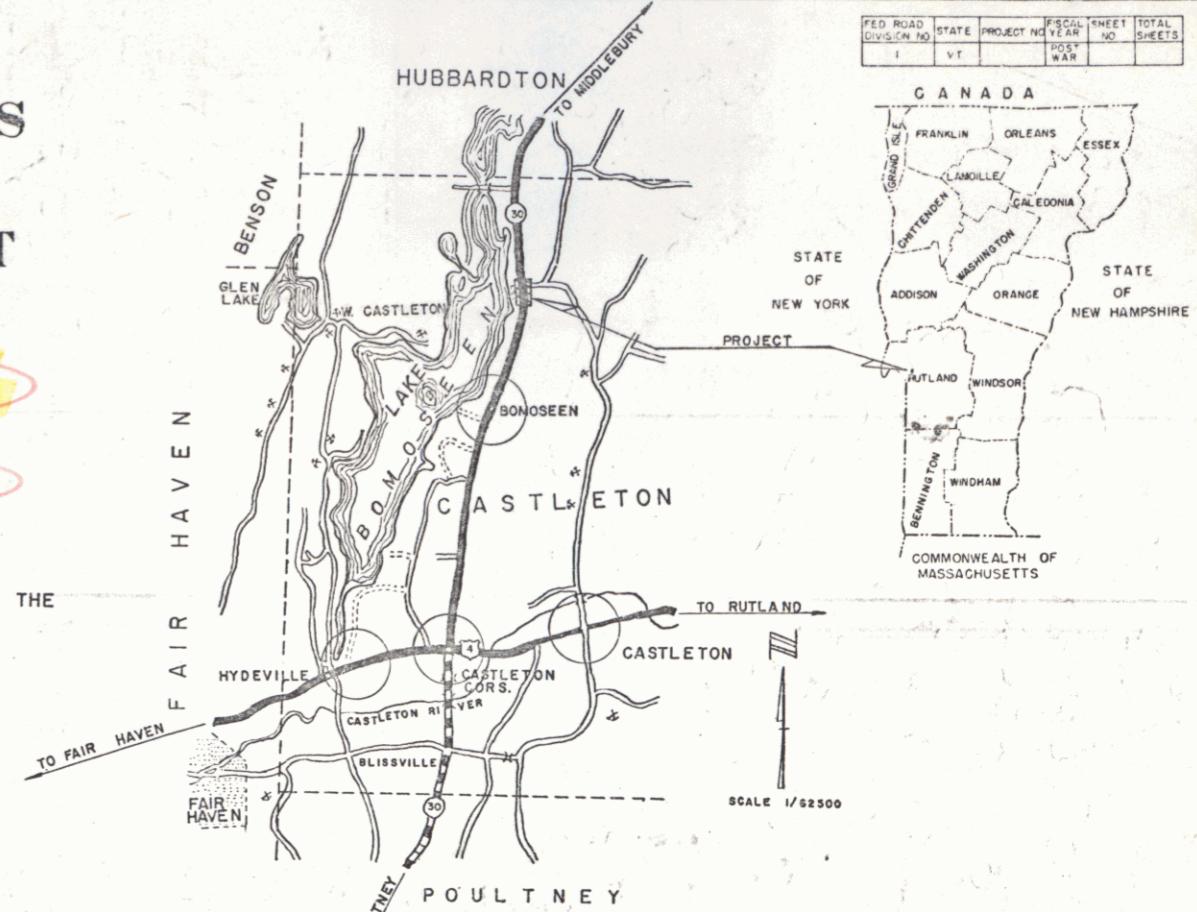
PROPOSED IMPROVEMENT

FEDERAL AID SECONDARY

TOWN OF CASTLETON
COUNTY OF RUTLAND
VERMONT ROUTE # 30
POULTNEY-MIDDLEBURY ROAD

BEGINNING AT A POINT APPROXIMATELY 3.5 MILES NORTHERLY OF THE
INTERSECTION OF VERMONT ROUTE # 30 AND U.S. ROUTE # 4
IN THE HAMLET OF CASTLETON CORNERS AND EXTENDING
NORTHERLY 0.227 MILES.

LENGTH OF PROJECT 1198.0' FEET = 0.227 MILES



ITEM	QUANTITY	UNIT	PRICE	TOTAL
1. Double tacked coat of bituminous material with pea stone and stone grits seal, prime coat of refined tar and double seal coat of cutback asphalt.	3195	S.Y.		
2. 3" Crushed gravel plant mixed.		S.Y.		
3. Cutback asphalt.		S.Y.		
4. Riprap.		S.Y.		
5. AccuMetal pipe.		LINEAL FEET		
6. Cable guard rail.		LINEAL FEET		
7. Wood guide posts.		PAIRS		

ITEM	QUANTITY	UNIT	PRICE	TOTAL
1. Gravel.		S.Y.		
2. Asphalt.		S.Y.		
3. Riprap.		S.Y.		
4. Pipe.		LINEAL FEET		
5. Guard rail.		LINEAL FEET		
6. Guide posts.		PAIRS		

ITEM	QUANTITY	UNIT	PRICE	TOTAL
1. Gravel.		S.Y.		
2. Asphalt.		S.Y.		
3. Riprap.		S.Y.		
4. Pipe.		LINEAL FEET		
5. Guard rail.		LINEAL FEET		
6. Guide posts.		PAIRS		

ITEM	QUANTITY	UNIT	PRICE	TOTAL
1. Gravel.		S.Y.		
2. Asphalt.		S.Y.		
3. Riprap.		S.Y.		
4. Pipe.		LINEAL FEET		
5. Guard rail.		LINEAL FEET		
6. Guide posts.		PAIRS		

ITEM	QUANTITY	UNIT	PRICE	TOTAL
1. Gravel.		S.Y.		
2. Asphalt.		S.Y.		
3. Riprap.		S.Y.		
4. Pipe.		LINEAL FEET		
5. Guard rail.		LINEAL FEET		
6. Guide posts.		PAIRS		

ITEM	QUANTITY	UNIT	PRICE	TOTAL
1. Gravel.		S.Y.		
2. Asphalt.		S.Y.		
3. Riprap.		S.Y.		
4. Pipe.		LINEAL FEET		
5. Guard rail.		LINEAL FEET		
6. Guide posts.		PAIRS		

ITEM	QUANTITY	UNIT	PRICE	TOTAL
1. Gravel.		S.Y.		
2. Asphalt.		S.Y.		
3. Riprap.		S.Y.		
4. Pipe.		LINEAL FEET		
5. Guard rail.		LINEAL FEET		
6. Guide posts.		PAIRS		

ITEM	QUANTITY	UNIT	PRICE	TOTAL
1. Gravel.		S.Y.		
2. Asphalt.		S.Y.		
3. Riprap.		S.Y.		
4. Pipe.		LINEAL FEET		
5. Guard rail.		LINEAL FEET		
6. Guide posts.		PAIRS		

THESE PLANS ARE SUBJECT TO SUCH REVISIONS AS MAY BE
REQUIRED BY THE BUREAU OF PUBLIC ROADS OR THE COMMISSIONER
OF HIGHWAYS.
CONSTRUCTION IS TO BE CARRIED ON IN ACCORDANCE WITH
THE PLANS AND THE STANDARD SPECIFICATIONS FOR HIGHWAY AND BRIDGE
CONSTRUCTION OF JANUARY 1956 SUBMITTED TO THE BUREAU OF
PUBLIC ROADS AS APPROVED JULY 5, 1956, INCLUDING ALL SUBSEQUENT
APPROVED REVISIONS AND SUCH REVISED SPECIFICATIONS AND SPECIAL
PROVISIONS AS ARE SUBMITTED WITH THE PLANS.

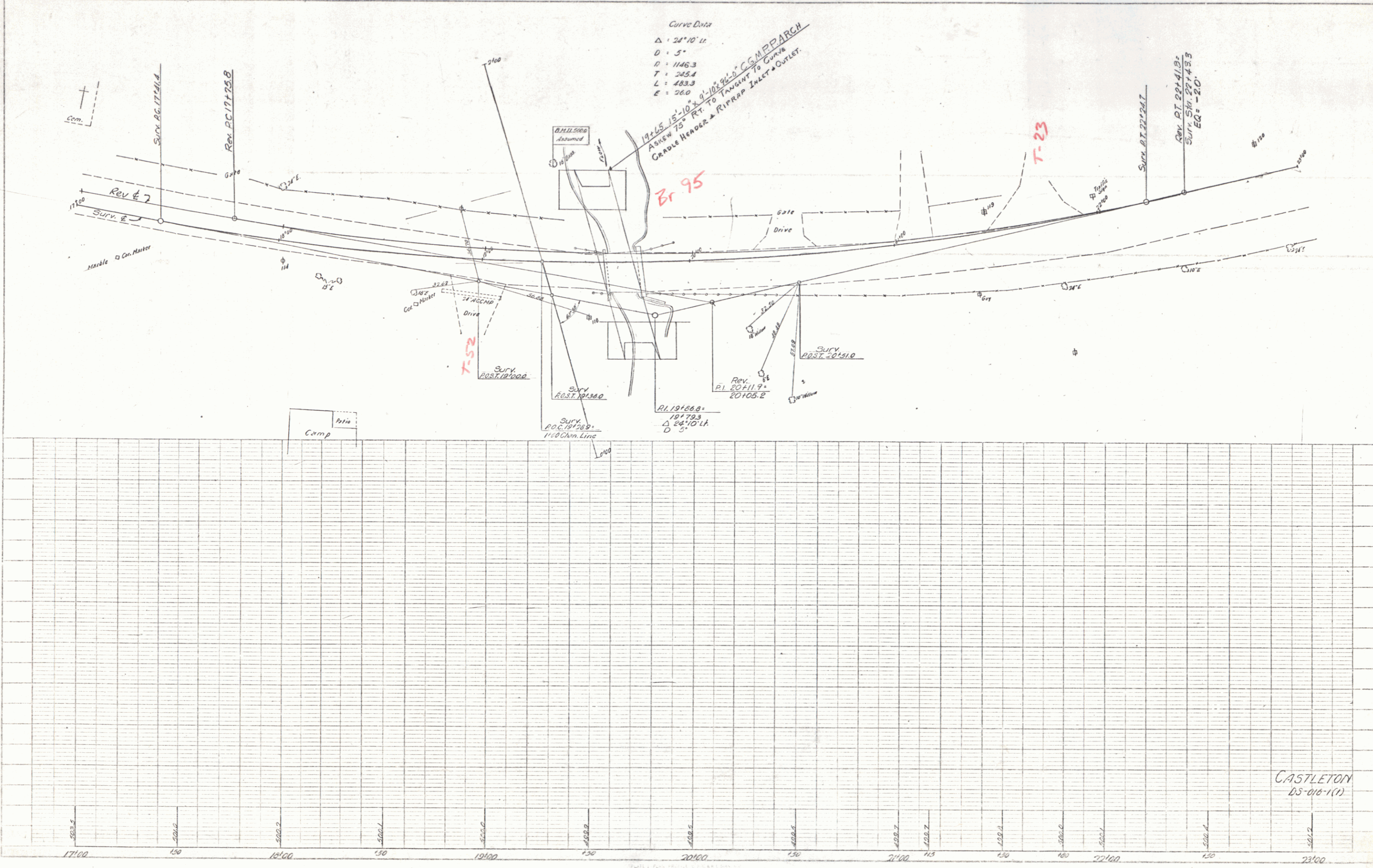
NOTE: ANY FURTHER INFORMATION CONCERNING
FINAL QUANTITIES, AMOUNTS OR OTHER DATA
RELATIVE TO THIS PROJECT MAY BE OBTAINED
EITHER THE FIELD BOOKS OR THE ESTIMATE
FILE.

APPROVED DATE 7/23/59	APPROVED DATE Aug 18, 1958	APPROVED DATE Aug 18, 1958	APPROVED DATE 7/23/58	APPROVED DATE Aug 18, 1958	APPROVED DATE Aug 18, 1958
--------------------------	-------------------------------	-------------------------------	--------------------------	-------------------------------	-------------------------------

DEPARTMENT OF COMMERCE BUREAU OF PUBLIC ROADS	
APPROVED	DATE
DISTRICT ENGINEER	
PROJECT DS-0161(1)	
SHEET 1 OF 20 SHEETS	

PLAN
 DATE: 6-28-78
 DRAWN BY: J.S.H.
 CHECKED BY: J.S.H.
 NO. OF SHEETS: 15
 SHEET NO.: 3

TITLE: DRAINAGE
 PROJECT: DS-016-1(1)
 DRAWN BY: J.S.H.
 CHECKED BY: J.S.H.
 NO. OF SHEETS: 15
 SHEET NO.: 3



Curve Data
 $\Delta = 24^\circ 10' 11''$
 $D = 5'$
 $R = 1146.3$
 $T = 245.4$
 $L = 483.3$
 $E = 26.0$

19+65 15' 10" 9'-10" 9'-0" COMPARCH
 ASKED 15' RT. TO TANGENT TO CURVE
 GRAPPLE HEADER & RIP-RAP INLET & OUTLET.

Br 95

T-23

T-52

CASTLETON
DS-016-1(1)

Sheet 15A

3