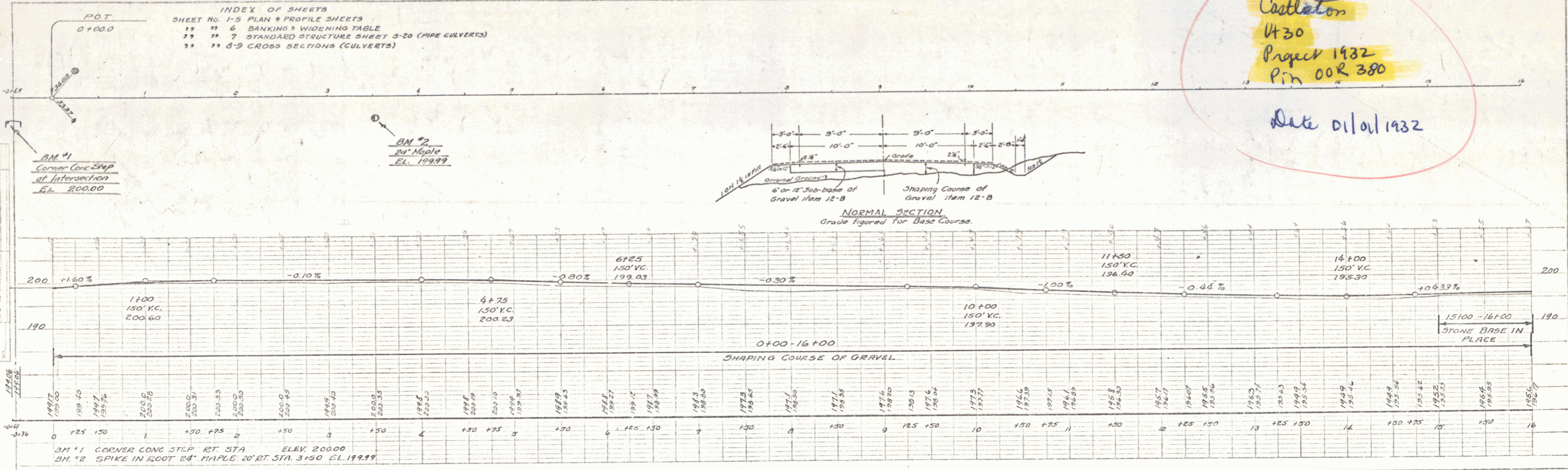


MP 1.53 - MP 5.32

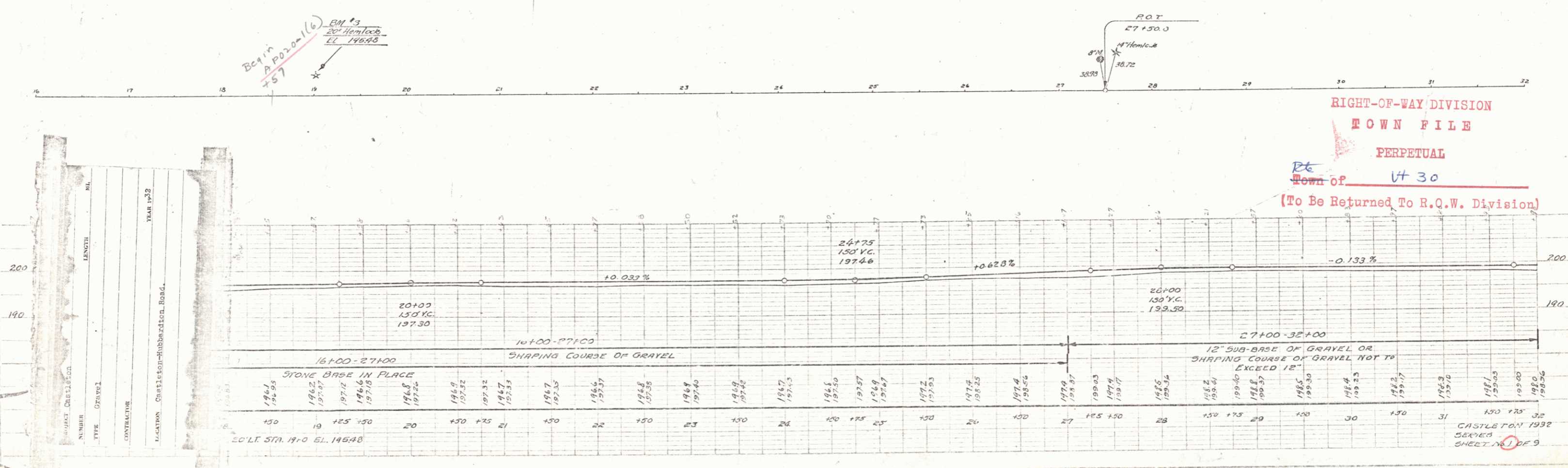
Castleton  
Ut 30  
Project 1932  
Pin 00R 380  
Date 01/01/1932

INDEX OF SHEETS  
SHEET No. 1-5 PLAN & PROFILE SHEETS  
" " 6 BANKING & WIDENING TABLE  
" " 7 STANDARD STRUCTURE SHEET 3-20 (PIPE CULVERTS)  
" " 8-9 CROSS SECTIONS (CULVERTS)

PLAN  
ELEVATED ROAD  
ADJUSTMENT SHEET  
NOTE: ROAD PART OF NEW CONSTRUCTION



PROFILE  
ELEVATED ROAD  
ADJUSTMENT SHEET  
NOTE: ROAD PART OF NEW CONSTRUCTION

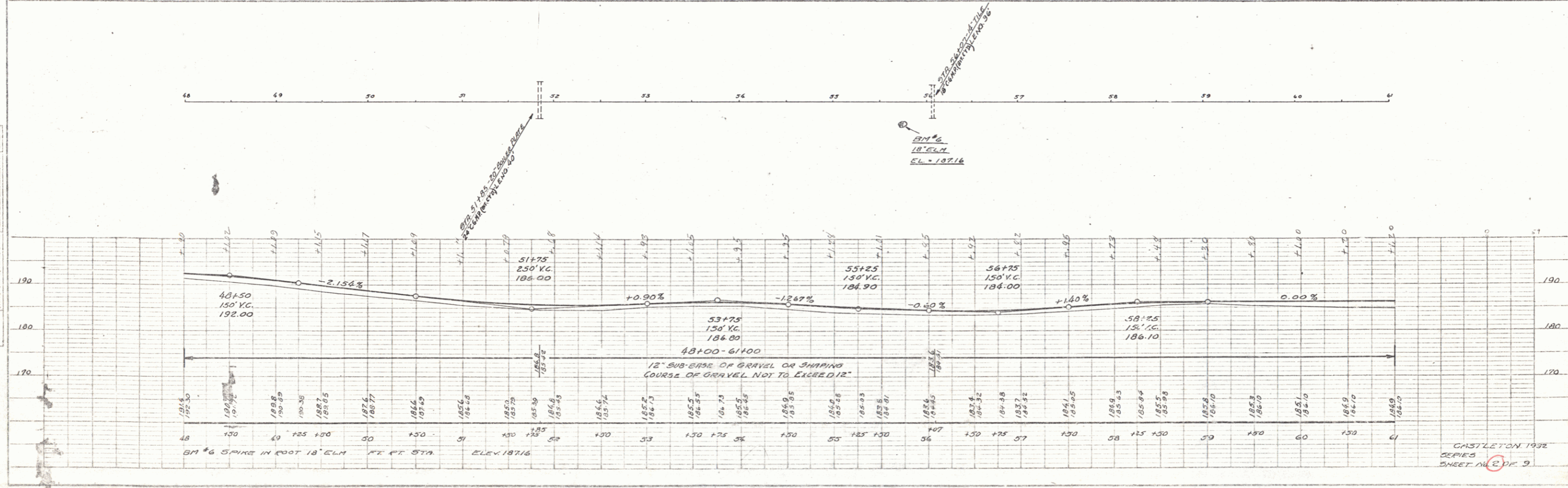
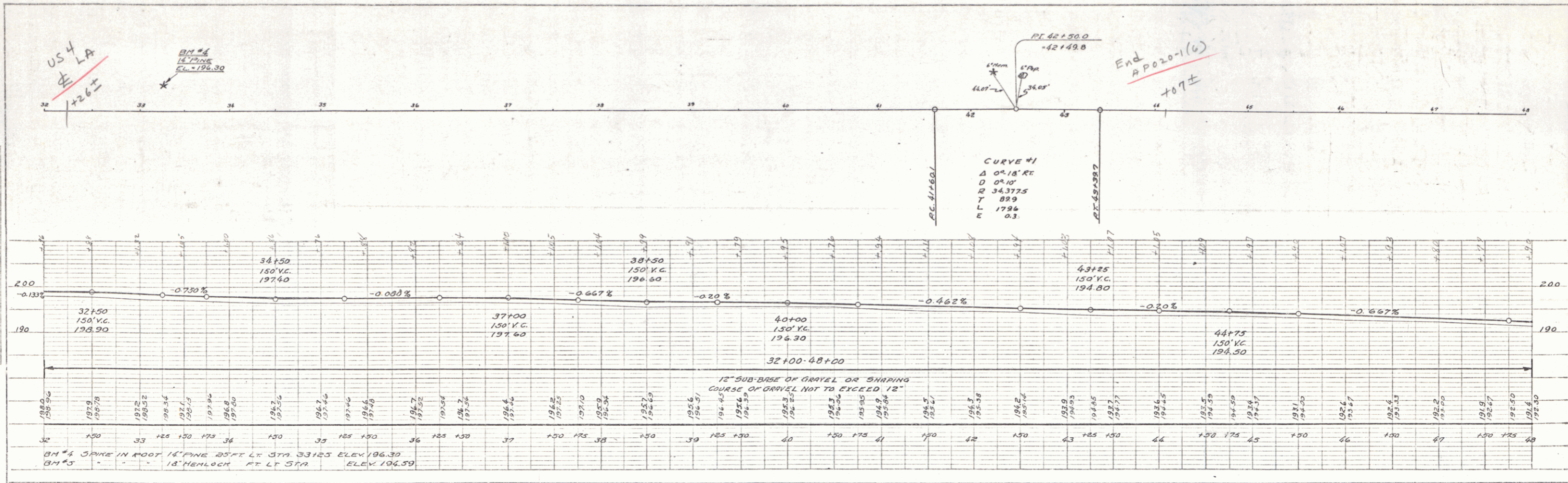


RIGHT-OF-WAY DIVISION  
TOWN FILE  
PERPETUAL  
Town of Ut 30  
(To Be Returned To R.Q.W. Division)

NO.	LENGTH	IN.
1		
2		
3		
4		
5		
6		
7		
8		
9		
10		
11		
12		
13		
14		
15		
16		
17		
18		
19		
20		
21		
22		
23		
24		
25		
26		
27		
28		
29		
30		
31		
32		

PLAN  
 SURVEYED BY: J. B. BOND  
 DRAWN BY: J. B. BOND  
 CHECKED BY: J. B. BOND  
 DATE: 1/25/50

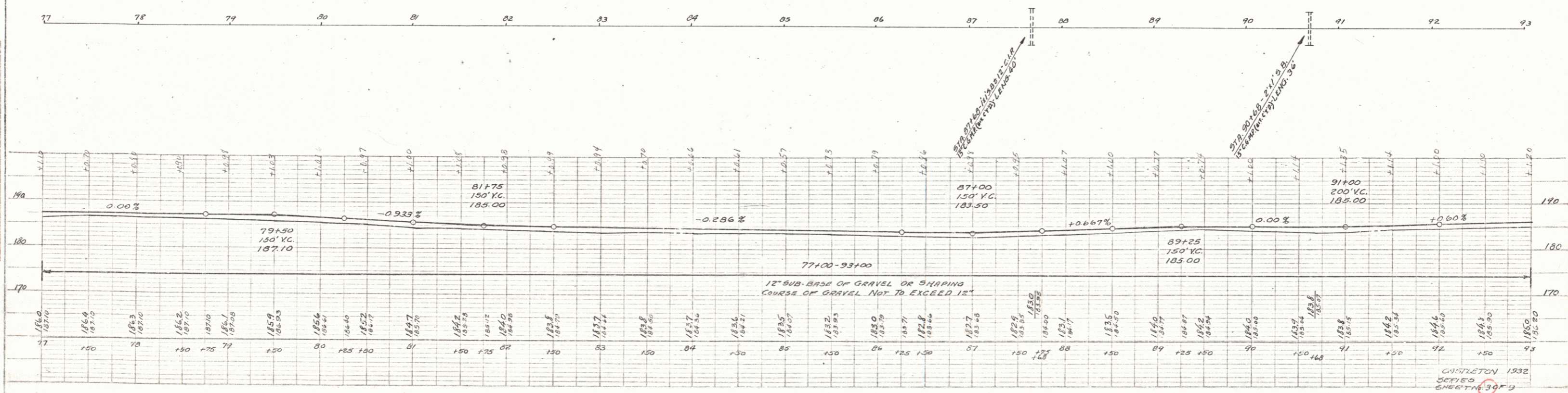
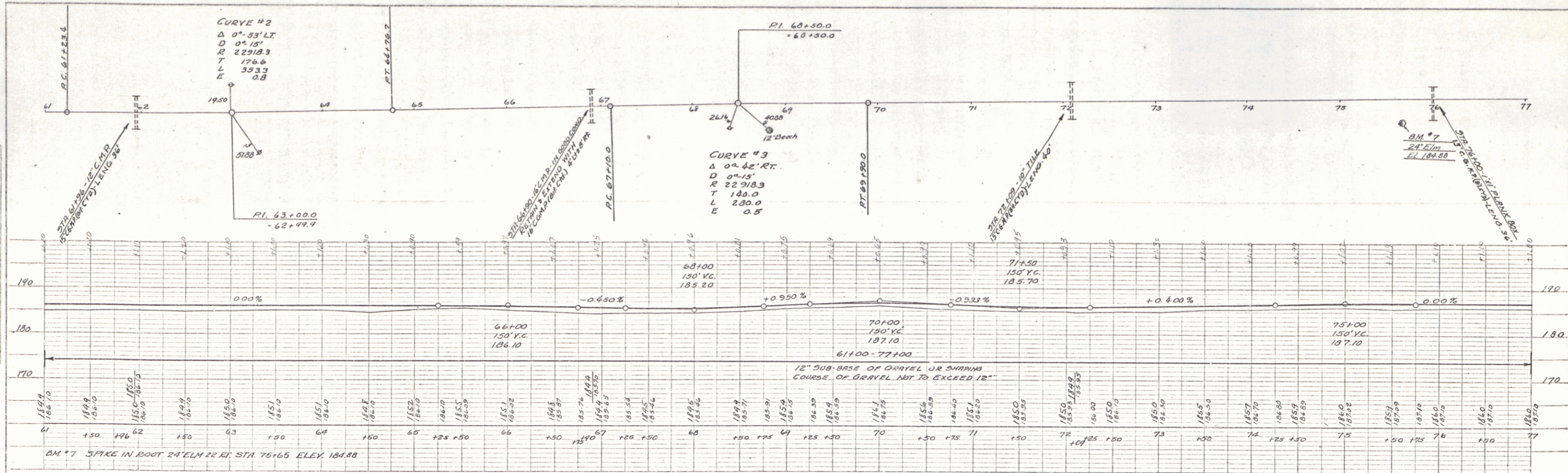
PROFILE  
 SURVEYED BY: J. B. BOND  
 DRAWN BY: J. B. BOND  
 CHECKED BY: J. B. BOND  
 DATE: 1/25/50



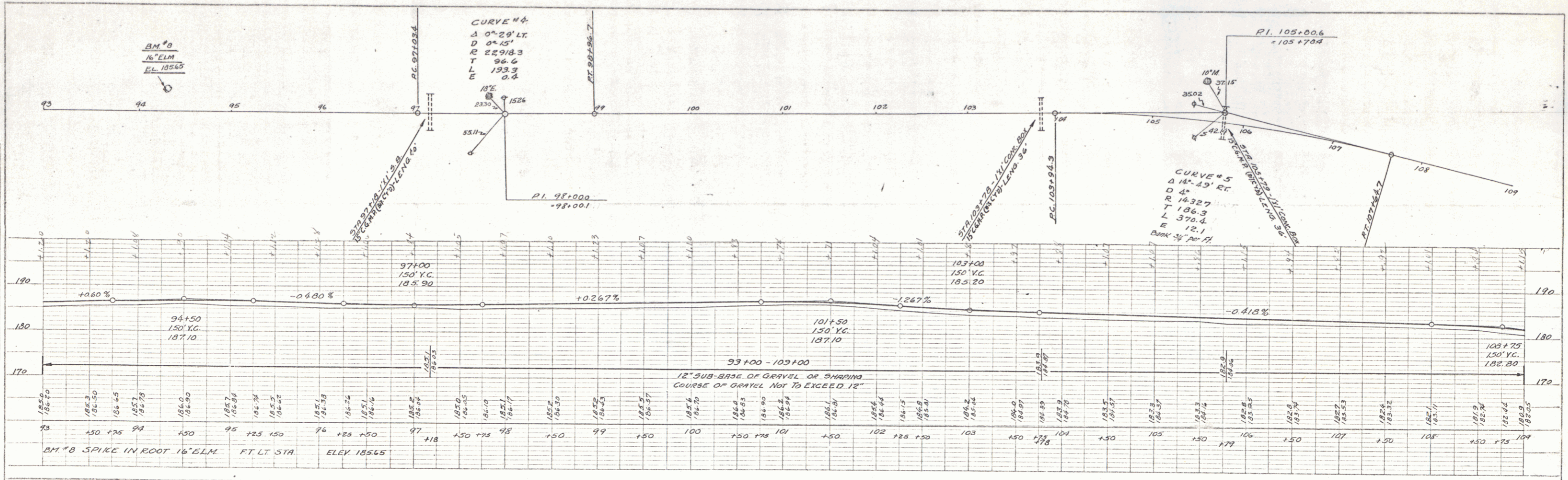
CASTLETON 1932  
 SERIES  
 SHEET NO. 2 OF 3

PLAN  
 DATE: 10/20/27  
 DRAWN BY: J. H. BENTLEY  
 CHECKED BY: J. H. BENTLEY  
 TITLE: PLAN AND PROFILE OF ROAD  
 NO. 10

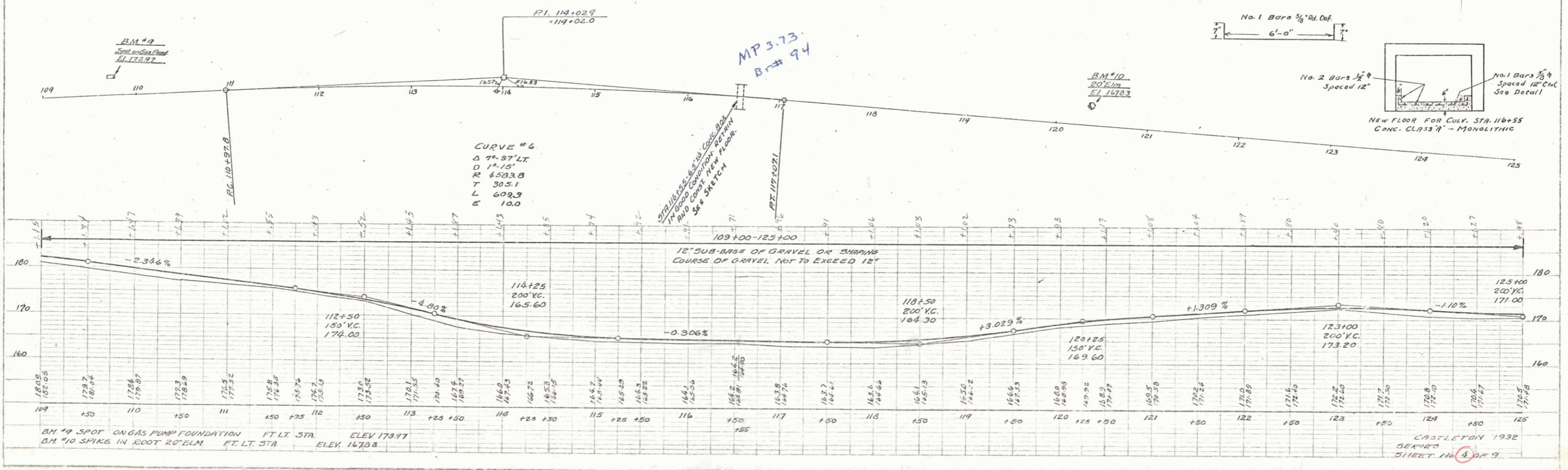
PROFILE  
 DATE: 10/20/27  
 DRAWN BY: J. H. BENTLEY  
 CHECKED BY: J. H. BENTLEY  
 TITLE: PLAN AND PROFILE OF ROAD  
 NO. 10



PLAN  
 ROUTE NO. 100  
 ROUTE MARK  
 1/2" = 100'

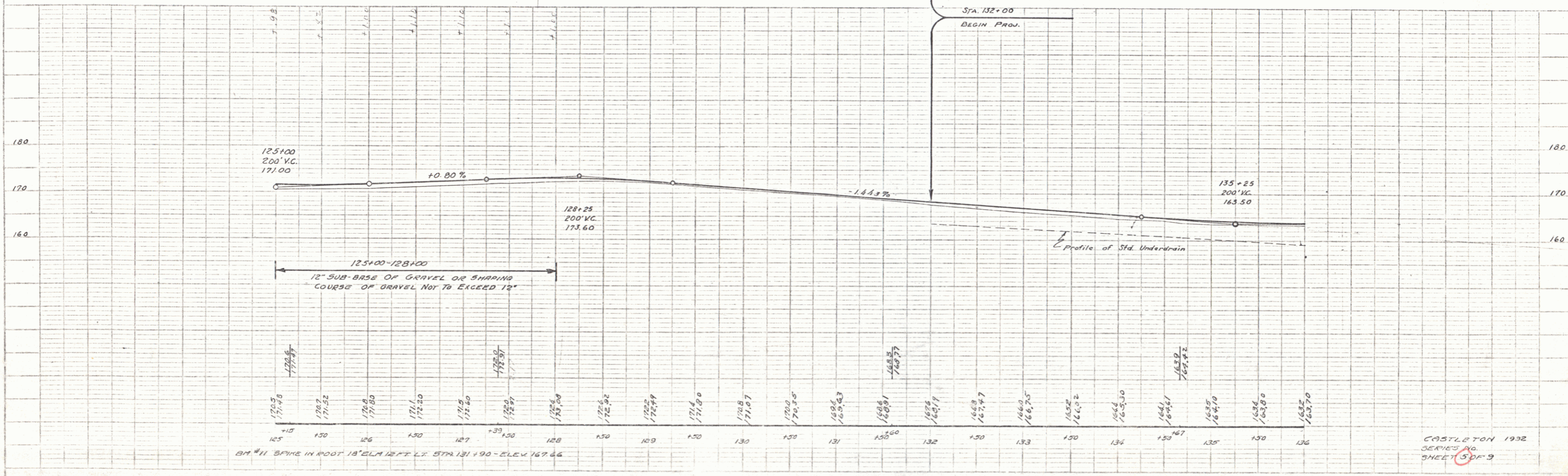
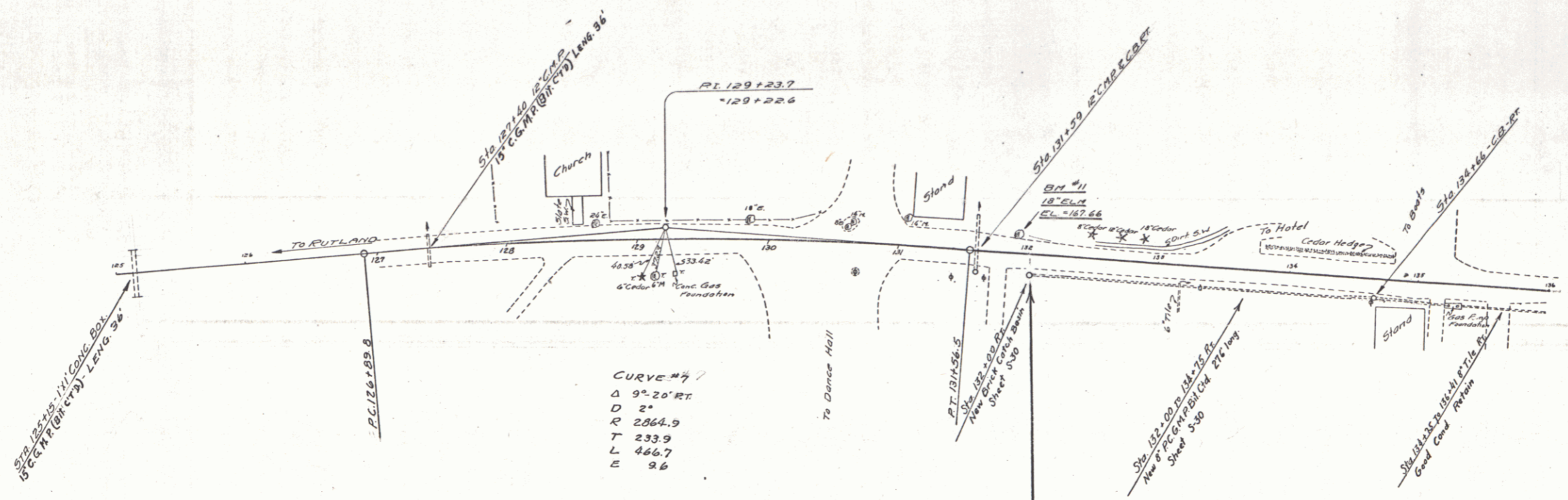


PROFILE  
 ROUTE NO. 100  
 ROUTE MARK  
 1/4" = 10'



PLAN  
 DATE: 10/1/32  
 DRAWN BY: A.D. WOOD  
 CHECKED BY: J. W. WOOD  
 TITLE: ROAD IMPROVEMENT  
 SHEET NO. 5 OF 9

PROFILE  
 DATE: 10/1/32  
 DRAWN BY: A.D. WOOD  
 CHECKED BY: J. W. WOOD  
 TITLE: ROAD IMPROVEMENT  
 SHEET NO. 5 OF 9



CASTLETON 1932  
 SERIES NO. 5  
 SHEET 5 OF 9



PLAN  
 A.D. WOOD  
 ENGINEER  
 100 S. 4TH ST. ST. LOUIS, MO.  
 1912

PROFILE  
 A.D. WOOD  
 ENGINEER  
 100 S. 4TH ST. ST. LOUIS, MO.  
 1912

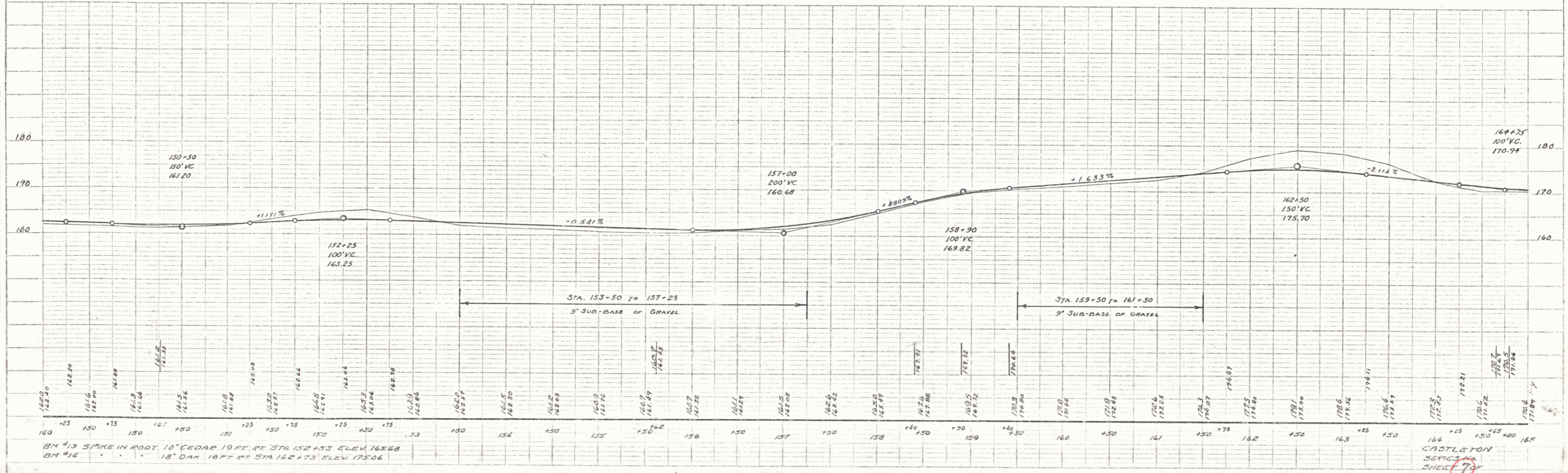
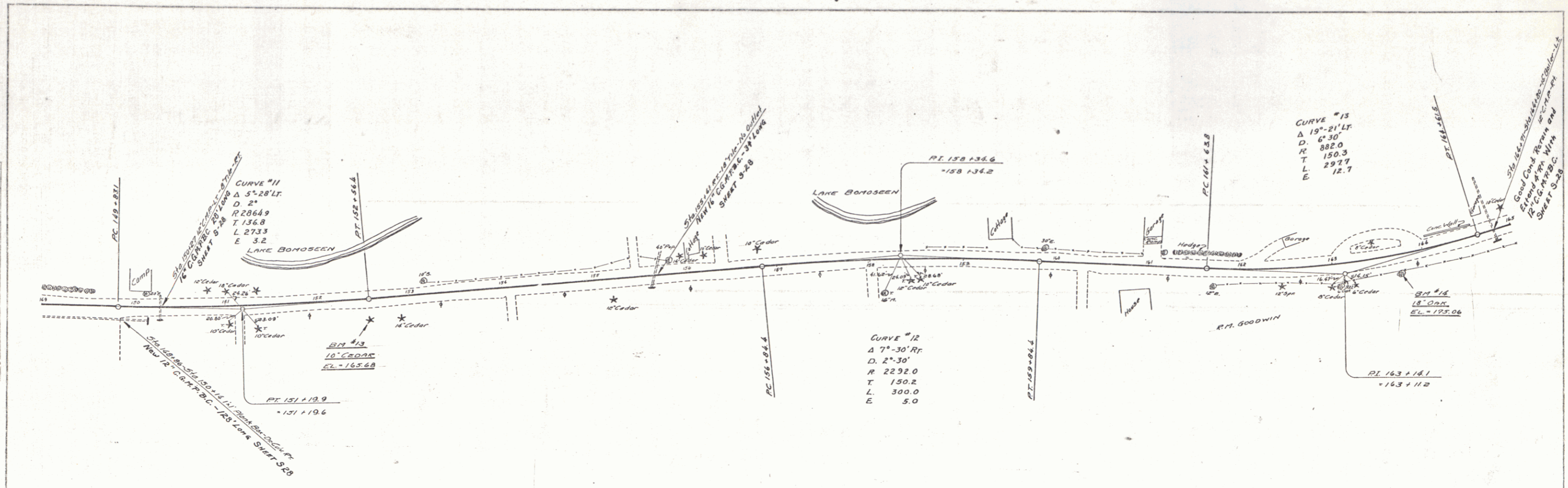
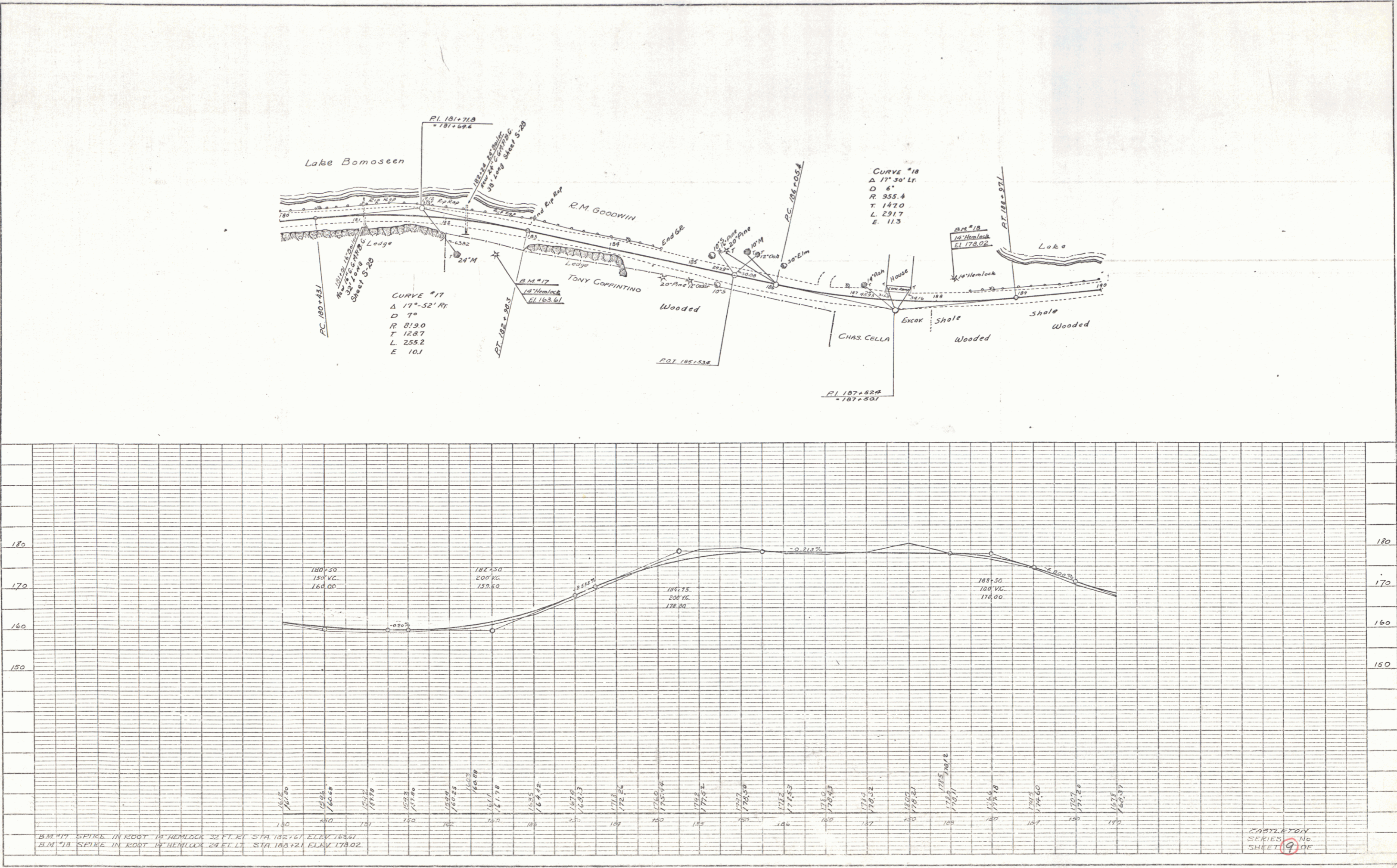


PLATE 1-PLAN-PROFILE OF P. A. R. S. ROAD  
 1912



PLAN  
 DRAWN BY: M. J. GARDNER  
 CHECKED BY: J. W. HARRIS  
 DATE: 10/15/24  
 SHEET NO. 9 OF 9

PROFILE  
 DRAWN BY: M. J. GARDNER  
 CHECKED BY: J. W. HARRIS  
 DATE: 10/15/24  
 SHEET NO. 9 OF 9



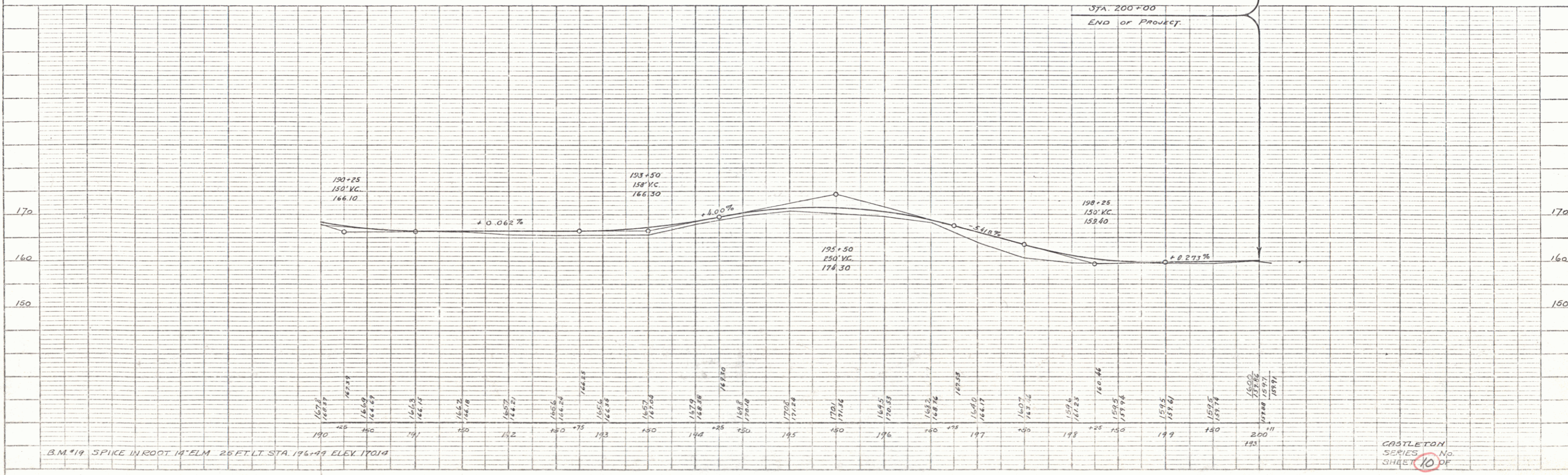
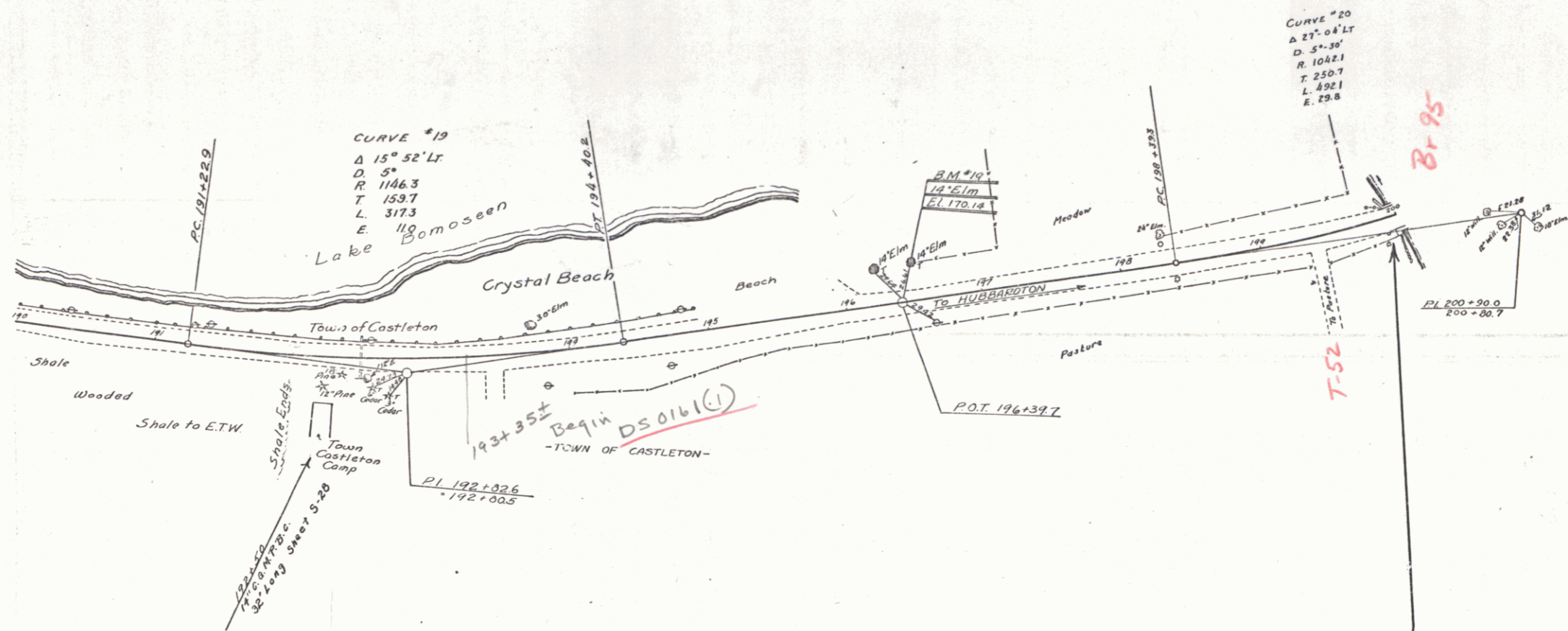
B.M. #17 SPIKE IN ROOT OF HEMLOCK 32 FT. RT. STA. 182+61 ELEV. 162.51  
 B.M. #18 SPIKE IN ROOT OF HEMLOCK 24 FT. LT. STA. 185+21 ELEV. 178.02

PLATE 1 - PLAN - PROFILE C. & D. E. STADION  
 STROBEL & ESSER CO., NEW YORK

CASLEYTON  
 SERIES No. 9  
 SHEET 9 OF 9

PLAN  
 DRAWN BY: WOOD  
 CHECKED BY: WOOD  
 DATE: 10/1/1919  
 PROJECT: CASTLETON  
 SHEET NO. 10 OF 10

PROFILE  
 DRAWN BY: WOOD  
 CHECKED BY: WOOD  
 DATE: 10/1/1919  
 PROJECT: CASTLETON  
 SHEET NO. 10 OF 10



B.M. #19 SPIKE IN ROOT 14' ELM 25 FT. LT. STA. 196+49 ELEV. 170.19

CASTLETON SERIES No. 10 SHEET 10 OF 10