

PLAN  
 A.D. WOOD  
 ENGINEER  
 100 S. 4TH ST. ST. LOUIS, MO.  
 1912

PROFILE  
 A.D. WOOD  
 ENGINEER  
 100 S. 4TH ST. ST. LOUIS, MO.  
 1912

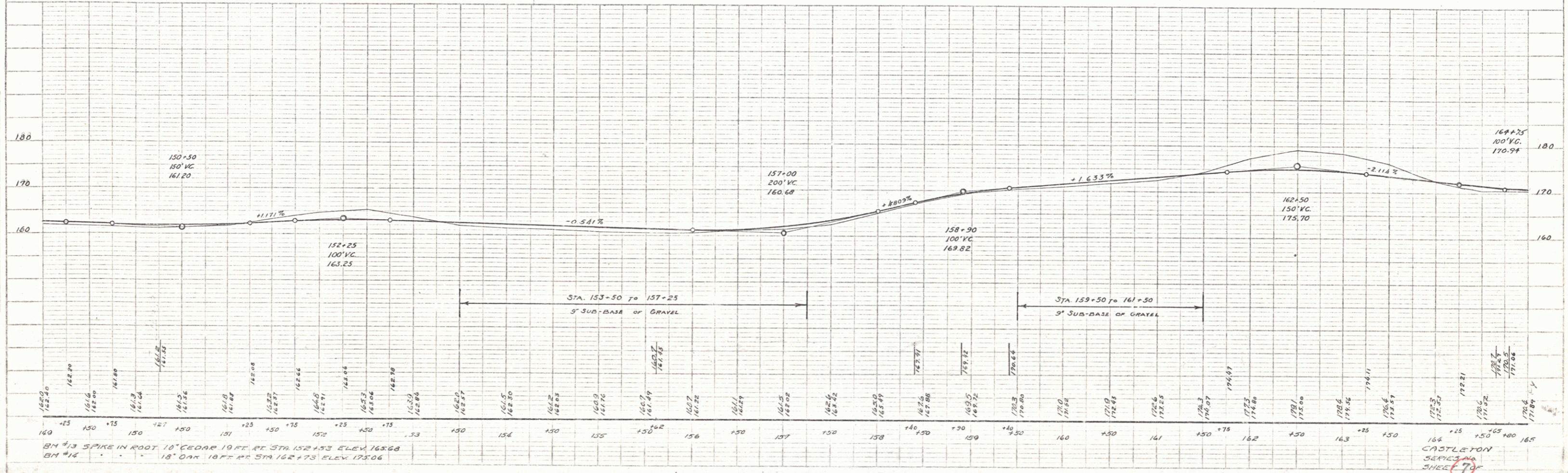
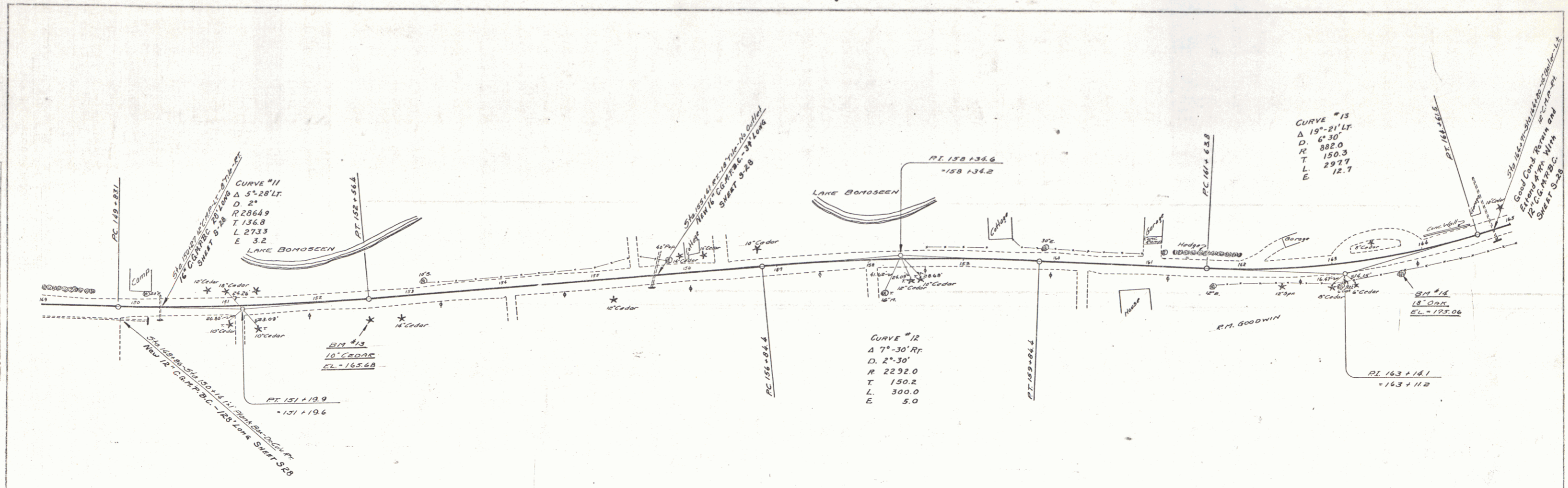


PLATE 1-PLAN-PROFILE OF P. A. R. S. ROAD  
 1912