

INDEX OF SHEETS

SHEET NO. 1	TITLE PAGE
2	TYPICAL CROSS-SECTION OF IMPROVEMENT (GRADING, DRAINAGE, BASE WITH GUARD RAIL AND DOUBLE TACK COAT OF REFINED TAR - ITEM 29)
3	BANKING AND WIDENING TABLES
4	PLAN AND PROFILE STA.
5	5/8" PLAN AND PROFILE
7	SUPERSTRUCTURE OF BRIDGE - S.I.B.-22-56
8	DETAILS OF ABUTS 1&2
9	S.I.B.-22-15 SM (MODIFY FOR 14'-5.5" SK)
10	DETAILS OF ABUTS 1&2
11	DETAILS OF PIERS 1&2
12	DETAILS OF BLAST PLATES
13	SB-20 DETAILS C.T., J., L.E., K., D GENERAL NOTES
14	SB-11 BARRIERS, SIGNS & LIGHTS
15	SB-32 CABLE GUARD RAIL
15A	3-30 CABLE GUARD RAIL
16-20	CROSS SECTIONS

FED. ROAD DIST. NO.	STATE	FISCAL YEAR	SHEET NO.	TOTAL SHEETS
9	Vt.	1938	1	20

STATE OF VERMONT
STATE HIGHWAY DEPARTMENT

PLAN AND PROFILE OF PROPOSED
STATE HIGHWAY

FEDERAL AID GRADE CROSSING
SECONDARY PROJECT

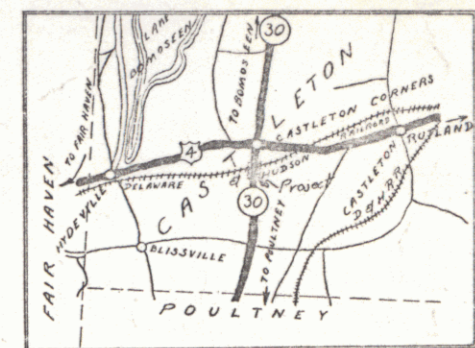
TOWN OF CASTLETON

POULTNEY CASTLETON ROAD

BEGINNING AT A POINT ON ROUTE 30, 1.32 MILES NORTHERLY OF THE POULTNEY-CASTLETON TOWN LINE AND EXTENDING NORTHERLY TO A POINT 1081 FT. SOUTHERLY OF THE INTERSECTION WITH ROUTE U.S.4

LENGTH OF PROJECT 800 FT. = 0.151 MILES

Project: FAGS9
Route Vt30
Pin 00R378
Date 03/04/1938



SCALE 1" = 1 MI

RIGHT-OF-WAY DIVISION
TOWN FILE

PERPETUAL

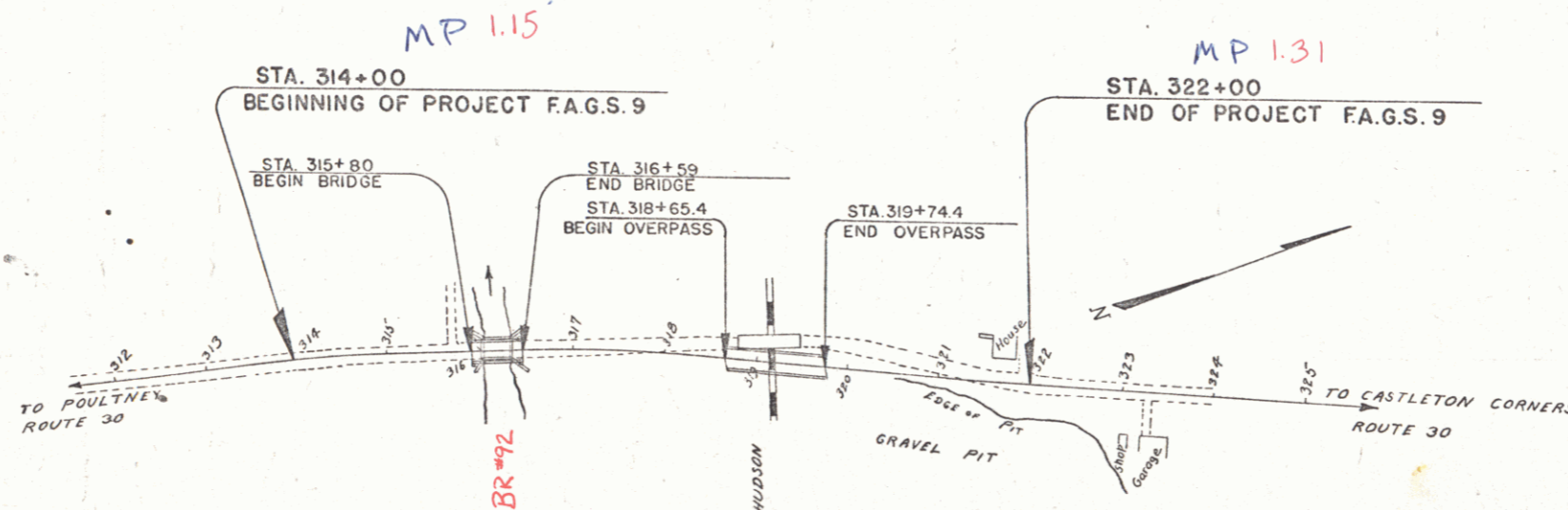
Route of Vt 30

(To Be Returned To R.O.W. Division)

APPROVED: MARCH 4, 1938
CHIEF ENGINEER
DELAWARE & HUDSON RAILROAD CORPORATION

APPROVED: MARCH 7, 1938
COMMISSIONER OF HIGHWAYS

SUBMITTED BY ORDER OF THE STATE HIGHWAY BOARD



CONVENTIONAL SIGNS

COUNTY LINE	-----
TOWN LINE	-----
FENCE LINE	-----
STONE WALL	-----
UNFENCED PROPERTY	-----
GUARD RAIL	-----
TRAVELED WAY	-----
RAILROAD	-----
RETAINING WALL	-----
CENTER LINE	-----
SURVEY LINE	-----
CULVERT	-----
DROP INLET	-----
TROLLEY POLE	-----
POWER POLE	-----
TELEPHONE POLE	-----
TREE	-----
HEDGE	-----

GROUND ELEVATION	DATUM	LINE
GRADE ELEVATION	BATH	LINE

CURVE DATA

DEFLECTION ANGLE	Δ
DEGREE OF CURVE	D
RADIUS OF CURVE	R
TANGENT DISTANCE	T
LENGTH OF CURVE	L
EXTERNAL DISTANCE	E
POINT OF INTERSECTION	P. I.
POINT OF CURVE	P. C.
POINT OF TANGENT	P. T.
POINT ON TANGENT	P. O. T.

SCALES

TITLE	1" = 100'
TYPICAL	1" = 2'
PLAN	1" = 20'
PROFILE	HOR. 1" = 20'
CROSS SECTIONS	1" = 5'

These plans are subject to such revisions as may be required by the Bureau of Public Roads to the Commissioner of Highways. Construction is to be carried on in accordance with the plans and Standard Road and Bridge Specifications of 1936 as approved December 29, 1936 by the Bureau of Public Roads including all subsequent approved revisions and such revised specifications and special provisions as are submitted with the plans.

APPROVED Feb. 3, 1938
E. M. F. [Signature]
DISTRICT HIGHWAY COMMISSIONER

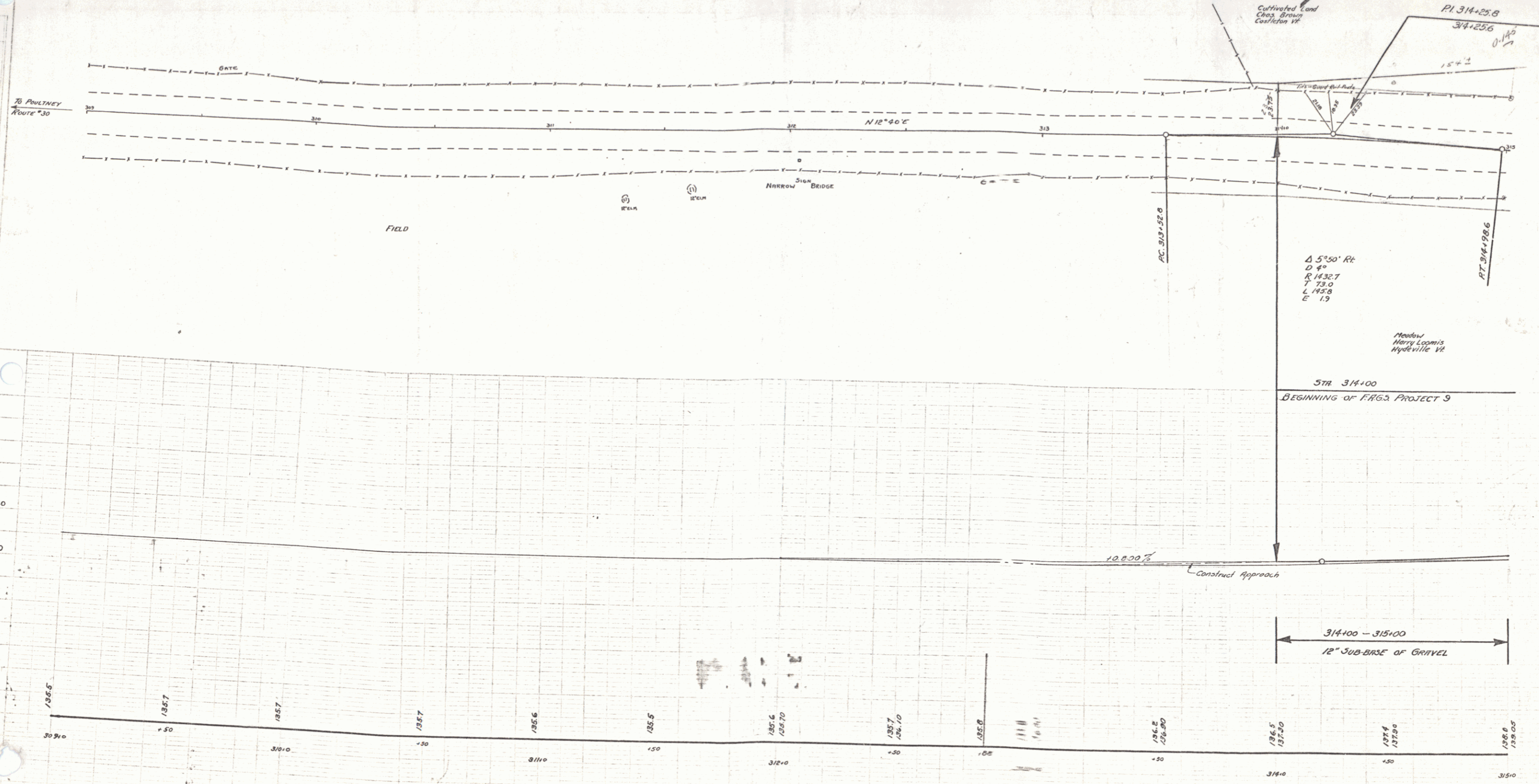
CORRECTED
A. B. [Signature]
BRIDGE ENGINEER

SERIES FAGS NO. 9 FILED
SHEET 1 OF 20

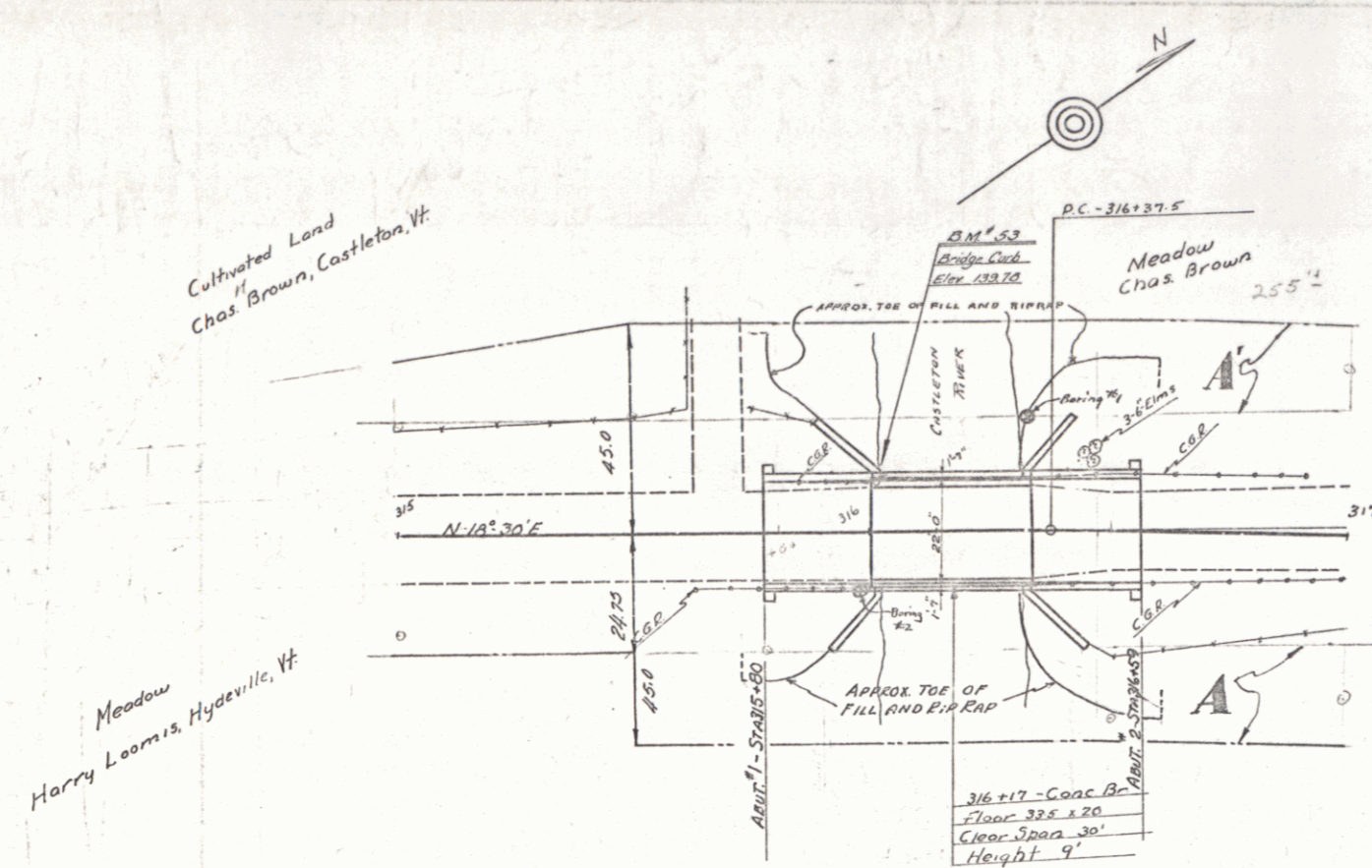
00 M. Castleton 38
 Keep !!

SHEED BARN

FIG. 3, 1938 1 20



CASTLETON FIG. 3, '38
SHEET 6 OF 20



PARCEL	INSTRUMENT	DATE	GRANTOR	GRANTEE	RECORDED	REMARKS
A	Q.C.D.	6-11-38	HARRY R. LOOMIS	ST. OF VT.	BOOK PAGE DATE	
A'	Q.C.D.	4-19-38	CHARLES H. BROWN	"	41 255 6-11-38	
					41 232 4-22-38	

"NOTE"
 THE CONTRACTOR WILL BE REQUIRED TO REMOVE THE PRESENT CONCRETE SUPERSTRUCTURE. THIS WORK SHALL BE PAID FOR AT THE UNIT PRICE BID FOR ROCK EXCAVATION. THE OLD SUPERSTRUCTURE MAY BE USED AS RIP RAP, IF OF SATISFACTORY SIZE WITH THE APPROVAL OF THE ENGINEER.
 PRESENT ABUTMENTS SHALL BE BUILT UP WITH CLASS C CONCRETE, FLUSH WITH THE TOP OF THE HAUNCHES, FULL WIDTH OF THE BRIDGE SEATS AND WELL DOWELED TO THE ABUTMENTS. DOWELS SHALL BE AT LEAST 3/4" 3'-0" LONG AND DOWELED INTO PRESENT ABUTMENTS 1'-0". AT LEAST TEN DOWELS FOR EACH ABUTMENT. COST OF DRILLING FOR AND SETTING DOWELS TO BE INCLUDED IN UNIT PRICE BID FOR REINFORCING STEEL.
 THE FOLLOWING QUANTITIES ARE ALLOWED IN THE ESTIMATE FOR THIS WORK:
 SOLID ROCK EACH - 38 CU YDS.
 CONCRETE CLASS C - 7 CU YDS.
 REINFORCING STEEL - 200 LBS.

BRIDGE DATA

TYPE	PRESENT	PROPOSED
CONCRETE T. BRIDGE	CONCRETE T. BRIDGE	CONCRETE T. BRIDGE
CLEAR SPAN	30'-0"	75'-0"
OVERALL SPAN	33'-0"	79'-0"
LEAD HEIGHT	9'-0"	10'-0"
ROADWAY WIDTH	22'-0"	22'-0"

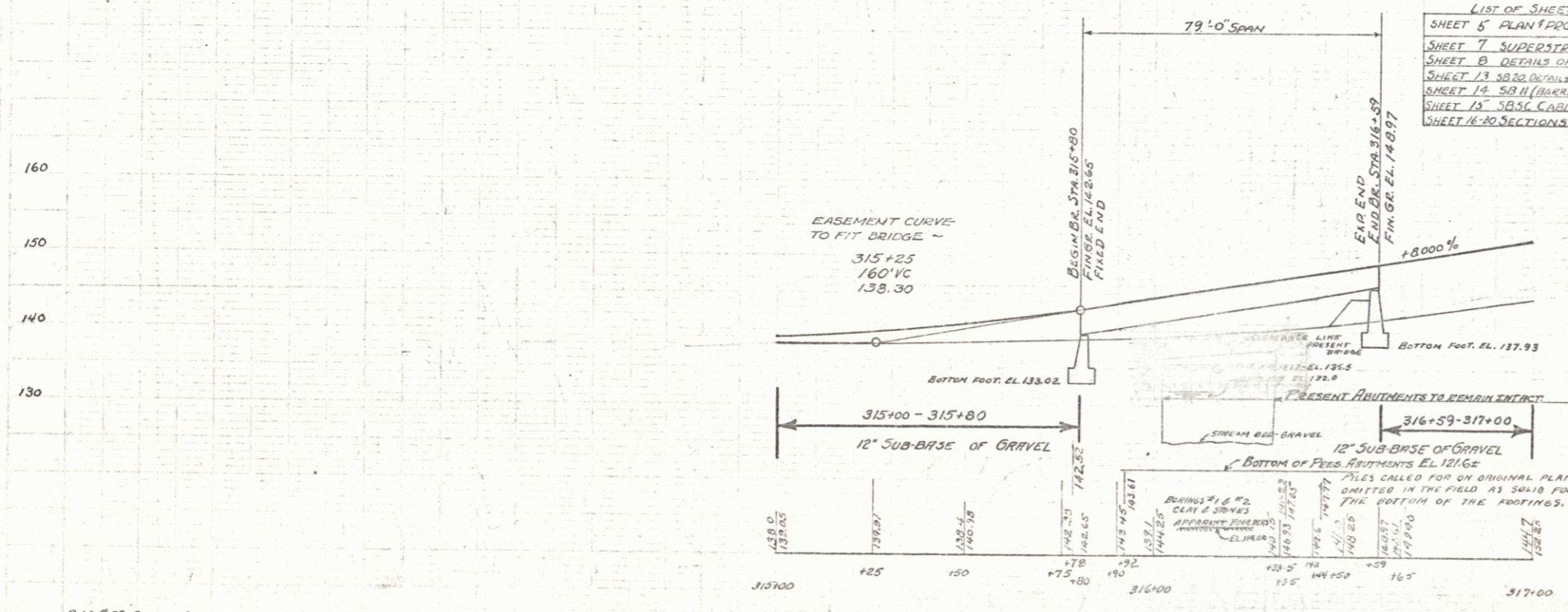
QUANTITIES FOR BRIDGE ONLY

ITEM 10 SOLID ROCK EXCAV.	38 CY (SEE NOTE)
ITEM 16 STRUCTURE EXCAV.	82 CY
ITEM 18 MAINTENANCE OF TRAFFIC	1 L.S.
ITEM 41A CONCRETE CLASS A	57 CY
ITEM 41C CONCRETE CLASS C	64 CY
ITEM 44 REINFORCING STEEL	13263 LBS.
ITEM 56 TEMPORARY BRIDGE	1 L.S.

LIST OF SHEETS FOR BRIDGE ONLY

SHEET 5 PLAN & PROFILE
SHEET 7 SUPERSTRUCTURE - S.D. 22 SQ.
SHEET 8 DETAILS OF ABUTS "9" 2
SHEET 13 30 20 DOWELS, P.L. & GENERAL NOTES
SHEET 14 50 11 UNDERCABLES, 3-000 LIGHTS, ETC.
SHEET 15 50 50 CABLE GUARD RAIL
SHEET 16 30 SECTIONS

ITEM 80A CABLE GUARD RAIL 158 L.F.
 " 42 B STEEL SUPERSTRUCTURE (94,400") 1 L.S.
 " 60 RIP RAP (HEAVY TYPE) 100 CY

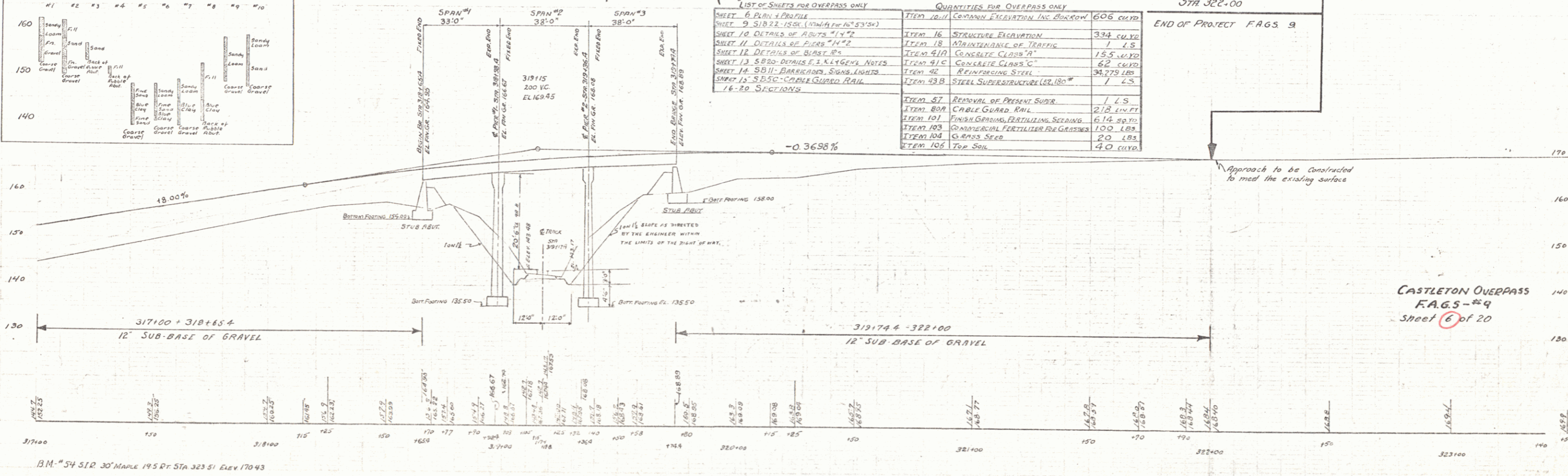
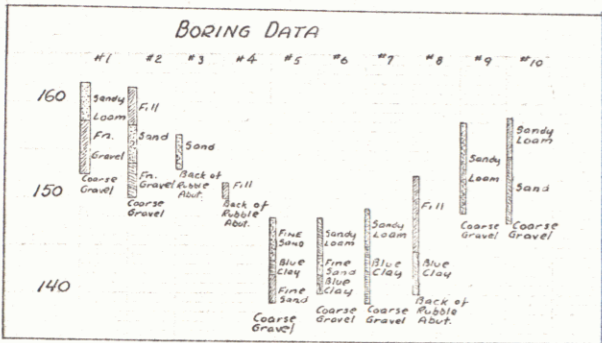


NOTE:-
 ENDS OF WF EARMS TO BE BEVEL CUT.
 FILL IN FRONT OF ABUT. #2 TO BE ON A SLOPE OF 10% FROM HAUNCH ELEVATION AND RISE TO BE CARRIED UP TO ELEV. 135.00
 FILL IN FRONT OF ABUT. #1 ON NORMAL SLOPE OF 10% AND RIP RAP CARRIED UP TO ELEV. 138.00
 RIP RAP TO BE R.I.P. RAP FOR BANK PROTECTION (HEAVY TYPE) TO BE 2'-0" INTO STREAM BED OR BANK.

CASTLETON
 PAGES #9
 Sheet 5 of 20

REVISED APR. 1938. SPAN LENGTHENED TO 79'
 RIP RAP ADDED.
 REVISED APR. 16, 1938. REMOVAL OF PRESENT SUPERSTRUCTURE.

OVERPASS DATA		
TYPE	SPAN	APPROX
TYPE	NO. SPAN	APPROX
SPAN	3	33-38.38
CLEARANCE VERTICAL	20'	20'
CLEARANCE LENGTH	65'	109'
ROADWAY	15'	22'
SIDE CLEARANCE	8.5'	175' FROM CENTER



LIST OF SHEETS FOR OVERPASS ONLY		QUANTITIES FOR OVERPASS ONLY	
SHEET 6	PLAN & PROFILE	ITEM 10/11	CONCRETE EXCAVATION INC. BACKFILL
SHEET 7	SUB-BASE (12" SUB-BASE)	ITEM 16	STRUCTURE EXCAVATION
SHEET 8	DETAILS OF ABUT. #1 & #2	ITEM 18	MATERIALS OF TRAFFIC
SHEET 9	DETAILS OF ABUT. #3	ITEM 41/1	CONCRETE CLASS "A"
SHEET 10	DETAILS OF ABUT. #4	ITEM 41/2	CONCRETE CLASS "B"
SHEET 11	DETAILS OF ABUT. #5	ITEM 41/3	CONCRETE CLASS "C"
SHEET 12	DETAILS OF ABUT. #6	ITEM 42	REINFORCING STEEL
SHEET 13	DETAILS OF ABUT. #7	ITEM 43/1	STEEL SUPERSTRUCTURE (20' x 18")
SHEET 14	DETAILS OF ABUT. #8	ITEM 57	REMOVAL OF PRESENT SURF.
SHEET 15	DETAILS OF ABUT. #9	ITEM 80/1	CABLE GUARD RAIL
SHEET 16	DETAILS OF ABUT. #10	ITEM 101	FINISH GRADING, FERTILIZING, SEEDING
SHEET 17	DETAILS OF ABUT. #11	ITEM 103	COMMERCIAL FERTILIZER FOR GRASS
SHEET 18	DETAILS OF ABUT. #12	ITEM 104	GRASS SEED
SHEET 19	DETAILS OF ABUT. #13	ITEM 106	TOP SOIL

STATE	PROJECT	SHEET NO.	TOTAL SHEETS
VT	FASS-9 1938	8	20

B.M. #54 S.I.R. 30' MARK 195 FT. STA 323.51 ELEV 170.93

CASTLETON OVERPASS
F.A.G.S. #9
Sheet 8 of 20