

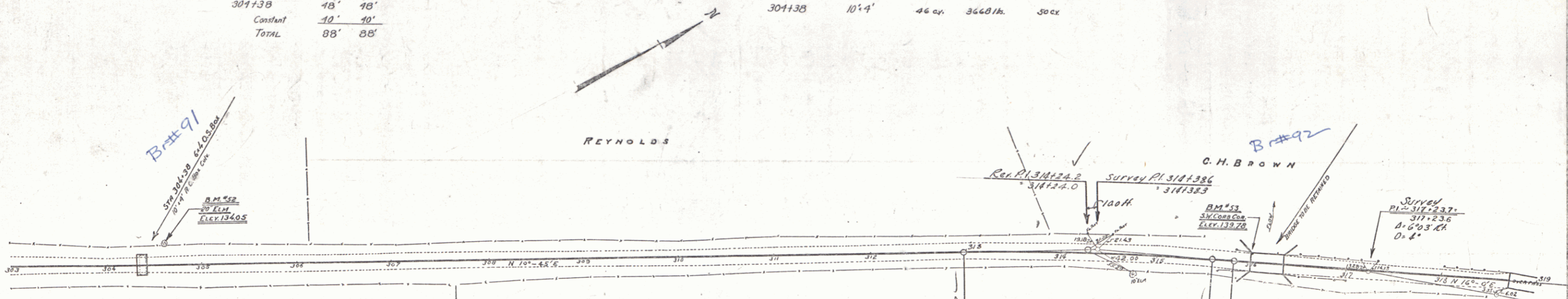
CABLE GUARD RAIL REQUIRED

Cully Sta.	Left	Right
301+38	48'	48'
Constant	10'	10'
TOTAL	88'	88'

NEW REIN. CONC. BOX CULV. REQUIRED

Sta.	Size	Conc. A	Steel	Strud Excav
301+38	10'4"	46 cu.	3660 lb.	50 cc.

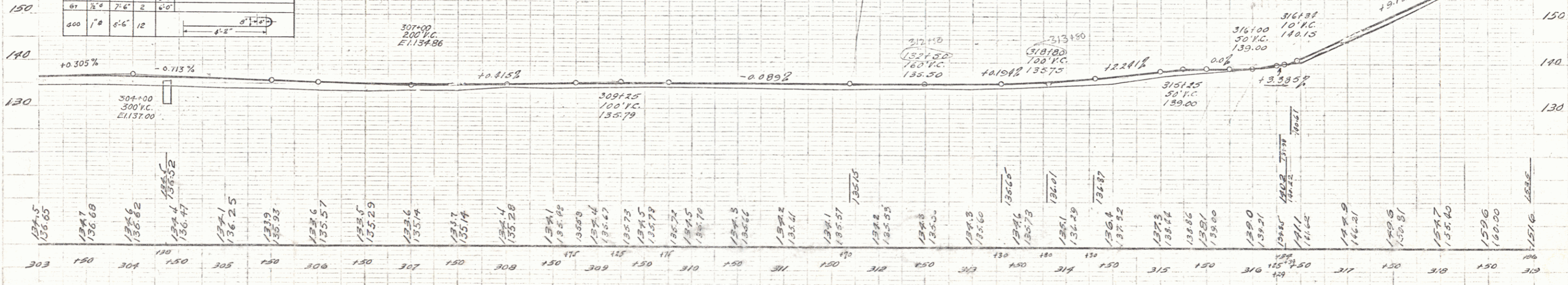
FED. ROAD DIST. NO.	STATE	F.L.O. AID PROJ. NO.	LOCAL YEAR	SHEET NO.	TOTAL SHEETS
9	VT.			23	24



REINFORCING STEEL SCHEDULE - 10'4" CULV AT STA 301+38

Bar	Size	Qty	Length
A	3/8"	2	13'-0"
B	1/2"	4	5'-6"
C	1/2"	4	15'-8"
D	1/2"	4	4'-4"
D1	1/2"	4	3'-0"
D2	1/2"	4	6'-4"
D3	1/2"	4	6'-4"
D4	1/2"	4	22'-6"
E1	1/2"	2	12'-0"
E2	1/2"	2	10'-0"
E3	1/2"	2	16'-0"
E4	1/2"	2	20'-0"
E5	1/2"	2	20'-0"
F1	1/2"	4	4'-0"
F2	1/2"	4	7'-3"
F3	1/2"	4	9'-3"
G	1/2"	4	5'-0"
G1	1/2"	4	3'-0"
G2	1/2"	4	6'-0"
G3	1/2"	4	6'-0"
G4	1/2"	4	5'-0"
G5	1/2"	4	5'-6"
G6	1/2"	4	6'-0"
H	1"	12	4'-2"

CORRECT
C. D. Siskopf
BRIDGE ENGINEER



B.M. No. 52 spike in 20' elm 19' left sta 304+61 Elev 134.05
B.M. No. 53 S.W. end bridge curb 10' left Sta 318+00 Elev 139.78

FOULTNEY-CASTLETON
SHEET 23 OF 24