

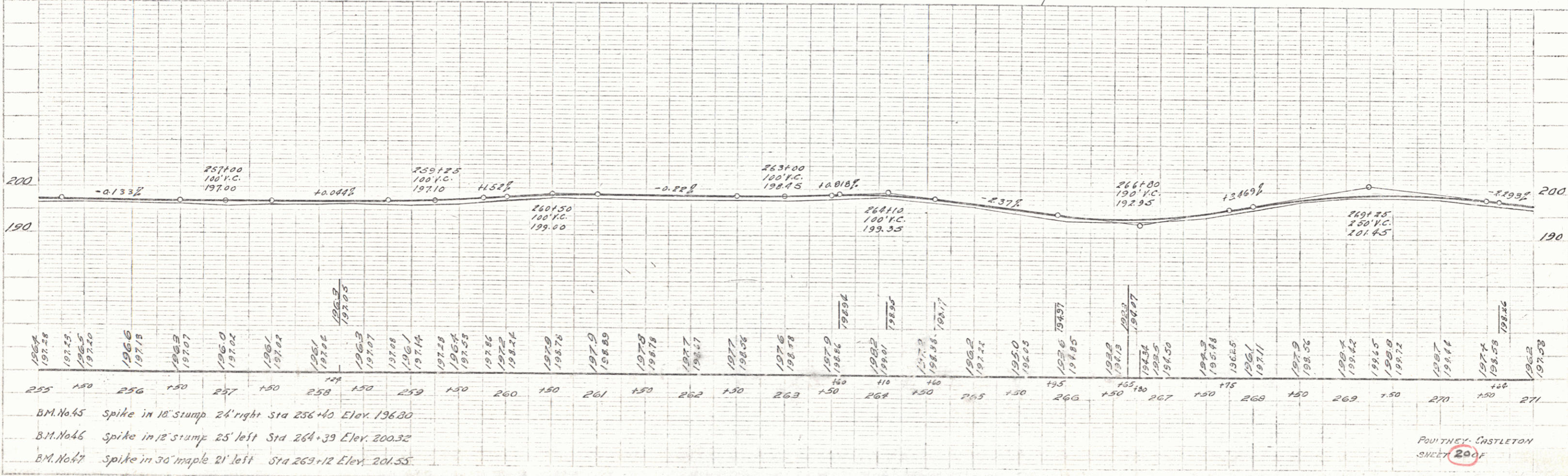
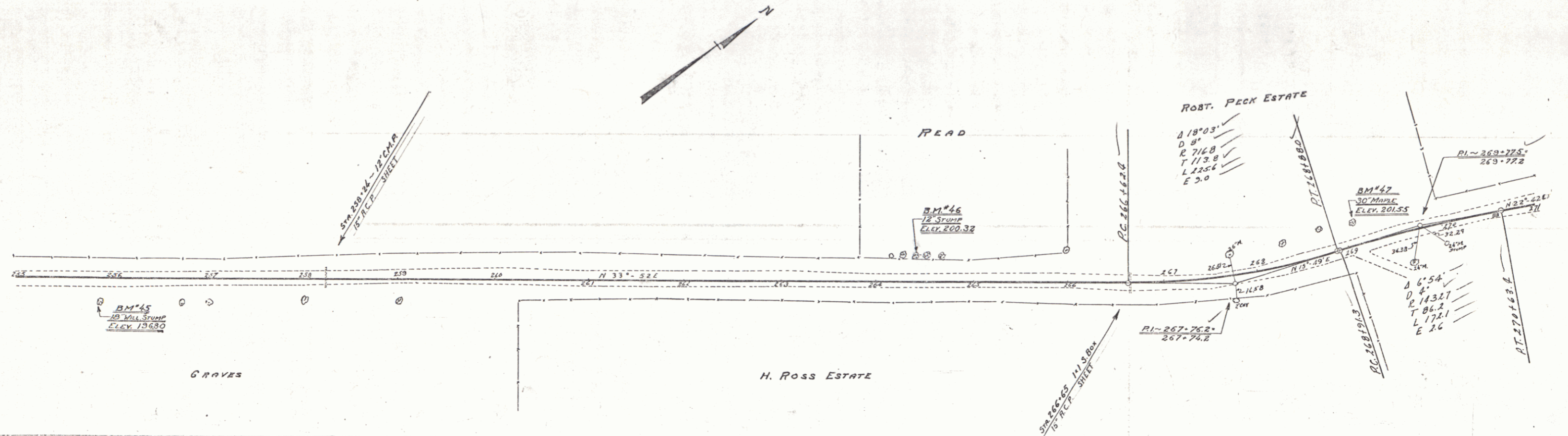
Wood Guard Rail Required

Curv Sta.	Left	Right
258+24	24'	24'
266+65	24'	24'

New Blume Cong. Pipe Culv. Required

Sta.	Dia.	Length	Conc. C	Steel
258+24	15"	36'	3 cy	33"
266+65	15"	44'	3 cy	33"

FD. ROAD DIST. NO.	STATE	FD. ROAD PROJ. NO.	YEAR	SCALE	SHEET NO.	TOTAL SHEETS
9	VT.				20	



- BM.No.45 Spike in 10' stump 24' right Sta 256+40 Elev. 196.80
- BM.No.46 Spike in 12' stump 25' left Sta 264+39 Elev. 200.32
- BM.No.47 Spike in 30' maple 21' left Sta 269+12 Elev. 201.55

POUTNEY CASTLETON SHEET 20 OF