

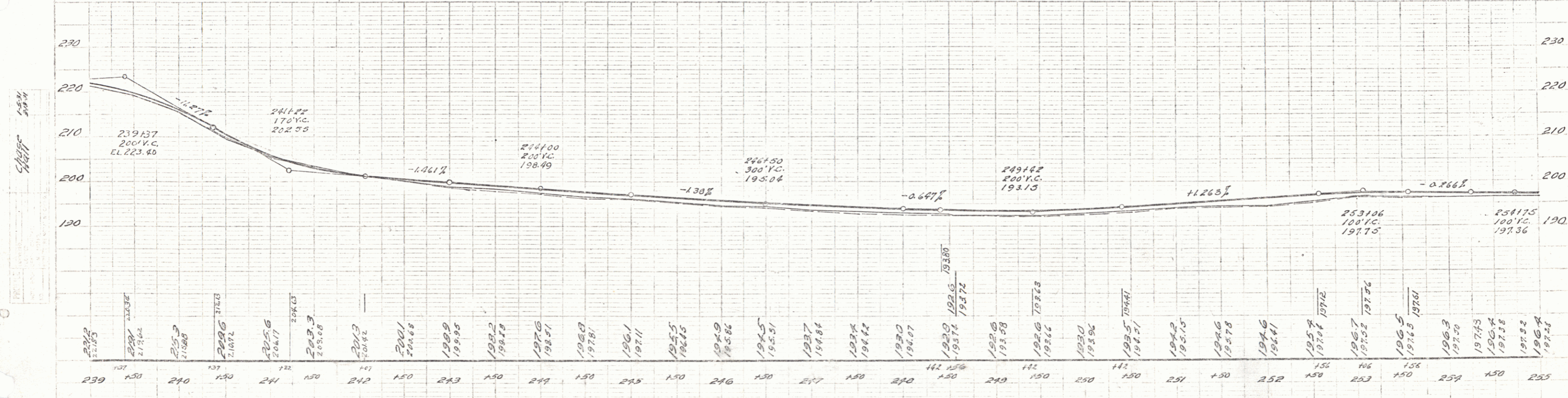
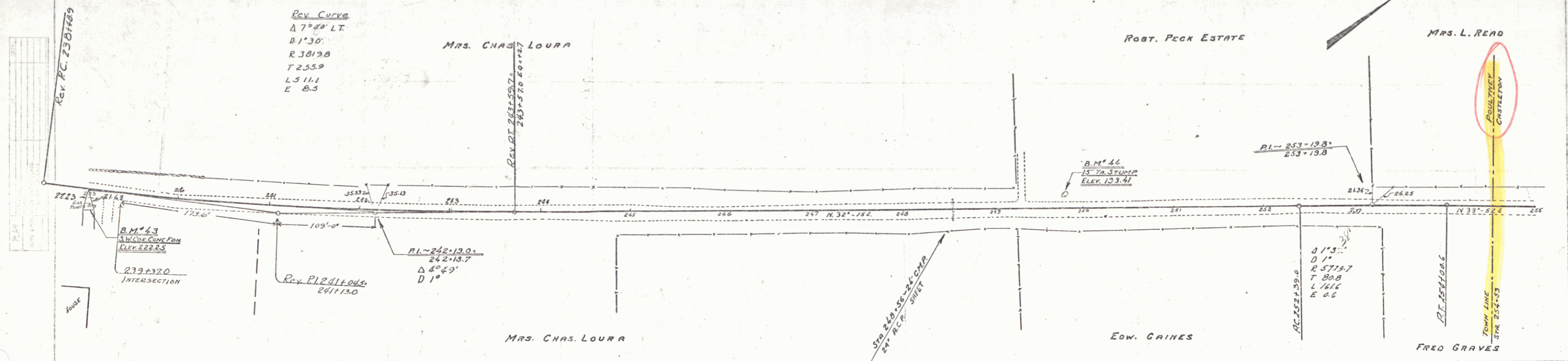
WOOD GUARD RAIL REQUIRED

Culv. Sta.	Left	Right
248+56	24'	24'

NEW REINF. CONC. PIPE CULV. REQUIRED

Sta.	Dia.	Length	Conc. A	Steel
248+56	24"	36'	24cy	51"

FED. ROAD DIST. NO.	STATE	FED. ROAD PROJ. NO.	FISCAL YEAR	SHEET NO.	TOTAL SHEETS
9	VT.				



B.M. No. 43 S.W. Cor. gas pump foundation 17' right Sta. 239+00 Elev. 222.25
 B.M. No. 44 Spike in 15" la. stump 14' left Sta. 249+80 Elev. 193.41

POULTNEY-CASTLETON SHEET 19 OF