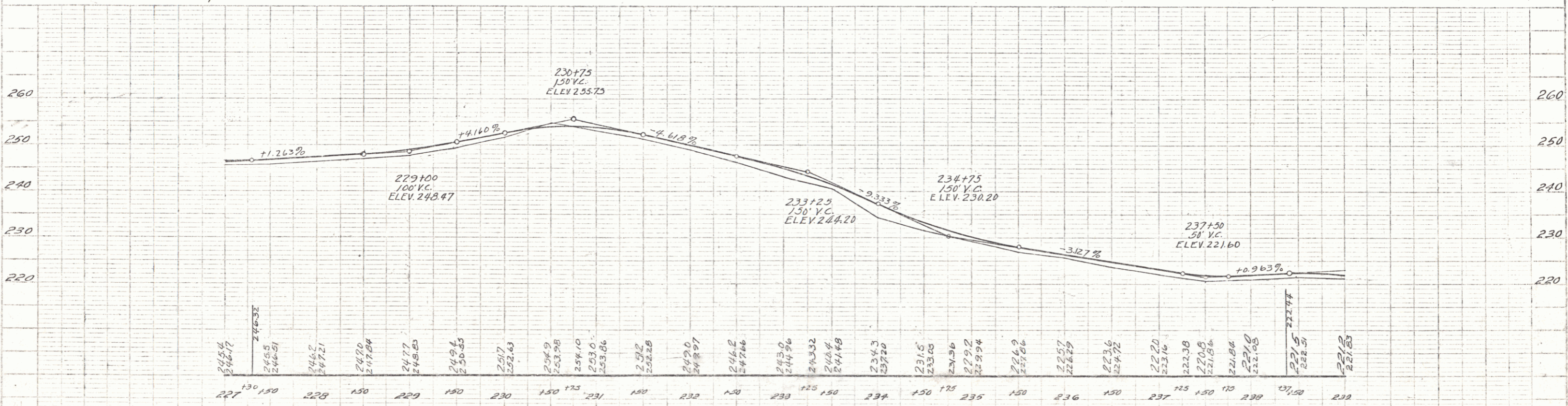
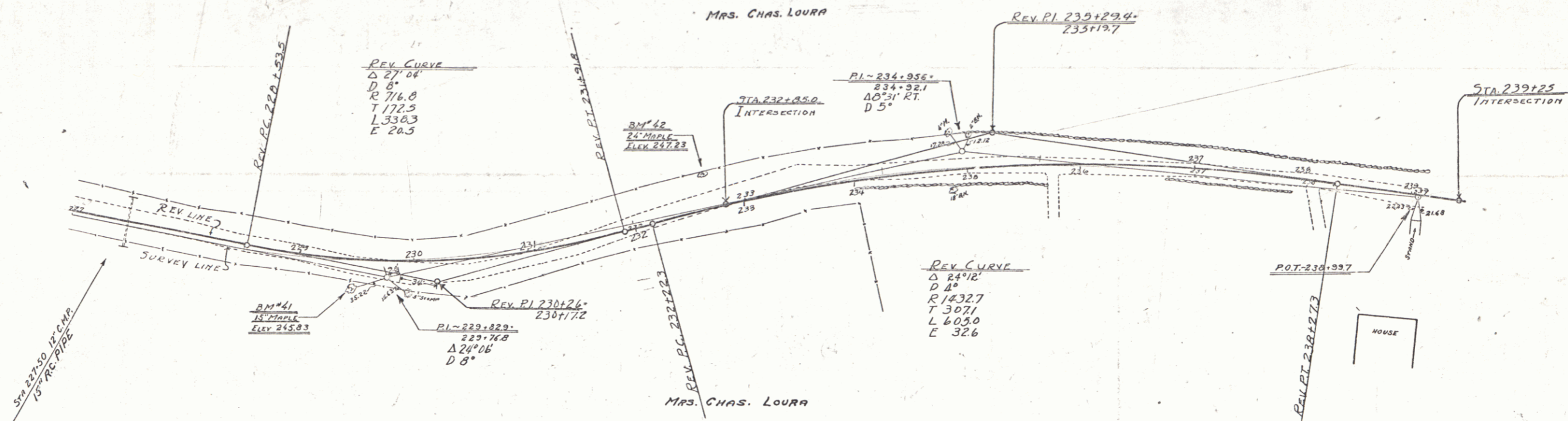


WOODGARD RAIL REQUIRED  
 CULV. STA. 227+50  
 24' 24'

REIN. CONCRETE PIPE CULVERTS REQUIRED  
 STA. DIAM. LENG. CONCA. CONC. STEEL  
 227+50 15" 36' 2.304 33"

PLAN	DATE	BY
REVISION		
NO.		

SCALE	50' = 1" VERT.
DATE	
BY	



B.M. No. 41 Spike in 15' maple 20' right sta 223+50 Elev. 245.83  
 B.M. No. 42 Spike in 24' maple 26' left sta 232+71 Elev. 247.23

POULTNEY-CASTLETON  
 SHEET 18 OF