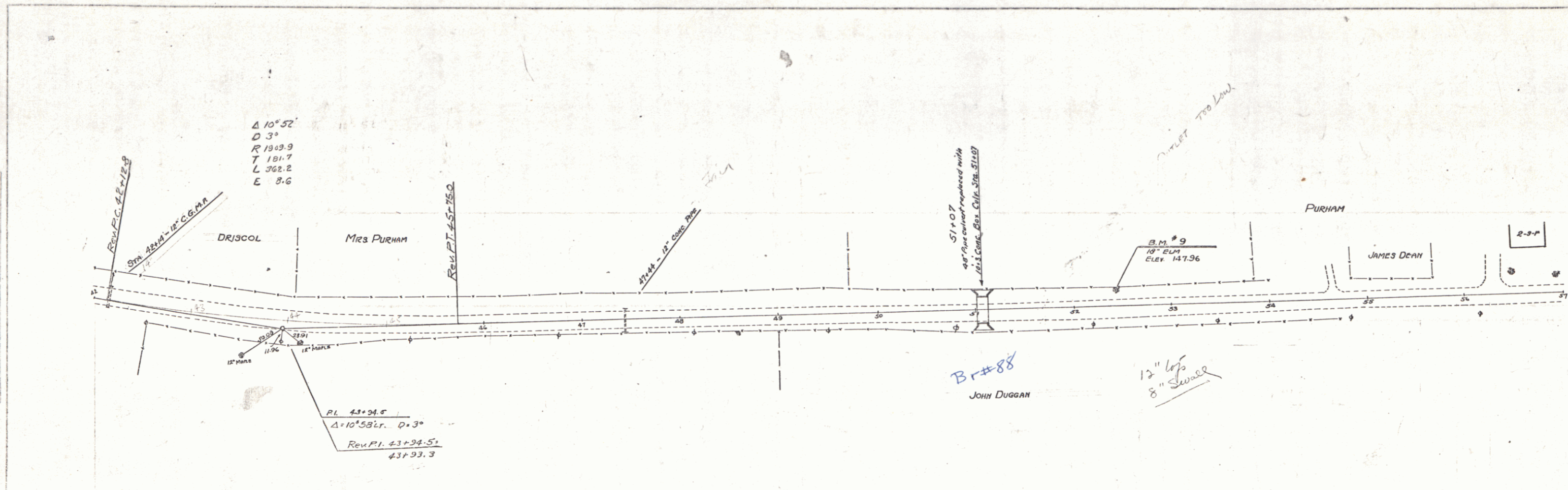
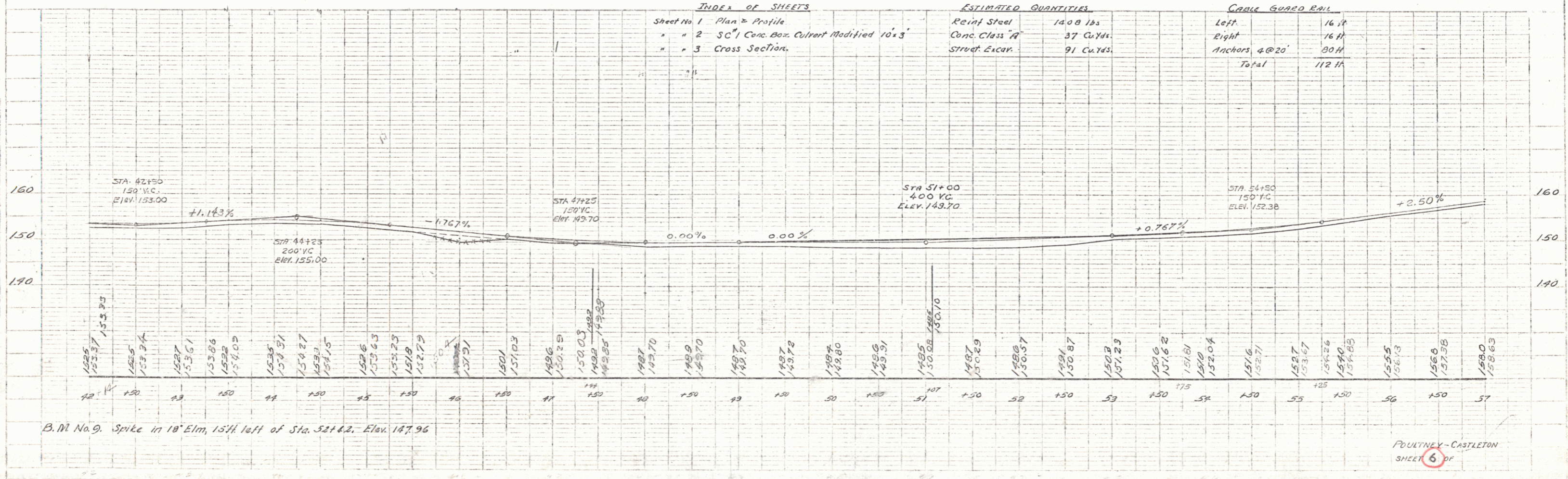


T. A. H. ...  
 CIVIL ENGINEER  
 100 ...  
 ...  
 ...



BRIDGE AT STA. 51+07

INDEX OF SHEETS		ESTIMATED QUANTITIES		CABLE GUARD RAIL	
Sheet No. 1	Plan & Profile	Rein. Steel	1408 lbs.	Left	16 ft.
" 2	SC 1 Conc. Box Culvert Modified 10' x 3'	Conc. Class "A"	37 Cu. Yds.	Right	16 ft.
" 3	Cross Section	Struct. Excav.	91 Cu. Yds.	Anchors 4 @ 20'	30 ft.
				Total	112 ft.



B.M. No. 9. Spike in 10" Elm, 15' 1/2 left of Sta. 52+4.2, Elev. 147.96

POULTNEY-CASTLETON  
SHEET 6 OF