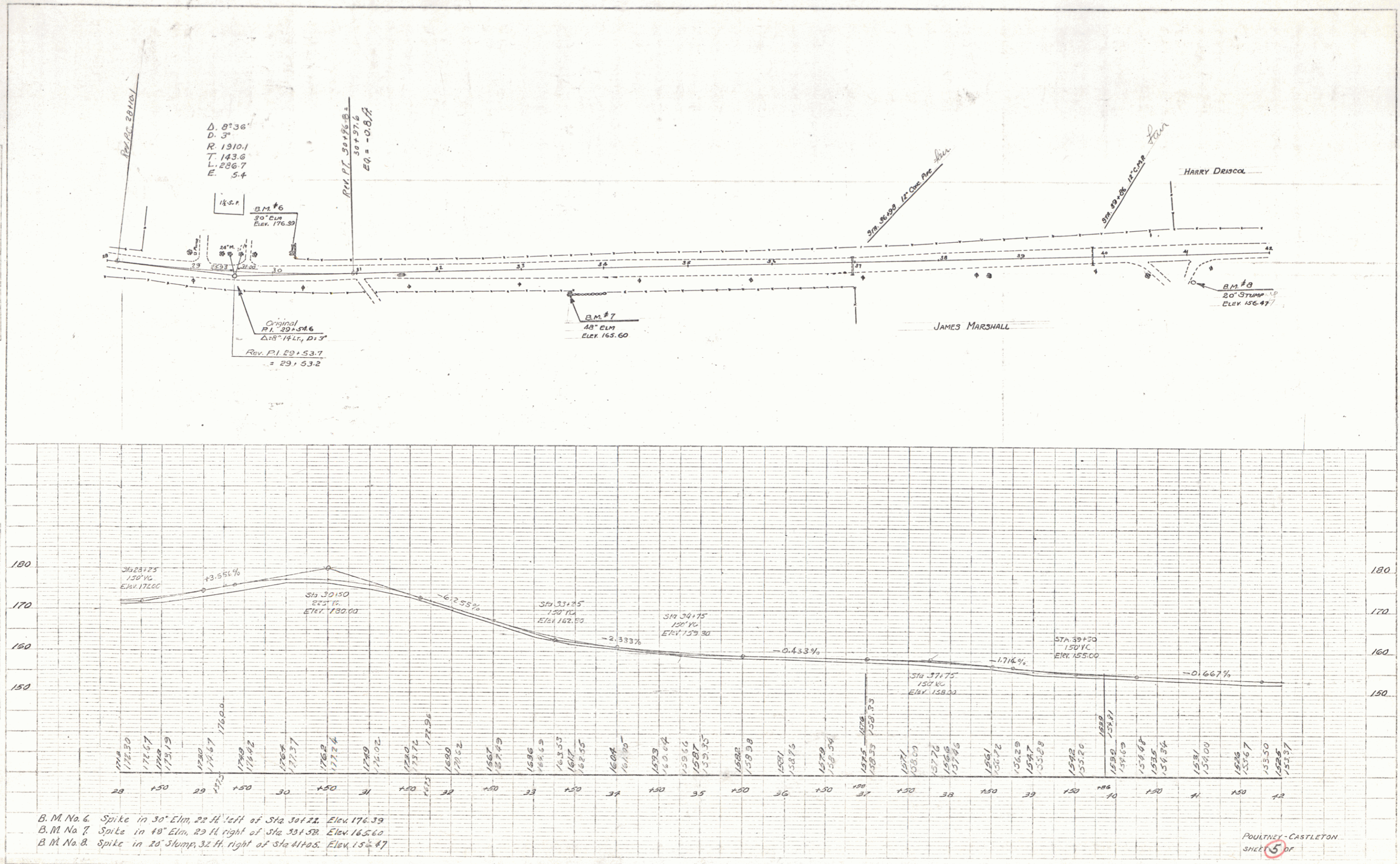


PLAN
 DRAWN BY
 CHECKED BY
 DATE
 ALL OF ANY CHECKS

PROFILE
 DRAWN BY
 CHECKED BY
 DATE



B.M. No. 6. Spike in 30" Elm, 22 ft. left of Sta 30+22. Elev. 176.39
 B.M. No. 7. Spike in 48" Elm, 29 ft. right of Sta 33+58. Elev. 165.60
 B.M. No. 8. Spike in 20" Stump, 32 ft. right of Sta 41+06. Elev. 156.47

POULNEY-CASTLETON
 SHEET 5 OF