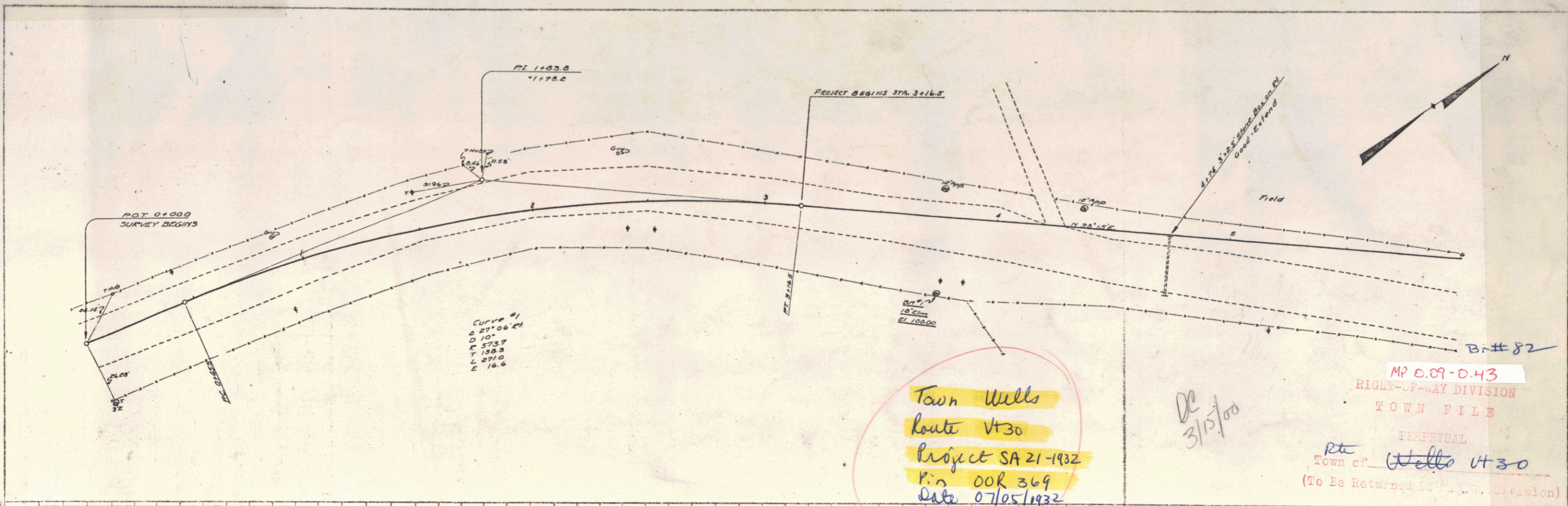


PLAN
 SHEET NO. 1
 DATE 07/15/1932
 SITE DATA
 PROJECT NO. SA 21-1932

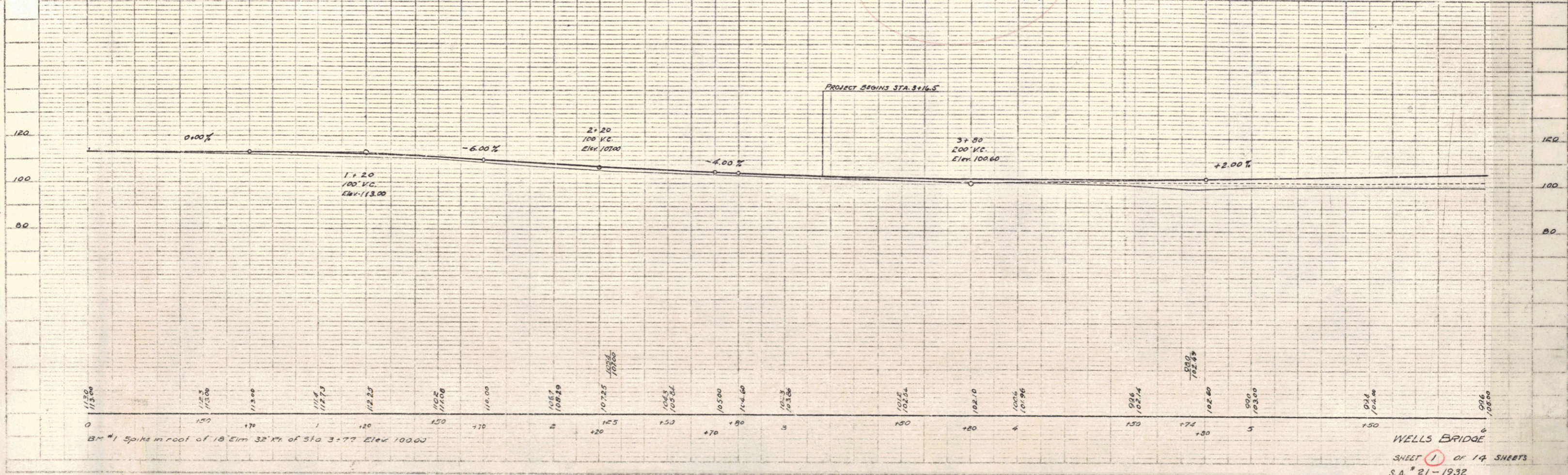
PLAN
 SHEET NO. 1
 DATE 07/15/1932
 SITE DATA
 PROJECT NO. SA 21-1932



Town Wells
 Route Vt 30
 Project SA 21-1932
 P. No. 00R 369
 Date 07/05/1932

DE
 3/15/100

MP 0.09-0.43
 RIGHT-OF-WAY DIVISION
 TOWN FILE
 PERPETUAL
 Town of Wells Vt 30
 (To Be Returned to ... Division)



BM #1 Spike in roof of 18' Elm 32' N. of Sta 3+77 Elev 102.00

WELLS BRIDGE
 SHEET 1 OF 14 SHEETS
 S.A. # 21-1932

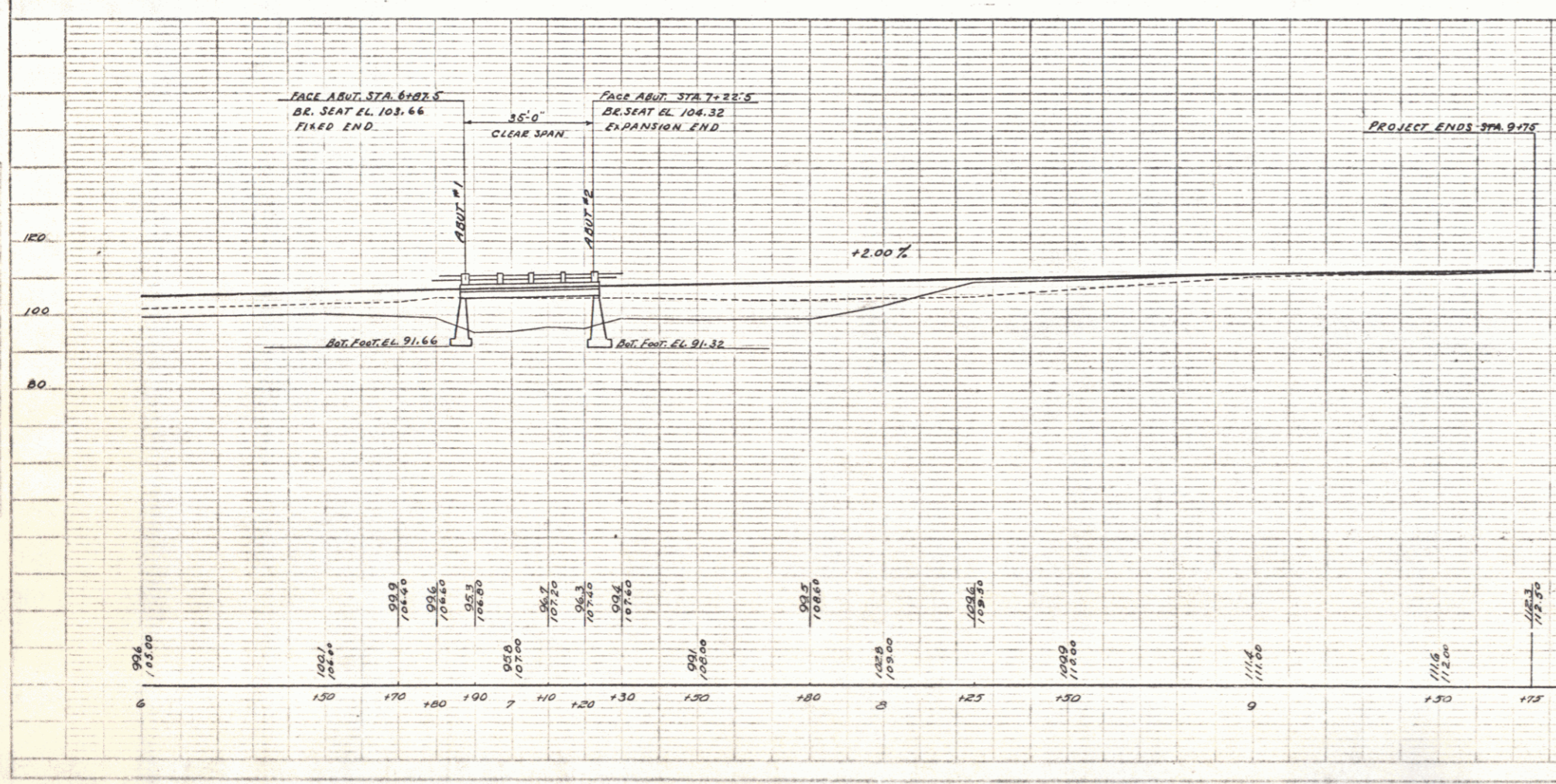
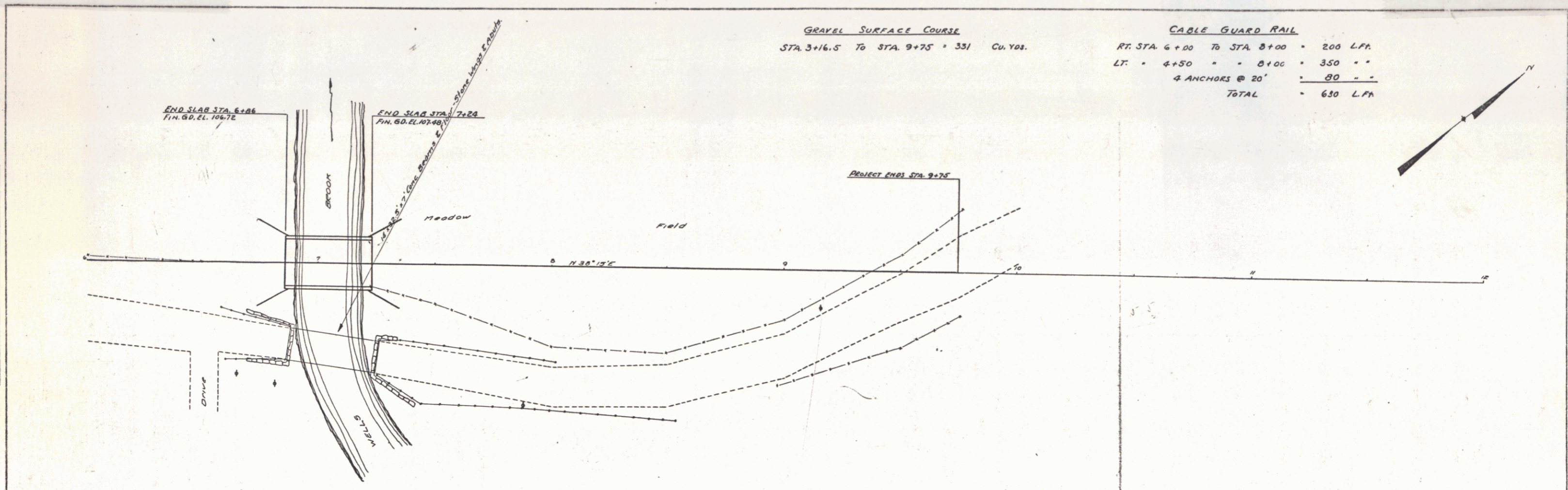
DIST. # 3 PLANS

PLAN
 DATE PLOTTED
 DATE REVISION
 BY
 CHECKED
 APPROVED

PROFILE
 DATE PLOTTED
 DATE REVISION
 BY
 CHECKED
 APPROVED

GRAVEL SURFACE COURSE
 STA. 3+16.5 TO STA. 9+75 = 331 CU. YDS.

CABLE GUARD RAIL
 RT. STA. 6+00 TO STA. 8+00 = 200 L.F.
 LT. = 4+50 " " " " = 350 " "
 4 ANCHORS @ 20' = 80 " "
 TOTAL = 630 L.F.



ESTIMATED QUANTITIES

ITEM NO. 11	COMMON EXCAVATION BORROW	1796	CY
" "	15 STRUCT. EXCAV.	176	" "
" "	20 GRAVEL SURFACE COURSE	331	" "
" "	33A CONCRETE CLASS "A"	65	" "
" "	33C " " "C"	170	" "
" "	34 REINF. STEEL	14,285	LB.
" "	67A CABLE GUARD RAIL (WOOD POST)	630	L.F.
" "	REMOVING OLD BRIDGE	1	L.S.

INDEX OF SHEETS

SHEET NO. 1, 2, 3	PLAN & PROFILE
" "	4 TYPICAL SECTION OF IMPROVEMENT (2' GRAVEL)
" "	5 STD. 20 NO. 35 C.R. (SQUARE - GRAVEL SURFACE)
" "	6 S&B'S (SQUARE) (ABUT. 1'-11" / 10') (ABUT. 2'-11" / 11')
" "	7 S&B'S TYPICAL DETAILS NOS. 3203, 3204, 3220, 3221
" "	8 S&B'S " " " " " " 3223, 3227
" "	9 S&B'S " " " " " " 3241
" "	10 S&B'S NO. 5 CABLE RAIL
" "	11 S&B'S NO. 11 LIGHTS, BARRICADES ETC.
" "	12-14 CROSS SECTIONS

CORRECT: A.D. Bishop
 BRIDGE ENGINEER

APPROVED: _____
 CHIEF ENGINEER

WELLS BRIDGE
 SHEET 2 OF 14 SHEETS
 S.A. # 21-1932

PLAN
 COUNTY
 TOWN
 DATE
 DRAWN BY
 CHECKED BY

PLAN
 COUNTY
 TOWN
 DATE
 DRAWN BY
 CHECKED BY

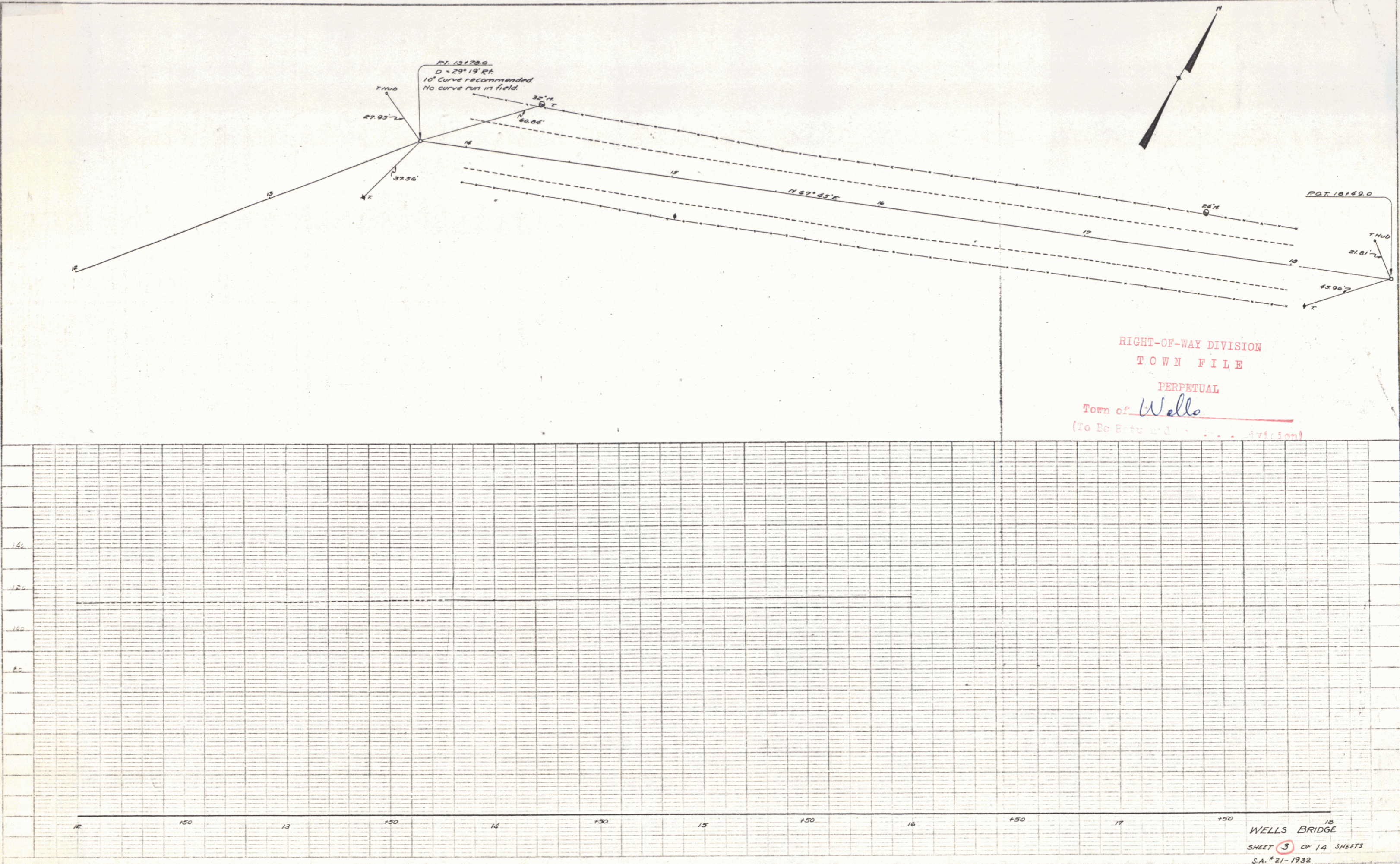


PLATE 1 - PLAN-PROFILE © P. A. & E. STUBBS

78
 WELLS BRIDGE
 SHEET 3 OF 14 SHEETS
 S.A. # 21-1932