

FED. ROAD DIST. NO.	STATE	DES. YEAR	PROJECT YEAR	SHEET NO.	TOT. SHEETS
8	VT.	1935	1935	1	2

INDEX OF SHEETS

SHEET NO. 1 TITLE PAGE

" 2 TYPICAL CROSS-SECTION OF IMPROVEMENT 2 1/2" CRUSHED STONE MIXED-IN-PLACE SURFACE COURSE

" 3 BANKING & WIDENING TABLES

4-7 PLAN & PROFILE SHEETS

8 STANDARD STRUCTURE SHEET 3-28 (Pipe Culverts)

9 " " " 3-29 (Box Culverts)

10 " " " 3-30 (Guard Rail)

11 " " " 3-31 (Boundary Markers)

12 " " " 3B-11 (Barbed Wire Signs etc.)

13-22 CROSS-SECTION SHEETS.

STANDARD SHEETS 3-28 & 3-29 APPROVED BY THE CHIEF ENGINEER ON JULY 11, 1935.

STANDARD SHEET 3-30 APPROVED BY THE CHIEF ENGINEER ON AUGUST 15, 1935.

STANDARD SHEET 3-31 APPROVED BY THE CHIEF ENGINEER ON JULY 25, 1935.

STATE OF VERMONT
STATE HIGHWAY DEPARTMENT

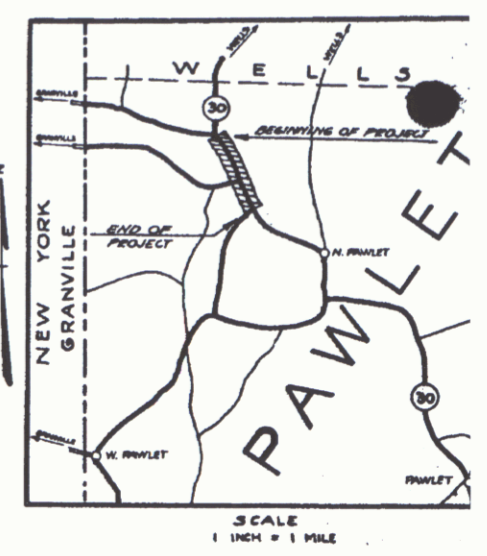
PLAN AND PROFILE OF PROPOSED
STATE HIGHWAY
NATIONAL RECOVERY SECONDARY HIGHWAY PROJECT

TOWN OF PAWLET
GRANVILLE, N.Y. - PAWLET ROAD

FROM THE END OF NRS 154 AT BLOSSOMS CORNER SOUTHERLY 0.908 MILES TO THE JUNCTION OF THE WEST PAWLET ROAD

LENGTH OF PROJECT 4796.1 FT = 0.908 MI.

Route: Vt 30
Project: NRS 154B
P.in # 00R 368
Date: 01/23/1935



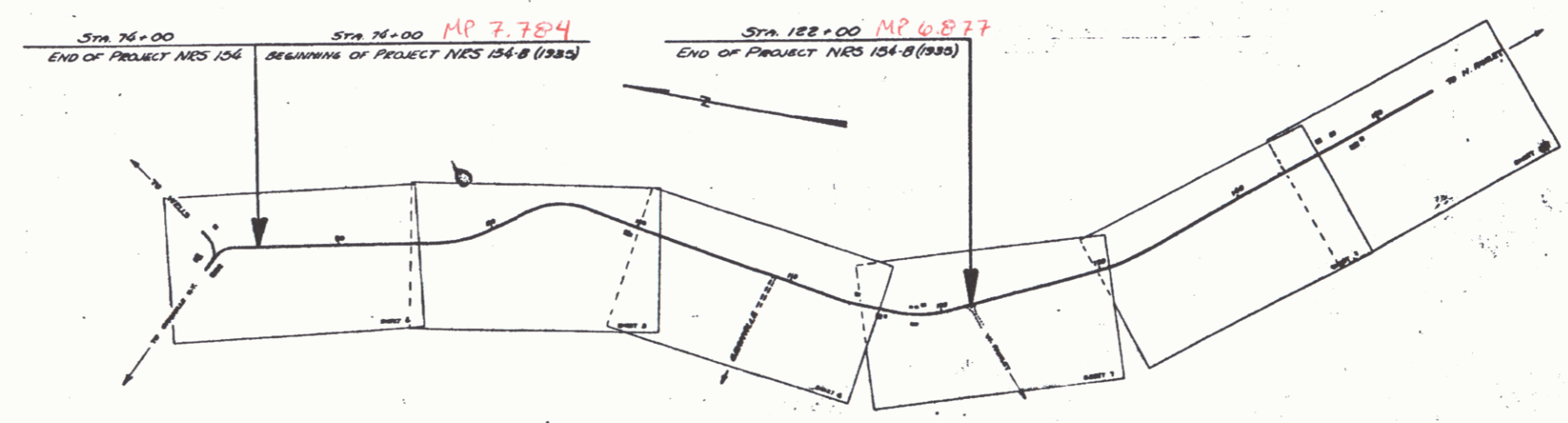
(To Be Returned To R.O.W. Division)

Town of Vt 30

PERPETUAL

TOWN FILE

RIGHT-OF-WAY DIVISION



RIGHT-OF-WAY DIVISION
TOWN FILE

PERPETUAL

Town of Vt 30

(To Be Returned To R.O.W. Division)

APPROVED January 23, 1935

R. C. [Signature]
COMMISSIONER OF HIGHWAYS

SUBMITTED BY ORDER OF THE STATE HIGHWAY ENGINEER

CONVENTIONAL SIGNS

COUNTY LINE.....	GROUND ELEVATION.....
TOWN LINE.....	GRADE ELEVATION.....
STONE WALL.....	
UNFENCED PROPERTY.....	
RAILROAD.....	
TRAVELED WAY.....	
RETAINING WALL.....	
CENTER LINE.....	
SURVEY LINE.....	
CULVERT.....	
DROP INLET.....	
TROLLEY POLE.....	
POWER POLE.....	
TELEPHONE POLE.....	
TREES.....	
HEDGES.....	

CURVE DATA

DEFLECTION ANGLE..... Δ
DEGREE OF CURVE..... D
RADIUS OF CURVE..... R
TANGENT DISTANCE..... T
LENGTH OF CURVE..... L
EXTERNAL DISTANCE..... E
POINT OF INTERSECTION..... P.I.
POINT OF CURVE..... P.C.
POINT OF TANGENT..... P.T.
POINT ON TANGENT..... P.O.T.

SCALES

TITLE	1" = 500'
PLAN	1" = 50'
PROFILE	HOR. 1" = 50'
	VERT. 1" = 10'
CROSS-SECTIONS	HOR. 1" = 5'
	VERT. 1" = 5'

These plans are subject to such revisions as may be required by the Bureau of Public Roads and the Commissioner of Highways.

Construction is to be carried on in accordance with the plans and standard road and bridge specifications of 1930 including all subsequent approved revisions, the National Rivers and Harbors Act, special provisions, and such revised specifications and special provisions as are submitted with the plans.

RECOMMENDED

DISTRICT ENGINEER BUREAU OF PUBLIC ROADS

RECOMMENDED FOR APPROVAL

CHIEF ENGINEER BUREAU OF PUBLIC ROADS

APPROVED

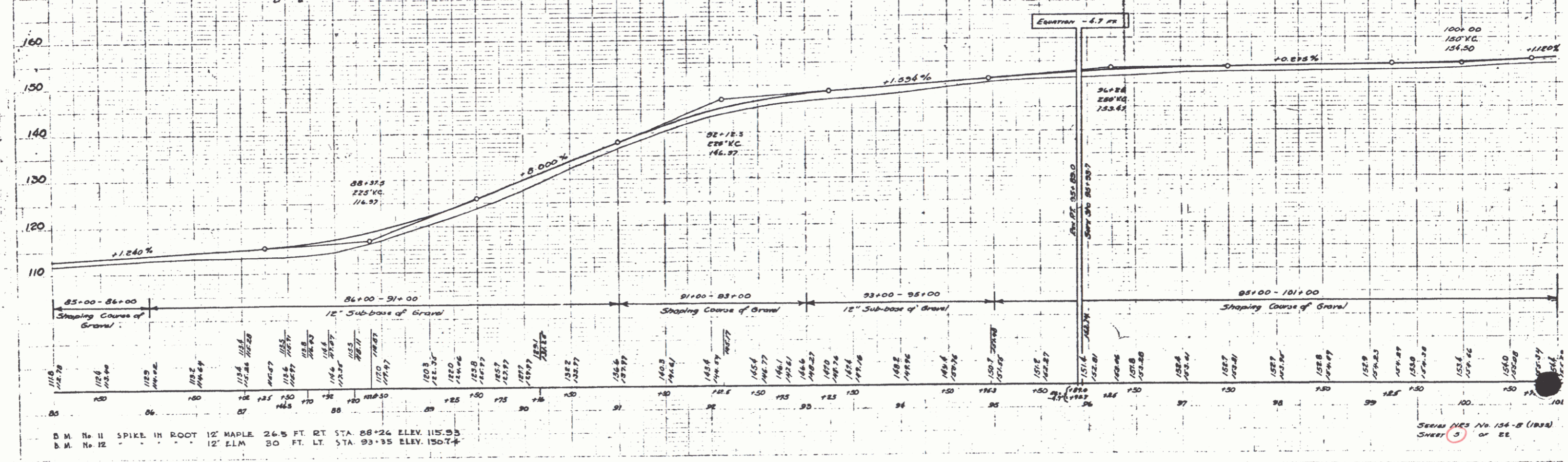
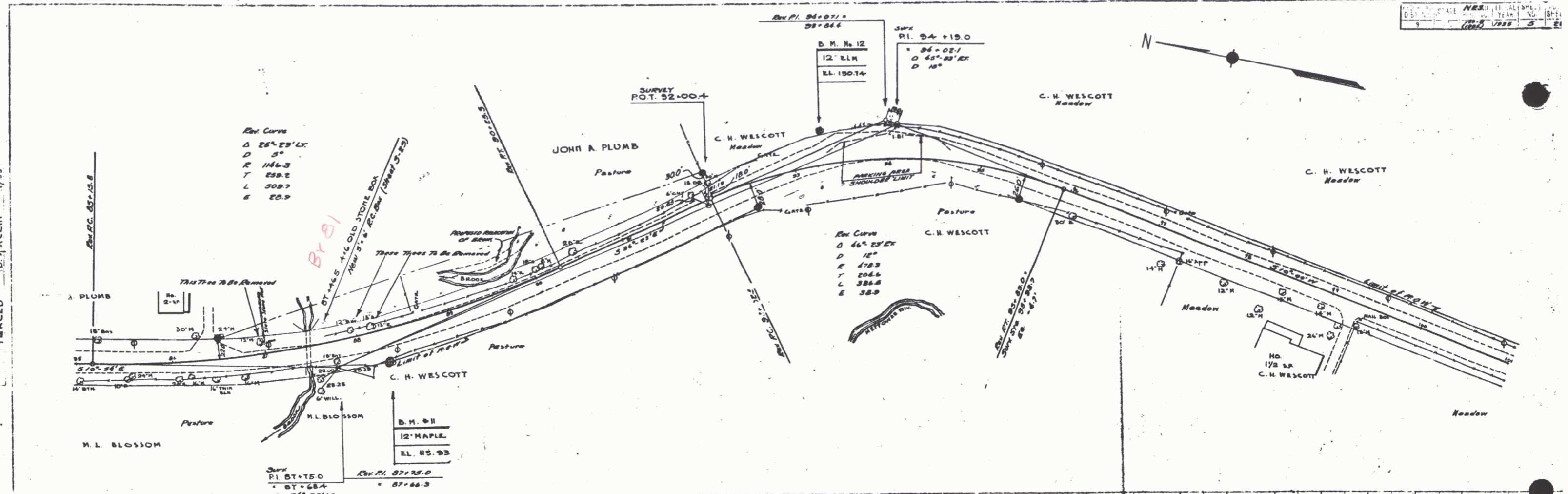
DIRECTOR - BUREAU OF PUBLIC ROADS

CONNECTICUT

SERIES NRS NO. (1935) FILE

SHEET 1 OF 22

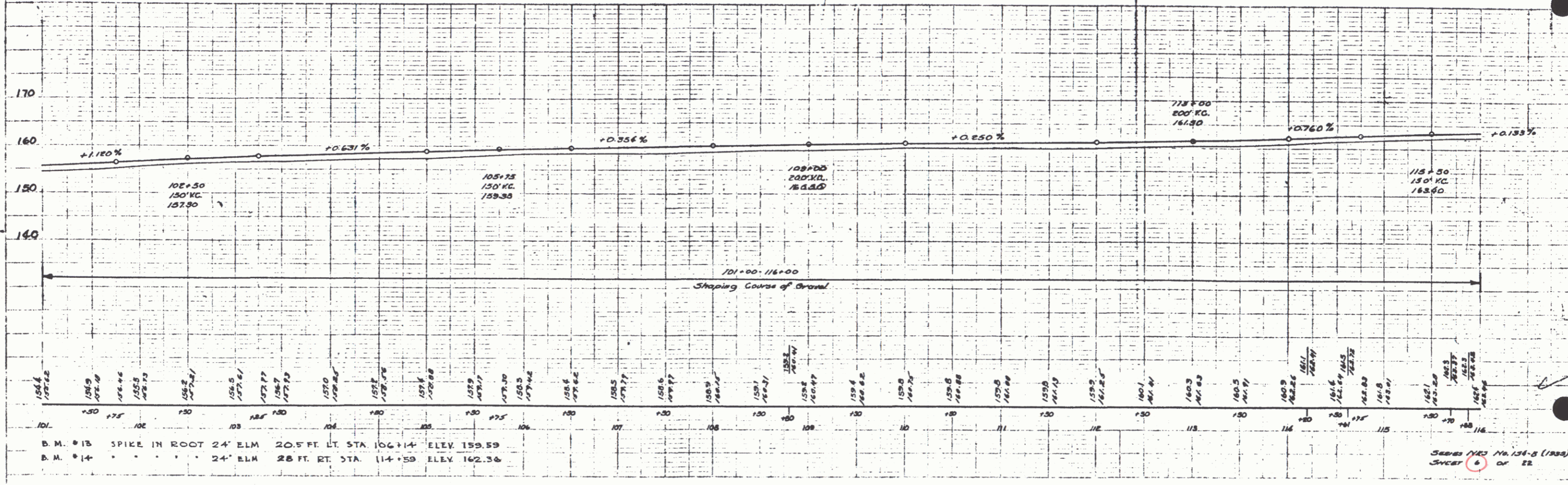
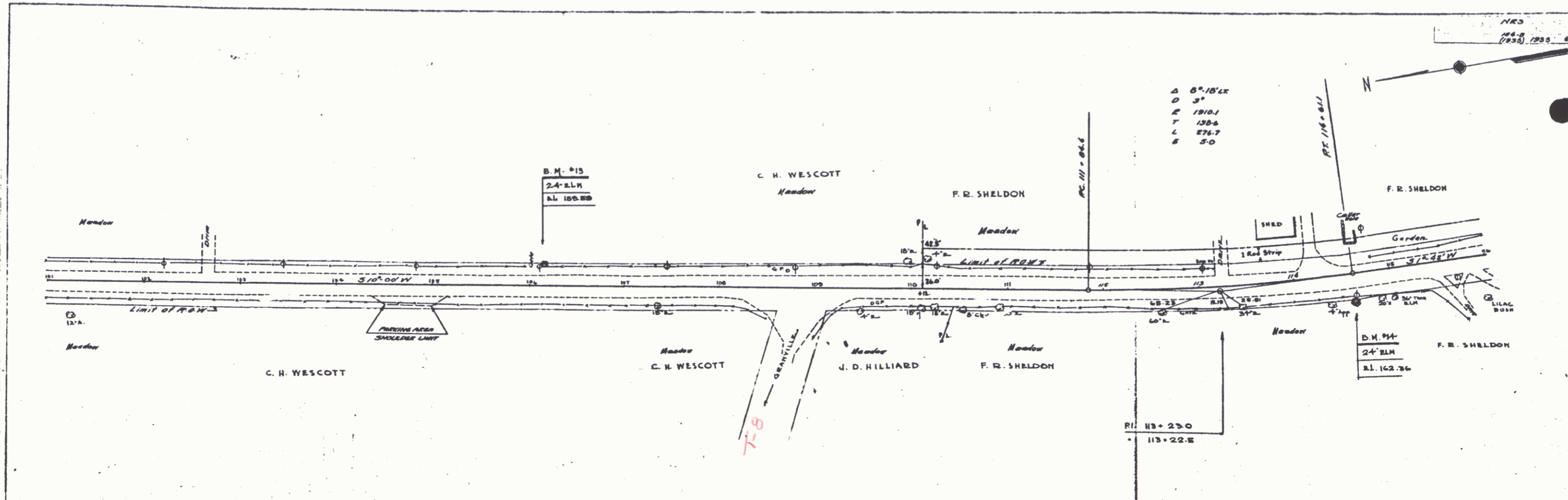
H. A. REYNOLDS 12/24
 D. H. ACCI 12/24
 T. R. C. 1/35
 D. M. ACCI



B.M. No. 11 SPIKE IN ROOT 12' MAPLE 26.5 FT. RT. STA. 86+24 ELEV. 115.93
 B.M. No. 12 12' ELM 30 FT. LT. STA. 93+35 ELEV. 150.74

Series 1125 No. 154-B (1934)
 Sheet 3 of 22

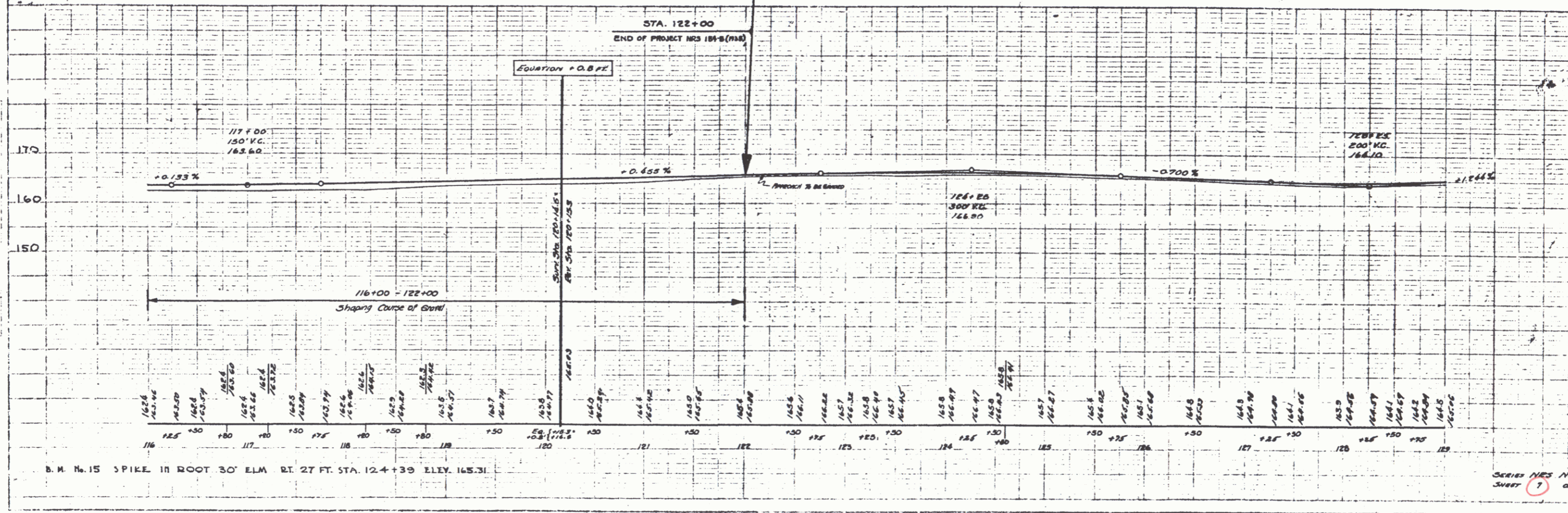
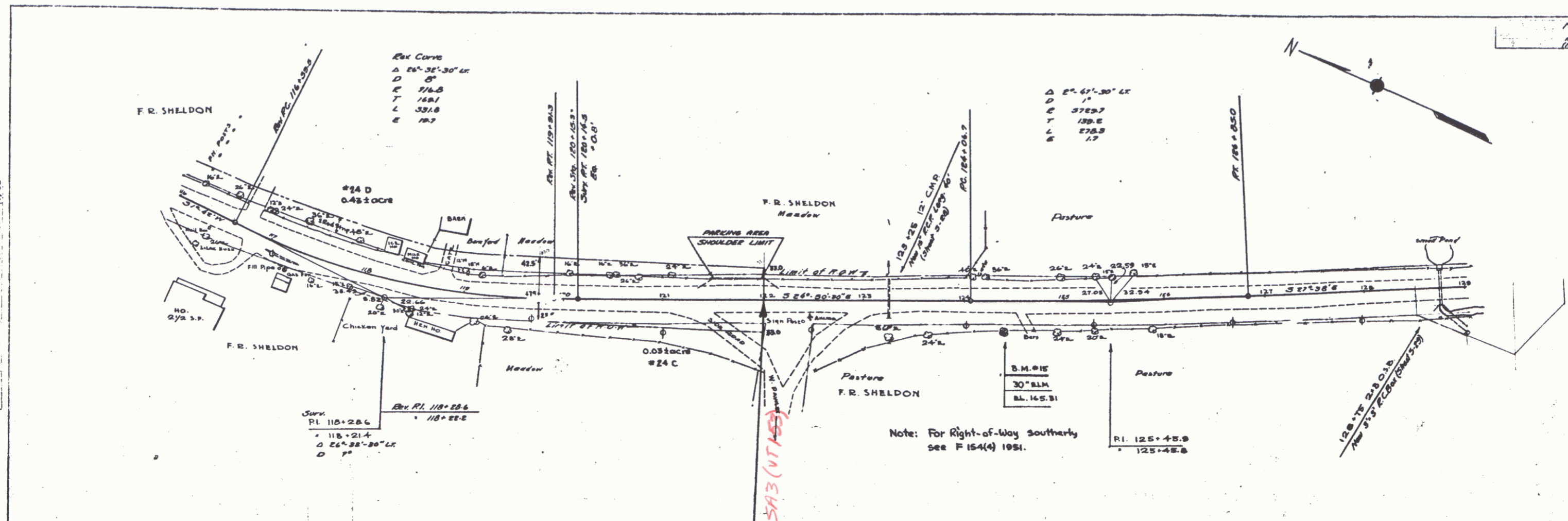
A. BECHTOLD
 D. MACCHI
 1/35



B.M. #13 SPIKE IN ROOT 24' ELM 20 FT. LT. STA. 106+14 ELEV. 159.89
 B.M. #14 24' ELM 28 FT. RT. STA. 114+50 ELEV. 162.36

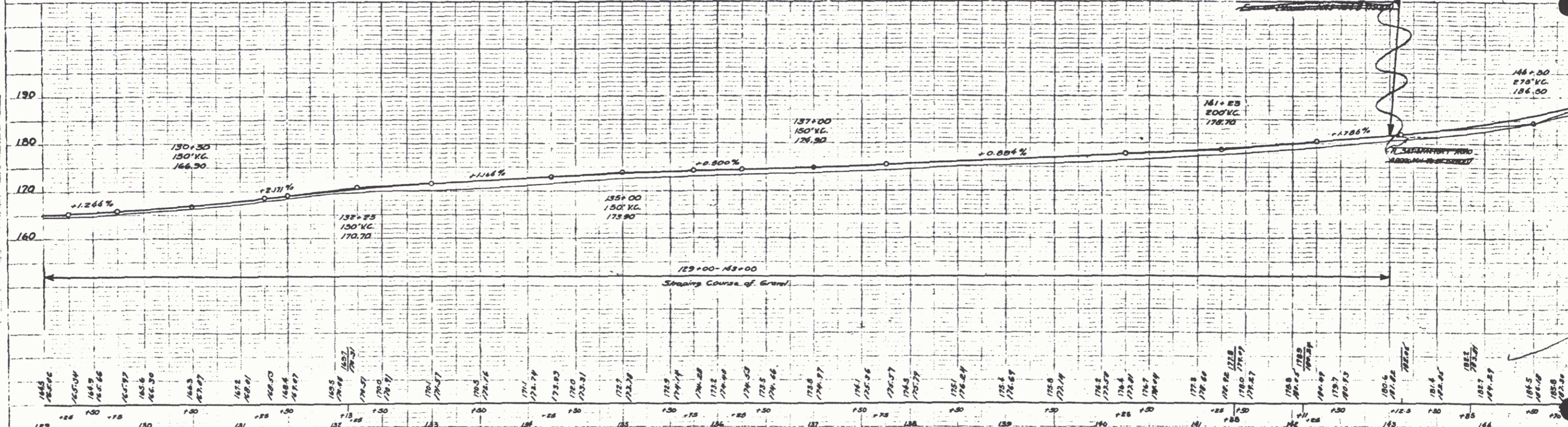
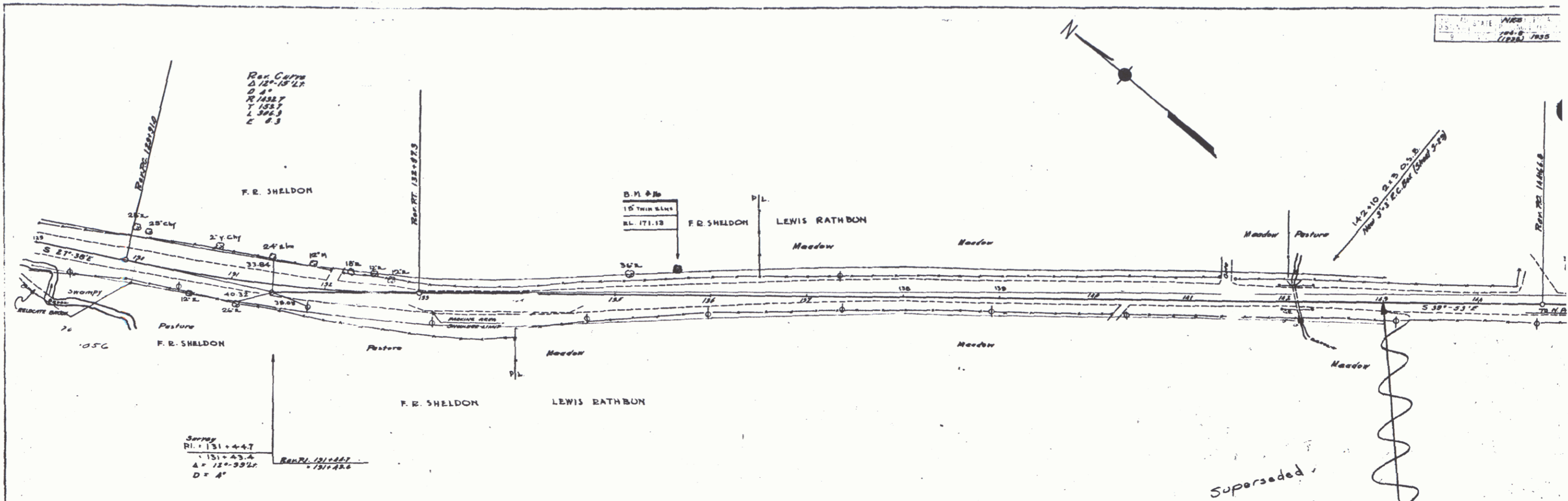
SERIES 1103 No. 134-B (1935)
 SHEET 6 OF 22

L.A. BEYBODS 12/34
D. MACCHI 1/35
TRACED



B.M. No. 15 SPIKE IN ROOT 30' ELM RT. 27 FT. STA. 124+39 ELEV. 165.31

LA REYNOLDS 1274
 D. MACCINI 1274
 D. MACCINI 1/81
 TEACED



B. M. #16 SPIKE IN ROOT 15' ELM .29 FT. LT. STA. 136+66 ELEV. 171.13

Series 1273 No. 151-B (1933) SHEET 8 of 8

REYNOLDS
D. M. GEMIN
D. MACCHI
TEAGED

LAURENCE
1/18

