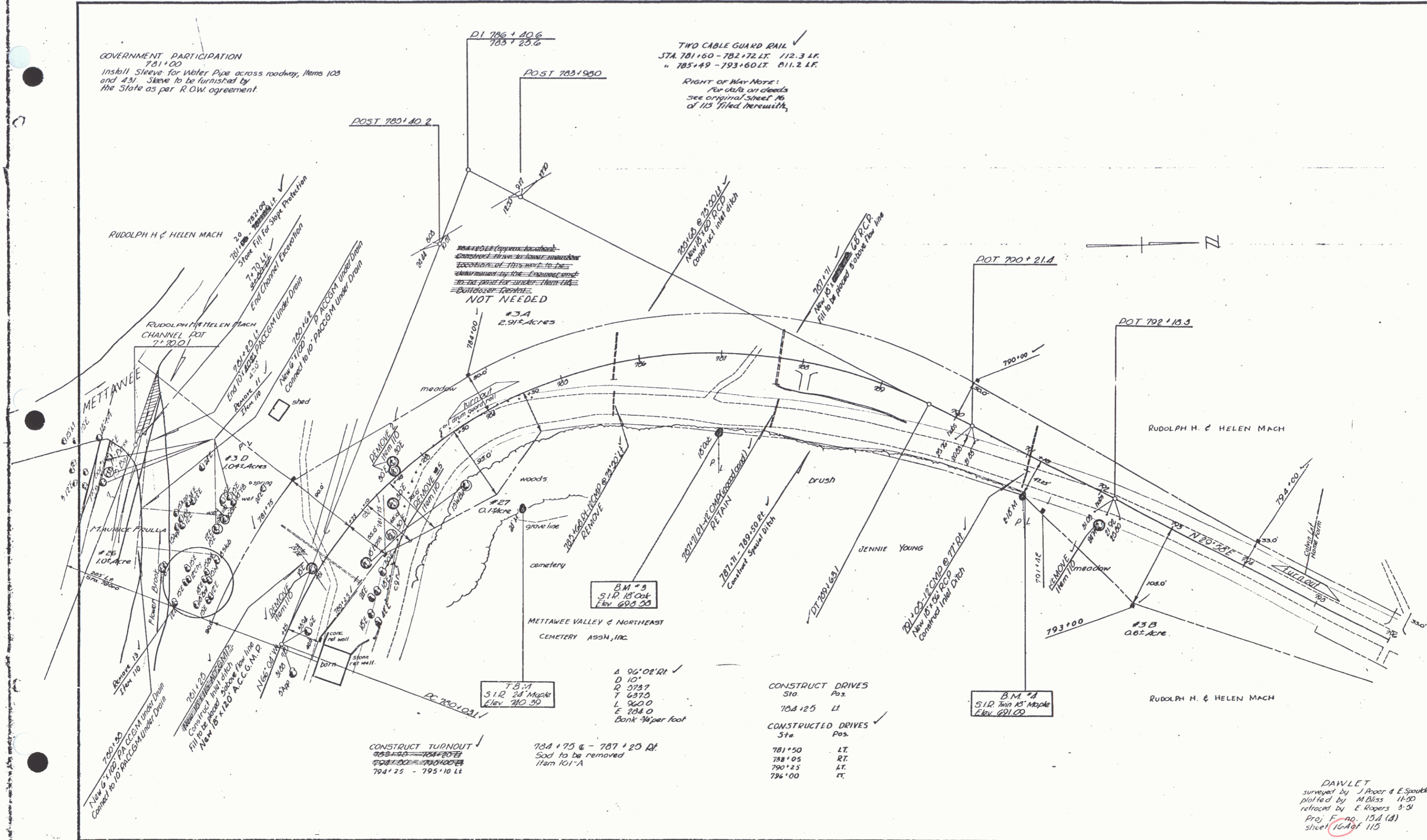


GOVERNMENT PARTICIPATION  
7.01.00  
Install Sleeve for Water Pipe across roadway, Items 103  
and 431. Sleeve to be furnished by  
the State as per R.O.W. agreement

TWO CABLE GUARD RAIL  
STA. 781+60 - 782+72 LT. 712.3 LF.  
" 785+49 - 793+60 LT. 811.2 LF.

RIGHT OF WAY NOTE:  
For data on deeds  
see original sheet 10  
of 115 filed herewith.



CONSTRUCT TURNOUT  
794+25 - 795+10 LT.

784+75 @ - 787+20 RT.  
Sod to be removed  
Item 101-A

CONSTRUCT DRIVES  
Sta Pos.  
708+25 LT.

CONSTRUCTED DRIVES  
Sta Pos.  
781+50 LT.  
788+05 RT.  
790+25 LT.  
796+00 RT.

DAWLET  
surveyed by J. Proor & E. Spoutko  
plotted by M. Bliss 11-50  
rechecked by E. Rogers 3-51  
Proj. No. 15A (d)  
sheet 16 of 115